

**BALDOR • RELIANCE**

---

# Customer information packet

## AEM2333-4

15HP, 1760RPM, 3PH, 60HZ, 284U, 0944M, TEFC, F1

Class - None

Division - Not Applicable

## Specifications

Enclosure	TEFC
Frame	284U
Frame Material	Iron
Frequency	60.00 Hz
Motor Letter Type	Three Phase
Output @ Frequency	15.000 HP @ 60 HZ
Phase	3
Synchronous Speed @ Frequency	1800 RPM @ 60 HZ
Voltage @ Frequency	460.0 V @ 60 HZ
XP Class and Group	None
XP Division	Not Applicable
Agency Approvals	UR CSA
Ambient Temperature	65 °C
Auxillary Box	No Auxillary Box
Auxillary Box Lead Termination	None
Base Indicator	Rigid
Bearing Grease Type	Polyrex EM (-20F +300F)
Blower	None
Current @ Voltage	17.600 A @ 460.0 V
Design Code	B
Drip Cover	No Drip Cover
Duty Rating	CONT
Efficiency @ 100% Load	92.4 %
Electrically Isolated Bearing	Not Electrically Isolated
Feedback Device	NO FEEDBACK
Front Face Code	Standard
Front Shaft Indicator	None
Heater Indicator	No Heater
High Voltage Full Load Amps	17.6 a
Insulation Class	F
Inverter Code	Inverter Ready

## Part detail

Revision	G
Type	AC
Mech. spec.	09F947
Base	
Status	PRD/A
Elec. spec.	09WGX997
Layout	09LYF947
Eff. date	02-25-2022
CD Diagram	CD0006
Poles	04
Leads	3#12
Proprietary	False
Created date	11-08-2016

<b>KVA Code</b>	G
<b>Lifting Lugs</b>	Standard Lifting Lugs
<b>Locked Bearing Indicator</b>	Locked Bearing
<b>Motor Lead Exit</b>	Ko Box
<b>Motor Lead Quantity/Wire Size</b>	3 @ 12 AWG
<b>Motor Lead Termination</b>	Ring Terminals
<b>Motor Standards</b>	NEMA
<b>Motor Type</b>	0944M
<b>Mounting Arrangement</b>	F1
<b>Number of Poles</b>	4
<b>Overall Length</b>	26.33 IN
<b>Power Factor</b>	85
<b>Product Family</b>	Automotive (Not For DC)
<b>Pulley End Bearing Type</b>	Ball
<b>Pulley Face Code</b>	Standard
<b>Pulley Shaft Indicator</b>	Standard
<b>Rodent Screen</b>	None
<b>Service Factor</b>	1.00
<b>Shaft Diameter</b>	1.625 IN
<b>Shaft Extension Location</b>	Pulley End
<b>Shaft Ground Indicator</b>	No Shaft Grounding
<b>Shaft Rotation</b>	Reversible
<b>Shaft Slinger Indicator</b>	Shaft Slinger
<b>Speed</b>	1760 rpm
<b>Speed Code</b>	Single Speed
<b>Starting Method</b>	Direct on line
<b>Thermal Device - Bearing</b>	None
<b>Thermal Device - Winding</b>	None
<b>Vibration Sensor Indicator</b>	No Vibration Sensor
<b>Winding Thermal 1</b>	None
<b>Winding Thermal 2</b>	None

**Nameplate**

<b>NP1404</b>									
<b>CAT.NO.</b>	AEM2333-4								
<b>SPEC.</b>	09F947Z997G1								
<b>VOLTS</b>	460								
<b>AMP</b>	17.6								
<b>RPM</b>	1760		<b>HP</b>	15					
<b>FRAME</b>	284U	<b>HZ</b>	60		<b>PH</b>	3			
<b>SER.F.</b>	1.00	<b>CODE</b>	G	<b>DES</b>	B	<b>CL</b>	F		
<b>NEMA-NOM-EFF</b>	92.4	<b>PF</b>	85						
<b>G.MIN.EFF</b>	91	<b>CC</b>	010A						
<b>RATING</b>	65C AMB-CONT								
<b>LUBRICATION</b>	POLYREX EM								
<b>DE</b>	6311	<b>ODE</b>	6208						
<b>ENCL</b>	TEFC	<b>SER. #</b>							

**Accessories**

<b>Part number</b>	<b>Description</b>	<b>Multiplier</b>
09-1310	C FACE KIT	A8

**AC Induction Motor Performance Data**

Record # 60281

Typical performance - not guaranteed values

<b>Winding:</b> 09WGZ997-R044		<b>Type:</b> 0944M		<b>Enclosure:</b> TEFC	
<b>Nameplate Data</b>			<b>460 V, 60 Hz: Single Voltage Motor</b>		
<b>Rated Output (HP)</b>	15	<b>Full Load Torque</b>	44.6 LB-FT		
<b>Volts</b>	460	<b>Start Configuration</b>	direct on line		
<b>Full Load Amps</b>	17.6	<b>Breakdown Torque</b>	163 LB-FT		
<b>R.P.M.</b>	1760	<b>Pull-up Torque</b>	53.3 LB-FT		
<b>Hz</b>	60	<b>Locked-rotor Torque</b>	73.2 LB-FT		
<b>NEMA Design Code</b>	B	<b>Starting Current</b>	108 A		
<b>Service Factor (S.F.)</b>	1	<b>No-load Current</b>	6.19 A		
<b>NEMA Nom. Eff.</b>	92.4	<b>Line-line Res. @ 25°C</b>	0.62 Ω		
<b>Rating - Duty</b>	65C	<b>Temp. Rise @ Rated Load</b>	50°C		
	AMB-CONT	<b>Locked-rotor Power Factor</b>	32.6		
		<b>Rotor inertia</b>	1.92 LB-FT <sup>2</sup>		

**Load Characteristics 460 V, 60 Hz, 15 HP**

<b>% of Rated Load</b>	<b>25</b>	<b>50</b>	<b>75</b>	<b>100</b>	<b>125</b>	<b>150</b>
<b>Power Factor</b>	52	73	84	86	87	88
<b>Efficiency</b>	89.4	92.6	93	92.5	91.4	90.3
<b>Speed</b>	1792	1783	1773	1763	1752	1739
<b>Line amperes</b>	7.44	10.3	13.5	17.6	22	26.6

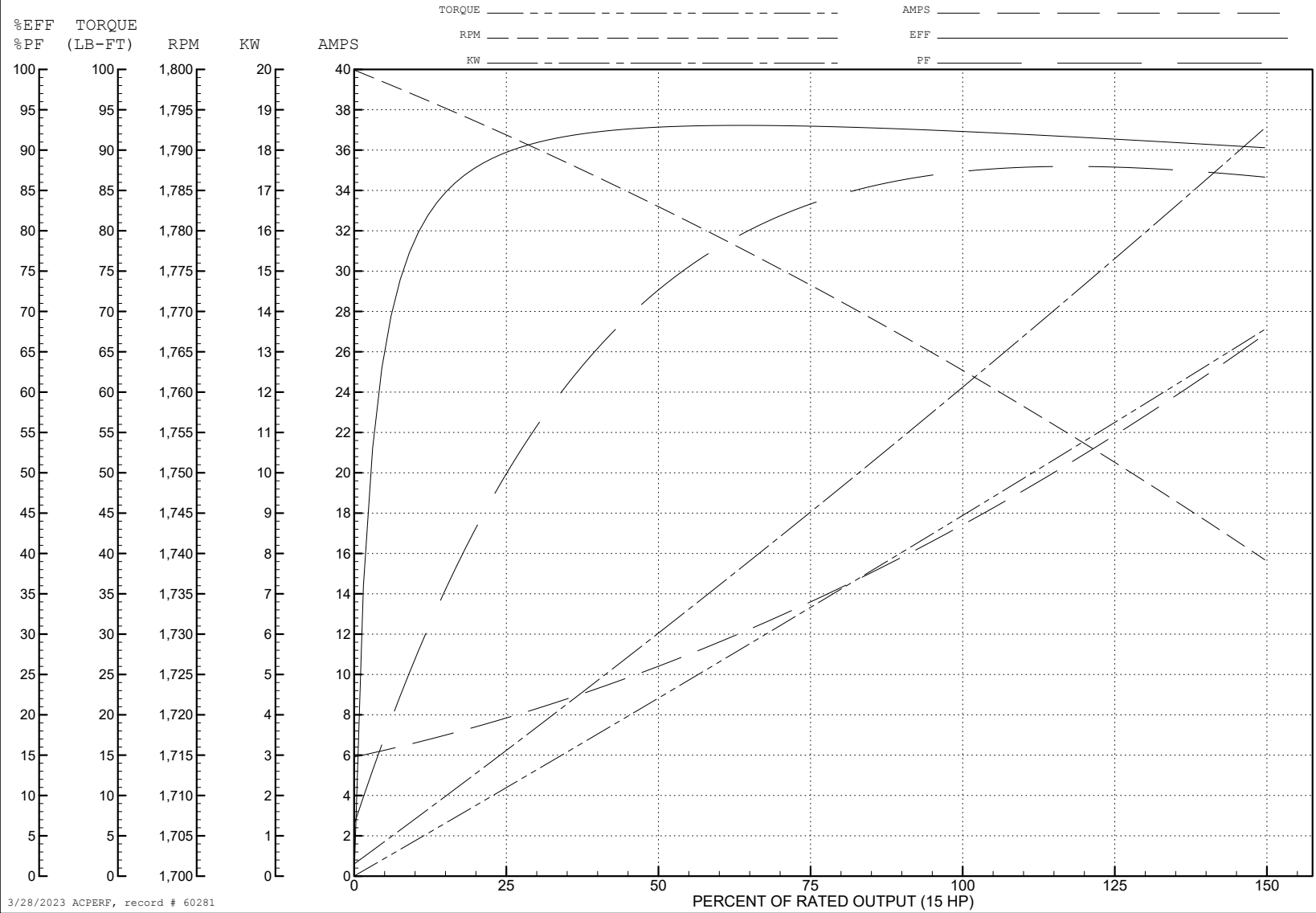
ABB Motors and Mechanical Inc.

WINDING # 09WGZ997

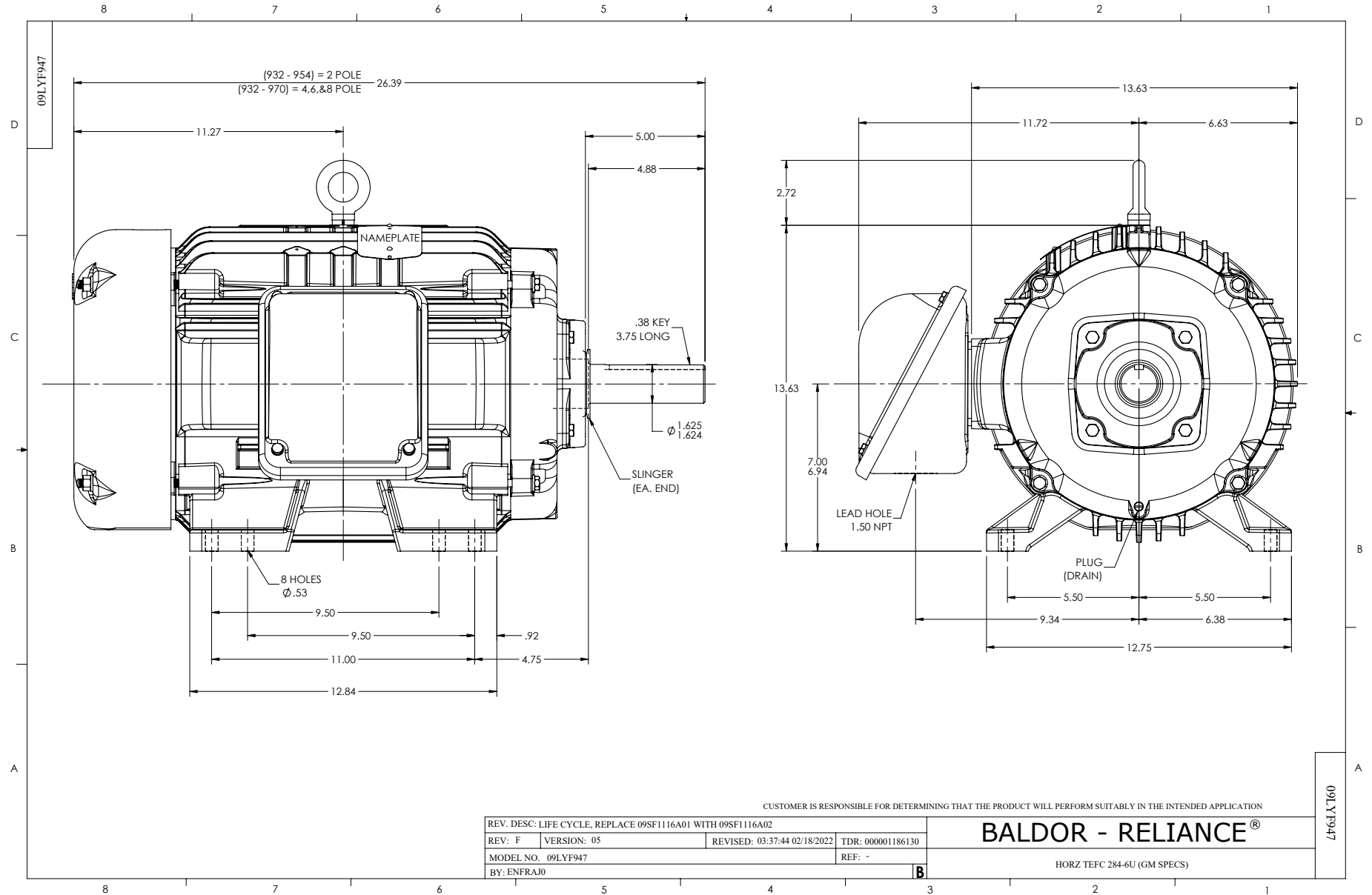
Typical performance - not guaranteed values.

15 HP 3 PH 60 HZ 1760 RPM 460 V 0944M

TORQUES (LB-FT): PO=163 PU=53.3 LR=73.2 LRA=108

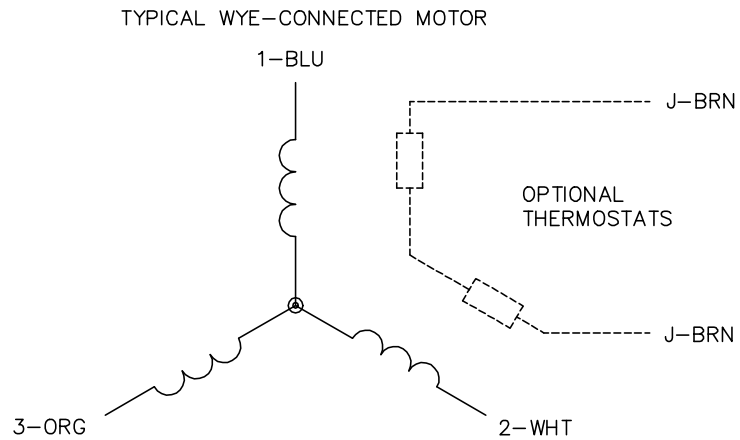


3/28/2023 ACPERF, record # 60281





CD0006



NOTES:

1. THREE LEAD MOTOR MAY BE EITHER WYE CONNECTED OR DELTA CONNECTED.
2. INTERCHANGE ANY TWO LINE LEADS TO REVERSE ROTATION.
3. OPTIONAL THERMOSTATS ARE PROVIDED WHEN SPECIFIED.
4. ACTUAL NUMBER OF INTERNAL PARALLEL CIRCUITS MAY VARY.
5. LEAD COLORS ARE OPTIONAL. LEADS MUST BE NUMBERED AS SHOWN.

CD0006

REV. DESC: ADD CLASS CONN00000007		
REV. LTR: E	VERSION: 01	TDR: 000001099922
FILE: \AAA\00005\141	REVISED: 10:24:49 02/19/2019	BY: ENBRIRO
MTL: -	© □	

**BALDOR - RELIANCE®**

3PH, SV, 3 LEADS, WYE OR DELTA CONNECTED

SH 1 of 1