

BALDOR® • RELIANCE™

Customer information packet

A7B10002253740

200HP, 3600RPM, 3PH, 60HZ, 447TS, TCVE,
Class - CLI GP-A,B,C&D CLII GP-F&G
Division - Division II

Specifications

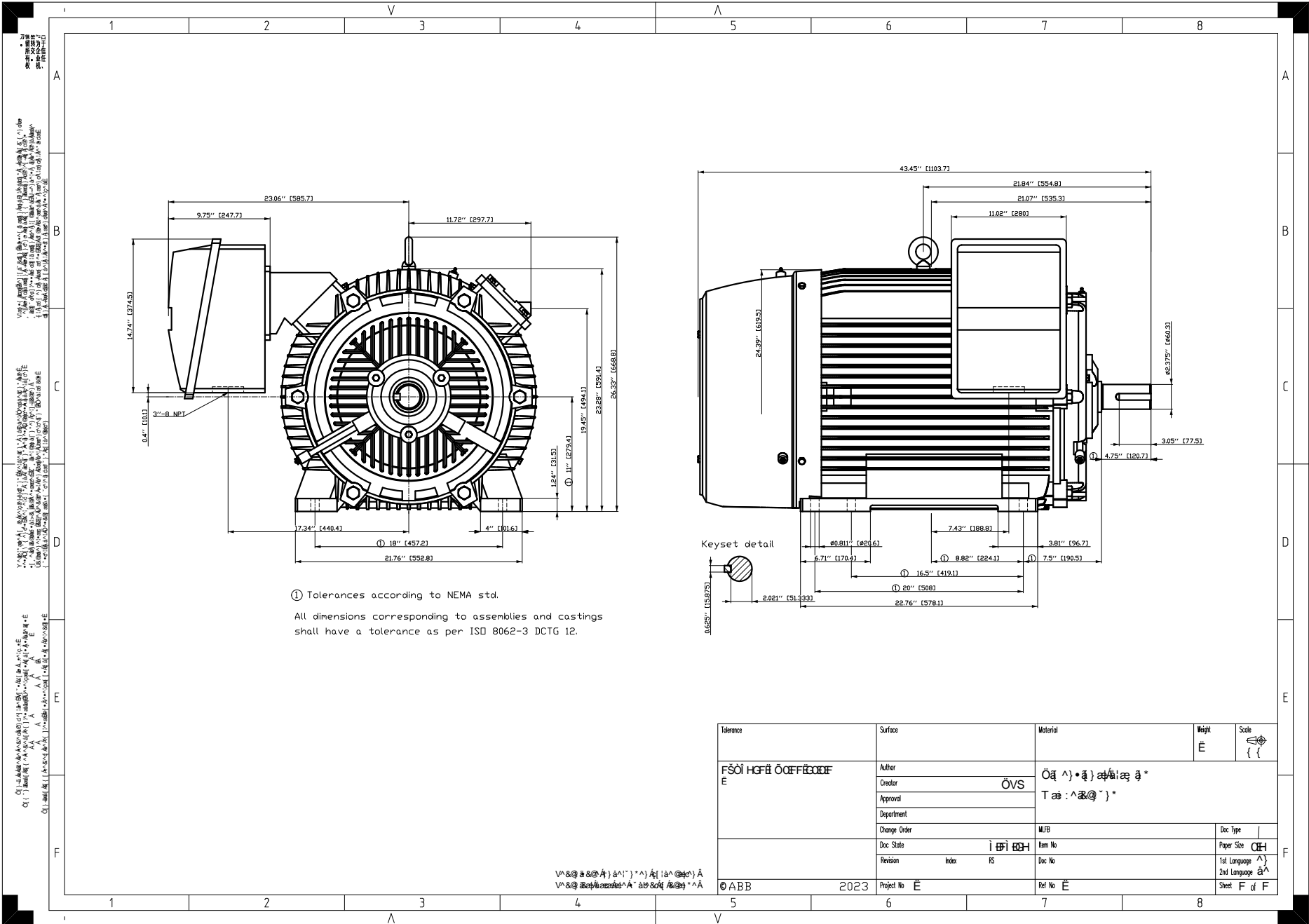
Enclosure	TCVE
Frame	447TS
Frame Material	Cast Iron
Haz Area Class and Group	CLI GP-A,B,C&D CLII GP-F&G
Haz Area Division	Division II
Phase	3
Agency Approvals	NONE
Ambient Temperature	40 °C
Auxiliary Box	NO AUXILLARY BOX
Base Indicator	Rigid
Bearing Grease Type	Polyrex EM
Blower	NO BLOWER
CE	NONE
Drip Cover	No Drip Cover
Duty Rating	CONT
Electrically Isolated Bearing	Not Electrically Isolated
Front Face Code	Standard
Heater Indicator	No Heater
Insulation Class	H
Lifting Lugs	Standard Lifting Lugs
Locked Bearing Indicator	LOCKED
MLFB	1LE63214GA112AA1-Z
Motor Lead Exit	Conduit Box
Motor Lead Termination	Flying Leads
Motor Standards	NEMA
Mounting Arrangement	F1
Number of Poles	2
Options	D05
Rodent Screen	NO RODENT SCREENS
RoHS Status	Y
Service Factor	1.15
Shaft Extension Location	DRIVE END

Part detail

Revision	A
Type	
Mech. spec.	
Base	
Status	PRD/A
Elec. spec.	
Layout	J44LY-000-113
Eff. date	01-27-2025
CD Diagram	
Poles	
Leads	
Proprietary	False
Created date	04-26-2023

Shaft Ground Indicator**PROVISIONS FOR SHAFT GROUND**

Shaft Rotation	Reversible
Speed Code	Single Speed
Starting Method	Direct on line
Thermal Device - Winding	NO WINDING THERMAL
Vibration Sensor Indicator	No Vibration Sensor
Winding Thermal 1	NOT APPLICABLE
Winding Thermal 1 Location	00
Winding Thermal 2	NOT APPLICABLE
Winding Thermal 2 Location	00



Tolerance	Surface	Material	Weight	Scale
F50I HGFÈ ÖÖFFÈÖÖE	Author	ÖV	Öä ^) ä) ä) ä) ä) *	{ {
E	Creator	ÖVS	T ä : ^ ä @ *) *	
	Approval			
	Department			
	Change Order	MFB	Doc Type	
	Doc State	i E) B-H	Item No	Paper Size ÖEH
	Revision	Index RS	Doc No	1st Language ^)
© ABB	2023	Project No È	Ref No È	2nd Language ä ^
				Sheet F of F