

ABB BALDOR RELIANCE III

Customer information packet 8125W

.75HP, 3000/3600RPM, 3PH, 50/60HZ, 3524M

Specifications

Enclosure	TENV
Frame Material	Steel
Frequency	50.00 Hz 60.00 Hz 50.00 Hz 60.00 Hz
Motor Letter Type	Three Phase
Nameplate Output	.75
Number of Poles	2 2
Output @ Frequency	.750 HP @ 60 HZ .750 HP @ 50 HZ
Phase	3 3
Product Style	GRINDER
Speed	3000 rpm 3600 rpm 3000 rpm 3600 rpm
Synchronous Speed @ Frequency	3000 RPM @ 50 HZ
Voltage	575 V
Voltage @ Frequency	575.0 V @ 60 HZ 575.0 V @ 50 HZ
Agency Approvals	UR
Ambient Temperature	40 °C
Base Indicator	Rigid
Bearing Grease Type	Polyrex EM (-20F +300F)
Current @ Voltage	.560 A @ 575.0 V
Duty Rating	CONT
Feedback Device	NO FEEDBACK
Insulation Class	B
KVA Code	-

Part Detail

Revision	AU
Type	AC
Mech. spec.	G8-166
Base	
Status	PRD/A
Elec. spec.	G8WG0030
Layout	G8LY0166
Eff. date	12-15-2021
CD Diagram	CD0006
Poles	02
Leads	3#18 12" LG Y
Proprietary	False
Created date	08-08-2007

Motor Lead Quantity/Wire Size	3 @ 18 AWG
Motor Standards	Other
Motor Type	3524M
Mounting Arrangement	F1
Overall Length	23.24 IN
Product Family	Grinder
Service Factor	1.00
Shaft Extension Location	Double Shaft
Shaft Rotation	Phase Seq-Opp Std Rot (CWODE)
Shaft Slinger Indicator	No Slinger
Speed Code	Single Speed
Starting Method	Direct on line
Thermal Device - Winding	None
Winding Thermal 1	None
Winding Thermal 2	None

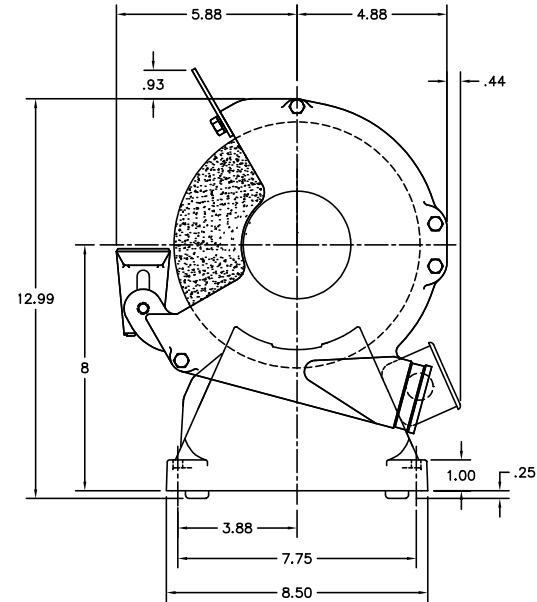
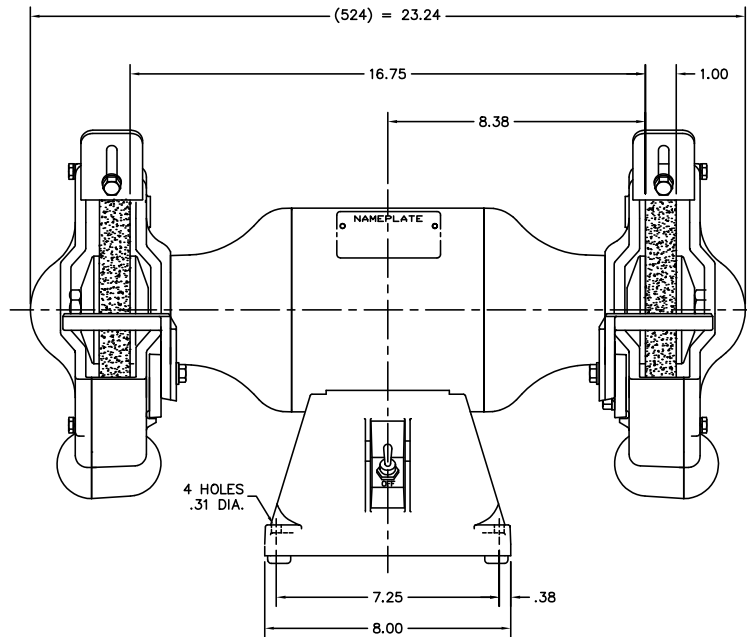
Nameplate

NP3118			
CAT.NO.	8125W		
HP	.75	VOLTS	575
PHASE	3	AMPS	.56
HZ	50//60	RPM	3000//3600
SER.NO			
SPEC.	G8-166-30		

Accessories

Part number	Description	Multiplier
GA16	PEDESTAL INDUSTRIAL, CAST IRON 6" - 10"	A8
GA14	PEDESTAL FABRICATED STEEL W/SHELVES	A8
GA20	PEDESTAL INDUSTRIAL, CAST IRON 8"-14"	A8
GA20E	PEDESTAL LIGHT INDUSTRIAL,STEEL	A8
GA24	WATER POT	A8
B80	8" 36 GRIT GRINDING WHEEL	A8
B81	8" 60 GRIT GRINDING WHEEL	A8
GA9	PAIR LIGHTED EYESHIELDS	A8
GA9-1	SINGLE LIGHTED EYESHIELD	A8
GA9S	PAIR EYESHIELDS W/ ON-OFF SWITCH	A8
GA11	PAIR EYESHIELDS	A8
DC8	DUST CONTROL UNIT	A8

GBLY0166



CUSTOMER IS RESPONSIBLE FOR DETERMINING THAT MOTOR PERFORMANCE IS SUITABLE IN THE APPLICATION.

REV. DESC:	OMITTED FELT WSHR HA1025A03 & CHG'D TO SEALED BRGS		
REV. LTR:	H	BY: SSS	REVISED: 09/29/00 12:54
FILE:	AAA00064345		TDR: 0212666
MTL:	-		REF: -

BALDOR ELECTRIC Co.

8" GRINDER TENV MODEL 524M

GBLY0166

CD0006



NOTES:

1. THREE LEAD MOTOR MAY BE EITHER WYE CONNECTED OR DELTA CONNECTED.
2. INTERCHANGE ANY TWO LINE LEADS TO REVERSE ROTATION.
3. OPTIONAL THERMOSTATS ARE PROVIDED WHEN SPECIFIED.
4. ACTUAL NUMBER OF INTERNAL PARALLEL CIRCUITS MAY VARY.
5. LEAD COLORS ARE OPTIONAL. LEADS MUST BE NUMBERED AS SHOWN.

CD0006

REV. DESC: ADD CLASS CONN00000007		
REV. LTR: E	VERSION: 01	TDR: 000001099922
FILE: \AAA\00005\141	REVISED: 10:24:49 02/19/2019	BY: ENBRIRO
MTL: -	© □	

BALDOR - RELIANCE®

3PH, SV, 3 LEADS, WYE OR DELTA CONNECTED

SH 1 of 1