

ABB BALDOR RELIANCE III



Customer information packet

8102WD

24M 4P GRNDR

Specifications

Enclosure	TENV
Frame Material	Steel
Frequency	50.00 Hz 60.00 Hz 50.00 Hz 60.00 Hz
Motor Letter Type	Three Phase
Nameplate Output	.75
Number of Poles	4 4
Output @ Frequency	.750 HP @ 60 HZ .750 HP @ 50 HZ
Phase	3 3
Shaft Diameter	0.750 IN 0.750 IN
Speed	1500 rpm 1800 rpm 1500 rpm 1800 rpm
Synchronous Speed @ Frequency	1800 RPM @ 60 HZ
Voltage	208 V 230 V 460 V
Voltage @ Frequency	208.0 V @ 50 HZ 208.0 V @ 60 HZ 460.0 V @ 60 HZ 460.0 V @ 50 HZ 230.0 V @ 60 HZ 230.0 V @ 50 HZ
Agency Approvals	CSA
Ambient Temperature	40 °C
Base Indicator	Rigid

Part Detail

Revision	-
Type	AC
Mech. spec.	G8-236
Base	
Status	PRD/A
Elec. spec.	G8WG0377
Layout	G8LY0236
Eff. date	10-31-2024
CD Diagram	CD0005
Poles	04
Leads	9#18
Proprietary	False
Created date	10-25-2024

Bearing Grease Type	Polyrex EM (-20F +300F)
Current @ Voltage	3.000 A @ 230.0 V 3.000 A @ 208.0 V 1.500 A @ 460.0 V
Design Code	-
Duty Rating	CONT
Feedback Device	NO FEEDBACK
Insulation Class	B
KVA Code	-
Motor Lead Quantity/Wire Size	9 @ 18 AWG
Motor Standards	Other
Motor Type	3524M
Mounting Arrangement	F1
Overall Length	23.24 IN
Product Family	Grinder
Service Factor	1.00
Shaft Rotation	Phase Seq-Opp Std Rot (CWOE)
Shaft Slinger Indicator	No Slinger
Speed Code	Single Speed
Starting Method	Direct on line
Thermal Device - Winding	None
Winding Thermal 1	None
Winding Thermal 2	None

Nameplate

NP0113			
CAT.NO.	8102WD		
HP	.75	VOLTS	208-230/460
PHASE	3	AMPS	3/1.5
HZ	50//60	RPM	1500//1800
SER.NO			
SPEC.	G8-236G0377		

Accessories

Part number	Description	Multiplier
GA16	PEDESTAL INDUSTRIAL, CAST IRON 6" - 10"	A8
GA14	PEDESTAL FABRICATED STEEL W/SHELVES	A8
GA20	PEDESTAL INDUSTRIAL, CAST IRON 8"-14"	A8
GA20E	PEDESTAL LIGHT INDUSTRIAL,STEEL	A8
B80	8" 36 GRIT GRINDING WHEEL	A8
B81	8" 60 GRIT GRINDING WHEEL	A8
GA9	PAIR LIGHTED EYESHIELDS	A8
GA9-1	SINGLE LIGHTED EYESHIELD	A8
GA9S	PAIR EYESHIELDS W/ ON-OFF SWITCH	A8
GA11	PAIR EYESHIELDS	A8
DC8	DUST CONTROL UNIT	A8

ABB Motors and Mechanical Inc.

WINDING # G8WG0377

0.75 HP 3 PH 50 HZ 1460 RPM 460 V G824M

Typical performance - not guaranteed values.

TORQUES (LB-FT): PO=15.71 PU=12.63 LR=14.64 LRA=13.78

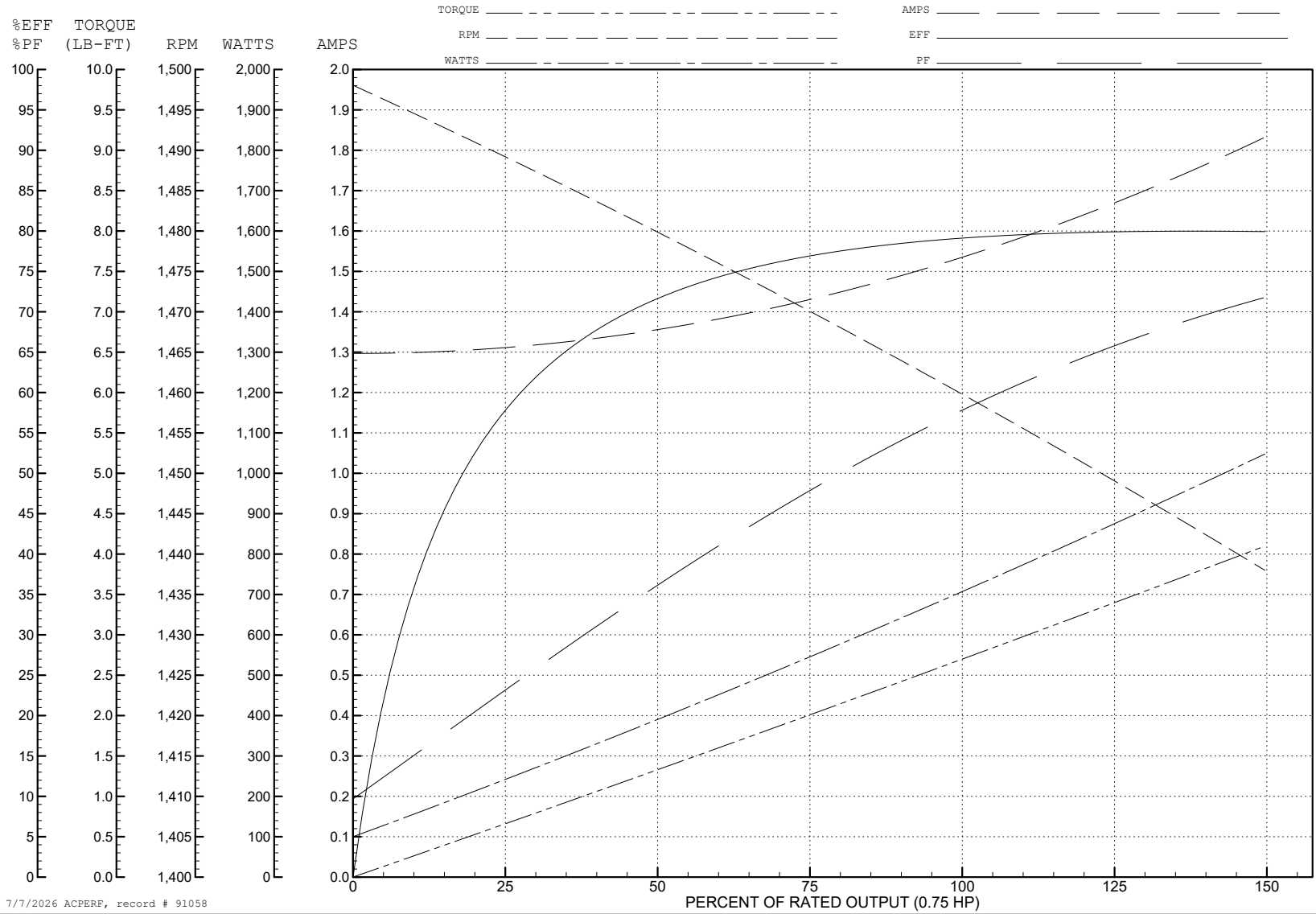


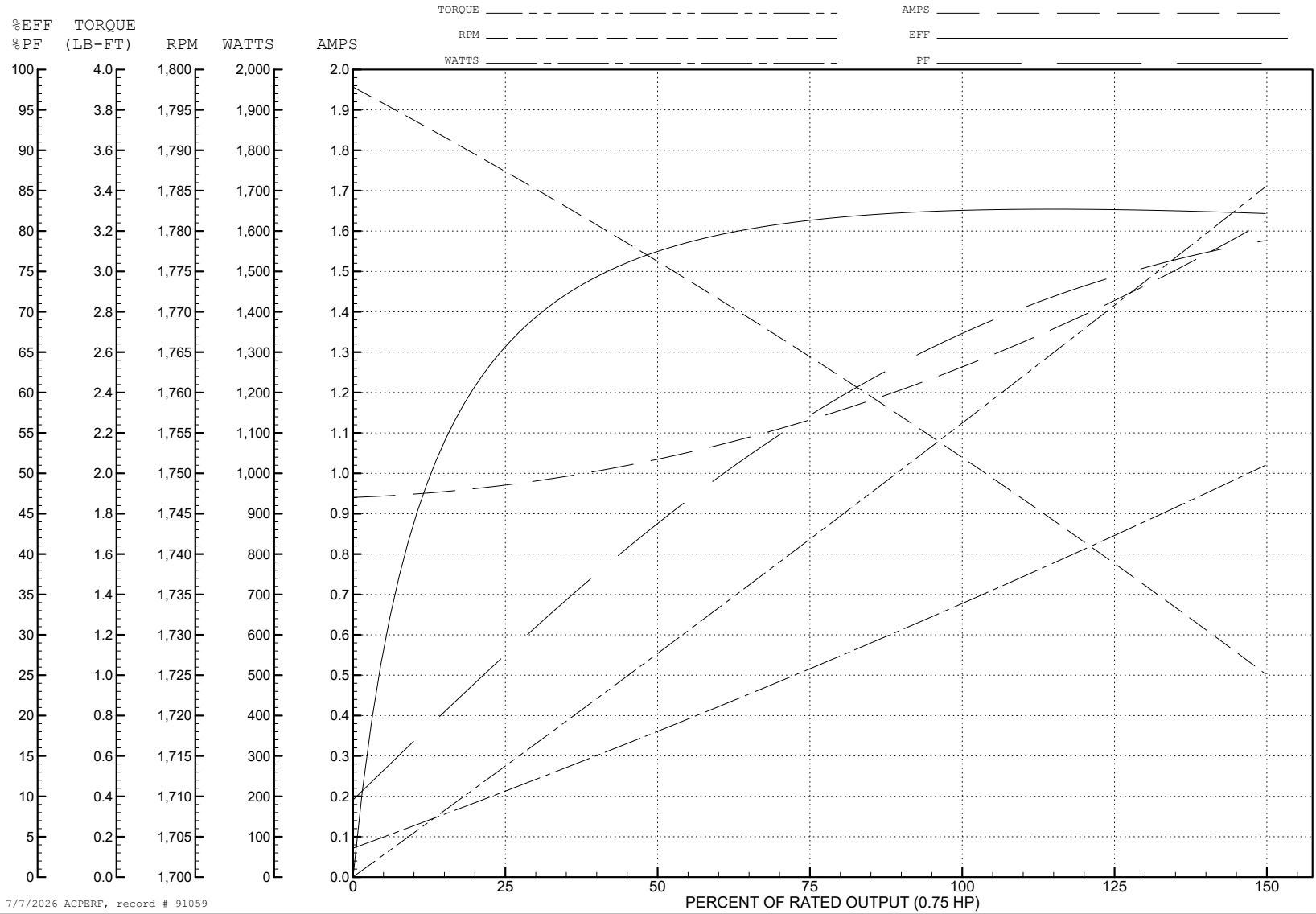
ABB Motors and Mechanical Inc.

WINDING # G8WG0377

0.75 HP 3 PH 60 HZ 1752 RPM 460 V G824M

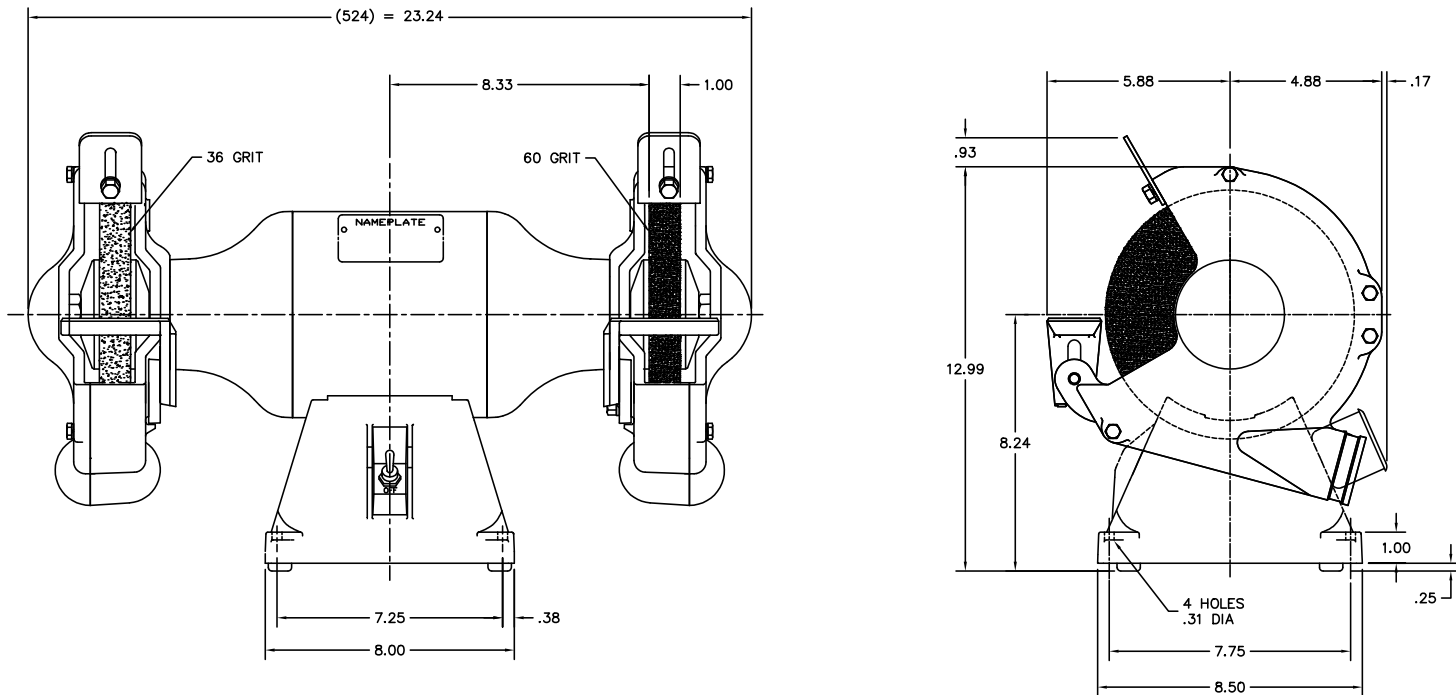
Typical performance - not guaranteed values.

TORQUES (LB-FT): PO=12.14 PU=9.18 LR=10.64 LRA=12.71



7/7/2026 ACPERF, record # 91059

GBLY0236



CUSTOMER IS RESPONSIBLE FOR DETERMINING THAT MOTOR PERFORMANCE IS SUITABLE IN THE APPLICATION.

REV. DESC:	OMITTED FELT WSHR HA1025A03 & CHG'D TO SEALED BRGS
REV. LTR:	D BY: SSS REVISED: 09/29/00 2:38 TDR: D212666
FILE:	AAA00036170 REF: -
MTL:	-

BALDOR ELECTRIC Co.

STD 8" GRINDER 524M W/EYESHIELDS, WATER POT, TOOL REST

GBLY0236

CD0005



LOW VOLTAGE
(2Y)



LINE

HIGH VOLTAGE
(1Y)



LINE

NOTES:

1. INTERCHANGE ANY TWO LINE LEADS TO REVERSE ROTATION.
2. OPTIONAL THERMOSTATS ARE PROVIDED WHEN SPECIFIED.
3. ACTUAL NUMBER OF INTERNAL PARALLEL CIRCUITS MAY BE A MULTIPLE OF THOSE SHOWN ABOVE.
4. LEAD COLORS ARE OPTIONAL. LEADS MUST ALWAYS BE NUMBERED AS SHOWN.

CD0005

REV. DESC: REVISE TO SHOW OPTIONAL COLORS

REV. LTR: E BY: JLP REVISED: 01/19/99 10:15 TDR: 0171435

500000

FILE: AAA00005140

MDL: -

MTL: -

BALDOR ELECTRIC Co.

3PH, DV, 9 LEADS

