

ABB BALDOR RELIANCE III

Customer information packet

8102W

24M 4P GRNDR

Copyright © All product information within this document is subject to ABB Motors and Mechanical Inc. copyright © protection, unless otherwise noted.

7/7/2026 10:21:04 PM

Specifications

Enclosure	TENV
Frame Material	Steel
Frequency	50.00 Hz 60.00 Hz 50.00 Hz 60.00 Hz
Motor Letter Type	Three Phase
Nameplate Output	.75
Number of Poles	4 4
Output @ Frequency	.750 HP @ 60 HZ .750 HP @ 50 HZ
Phase	3 3
Shaft Diameter	0.750 IN 0.750 IN
Speed	1500 rpm 1800 rpm 1500 rpm 1800 rpm
Synchronous Speed @ Frequency	1800 RPM @ 60 HZ
Voltage	208 V 230 V 460 V
Voltage @ Frequency	208.0 V @ 50 HZ 208.0 V @ 60 HZ 460.0 V @ 60 HZ 460.0 V @ 50 HZ 230.0 V @ 60 HZ 230.0 V @ 50 HZ
Agency Approvals	CSA
Ambient Temperature	40 °C
Base Indicator	Rigid

Part Detail

Revision	A
Type	AC
Mech. spec.	G8-166
Base	
Status	PRD/A
Elec. spec.	G8WG0377
Layout	G8LY0166
Eff. date	07-17-2024
CD Diagram	CD0005
Poles	04
Leads	9#18
Proprietary	False
Created date	02-23-2023

Bearing Grease Type	Polyrex EM (-20F +300F)
Current @ Voltage	3.000 A @ 230.0 V 3.000 A @ 208.0 V 1.500 A @ 460.0 V
Design Code	-
Duty Rating	CONT
Feedback Device	NO FEEDBACK
Insulation Class	B
KVA Code	-
Motor Lead Quantity/Wire Size	9 @ 18 AWG
Motor Standards	Other
Motor Type	3524M
Mounting Arrangement	F1
Overall Length	23.24 IN
Product Family	Grinder
Service Factor	1.00
Shaft Rotation	Phase Seq-Opp Std Rot (CWOE)
Shaft Slinger Indicator	No Slinger
Speed Code	Single Speed
Starting Method	Direct on line
Thermal Device - Winding	None
Winding Thermal 1	None
Winding Thermal 2	None

Nameplate

NP0113			
CAT.NO.	8102W		
HP	.75	VOLTS	208-230/460
PHASE	3	AMPS	3/1.5
HZ	50//60	RPM	1500//1800
SER.NO			
SPEC.	G8-166G0377		

Accessories

Part number	Description	Multiplier
GA16	PEDESTAL INDUSTRIAL, CAST IRON 6" - 10"	A8
GA14	PEDESTAL FABRICATED STEEL W/SHELVES	A8
GA20	PEDESTAL INDUSTRIAL, CAST IRON 8"-14"	A8
GA20E	PEDESTAL LIGHT INDUSTRIAL,STEEL	A8
GA24	WATER POT	A8
B80	8" 36 GRIT GRINDING WHEEL	A8
B81	8" 60 GRIT GRINDING WHEEL	A8
GA9	PAIR LIGHTED EYESHIELDS	A8
GA9-1	SINGLE LIGHTED EYESHIELD	A8
GA9S	PAIR EYESHIELDS W/ ON-OFF SWITCH	A8
GA11	PAIR EYESHIELDS	A8
DC8	DUST CONTROL UNIT	A8

ABB Motors and Mechanical Inc.

WINDING # G8WG0377

0.75 HP 3 PH 50 HZ 1460 RPM 460 V G824M

Typical performance - not guaranteed values.

TORQUES (LB-FT): PO=15.71 PU=12.63 LR=14.64 LRA=13.78

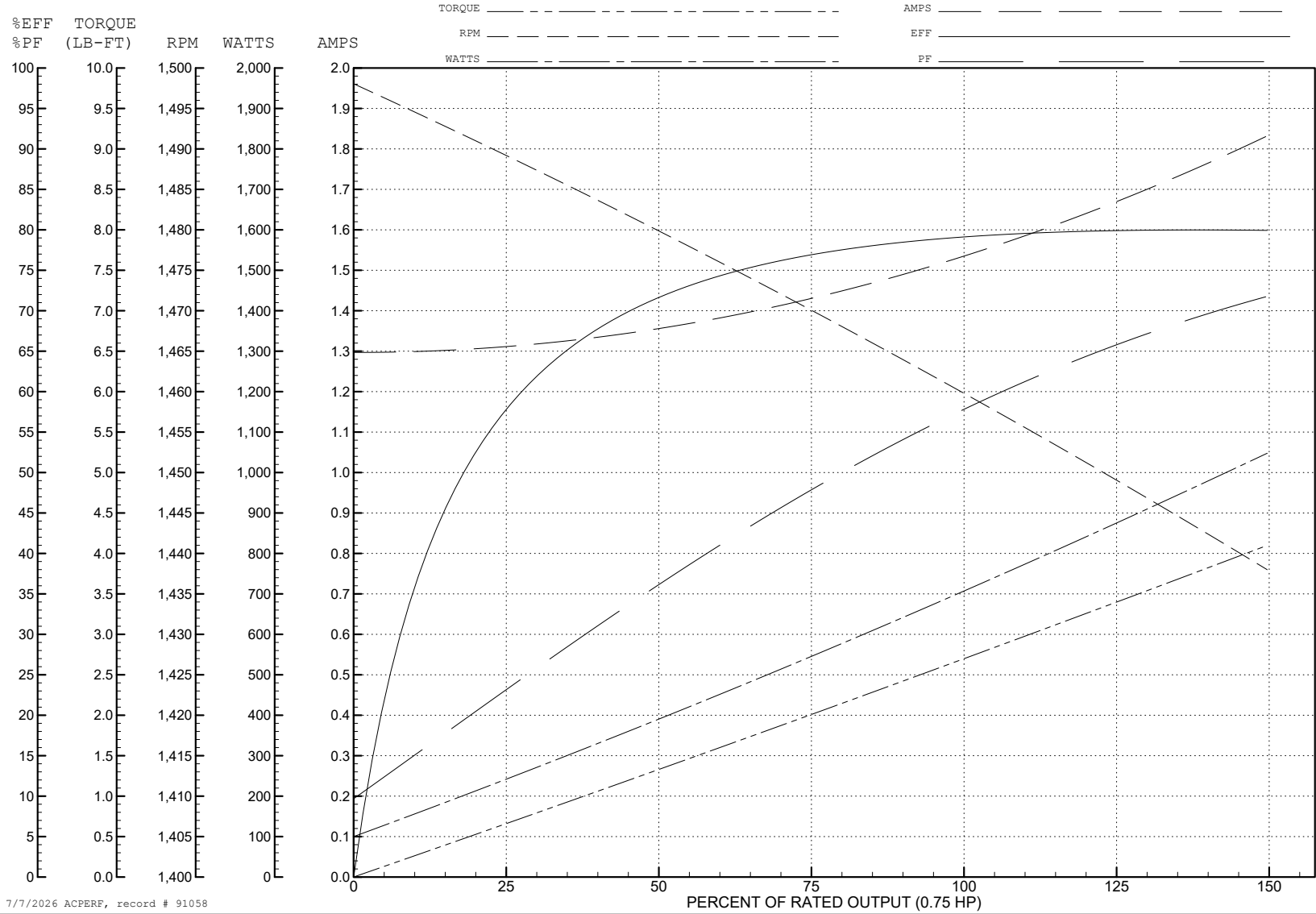


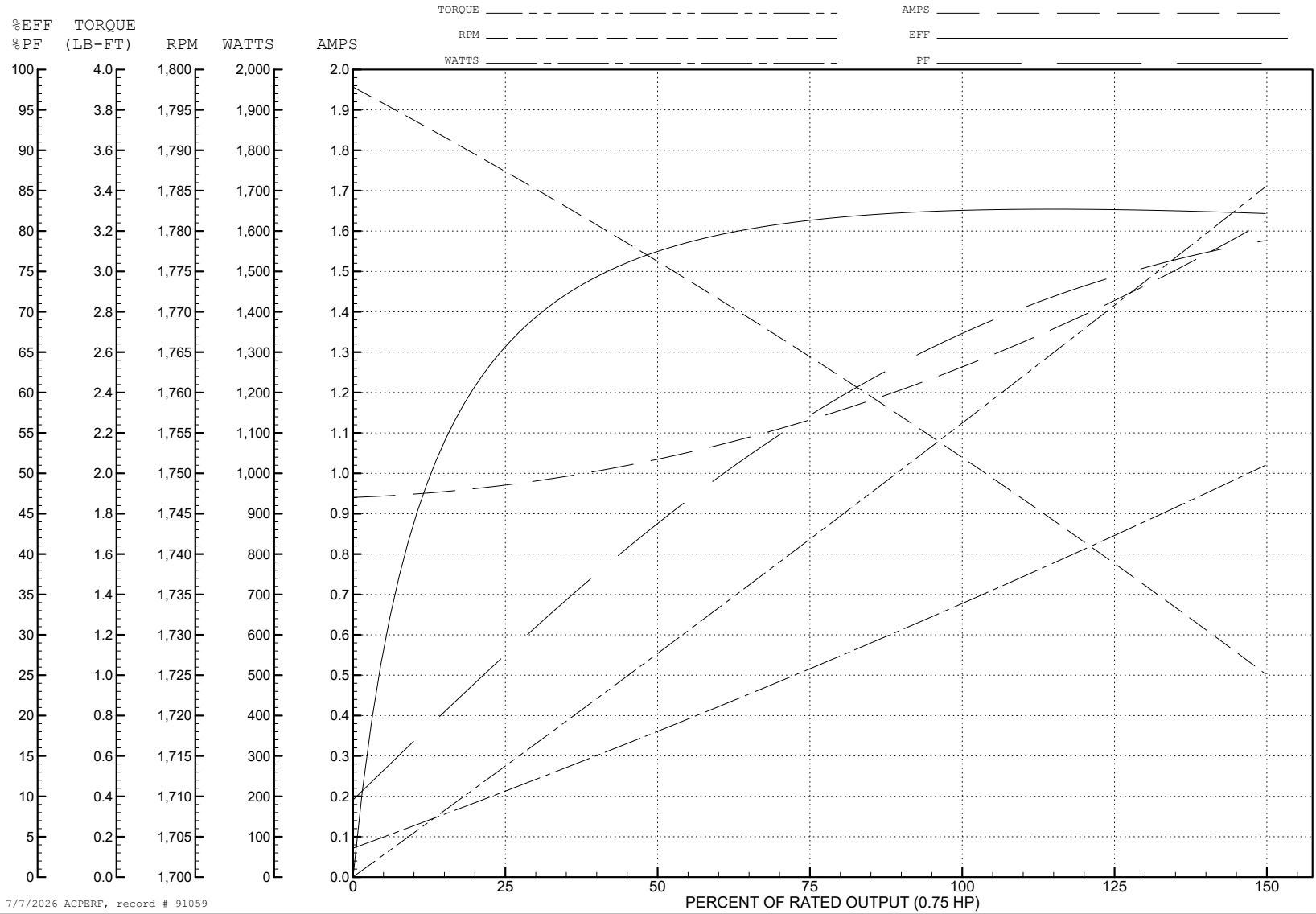
ABB Motors and Mechanical Inc.

WINDING # G8WG0377

0.75 HP 3 PH 60 HZ 1752 RPM 460 V G824M

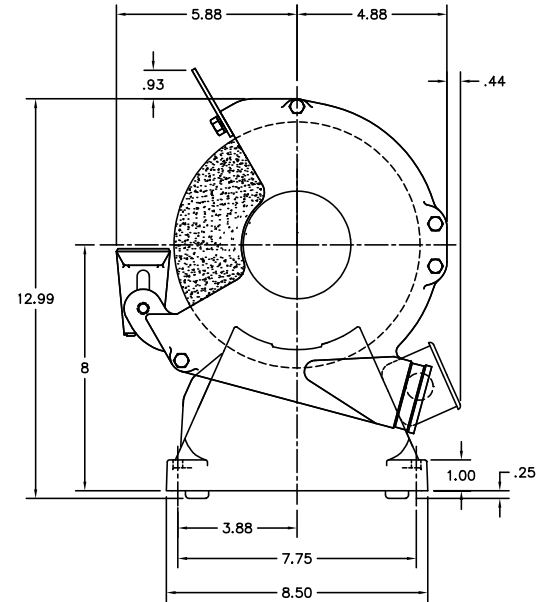
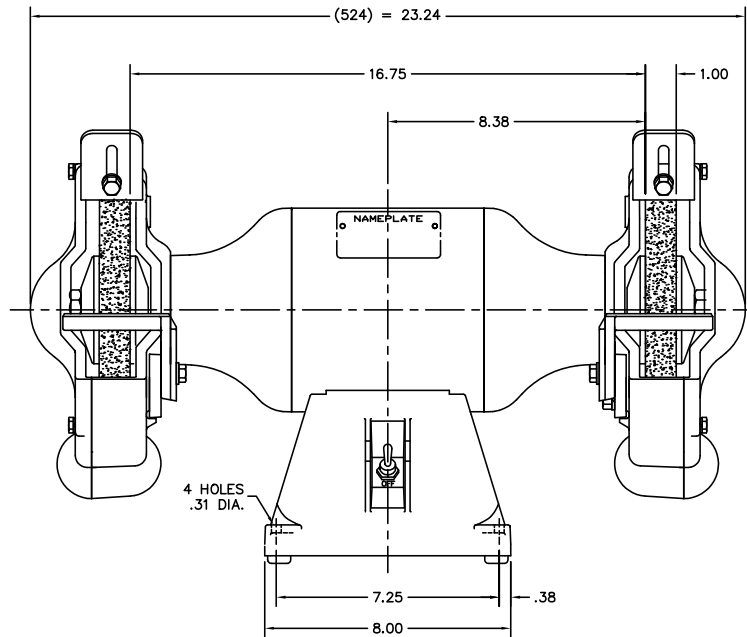
Typical performance - not guaranteed values.

TORQUES (LB-FT): PO=12.14 PU=9.18 LR=10.64 LRA=12.71



7/7/2026 ACPERF, record # 91059

GBLY0166



CUSTOMER IS RESPONSIBLE FOR DETERMINING THAT MOTOR PERFORMANCE IS SUITABLE IN THE APPLICATION.

REV. DESC:	OMITTED FELT WSHR HA1025A03 & CHG'D TO SEALED BRGS
REV. LTR:	H BY: SSS REVISED: 09/29/00 12:54 TDR: 0212666
FILE:	AAA00064345 REF: -
MTL:	-

BALDOR ELECTRIC Co.

8" GRINDER TENV MODEL 524M

GBLY0166

CD0005



LOW VOLTAGE
(2Y)



LINE

HIGH VOLTAGE
(1Y)



LINE

NOTES:

1. INTERCHANGE ANY TWO LINE LEADS TO REVERSE ROTATION.
2. OPTIONAL THERMOSTATS ARE PROVIDED WHEN SPECIFIED.
3. ACTUAL NUMBER OF INTERNAL PARALLEL CIRCUITS MAY BE A MULTIPLE OF THOSE SHOWN ABOVE.
4. LEAD COLORS ARE OPTIONAL. LEADS MUST ALWAYS BE NUMBERED AS SHOWN.

CD0005

REV. DESC: REVISE TO SHOW OPTIONAL COLORS

REV. LTR: E BY: JLP REVISED: 01/19/99 10:15 TDR: 0171435

500000

FILE: AAA00005140

MDL: -

MTL: -

BALDOR ELECTRIC Co.

3PH, DV, 9 LEADS