

**BALDOR • RELIANCE**

---

# Customer information packet

## 7312D

.5/.3HP, 3600/1800RPM, 1PH, 60HZ, 3428LC

**Specifications**

<b>Frequency</b>	60.00 Hz
<b>Nameplate Output</b>	.5/.3
<b>Number of Poles</b>	2
	4
<b>Phase</b>	1
<b>Product Style</b>	GRINDER
<b>Speed</b>	1800 rpm
	3600 rpm
<b>Voltage</b>	115 V

**Part detail**

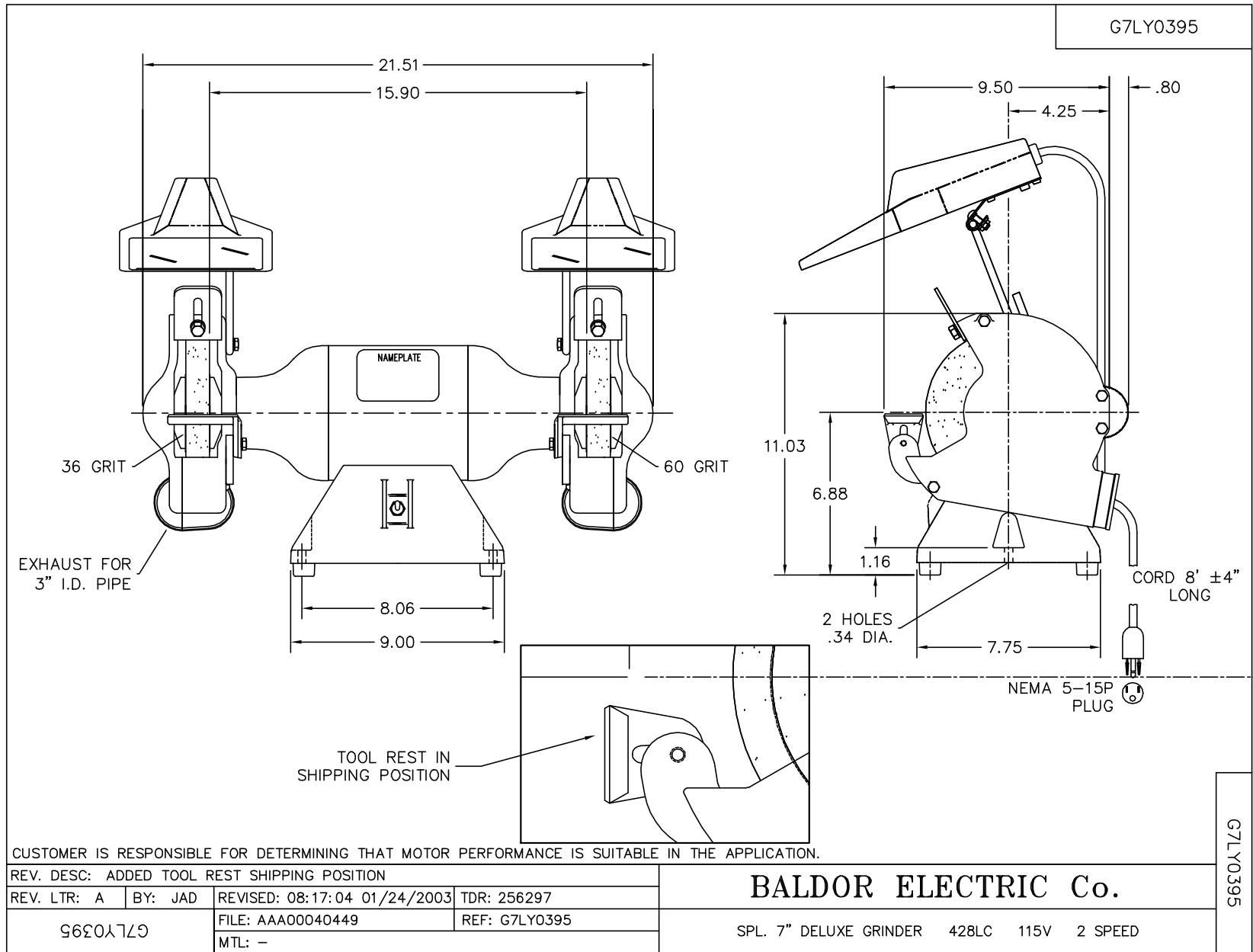
<b>Revision</b>	AD
<b>Type</b>	AC
<b>Mech. spec.</b>	G7-0395
<b>Base</b>	
<b>Status</b>	PRD/A
<b>Elec. spec.</b>	G7WG0108
<b>Layout</b>	G7LY0395
<b>Eff. date</b>	06-23-2023
<b>CD Diagram</b>	CD0354
<b>Poles</b>	02/04
<b>Leads</b>	6#18
<b>Proprietary</b>	False
<b>Created date</b>	01-01-0001

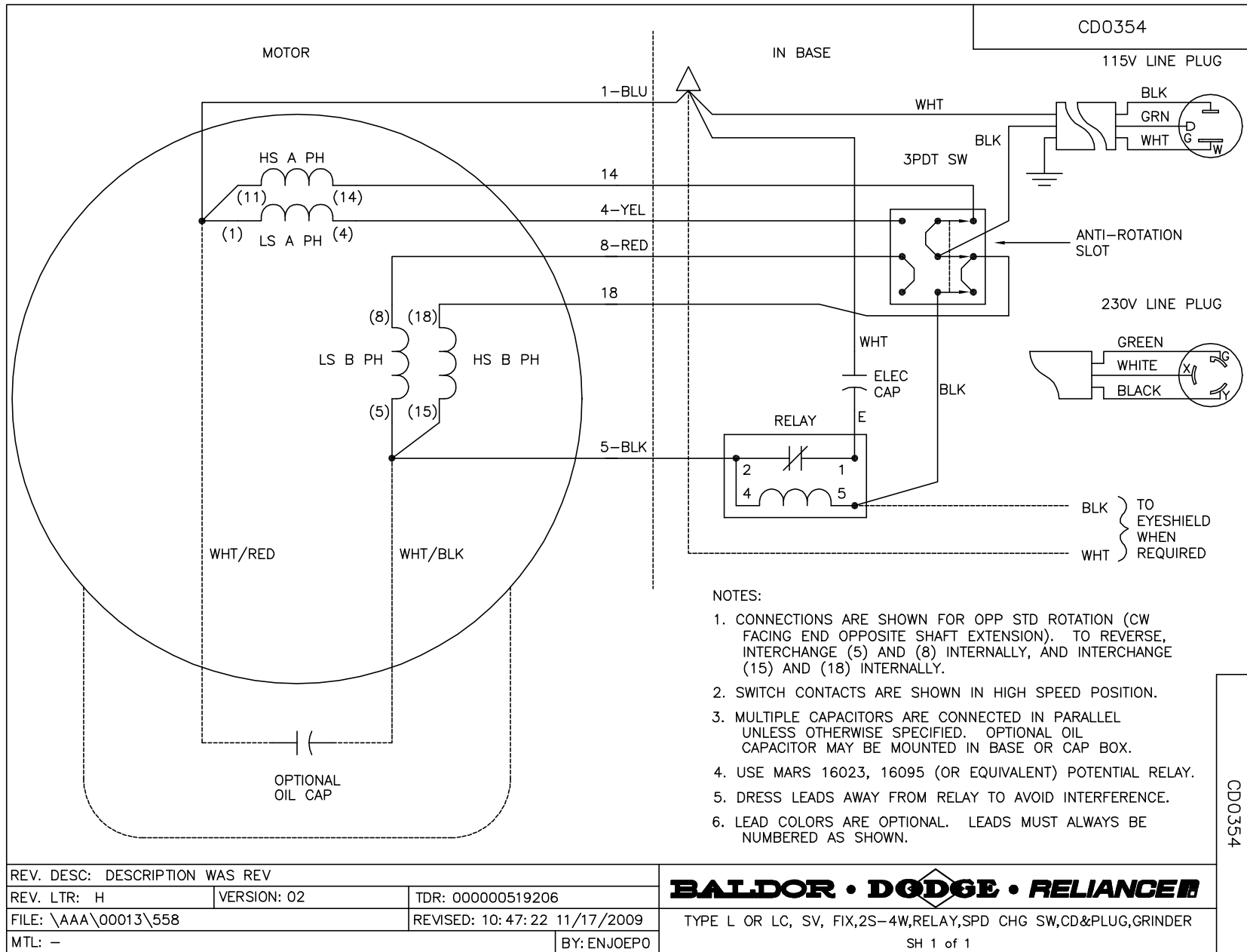
**Nameplate**

<b>NP3118</b>			
<b>CAT.NO.</b>	7312D		
<b>HP</b>	.5/.3	<b>VOLTS</b>	115
<b>PHASE</b>	1	<b>AMPS</b>	5/3.6
<b>HZ</b>	60	<b>RPM</b>	3600/1800
<b>SER.NO</b>			
<b>SPEC.</b>	G7-0395-0108		

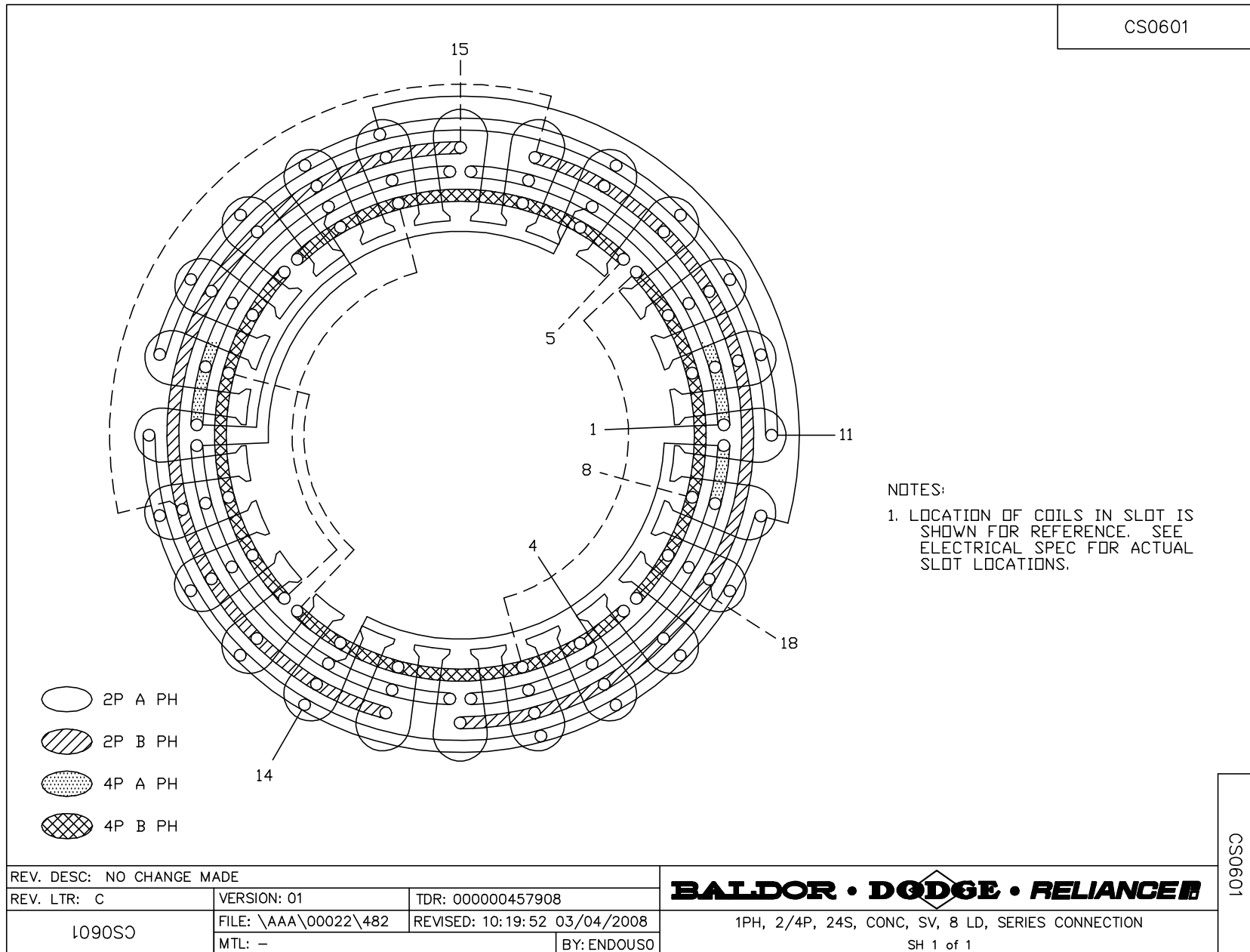
**Accessories**

<b>Part number</b>	<b>Description</b>	<b>Multiplier</b>
GA16E	PEDESTAL LIGHT INDUSTRIAL,STEEL	A8
GA16	PEDESTAL INDUSTRIAL, CAST IRON 6" - 10"	A8
GA14	PEDESTAL FABRICATED STEEL W/SHELVES	A8
B73	7" 36 GRIT GRINDING WHEEL	A8
B74	7" 60 GRIT GRINDING WHEEL	A8
GA9	PAIR LIGHTED EYESHIELDS	A8
GA9-1	SINGLE LIGHTED EYESHIELD	A8
GA9S	PAIR EYESHIELDS W/ ON-OFF SWITCH	A8
GA11	PAIR EYESHIELDS	A8
BQ1-015-CC	1PH Brake, NEMA 1,110-125 VAC, 50/60Hz	
BQ1-015-CP	1PH Brake, Panel 110-125 VAC, 50/60 Hz	
DC7	DUST CONTROL UNIT	A8





CS0601



NOTES:  
 1. LOCATION OF COILS IN SLOT IS SHOWN FOR REFERENCE. SEE ELECTRICAL SPEC FOR ACTUAL SLOT LOCATIONS.

REV. DESC: NO CHANGE MADE		
REV. LTR: C	VERSION: 01	TDR: 000000457908
L090S0	FILE: \AAA\00022\482	REVISED: 10:19:52 03/04/2008
	MTL: -	BY: ENDOUS0

**BALDOR • DODGE • RELIANCE**

1PH, 2/4P, 24S, CONC, SV, 8 LD, SERIES CONNECTION

SH 1 of 1

CS0601