

ABB BALDOR RELIANCE III



Customer information packet 7309D

.5HP, 3000/3600RPM, 3PH, 50/60HZ, 3420M, GRND

Specifications

Enclosure	GRND
Frame Material	Steel
Frequency	50.00 Hz 60.00 Hz 50.00 Hz 60.00 Hz
Motor Letter Type	Three Phase
Nameplate Output	.5
Number of Poles	2 2
Output @ Frequency	.500 HP @ 60 HZ .500 HP @ 50 HZ
Phase	3 3
Product Style	GRINDER
Speed	3000 rpm 3600 rpm 3000 rpm 3600 rpm
Synchronous Speed @ Frequency	3600 RPM @ 60 HZ
Voltage	208 V 230 V 460 V
Voltage @ Frequency	208.0 V @ 60 HZ 208.0 V @ 50 HZ 230.0 V @ 50 HZ 230.0 V @ 60 HZ 460.0 V @ 50 HZ 460.0 V @ 60 HZ
Agency Approvals	CSA
Ambient Temperature	40 °C
Base Indicator	Rigid

Part Detail

Revision	AP
Type	AC
Mech. spec.	G7-0312
Base	
Status	PRD/A
Elec. spec.	G7WG0044
Layout	G7LY0312
Eff. date	06-23-2023
CD Diagram	CD0005
Poles	02
Leads	9#18
Proprietary	False
Created date	01-01-0001

Bearing Grease Type	Polyrex EM (-20F +300F)
Current @ Voltage	.400 A @ 460.0 V .800 A @ 230.0 V .850 A @ 208.0 V
Duty Rating	CONT
Feedback Device	NO FEEDBACK
Insulation Class	B
KVA Code	-
Motor Lead Quantity/Wire Size	9 @ 18 AWG
Motor Standards	Other
Motor Type	3420M
Mounting Arrangement	F1
Overall Length	20.89 IN
Product Family	Grinder
Service Factor	1.00
Shaft Extension Location	Double Shaft
Shaft Rotation	Reversible
Shaft Slinger Indicator	No Slinger
Speed Code	Single Speed
Starting Method	Direct on line
Thermal Device - Winding	None

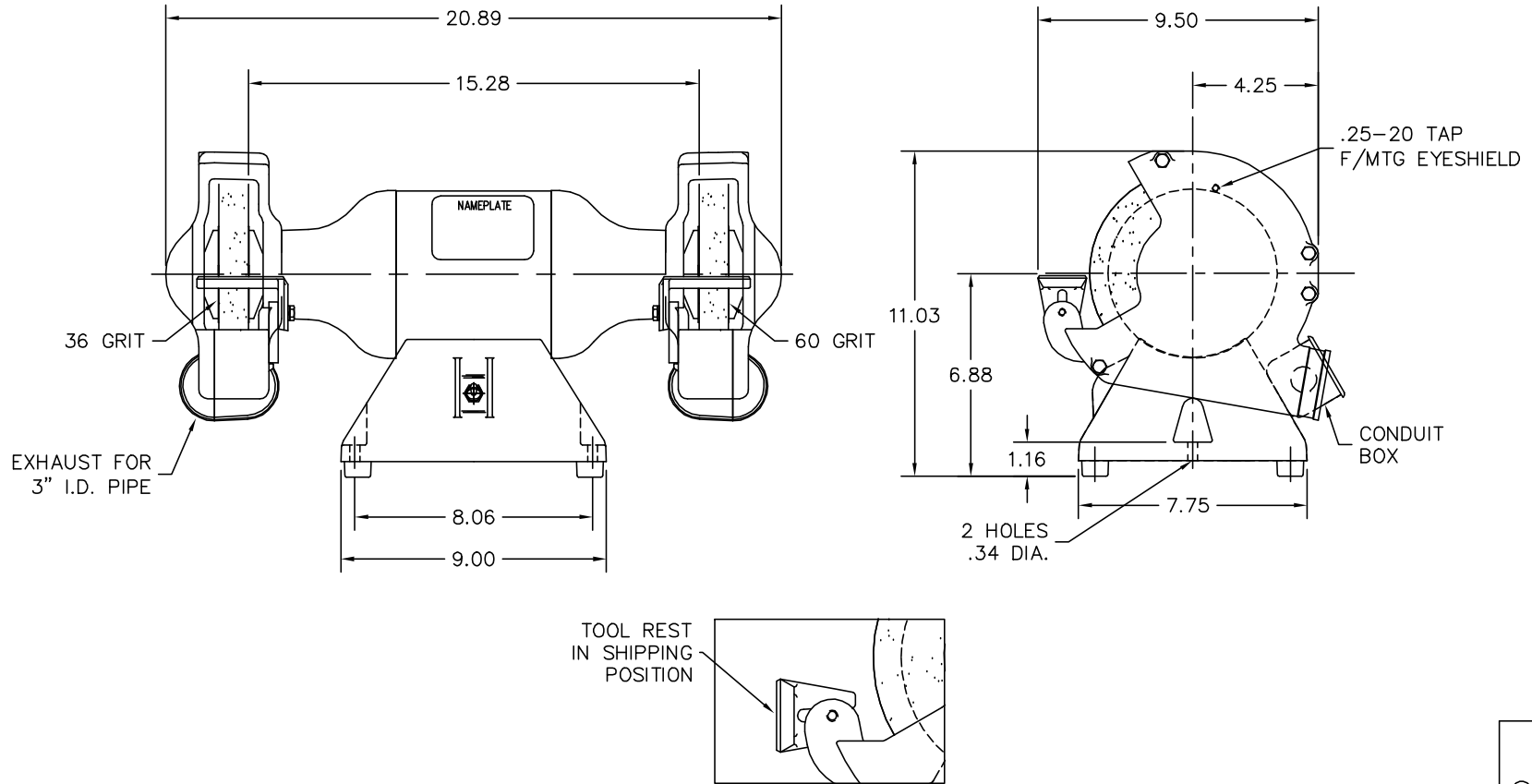
Nameplate

NP0113			
CAT.NO.	7309D		
HP	.5	VOLTS	208-230/460
PHASE	3	AMPS	.85-.8/.4
HZ	50//60	RPM	3000//3600
SER.NO			
SPEC.	G7-312-44		

Accessories

Part number	Description	Multiplier
GA16E	PEDESTAL LIGHT INDUSTRIAL,STEEL	A8
GA16	PEDESTAL INDUSTRIAL, CAST IRON 6" - 10"	A8
GA14	PEDESTAL FABRICATED STEEL W/SHELVES	A8
B73	7" 36 GRIT GRINDING WHEEL	A8
B74	7" 60 GRIT GRINDING WHEEL	A8
GA9	PAIR LIGHTED EYESHIELDS	A8
GA9-1	SINGLE LIGHTED EYESHIELD	A8
GA9S	PAIR EYESHIELDS W/ ON-OFF SWITCH	A8
GA11	PAIR EYESHIELDS	A8
DC7	DUST CONTROL UNIT	A8

G7LY0312



CUSTOMER IS RESPONSIBLE FOR DETERMINING THAT MOTOR PERFORMANCE IS SUITABLE IN THE APPLICATION.

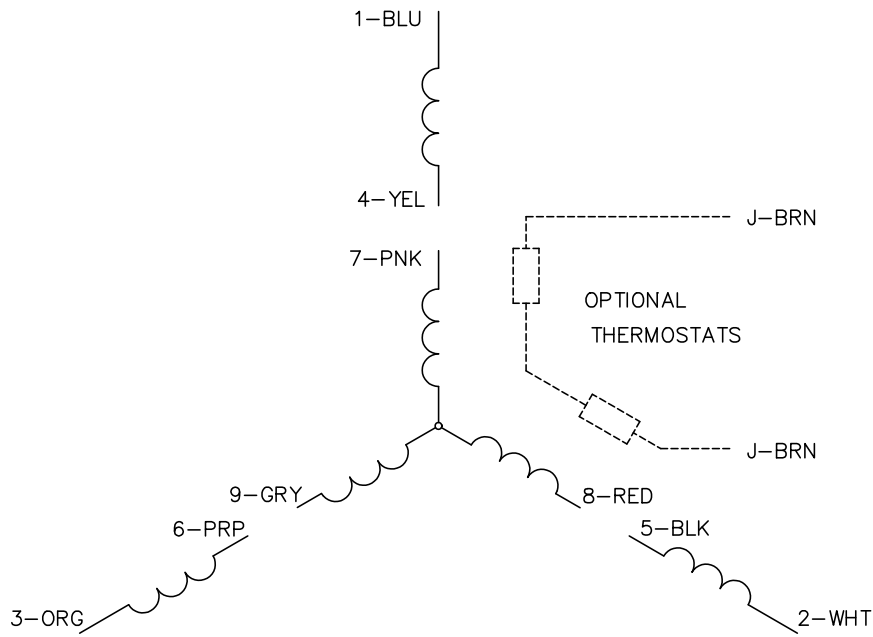
REV. DESC: REMOVE SPARK BREAKERS, TO BE PACKED		
REV. LTR: J	VERSION: 01	TDR: 000000429573
7120Y0312	FILE: \AAA\00045\868	REVISED: 10:17:23 04/24/2007
	MTL: -	BY: ENMARW1

BALDOR ELECTRIC Co.

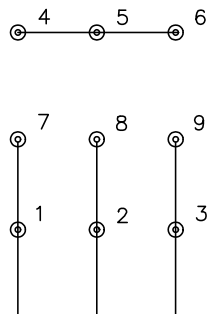
7" DELUXE GRINDER TYPE M, CAT NO'S 7308D & 7309D

G7LY0312

CD0005

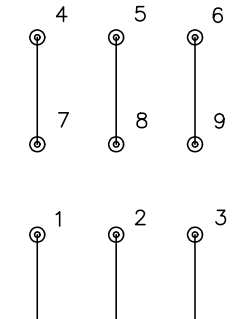


LOW VOLTAGE
(2Y)



LINE

HIGH VOLTAGE
(1Y)



LINE

NOTES:

1. INTERCHANGE ANY TWO LINE LEADS TO REVERSE ROTATION.
2. OPTIONAL THERMOSTATS ARE PROVIDED WHEN SPECIFIED.
3. ACTUAL NUMBER OF INTERNAL PARALLEL CIRCUITS MAY BE A MULTIPLE OF THOSE SHOWN ABOVE.
4. LEAD COLORS ARE OPTIONAL. LEADS MUST ALWAYS BE NUMBERED AS SHOWN.

CD0005

REV. DESC: REVISE TO SHOW OPTIONAL COLORS			
REV. LTR: E	BY: JLP	REVISED: 01/19/99 10:15	TDR: 0171435
S00000		FILE: AAA00005140	MDL: -
		MTL: -	

BALDOR ELECTRIC Co.

3PH, DV, 9 LEADS

