

BALDOR • RELIANCE

Customer information packet 7308

.5HP, 1500/1800RPM, 3PH, 50/60HZ, 3420M, GRND

Specifications

Frequency	50.00 Hz
	60.00 Hz
Nameplate Output	.5
Number of Poles	4
Phase	3
Product Style	GRINDER
Speed	1500 rpm
	1800 rpm
Voltage	208 V
	230 V
	460 V

Part detail

Revision	AQ
Type	AC
Mech. spec.	G7-0311
Base	
Status	PRD/A
Elec. spec.	G7WG0045
Layout	G7LY0311
Eff. date	06-23-2023
CD Diagram	CD0005
Poles	04
Leads	9#18 SEE NOTES Y
Proprietary	False
Created date	01-01-0001

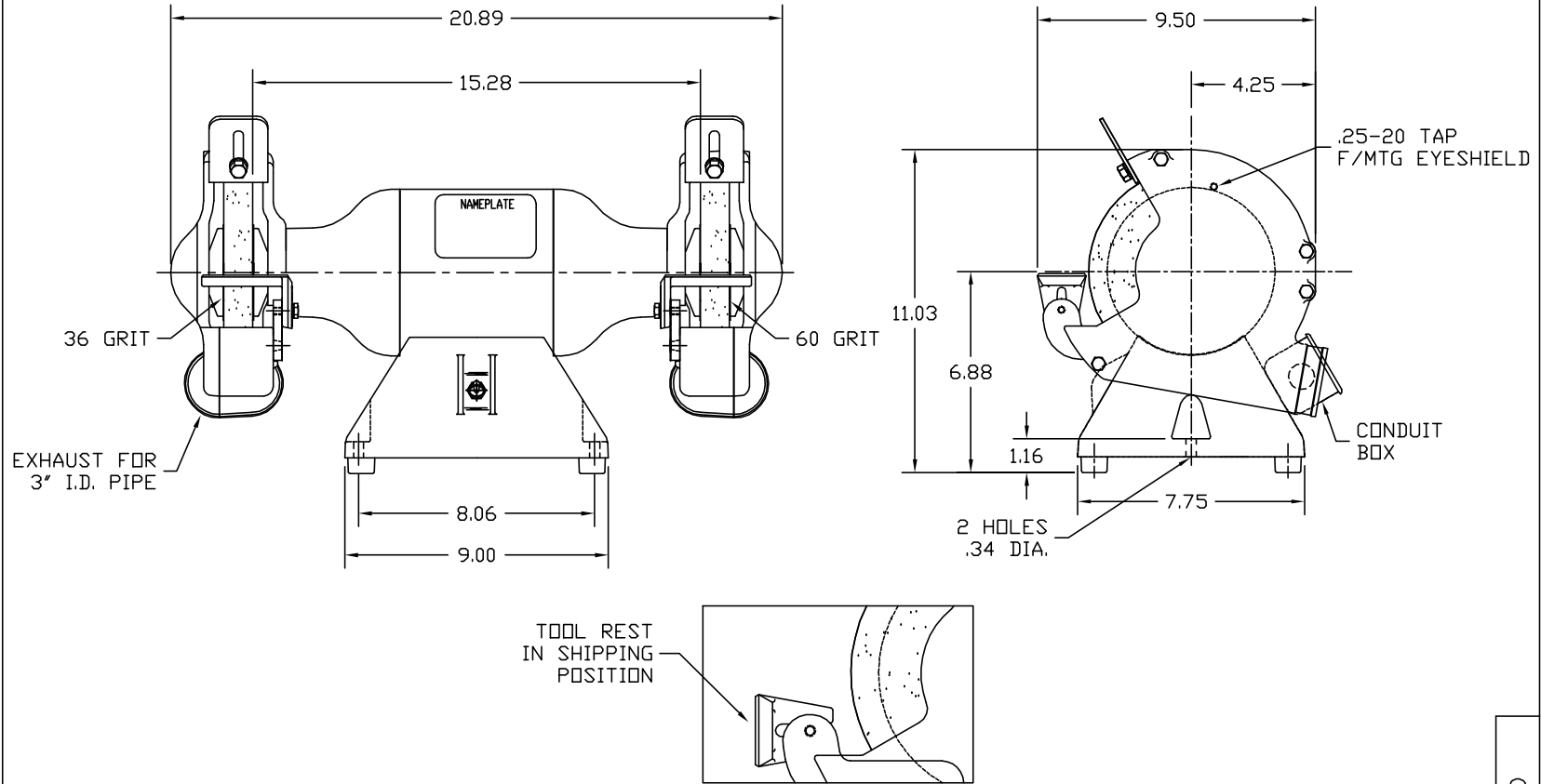
Nameplate

NP0113			
CAT.NO.	7308		
HP	.5	VOLTS	208-230/460
PHASE	3	AMPS	1.5-1.4/.7
HZ	50//60	RPM	1500//1800
SER.NO			
SPEC.	G7-311-45		

Accessories

Part number	Description	Multiplier
GA16E	PEDESTAL LIGHT INDUSTRIAL,STEEL	A8
GA16	PEDESTAL INDUSTRIAL, CAST IRON 6" - 10"	A8
GA14	PEDESTAL FABRICATED STEEL W/SHELVES	A8
GA9	PAIR LIGHTED EYESHIELDS	A8
GA9-1	SINGLE LIGHTED EYESHIELD	A8
GA9S	PAIR EYESHIELDS W/ ON-OFF SWITCH	A8
GA11	PAIR EYESHIELDS	A8
GA24	WATER POT	A8
B73	7" 36 GRIT GRINDING WHEEL	A8
B74	7" 60 GRIT GRINDING WHEEL	A8
DC7	DUST CONTROL UNIT	A8

G7LY0311



CUSTOMER IS RESPONSIBLE FOR DETERMINING THAT MOTOR PERFORMANCE IS SUITABLE IN THE APPLICATION.

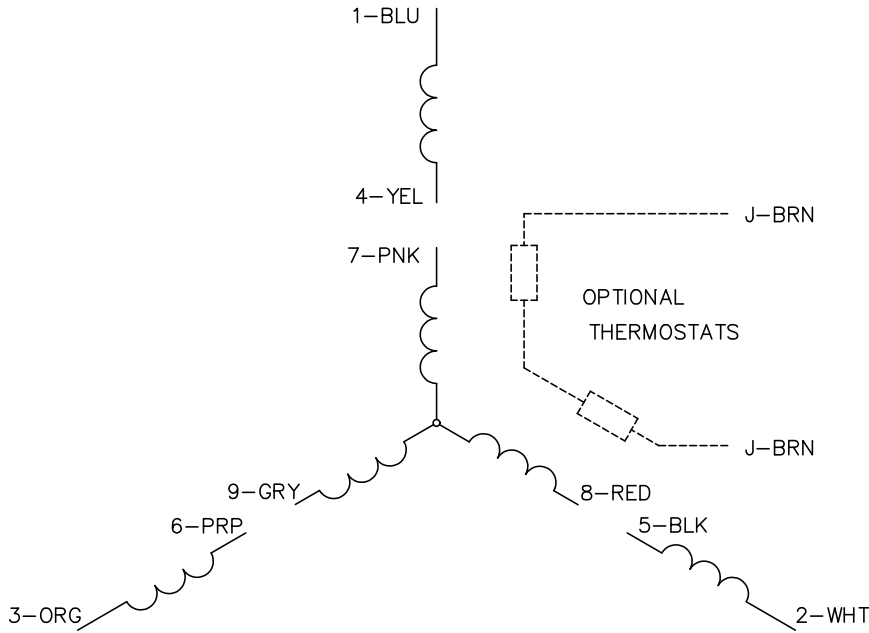
REV. DESC: ADDED TOOL REST SHIPPING POSITION VIEW			
REV. LTR: Q	BY: YTD	REVISED: 11:04:36 07/23/2002	TDR: 256297
1150317LG		FILE: AAA00021035	REF: G7LY0311
		MTL: -	

BALDOR ELECTRIC Co.

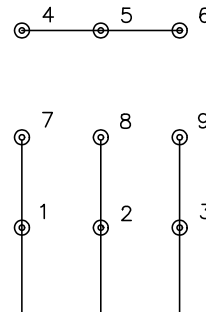
STD 7" DELUXE GRINDER TYPE M, CAT NO'S 7308 & 7309

G7LY0311

CD0005

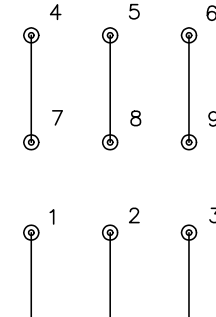


LOW VOLTAGE
(2Y)



LINE

HIGH VOLTAGE
(1Y)



LINE

NOTES:

1. INTERCHANGE ANY TWO LINE LEADS TO REVERSE ROTATION.
2. OPTIONAL THERMOSTATS ARE PROVIDED WHEN SPECIFIED.
3. ACTUAL NUMBER OF INTERNAL PARALLEL CIRCUITS MAY BE A MULTIPLE OF THOSE SHOWN ABOVE.
4. LEAD COLORS ARE OPTIONAL. LEADS MUST ALWAYS BE NUMBERED AS SHOWN.

CD0005

REV. DESC: REVISE TO SHOW OPTIONAL COLORS			
REV. LTR: E	BY: JLP	REVISED: 01/19/99 10:15	TDR: 0171435
S00000		FILE: AAA00005140	MDL: -
		MTL: -	

BALDOR ELECTRIC Co.

3PH, DV, 9 LEADS