

**BALDOR® • RELIANCE™**

---

# Customer information packet 712

.5HP, 3600RPM, 1PH, 60HZ, 3420C, GRND

**Specifications**

|                         |          |
|-------------------------|----------|
| <b>Frequency</b>        | 60.00 Hz |
| <b>Nameplate Output</b> | .5       |
| <b>Number of Poles</b>  | 2        |
| <b>Phase</b>            | 1        |
| <b>Product Style</b>    | GRINDER  |
| <b>Speed</b>            | 3600 rpm |
| <b>Voltage</b>          | 115 V    |

**Part detail**

|                     |            |
|---------------------|------------|
| <b>Revision</b>     | BB         |
| <b>Type</b>         | AC         |
| <b>Mech. spec.</b>  | G7-370     |
| <b>Base</b>         |            |
| <b>Status</b>       | PRD/A      |
| <b>Elec. spec.</b>  | G7WG0030   |
| <b>Layout</b>       | G7LY0370   |
| <b>Eff. date</b>    | 09-23-2022 |
| <b>CD Diagram</b>   | CD0279     |
| <b>Poles</b>        | 02         |
| <b>Leads</b>        | 4#18       |
| <b>Proprietary</b>  | False      |
| <b>Created date</b> | 01-01-0001 |

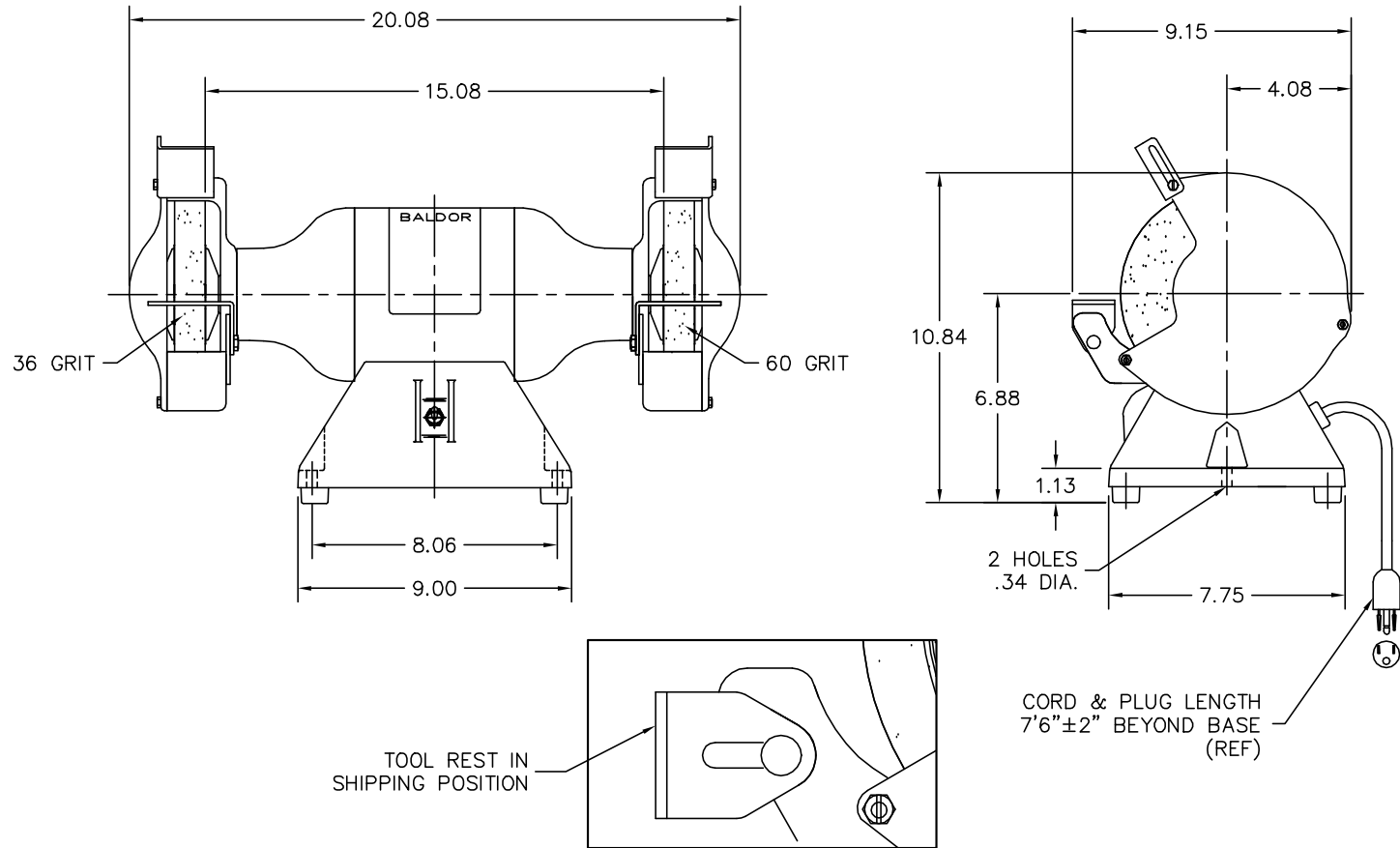
**Nameplate**

| <b>NP0113</b>  |           |              |      |
|----------------|-----------|--------------|------|
| <b>CAT.NO.</b> | 712       |              |      |
| <b>HP</b>      | .5        | <b>VOLTS</b> | 115  |
| <b>PHASE</b>   | 1         | <b>AMPS</b>  | 3.4  |
| <b>HZ</b>      | 60        | <b>RPM</b>   | 3600 |
| <b>SER.NO</b>  |           |              |      |
| <b>SPEC.</b>   | G7-370-30 |              |      |

**Accessories**

| <b>Part number</b> | <b>Description</b>                      | <b>Multiplier</b> |
|--------------------|---|-------------------|
| GA16E              | PEDESTAL LIGHT INDUSTRIAL,STEEL         | A8                |
| GA16               | PEDESTAL INDUSTRIAL, CAST IRON 6" - 10" | A8                |
| GA14               | PEDESTAL FABRICATED STEEL W/SHELVES     | A8                |
| B73                | 7" 36 GRIT GRINDING WHEEL               | A8                |
| B74                | 7" 60 GRIT GRINDING WHEEL               | A8                |
| GA9                | PAIR LIGHTED EYESHIELDS                 | A8                |
| GA9-1              | SINGLE LIGHTED EYESHIELD                | A8                |
| GA9S               | PAIR EYESHIELDS W/ ON-OFF SWITCH        | A8                |
| GA11               | PAIR EYESHIELDS                         | A8                |
| BQ1-015-CC         | 1PH Brake, NEMA 1,110-125 VAC, 50/60Hz  | P1                |
| BQ1-015-CP         | 1PH Brake, Panel 110-125 VAC, 50/60 Hz  |                   |

G7LY0370



TOOL REST IN SHIPPING POSITION

CORD & PLUG LENGTH  
7'6"±2" BEYOND BASE  
(REF)

CUSTOMER IS RESPONSIBLE FOR DETERMINING THAT BALDOR'S PRODUCT WILL PERFORM SUITABLY IN THE INTENDED APPLICATION.

|  |                              |                   |
|--|------------------------------|-------------------|
| REV. DESC: ADD CORD LENGTH REFERENCE PER PLANT |                              |                   |
| REV. LTR: T                                    | VERSION: 03                  | TDR: 000001029878 |
| FILE: \AAA\00100\735                           | REVISED: 09:10:38 05/25/2017 | BY: ENBENBO       |
| MTL: -   |                              |                   |

**BALDOR**

7" UTILITY GRINDER TYPE 420C 115 NON-EXHAUST

SH 1 of 1

G7LY0370

