

ABB BALDOR RELIANCE III

Customer information packet 510

.5HP, 3000/3600RPM, 3PH, 50/60HZ, 3524M

Specifications

Enclosure	TENV
Frame Material	Steel
Frequency	50.00 Hz 60.00 Hz 50.00 Hz 60.00 Hz
Motor Letter Type	Three Phase
Nameplate Output	.5
Number of Poles	2 2
Output @ Frequency	.500 HP @ 60 HZ .500 HP @ 50 HZ
Phase	3 3
Product Style	GRINDER
Speed	3000 rpm 3600 rpm 3000 rpm 3600 rpm
Synchronous Speed @ Frequency	3600 RPM @ 60 HZ
Voltage	208 V 230 V 460 V
Voltage @ Frequency	208.0 V @ 50 HZ 208.0 V @ 60 HZ 460.0 V @ 60 HZ 460.0 V @ 50 HZ 230.0 V @ 60 HZ 230.0 V @ 50 HZ
Agency Approvals	UR
Ambient Temperature	40 °C
Base Indicator	Rigid

Part Detail

Revision	BE
Type	AC
Mech. spec.	A-597
Base	
Status	PRD/A
Elec. spec.	G9WG0341
Layout	ALY0597
Eff. date	06-06-2023
CD Diagram	CD0294
Poles	02
Leads	9#18 12" LG Y
Proprietary	False
Created date	08-08-2007

Bearing Grease Type	Polyrex EM (-20F +300F)
Current @ Voltage	2.000 A @ 230.0 V 2.000 A @ 208.0 V 1.000 A @ 460.0 V 1.000 A @ 230.0 V
Design Code	-
Duty Rating	CONT
Feedback Device	NO FEEDBACK
Insulation Class	B
KVA Code	-
Motor Lead Quantity/Wire Size	9 @ 18 AWG
Motor Standards	Other
Motor Type	3524M
Mounting Arrangement	F1
Overall Length	15.31 IN
Product Family	Grinder
Service Factor	1.00
Shaft Extension Location	Pulley End
Shaft Rotation	Reversible
Shaft Slinger Indicator	No Slinger
Speed Code	Single Speed
Starting Method	Direct on line
Thermal Device - Winding	None

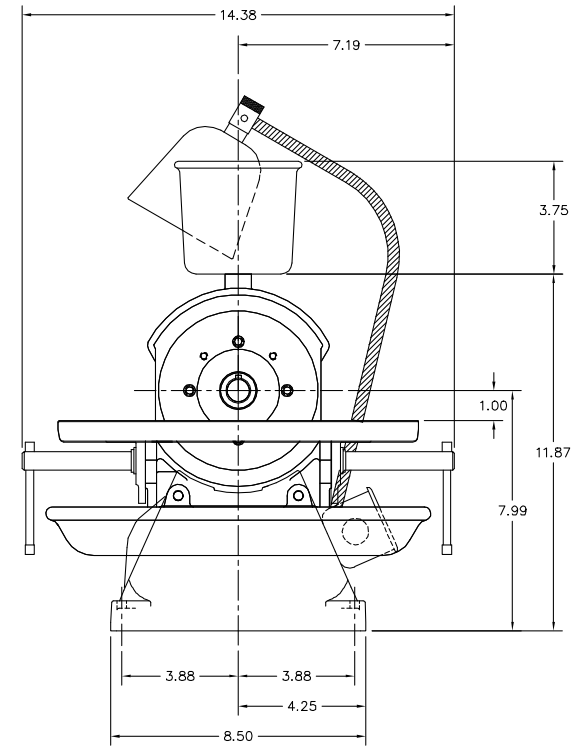
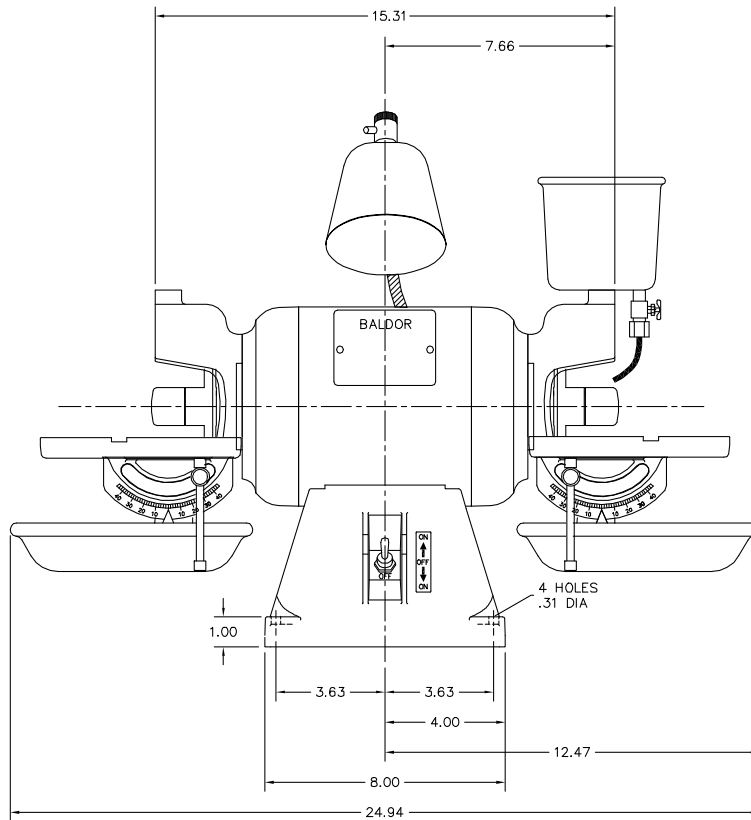
Nameplate

NP3118			
CAT.NO.	510		
HP	.5	VOLTS	208-230/460
PHASE	3	AMPS	2/1
HZ	50//60	RPM	3000//3600
SER.NO			
SPEC.	A-597-341		

Accessories

Part number	Description	Multiplier
GA16	PEDESTAL INDUSTRIAL, CAST IRON 6" - 10"	A8
GA14	PEDESTAL FABRICATED STEEL W/SHELVES	A8
GA20	PEDESTAL INDUSTRIAL, CAST IRON 8"-14"	A8
GA20E	PEDESTAL LIGHT INDUSTRIAL,STEEL	A8
GA7	DIAMOND NIB FOR GA8	A8
GA8	WHEEL DRESSER	A8
C61	60 GRIT CARBIDE GRINDING WHEEL	A8
C121	120 GRIT CARBIDE GRINDING WHEEL	A8
S46	46 GRIT GRINDING WHEEL/ALUM OXIDE	A8
S61	60 GRIT GRINDING WHEEL/ ALUM. OXIDE	A8

ALY0597



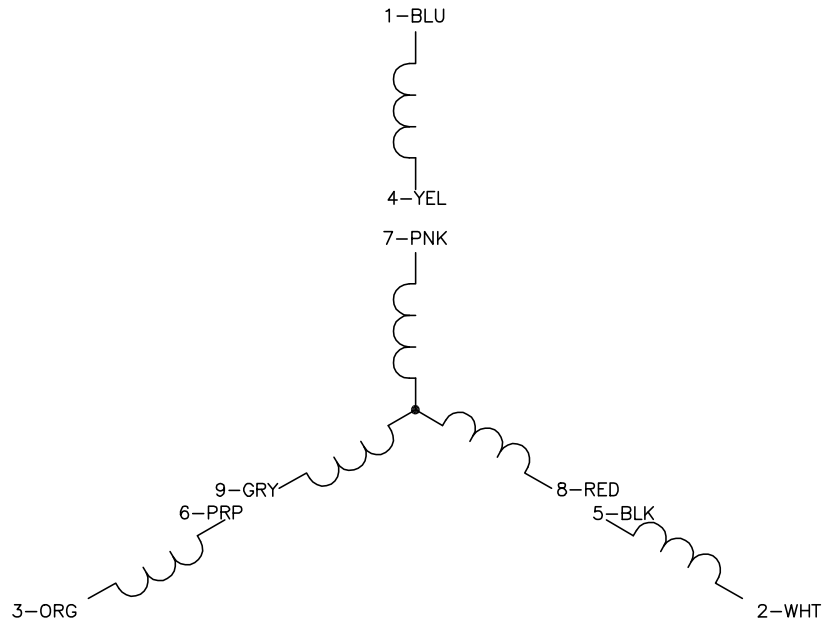
ALY0597

CUSTOMER IS RESPONSIBLE FOR DETERMINING THAT THE PRODUCT WILL PERFORM SUITABLY IN THE INTENDED APPLICATION.

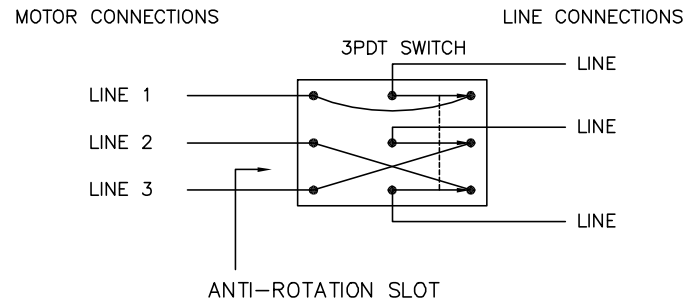
REV. DESC: REMOVE RUBBER FEET	VERSION: 01	TDR: 0000011831&3
REV. LTR: G	REvised: 01:10:51 12/17/2021	BY: USANEAT
FILE: \AAA\00050\789		
MTL: -		

BALDOR - RELIANCE®
STD CARBIDE TOOL GRINDER MODEL 35 524M FRAME
SH 1 of 1

CD0294



	LINE 1	LINE 2	LINE 3	JOIN 1	JOIN 2	JOIN 3
HIGH	1	2	3	4,7	5,8	6,9
LOW	1,7	2,8	3,9	4,5,6	-	-



NOTES:

1. INTERCHANGE ANY TWO LINE LEADS TO REVERSE ROTATION.
2. ACTUAL NUMBER OF INTERNAL PARALLEL CIRCUITS MAY VARY.
3. LEAD COLORS ARE OPTIONAL. LEADS MUST ALWAYS BE NUMBERED AS SHOWN.

REV. DESC: ADDED THE LCOATION OF ANTI-ROTATION SLOT		
REV. LTR: C	VERSION: 01	TDR: 000000406180
†6Z0D0	FILE: \AAA\00051\250	REVISED: 14:15:46 09/27/2006
	MTL: -	BY: ENALEMO

BALDOR ELECTRIC Co.

3PH, DV, 9 LEADS, 2PDT REVERSING SWITCH

CD0294