

BALDOR • RELIANCE

Customer information packet 359T

.5HP, 3450RPM, 1PH, 60HZ, 3520S, LATH

Specifications

Frequency	60.00 Hz
Nameplate Output	.5
Number of Poles	2
Phase	1
Product Style	DENTAL LATHE
Speed	3450 rpm
Voltage	115 V

Part detail

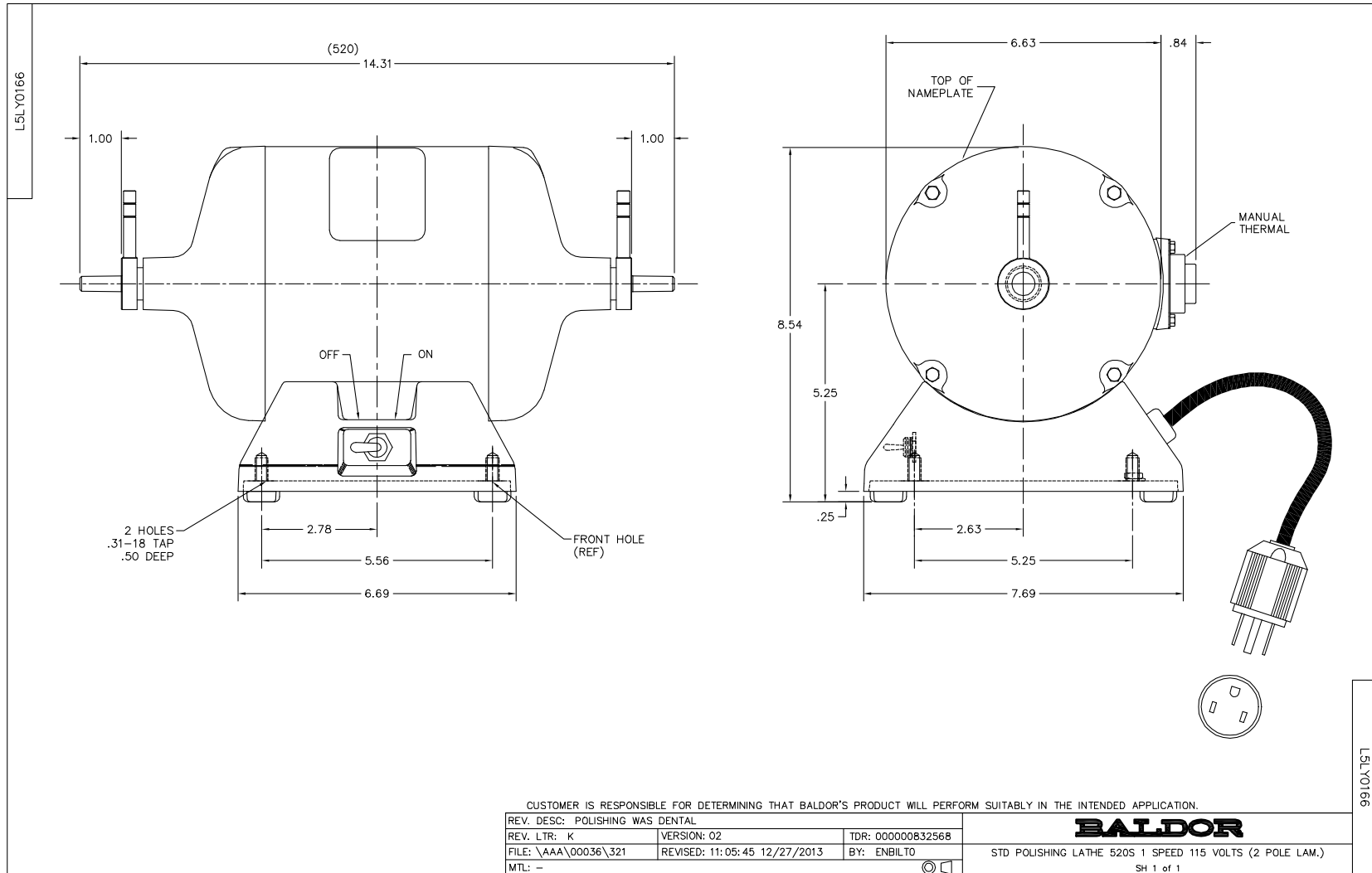
Revision	BA
Type	AC
Mech. spec.	L35-166
Base	
Status	PRD/A
Elec. spec.	L5WG0158
Layout	L5LY0166
Eff. date	12-15-2021
CD Diagram	CD0348
Poles	02
Leads	2#18
Proprietary	False
Created date	08-08-2007

Nameplate

NP3356L			
CAT.NO.	359T		
SPEC.	L35-166-158		
HP	.5		
VOLTS	115		
PHASE	1	AMPS	4.7
CYCLE	60		
RPM	3450		
CL	F		
RATING	40C AMB-CONT		
SERIAL			

Accessories

Part number	Description	Multiplier
R1	DR-3544 R1 RH CHUCK	A8
R2	DR-3546B R2 RH WHEEL CHUCK	A8
R5A	BURR CHUCK-RH	A8
R6	ARBOR BAND CHUCK	A8
L3	DR-3545 LH HD WHEEL CHUCK	A8
L4	DR-3547B L4 LH SF WHEEL CHUCK	A8



CUSTOMER IS RESPONSIBLE FOR DETERMINING THAT BALDOR'S PRODUCT WILL PERFORM SUITABLY IN THE INTENDED APPLICATION.

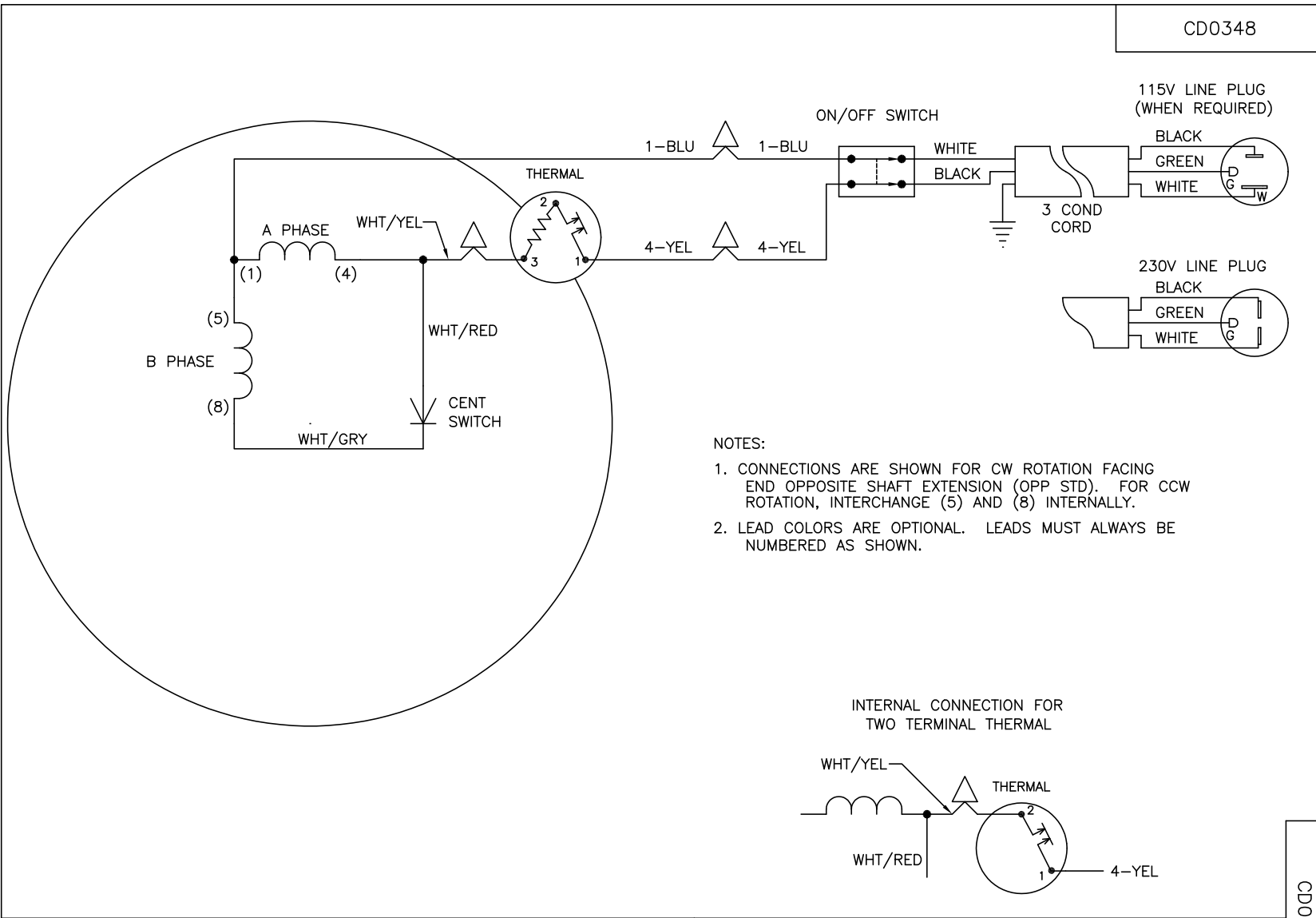
REV. DESC: POLISHING WAS DENTAL		
REV. LTR: K	VERSION: 02	TDR: 000000832568
FILE: \AAA\00036\321	REVISED: 11:05:45 12/27/2013	BY: ENBILTO
MTL: -		

BALDOR

STD POLISHING LATHE 520S 1 SPEED 115 VOLTS (2 POLE LAM.)

SH 1 of 1

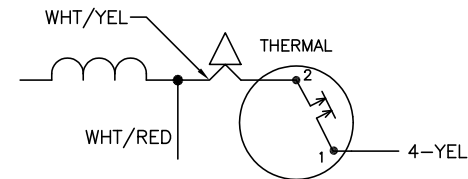
CD0348



NOTES:

1. CONNECTIONS ARE SHOWN FOR CW ROTATION FACING END OPPOSITE SHAFT EXTENSION (OPP STD). FOR CCW ROTATION, INTERCHANGE (5) AND (8) INTERNALLY.
2. LEAD COLORS ARE OPTIONAL. LEADS MUST ALWAYS BE NUMBERED AS SHOWN.

INTERNAL CONNECTION FOR TWO TERMINAL THERMAL



CD0348

REV. DESC: ADD OPTIONAL LEAD COLORS			
REV. LTR: D	BY: JLP	REVISED: 11/15/00 10:43	TDR: 0225139
872000		FILE: AAA00028088	REF: -
		MTL: -	

BALDOR ELECTRIC Co.

TYPE S, SV, FIX, THERMAL, 2 LDS, SW&CD&PLUG (DENTAL LATHE)