

BALDOR • RELIANCE

Customer information packet 353T

.25/.06HP, 3450/1725RPM, 1PH, 60HZ, 3520Q

Specifications

Frequency	60.00 Hz
Nameplate Output	.25/.06
Number of Poles	2
	4
Phase	1
Product Style	DENTAL LATHE
Speed	1725 rpm
	3450 rpm
Voltage	115 V

Part detail

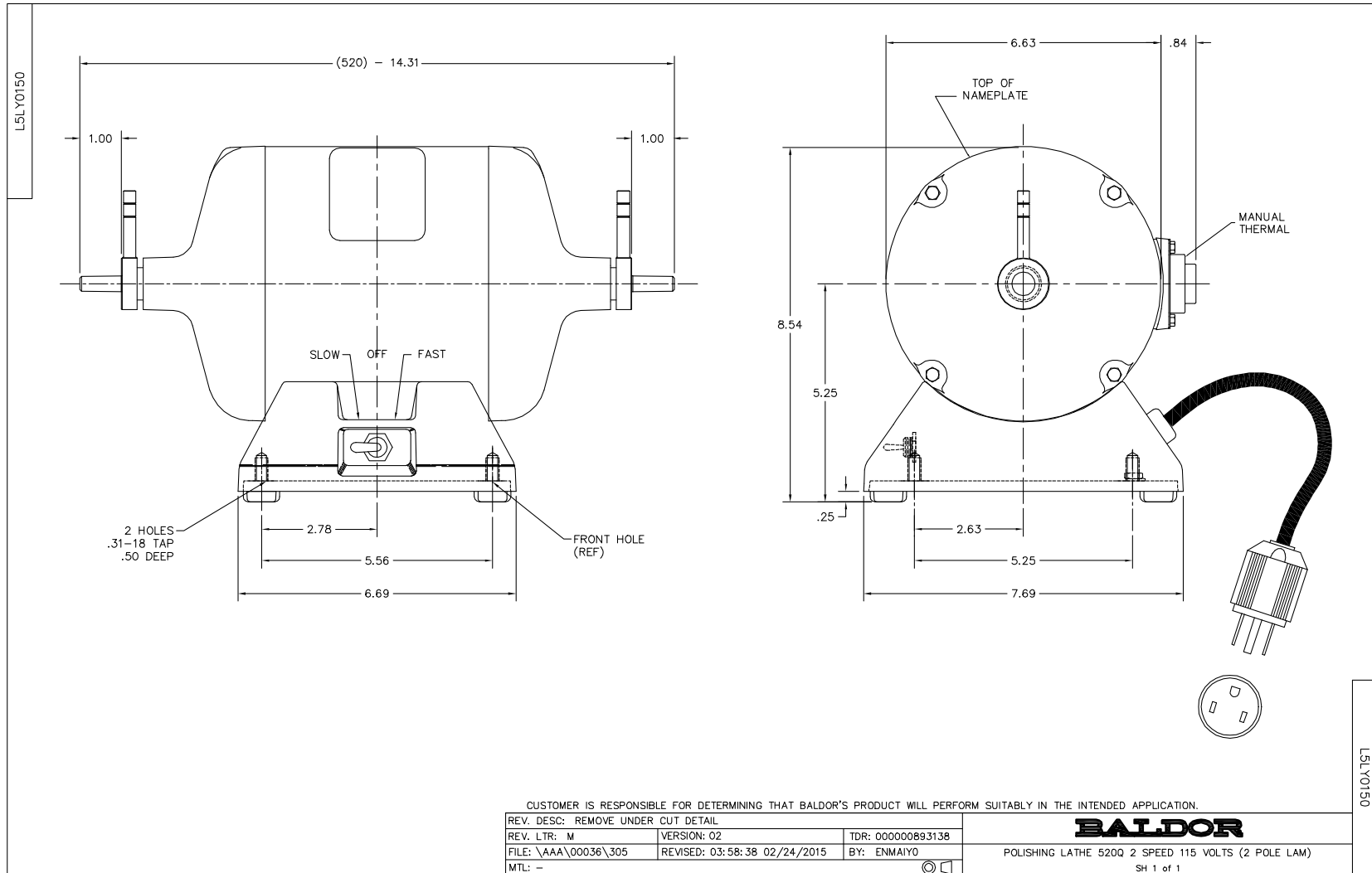
Revision	AZ
Type	AC
Mech. spec.	L35-150
Base	
Status	PRD/A
Elec. spec.	L5WG0156
Layout	L5LY0150
Eff. date	02-18-2022
CD Diagram	CD0364
Poles	02/04
Leads	4#18
Proprietary	False
Created date	01-01-0001

Nameplate

NP3356L			
CAT.NO.	353T		
SPEC.	L35-150-156		
HP	.25/.06		
VOLTS	115		
PHASE	1	AMPS	3/1.5
CYCLE	60		
RPM	3450/1725		
CL	F		
RATING	40C AMB-CONT		
SERIAL			

Accessories

Part number	Description	Multiplier
R1	DR-3544 R1 RH CHUCK	A8
R2	DR-3546B R2 RH WHEEL CHUCK	A8
R5A	BURR CHUCK-RH	A8
R6	ARBOR BAND CHUCK	A8
L3	DR-3545 LH HD WHEEL CHUCK	A8
L4	DR-3547B L4 LH SF WHEEL CHUCK	A8



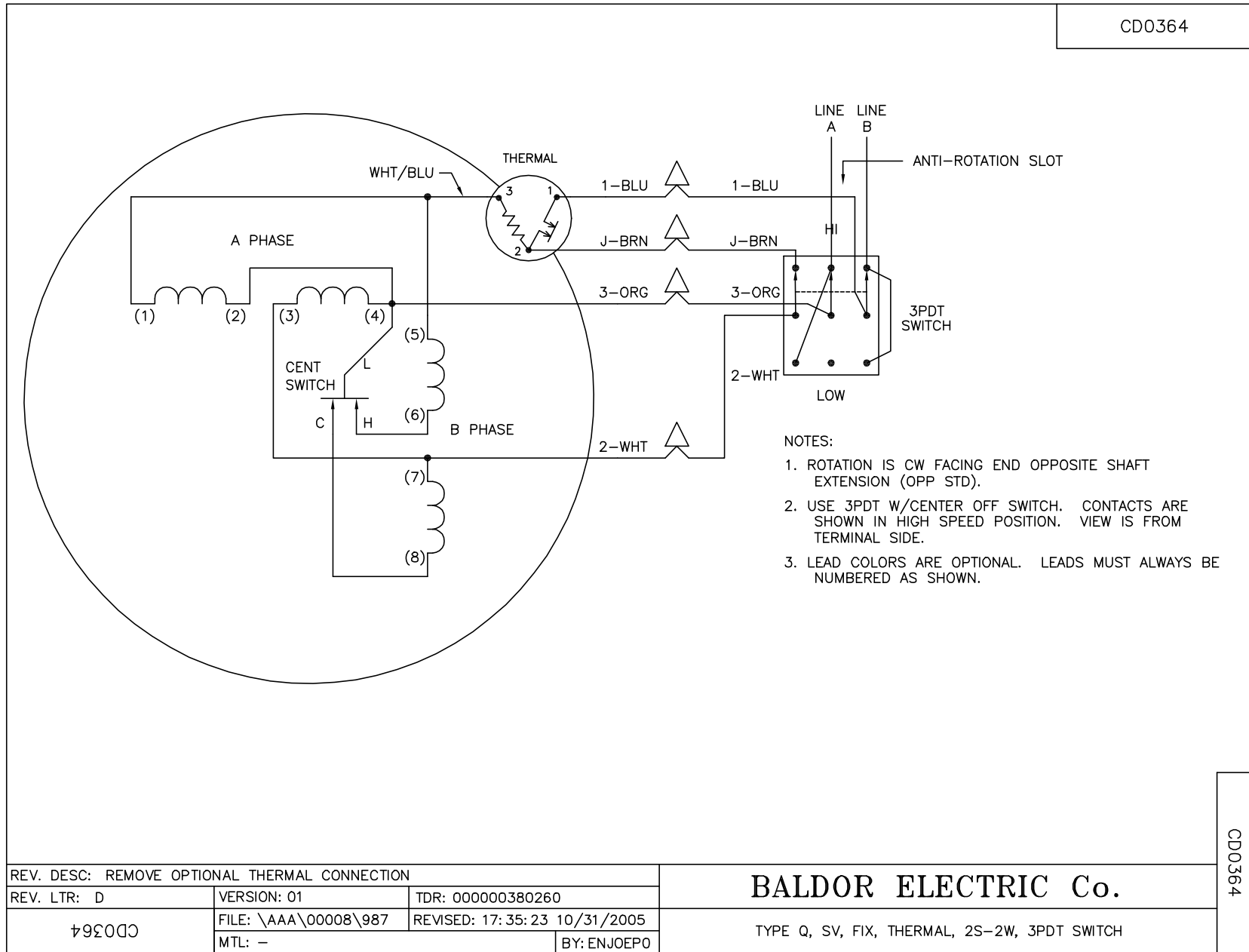
CUSTOMER IS RESPONSIBLE FOR DETERMINING THAT BALDOR'S PRODUCT WILL PERFORM SUITABLY IN THE INTENDED APPLICATION.

REV. DESC: REMOVE UNDER CUT DETAIL	VERSION: 02		TDR: 000000893138
REV. LTR: M	FILE: \AAA\00036\305	REVISED: 03:58:38 02/24/2015	BY: ENMAIYO
MTL: -			

BALDOR

POLISHING LATHE 520Q 2 SPEED 115 VOLTS (2 POLE LAM)
SH 1 of 1

CD0364



REV. DESC: REMOVE OPTIONAL THERMAL CONNECTION		
REV. LTR: D	VERSION: 01	TDR: 000000380260
CD0364	FILE: \AAA\00008\987	REVISED: 17:35:23 10/31/2005
	MTL: -	BY: ENJOEPO

BALDOR ELECTRIC Co.

TYPE Q, SV, FIX, THERMAL, 2S-2W, 3PDT SWITCH

CD0364