

BALDOR • RELIANCE

Customer information packet

34-0000-0132

.75HP, 1725RPM, 1PH, 60HZ, 56, 3418L, OPEN, F1

Class - None

Division - Not Applicable

Specifications

Enclosure	OPEN
Frame	56
Frame Material	Steel
Frequency	60.00 Hz
Haz Area Class and Group	None
Haz Area Division	Not Applicable
Motor Letter Type	Cap Start, Induction Run
Output @ Frequency	.750 HP @ 60 HZ
Phase	1
Synchronous Speed @ Frequency	1800 RPM @ 60 HZ
Voltage @ Frequency	115.0 V @ 60 HZ
Agency Approvals	CSA UR
Ambient Temperature	40 °C
Auxillary Box	No Auxillary Box
Auxillary Box Lead Termination	None
Base Indicator	Rigid
Bearing Grease Type	Polyrex EM (-20F +300F)
Blower	None
Current @ Voltage	10.200 A @ 115.0 V
Design Code	N
Drip Cover	No Drip Cover
Duty Rating	CONT
Efficiency @ 100% Load	61.0 %
Electrically Isolated Bearing	Not Electrically Isolated
Feedback Device	NO FEEDBACK
Heater Indicator	No Heater
High Voltage Full Load Amps	10.2 a
Insulation Class	B
Inverter Code	Not Inverter
IP Rating	NONE
KVA Code	F

Part detail

Revision	H
Type	AC
Mech. spec.	
Base	
Status	PRD/A
Elec. spec.	34WGR664
Layout	34LY-000-051
Eff. date	02-08-2024
CD Diagram	CD0088
Poles	04
Leads	3#14
Proprietary	False
Created date	09-09-2019

Lifting Lugs	No Lifting Lugs
Locked Bearing Indicator	No Locked Bearing
Motor Lead Termination	Cord
Motor Standards	NEMA
Motor Type	3418L
Mounting Arrangement	F1
Number of Poles	4
Overall Length	10.88 IN
Power Factor	74
Product Family	General Purpose
Pulley Face Code	Standard
Rodent Screen	None
Service Factor	1.00
Shaft Diameter	0.625 IN
Shaft Ground Indicator	No Shaft Grounding
Shaft Rotation	Reversible
Speed	1725 rpm
Speed Code	Single Speed
Starting Method	Direct on line
Thermal Device - Bearing	None
Thermal Device - Winding	None
Vibration Sensor Indicator	No Vibration Sensor
Winding Thermal 1	None
Winding Thermal 2	None

Nameplate**NP1256L**

CAT.NO.										
SPEC.	34-0000-0132									
HP	.75									
VOLTS	115									
AMP	10.2									
RPM	1725									
FRAME	56		HZ	60		PH	1			
SER.F.	1.00	CODE	F	DES	N	CLASS	B			
NEMA-NOM-EFF	61	PF	74							
RATING	40C AMB-15 MIN									
CC										
DE	6205	ODE	6203							
ENCL	OPEN	SN								

AC Induction Motor Performance Data

Record # 77621

Typical performance - not guaranteed values

Winding: 34WGR664-R001		Type: 3418L	Enclosure: OPEN			
Nameplate Data			115 V, 60 Hz: Single Voltage Motor			
Rated Output (HP)	.75	Full Load Torque	2.29 LB-FT			
Volts	115	Start Configuration	direct on line			
Full Load Amps	10.2	Breakdown Torque	4.23 LB-FT			
R.P.M.	1725	Pull-up Torque	4.49 LB-FT			
Hz	60 Phase	1	Locked-rotor Torque	6.02 LB-FT		
NEMA Design Code	N	KVA Code	F	Starting Current	37.1 A	
Service Factor (S.F.)			1	No-load Current	7.74 A	
NEMA Nom. Eff.	61	Power Factor	74	Line-line Res. @ 25°C	1.23 Ω A Ph 1.23 Ω B Ph	
Rating - Duty	40C AMB-15 MIN		Temp. Rise @ Rated Load			
			Locked-rotor Power Factor			99.6
			Rotor inertia			0.0428 LB-FT ²

Load Characteristics 115 V, 60 Hz, 0.75 HP

% of Rated Load	25	50	75	100	125	150
Power Factor	38	52	62	69	75	77
Efficiency	40.5	55.4	61.8	63.1	61.1	56.6
Speed	1775	1753	1730	1698	1662	1602
Line amperes	7.92	8.51	9.52	11	12.9	16.2

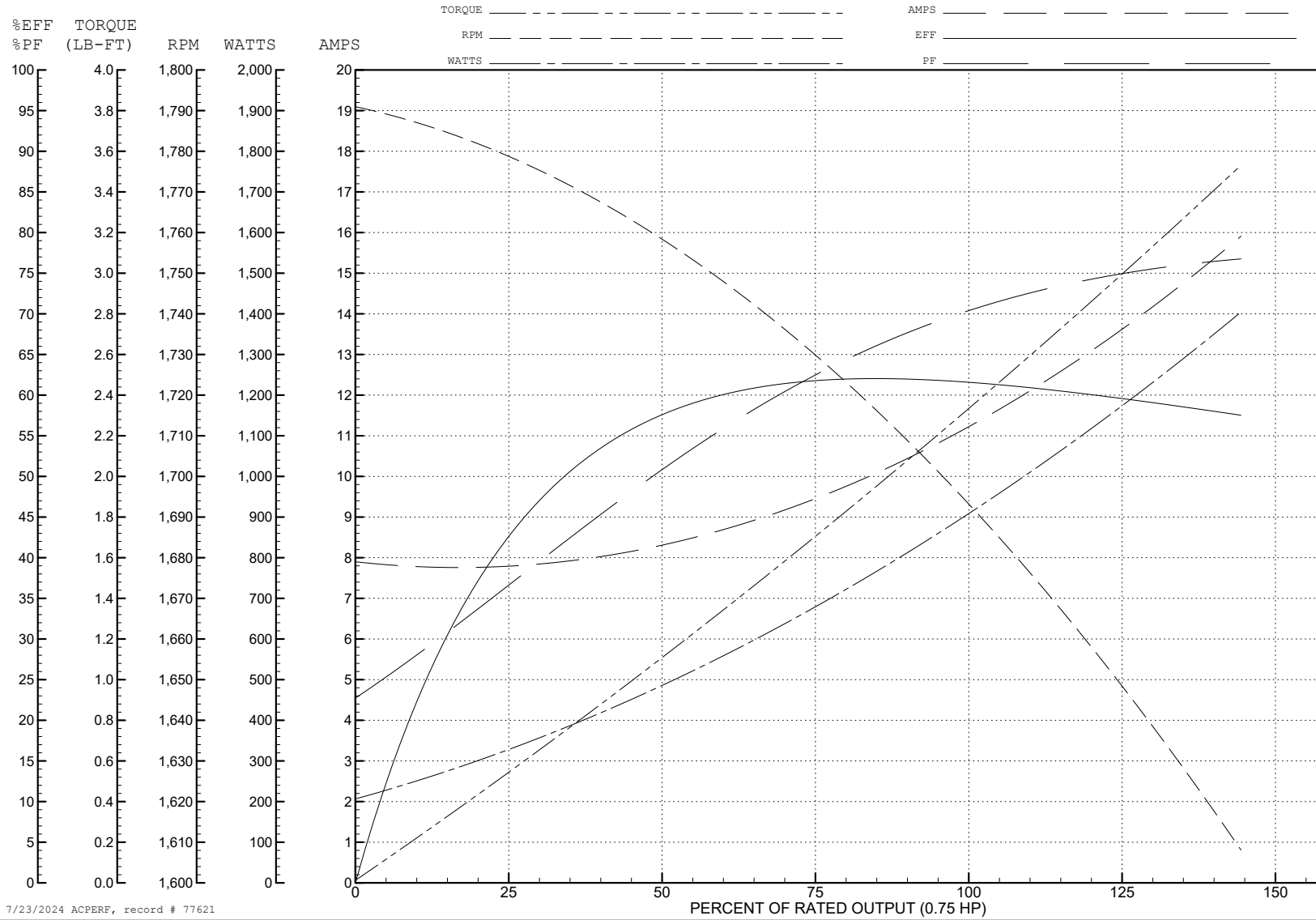
ABB Motors and Mechanical Inc.

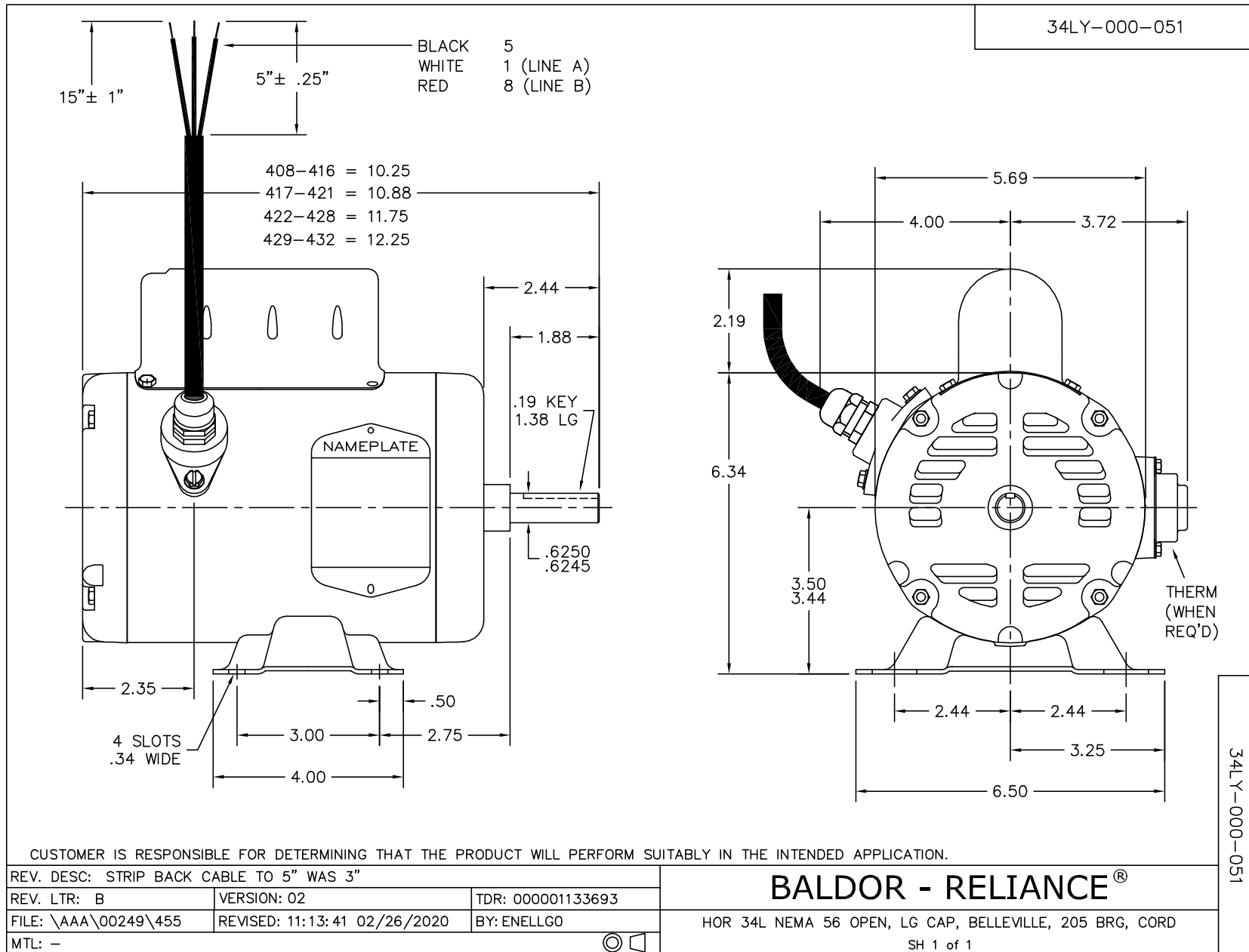
WINDING # 34WGR664

Typical performance - not guaranteed values.

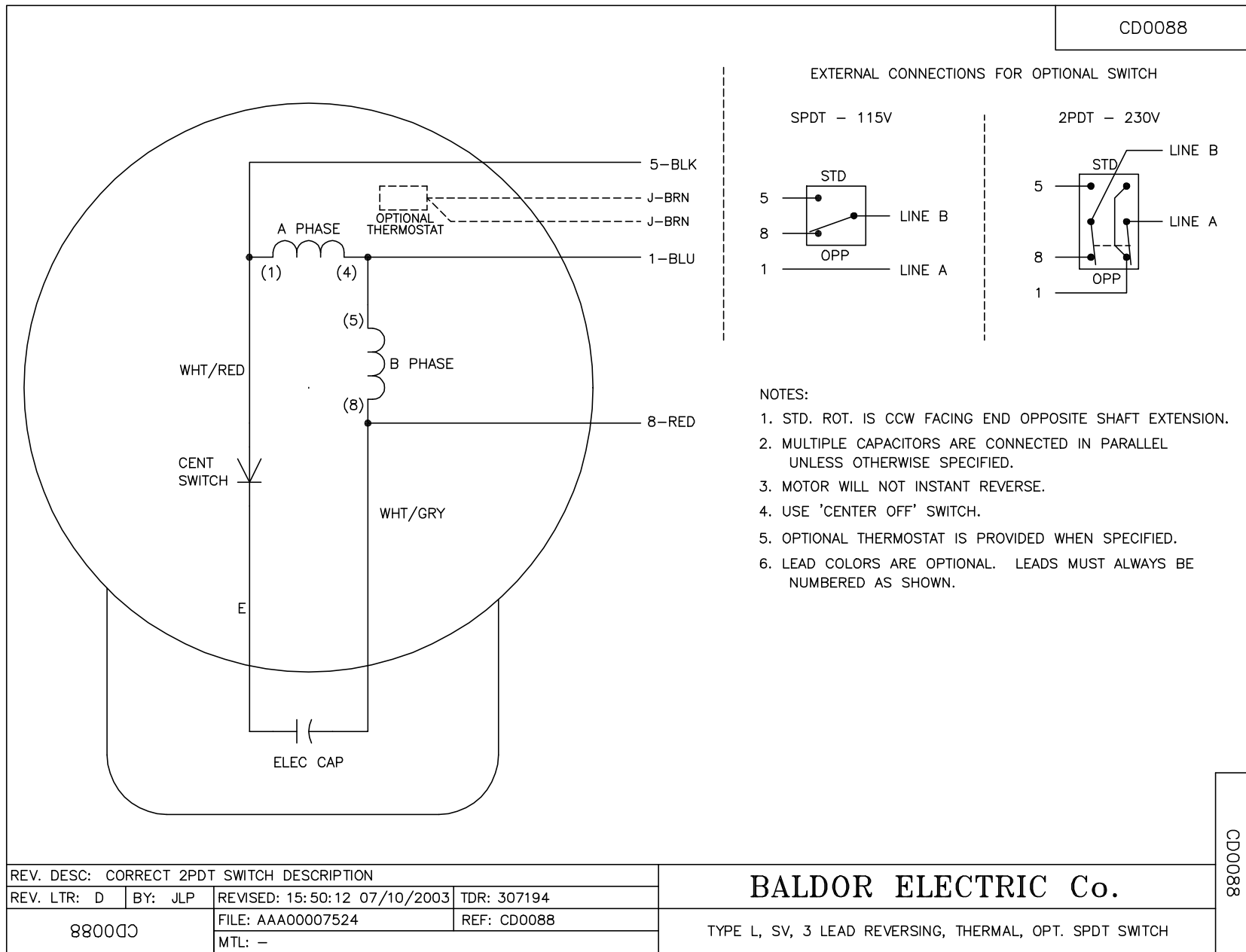
0.75 HP 1 PH 60 HZ 1725 RPM 115 V 3418L

TORQUES (LB-FT): PO=4.23 PU=4.49 LR=6.02 LRA=37.1



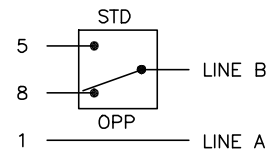


CD0088

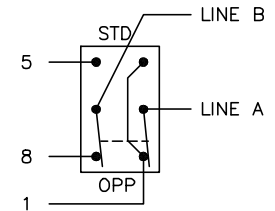


EXTERNAL CONNECTIONS FOR OPTIONAL SWITCH

SPDT - 115V



2PDT - 230V



NOTES:

1. STD. ROT. IS CCW FACING END OPPOSITE SHAFT EXTENSION.
2. MULTIPLE CAPACITORS ARE CONNECTED IN PARALLEL UNLESS OTHERWISE SPECIFIED.
3. MOTOR WILL NOT INSTANT REVERSE.
4. USE 'CENTER OFF' SWITCH.
5. OPTIONAL THERMOSTAT IS PROVIDED WHEN SPECIFIED.
6. LEAD COLORS ARE OPTIONAL. LEADS MUST ALWAYS BE NUMBERED AS SHOWN.

REV. DESC: CORRECT 2PDT SWITCH DESCRIPTION			
REV. LTR: D	BY: JLP	REVISED: 15:50:12 07/10/2003	TDR: 307194
880000		FILE: AAA00007524	REF: CD0088
		MTL: -	

BALDOR ELECTRIC Co.

TYPE L, SV, 3 LEAD REVERSING, THERMAL, OPT. SPDT SWITCH

CD0088