

BALDOR® • RELIANCE™

Customer information packet 332B

24C 4P BUFFER

Specifications

Enclosure	TENV
Frame Material	Steel
Frequency	60.00 Hz 60.00 Hz
Motor Letter Type	Oil Capacitor Start and Run
Nameplate Output	.75
Number of Poles	4 4
Output @ Frequency	.750 HP @ 60 HZ
Phase	1 1
Product Style	BUFFER
Shaft Diameter	0.750 IN 0.750 IN
Speed	1800 rpm 1800 rpm
Synchronous Speed @ Frequency	1800 RPM @ 60 HZ
Voltage	115 V 230 V
Voltage @ Frequency	230.0 V @ 60 HZ 115.0 V @ 60 HZ
Agency Approvals	UR
Ambient Temperature	40 °C
Base Indicator	Rigid
Bearing Grease Type	Polyrex EM (-20F +300F)
Current @ Voltage	2.300 A @ 230.0 V 4.600 A @ 115.0 V
Design Code	-
Duty Rating	CONT
Feedback Device	NO FEEDBACK
Insulation Class	B
KVA Code	-

Part detail

Revision	BH
Type	AC
Mech. spec.	G8-169
Base	
Status	PRD/A
Elec. spec.	G8WG0060
Layout	G8LY0169
Eff. date	06-01-2026
CD Diagram	CD0279
Poles	04
Leads	4#18
Proprietary	False
Created date	01-01-0001

Motor Lead Quantity/Wire Size	4 @ 18 AWG
Motor Standards	Other
Motor Type	3524C
Mounting Arrangement	F1
Overall Length	28.37 IN
Product Family	Buffer
Service Factor	1.00
Shaft Extension Location	Double Shaft
Shaft Rotation	Fixed Opposite Standard
Shaft Slinger Indicator	No Slinger
Speed Code	Single Speed
Starting Method	Direct on line
Thermal Device - Winding	None
Winding Thermal 1	None
Winding Thermal 2	None

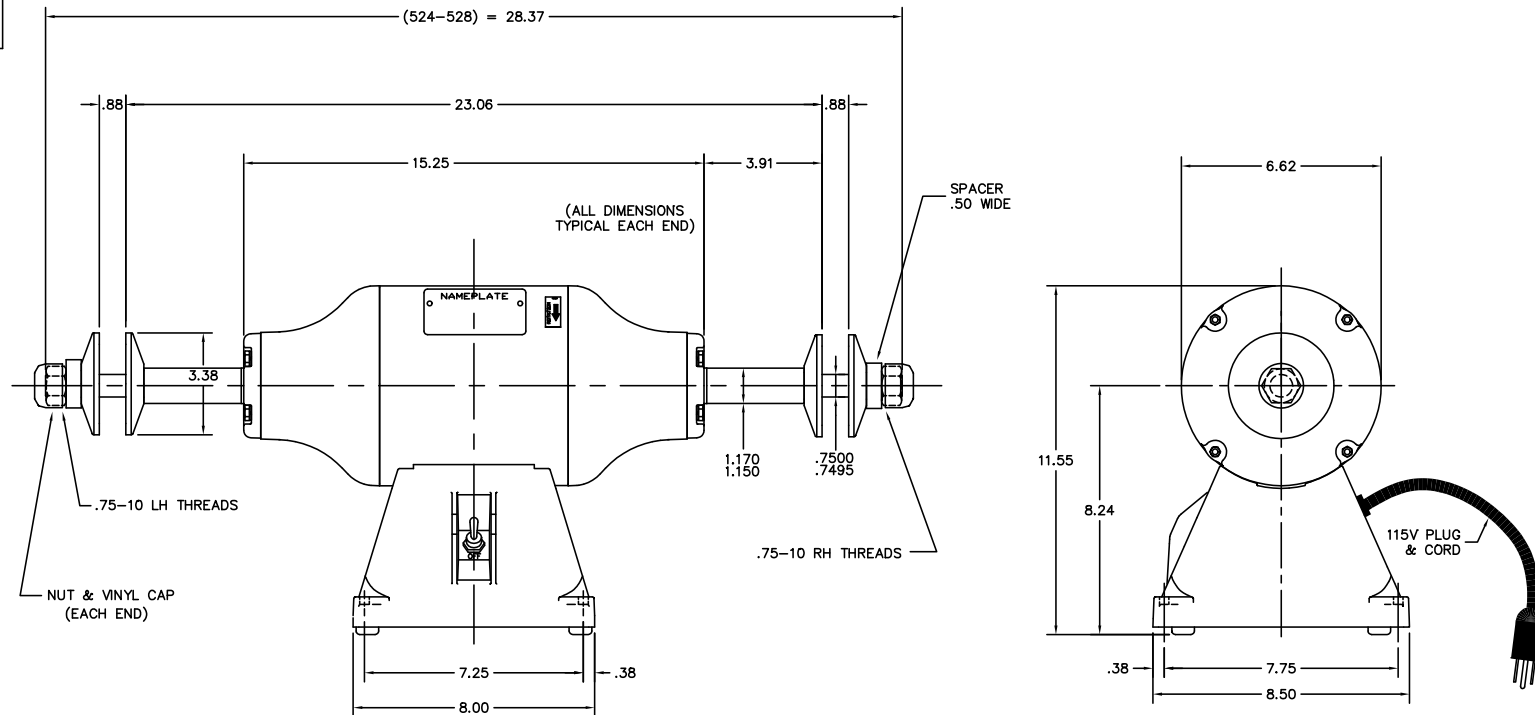
Nameplate

NP3352L			
CAT.NO.	332B		
HP	.75	VOLTS	115/230
PHASE	1	AMPS	7.3/3.65
HZ	60	RPM	1800
SER.NO			
SPEC.	G8-169-60		
BLANK			

Accessories

Part number	Description	Multiplier
GA16	PEDESTAL INDUSTRIAL, CAST IRON 6" - 10"	A8
GA14	PEDESTAL FABRICATED STEEL W/SHELVES	A8
GA20	PEDESTAL INDUSTRIAL, CAST IRON 8"-14"	A8
GA20E	PEDESTAL LIGHT INDUSTRIAL,STEEL	A8
A82	8" COTTON BUFFING WHEEL 3/4 " BORE	A8
BQ1-015-CC	1PH Brake, NEMA 1,110-125 VAC, 50/60Hz	
BQ1-015-CP	1PH Brake, Panel 110-125 VAC, 50/60 Hz	

G8-0169



G8-0169

CUST. NAME				CUST. P.O.		REMARKS:		
MODEL	INSUL	AMB	H.P.	MTG	REV: F UPDATE & LOAD TO ACAD, IDL TO EM21			
R.P.M.	VOLTS	ENCL	PHASE	FREQ	SCALE: .3	BY: OD	REVISED: 11/14/96	
FRAME	TYPE	CERTIFIED BY		FILE: AAA00035983	TDR: 0103074			

BALDOR ELECTRIC Co.

STD 8" BUFFER (524C)

