

ABB BALDOR RELIANCE III

Customer information packet 248-181TD

1.5HP, 3600RPM, 1PH, 60HZ, 3535LC, 3535LC

Specifications

Enclosure	TENV
Frame Material	Steel
Frequency	60.00 Hz 60.00 Hz
Motor Letter Type	Cap Start, Cap Run
Nameplate Output	1.5
Number of Poles	2 2
Output @ Frequency	1.500 HP @ 60 HZ
Phase	1 1
Product Style	PIVOT BELT SANDER
Speed	3600 rpm 3600 rpm
Synchronous Speed @ Frequency	3600 RPM @ 60 HZ
Voltage	115 V 230 V
Voltage @ Frequency	230.0 V @ 60 HZ 115.0 V @ 60 HZ
Agency Approvals	UR
Ambient Temperature	40 °C
Base Indicator	Rigid
Current @ Voltage	7.500 A @ 230.0 V 15.000 A @ 115.0 V
Design Code	L
Duty Rating	CONT
Feedback Device	NO FEEDBACK
Insulation Class	B
KVA Code	-
Motor Lead Quantity/Wire Size	4 @ 16 AWG, A PH
Motor Standards	Other
Motor Type	3535LC

Part Detail

Revision	AQ
Type	AC
Mech. spec.	B2-6
Base	
Status	PRD/A
Elec. spec.	G8WG0350
Layout	B2LY0006
Eff. date	03-03-2025
CD Diagram	CD0728
Poles	02
Leads	4#16 A PH,1#18 B PH
Proprietary	False
Created date	01-01-0001

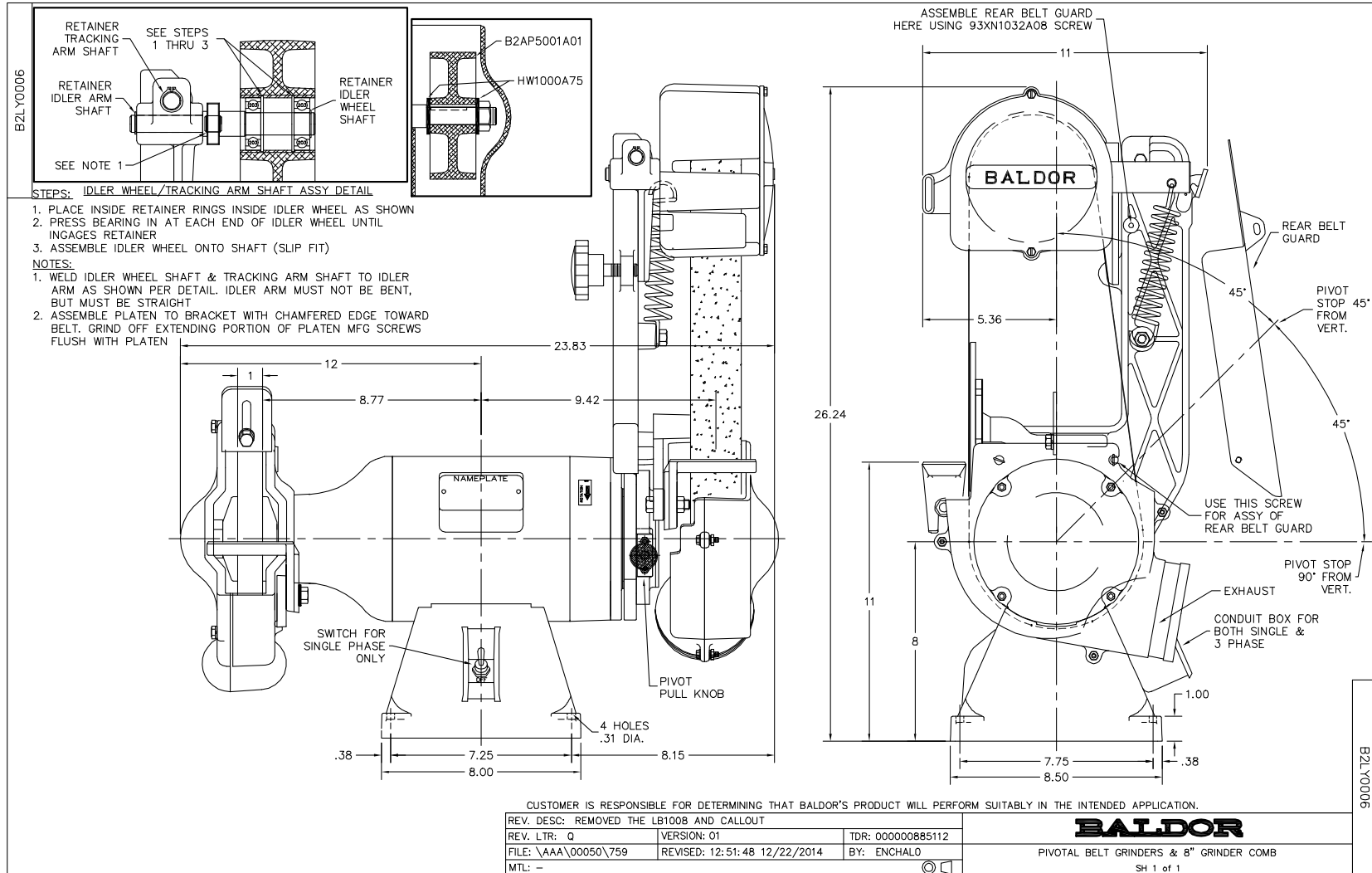
Mounting Arrangement	F1
Overall Length	23.83 IN
Product Family	Pivot Belt Sander
Service Factor	1.00
Shaft Extension Location	Pulley End
Shaft Rotation	Fixed Opposite Standard
Shaft Slinger Indicator	No Slinger
Speed Code	Single Speed
Starting Method	Direct on line
Thermal Device - Winding	None
Winding Thermal 1	None
Winding Thermal 2	None

Nameplate

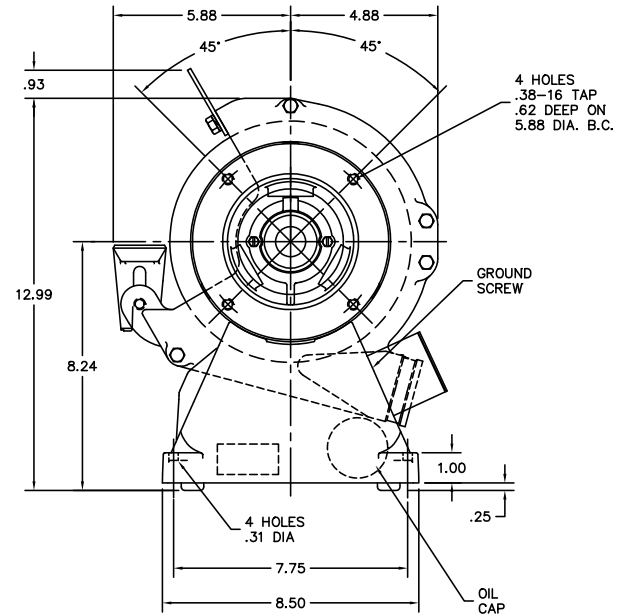
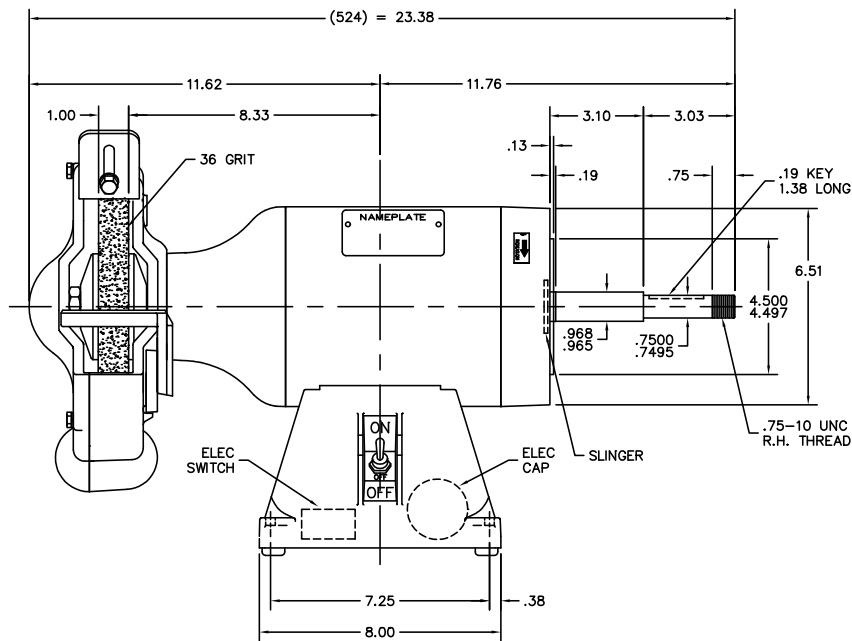
NP3361L			
CAT.NO.	248-181TD		
HP	1.5	VOLTS	115/230
PHASE	1	AMPS	15/7.5
HZ	60	RPM	3600
SER.NO			
SPEC.	B2-6D		
BLANK			

Accessories

Part number	Description	Multiplier
GA16	PEDESTAL INDUSTRIAL, CAST IRON 6" - 10"	A8
GA14	PEDESTAL FABRICATED STEEL W/SHELVES	A8
GA20	PEDESTAL INDUSTRIAL, CAST IRON 8"-14"	A8
GA20E	PEDESTAL LIGHT INDUSTRIAL,STEEL	A8
AB248	2' X 48" 80 GRIT GRINDER BELT	A8
BQ1-015-CC	1PH Brake, NEMA 1,110-125 VAC, 50/60Hz	P1
BQ1-015-CP	1PH Brake, Panel 110-125 VAC, 50/60 Hz	
BQ2-015-CC	1PH Brake,NEMA 1 208-230 VAC,50/60Hz	
BQ2-015-CP	1PH Brake, Panel 208-230 VAC, 50/60 Hz	



GBLY0351



CUSTOMER IS RESPONSIBLE FOR DETERMINING THAT MOTOR PERFORMANCE IS SUITABLE IN THE APPLICATION.

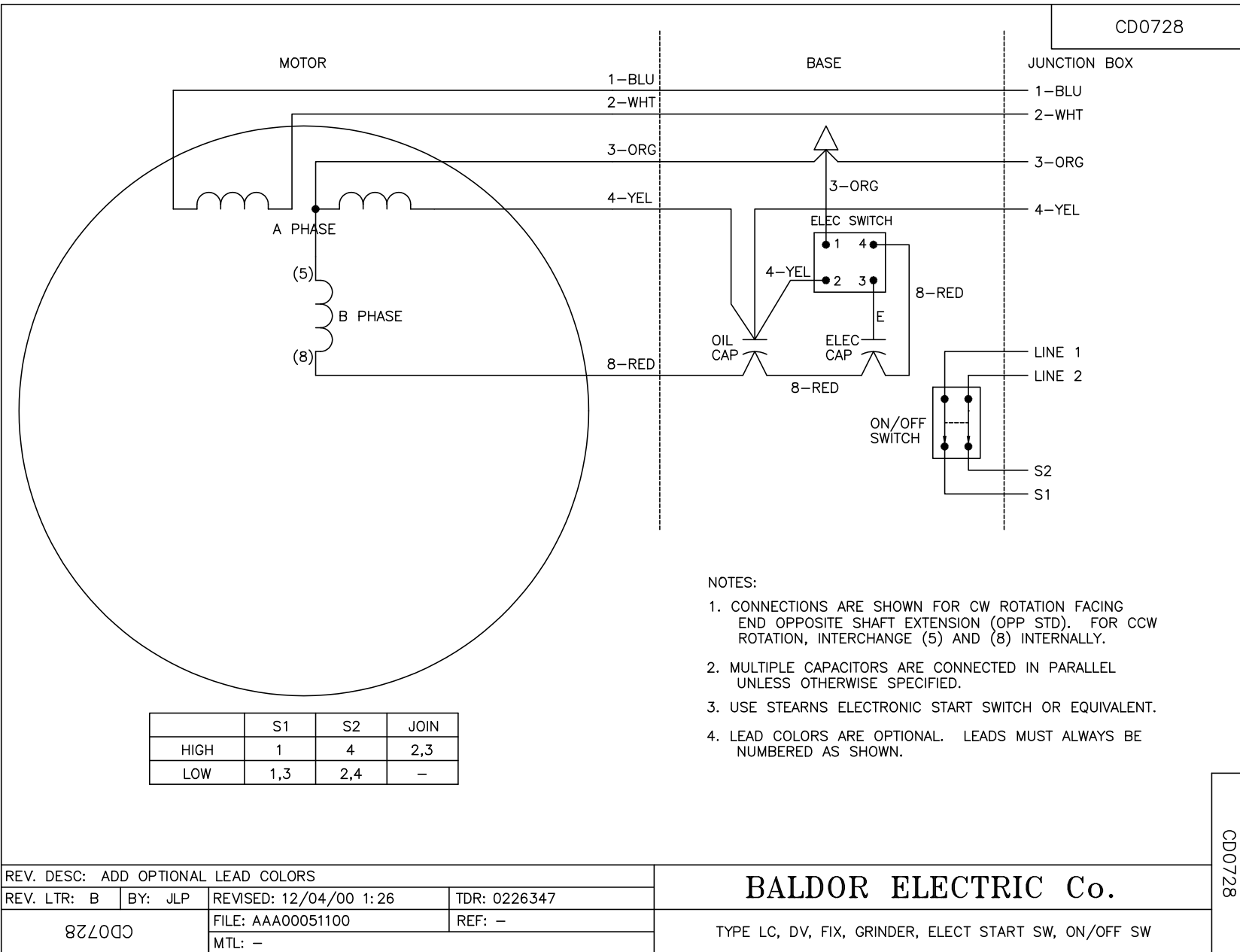
REV. DESC:	OMITTED FELT WSHR HA1025A03 & CHG'D TO SEALED BRGS
REV. LTR:	F BY: SSS REVISED: 10/02/00 1:27 TDR: 0212666
FILE:	AAA00066705 REF: -
MTL:	-

BALDOR ELECTRIC Co.

8" GRINDER 35LC FOR B2-6 PIVOTAL BELT GRINDER

GBLY0351

CD0728



NOTES:

1. CONNECTIONS ARE SHOWN FOR CW ROTATION FACING END OPPOSITE SHAFT EXTENSION (OPP STD). FOR CCW ROTATION, INTERCHANGE (5) AND (8) INTERNALLY.
2. MULTIPLE CAPACITORS ARE CONNECTED IN PARALLEL UNLESS OTHERWISE SPECIFIED.
3. USE STEARNS ELECTRONIC START SWITCH OR EQUIVALENT.
4. LEAD COLORS ARE OPTIONAL. LEADS MUST ALWAYS BE NUMBERED AS SHOWN.

CD0728

REV. DESC: ADD OPTIONAL LEAD COLORS			
REV. LTR: B	BY: JLP	REVISED: 12/04/00 1:26	TDR: 0226347
8Z7000		FILE: AAA00051100	REF: -
		MTL: -	

BALDOR ELECTRIC Co.

TYPE LC, DV, FIX, GRINDER, ELECT START SW, ON/OFF SW