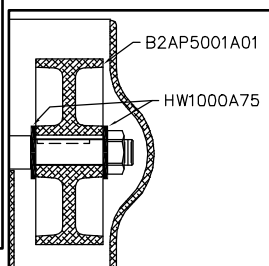
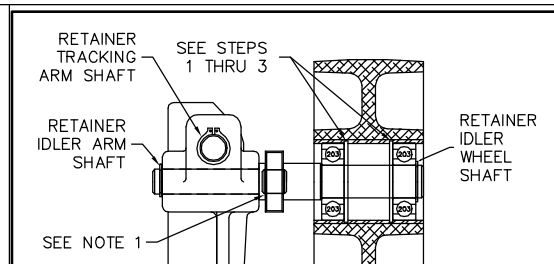


B2LY0006

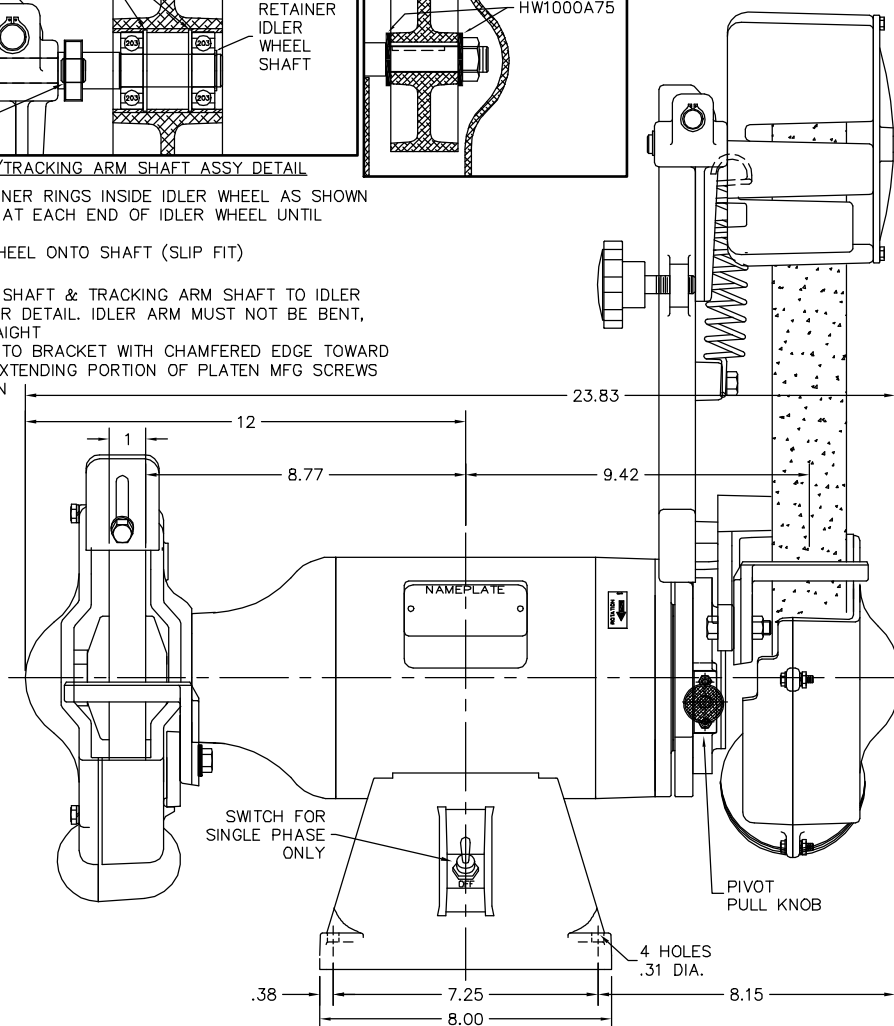


STEPS: IDLER WHEEL/TRACKING ARM SHAFT ASSY DETAIL

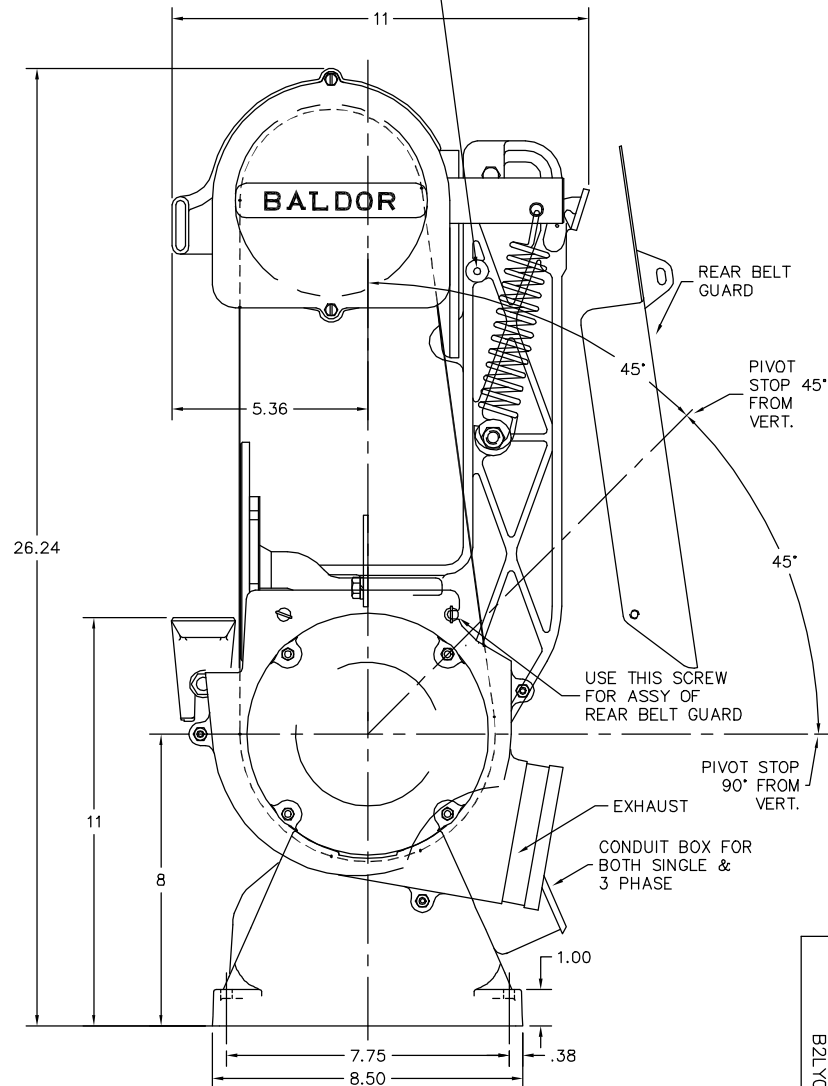
1. PLACE INSIDE RETAINER RINGS INSIDE IDLER WHEEL AS SHOWN
2. PRESS BEARING IN AT EACH END OF IDLER WHEEL UNTIL IT ENGAGES RETAINER
3. ASSEMBLE IDLER WHEEL ONTO SHAFT (SLIP FIT)

NOTES:

1. WELD IDLER WHEEL SHAFT & TRACKING ARM SHAFT TO IDLER ARM AS SHOWN PER DETAIL. IDLER ARM MUST NOT BE BENT, BUT MUST BE STRAIGHT
2. ASSEMBLE PLATEN TO BRACKET WITH CHAMFERED EDGE TOWARD BELT. GRIND OFF EXTENDING PORTION OF PLATEN MFG SCREWS FLUSH WITH PLATEN



ASSEMBLE REAR BELT GUARD
HERE USING 93XN1032A08 SCREW



CUSTOMER IS RESPONSIBLE FOR DETERMINING THAT BALDOR'S PRODUCT WILL PERFORM SUITABLY IN THE INTENDED APPLICATION.

REV. DESC: REMOVED THE LB1008 AND CALLOUT		
REV. LTR: Q	VERSION: 01	TDR: 00000885112
FILE: \AAA\00050\759	REVISED: 12:51:48 12/22/2014	BY: ENCHALO
MTL: -		

BALDOR

PIVOTAL BELT GRINDERS & 8" GRINDER COMB

SH 1 of 1

B2LY0006