

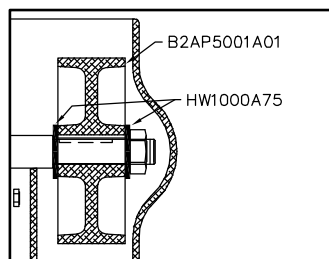
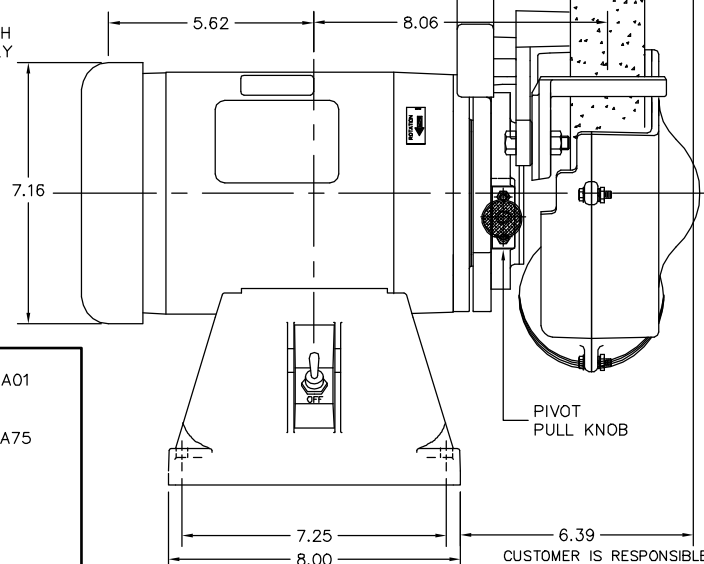
IDLER WHEEL/TRACKING ARM SHAFT ASSY DETAIL

STEPS:

1. PLACE INSIDE RETAINER RINGS INSIDE IDLER WHEEL AS SHOWN
2. PRESS BEARING IN AT EACH END OF IDLER WHEEL UNTIL IT ENGAGES RETAINER
3. ASSEMBLE IDLER WHEEL ONTO SHAFT (SLIP FIT)

NOTES:

1. WELD IDLER WHEEL SHAFT & TRACKING ARM SHAFT TO IDLER ARM AS SHOWN PER DETAIL. IDLER ARM MUST NOT BE BENT, BUT MUST BE STRAIGHT
2. ASSEMBLE PLATEN TO BRACKET WITH CHAMFERED EDGE TOWARD BELT. GRIND OFF EXTENDING PORTION OF PLATEN MFG SCREWS FLUSH WITH PLATEN
3. CORD, PLUG AND SWITCH FOR SINGLE PHASE ONLY



CUSTOMER IS RESPONSIBLE FOR DETERMINING THAT THE PRODUCT WILL PERFORM SUITABLY IN THE INTENDED APPLICATION.

REV. DESC: REMOVE RUBBER FEET

REV. LTR: R

VERSION: 02

TDR: 000001183183

FILE: \AAA\00050\587

REVISED: 01:30:13 12/17/2021

BY: USANEAT

MTL: -

BALDOR - RELIANCE®

PIVOTAL BELT GRINDER 35 L & M FRAMES

SH 1 of 1

