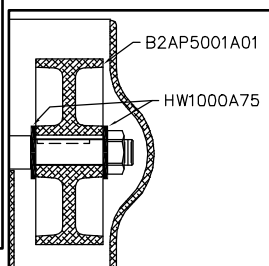
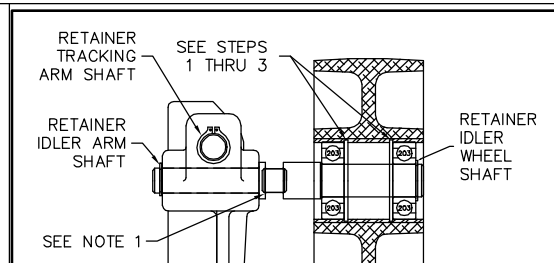


B2LY0008

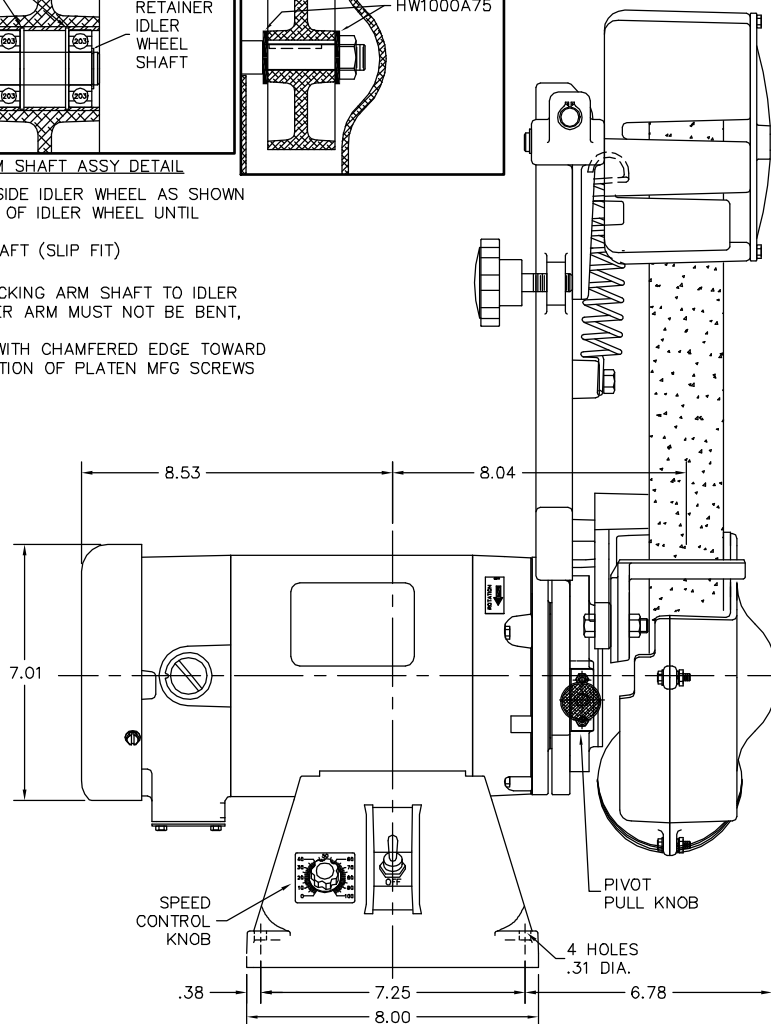


STEPS: IDLER WHEEL/TRACKING ARM SHAFT ASSY DETAIL

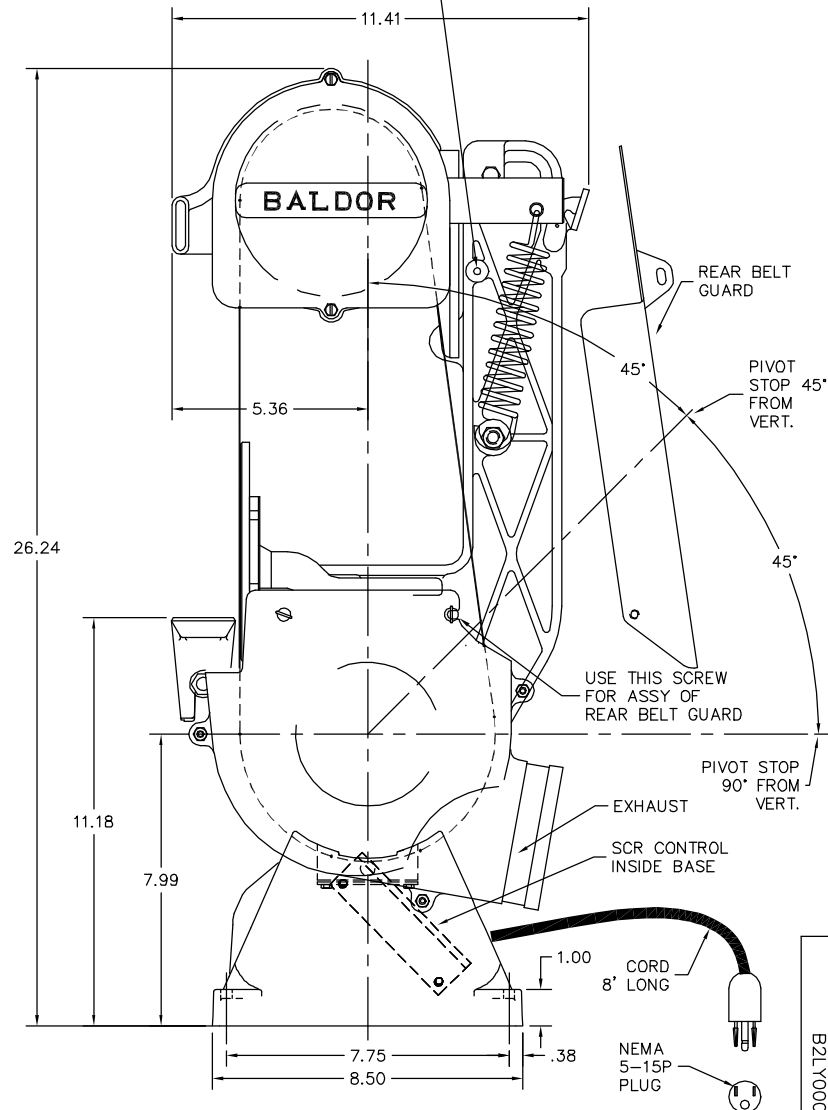
1. PLACE INSIDE RETAINER RINGS INSIDE IDLER WHEEL AS SHOWN
2. PRESS BEARING IN AT EACH END OF IDLER WHEEL UNTIL ENGAGES RETAINER
3. ASSEMBLE IDLER WHEEL ONTO SHAFT (SLIP FIT)

NOTES:

1. WELD IDLER WHEEL SHAFT & TRACKING ARM SHAFT TO IDLER ARM AS SHOWN PER DETAIL. IDLER ARM MUST NOT BE BENT, BUT MUST BE STRAIGHT
2. ASSEMBLE PLATEN TO BRACKET WITH CHAMFERED EDGE TOWARD BELT. GRIND OFF EXTENDING PORTION OF PLATEN MFG SCREWS FLUSH WITH PLATEN



ASSEMBLE REAR BELT GUARD
HERE USING 93XN1032A08 SCREW



CUSTOMER IS RESPONSIBLE FOR DETERMINING THAT THE PRODUCT WILL PERFORM SUITABLY IN THE INTENDED APPLICATION.

REV. DESC: REMOVE RUBBER FEET		
REV. LTR: P	VERSION: 02	TDR: 000001183183
FILE: \AAA\00050\691	REVISED: 01:32:03 12/17/2021	BY: USANEAT
MTL: -		

BALDOR - RELIANCE®

PIVOTAL BELT GRINDER 35PM FRAME

SH 1 of 1

B2LY0008