



# NEMA MOTORS

Motor Nameplate Drawing/  
Placa de Datos del Motor



**TYPE / TIPO:** SD200 841  
**PHASE / FASES:** 3

TYPE: SD200 841			PART Nr: 1LE63224DD113AA1		L449T	IP 56	3PH	TEFC	B	
BEARINGS			Serial Nr: Q2				CONTINUOUS DUTY			
D.E. 100BC03JP3		INSUL. CLASS.: H			kVA CODE: H		WEIGHT: 2577 lbs			
O.D.E. 75BC03JP3		AMB. TEMP: 40 °C			T. RISE: AMB. TEMP: 80°C @ S		EFFICIENCY			
HP	kW	R.P.M	V	A	Hz	S.F.	S.F.A	NOM%	MIN%	
200	149.2	885	575	209	60	1.15	240	94.5	94.1	

VFD COMPATIBLE  
AT 1.0 S.F. 20:1 V.T., 2:1 C.T.  
IEEE Std 841-2021/45  
GREASE: POLYUREA BASE

## CONNECTION



LINE

Class I Div. 2 GR A, B, C or D T3  
Class I Zone 2 GR IIA, IIB or IIC T3  
Class II Div. 2 GR F OR G T3C

Made in México by ABB NEMA MOTORS

\*\*Actual nameplate will include certification marks for ex: UR, DOE, CE, CSA, NEMA PREMIUM, etc.

\*\*La placa de datos del motor incluye logos de certificación, por ejemplo: UR, DOE, CE, CSA, NEMA PREMIUM, etc.

<b>Calc:</b> 3G44981390_AA/03	<b>JN:</b> J44-0000-0649	<b>Date/Fecha</b> 31/10/2024
-------------------------------	--------------------------	------------------------------



Description / Descripción	MLFB	Type / Tipo	Hp	Poles / Polos	Frame / Armazón	Volts	Hz
Electric Motor	1LE63224DD113AA1	SD200 841	200	8	L449T	575	60

The product described below is certified to comply to have been designed, manufactured and tested with the requirements of the Customer Purchase Order.

The above product was manufactured by ABB NEMA Motors factory in Guadalajara Mexico, under a ISO 9001:2015 Quality System certified by GlobalSTD.

Certification No. GSC9KMX1155.

ABB NEMA Motors guarantees this product to be of the kind and quality described on the Purchase Order, and free of defects in workmanship and materials.

El producto descrito a continuación está certificado para cumplir con el diseño, la manufactura y las pruebas de acuerdo con los requisitos de la orden de compra del cliente.

El producto anterior fue fabricado en la fábrica de ABB NEMA Motors en Guadalajara México, bajo un Sistema de Calidad ISO 9001:2015 certificado por GlobalSTD.

Número de Certificación. GSC9KMX1155.

ABB NEMA Motors garantiza que este producto es de la clase y calidad descrita en la Orden de Compra, y que se encuentra libre de defectos de fabricación y materiales.

<b>Calc:</b>	3G44981390_AA/03	<b>JN:</b>	J44-0000-0649	<b>Date/Fecha</b>	<b>31/10/2024</b>
--------------	------------------	------------	---------------	-------------------	-------------------



# NEMA MOTORS

## Electrical Motor Datasheet / Hoja de datos del Motor Eléctrico



### Data sheet for three-phase Squirrel-Cage-Motors / Hoja de datos de Motores Trifásicos Jaula de Ardilla

MLFB: 1LE63224DD113AA1

Date / Fecha: 31/10/2024

Short Codes / Opciones:

Material No.: J44-0000-0649

Motor type / Tipo de Motor: SD200 841

Remarks / Revisión: AA

Project / Proyecto:

Author / Autor:

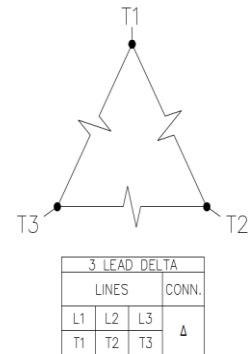
CoCCM

U [V]	$\Delta / Y$	f [Hz]	P [HP]	P [kW]	n [rpm]	I Load [Amps]					Nom. Eff Load [%]			Pwr. Factor Load [%]			Torque [lb-ft]	T <sub>A</sub> /T <sub>N</sub> LRT [%]	T <sub>R</sub> /T <sub>N</sub> BDT [%]
						4/4	3/4	1/2	0	LRC	4/4	3/4	1/2	4/4	3/4	1/2			
575	$\Delta$	60	200	149.2	885	209	161.8	121.3	104.8	1160.00	94.5	95	94.9	78.4	75.6	67.4	1185.262	125	220

Frame	L449T	Type of constr.:	IMB3 Horizontal Foot Mounted	Continuous Duty	Insul. Class.:	H	Motor Prot.:	No Protection	B	S.F.:	1.15
Mtr WT:	2577 Lbs	Mounting:	LHS mount - view from DE (F-1)	Temp. Rise Cl:	Amb. Temp:	80°C @ S.F. 1.0 °C	Amb. Temp:	40 °C	kVA CODE:	IP 56	

### Mechanical data / Datos Mecánicos

WK2		Ventilation Type / Tipo de Ventilación	
Rotor Moment of Inertia:	75.8 lb-ft <sup>2</sup>	Type of Cooling:	TEFC
Ext Load Inertia Capability:	4510 lb-ft <sup>2</sup>	Fan Material:	Polypropylen ESD
Safe Stall Time		Fan Rotation:	Bidirectional
Hot:	15 Sec	<b>Additional information</b>	
Cold:	25 Sec	Space Heaters:	--
<b>Typical Noise Data</b>		VFD Operation:	Class I Zone 2 GR IIA, IIB T3 V.T.
A-weighted Sound			
Sound Pressure:	75 dB(A)		
Sound Power:	87 dB(A)	Brake:	--



Wiring diagram

Octave Band Center Frequencies Hertz: This values are for the standard bearing configuration.

	250	500	1000	2000	4000	8000	Hz
SPL@3 feet	65	71	71	65	62	53	dB(A)

### Special design / Opciones

Bearings / Baleros			Code	Description	Code	Description
	DE	NDE				
Bearing size:	6320 Z C3 S0	6315 Z C3 S0				
Bearing Type:	BALL BEARING	BALL BEARING				
AFBMA:	100BC03JP3	75BC03JP3				
<b>Grease / Grasa</b>						
Capacity:		7.23 oz				
Type:	Mobil Polyrex					
Thickener:	Polyurea (Standard)					
<b>Frame / Armazón</b>						
Frame material:	Cast Iron					
Coating (paint finish):	Standard Alkyed + Epoxy (C2)					
Color, paint shade:	Dark Charcoal Gray Metallic					
<b>Terminal box / Caja de Terminales</b>						
Terminal box position:	Conduit Box (Entry from feet)					

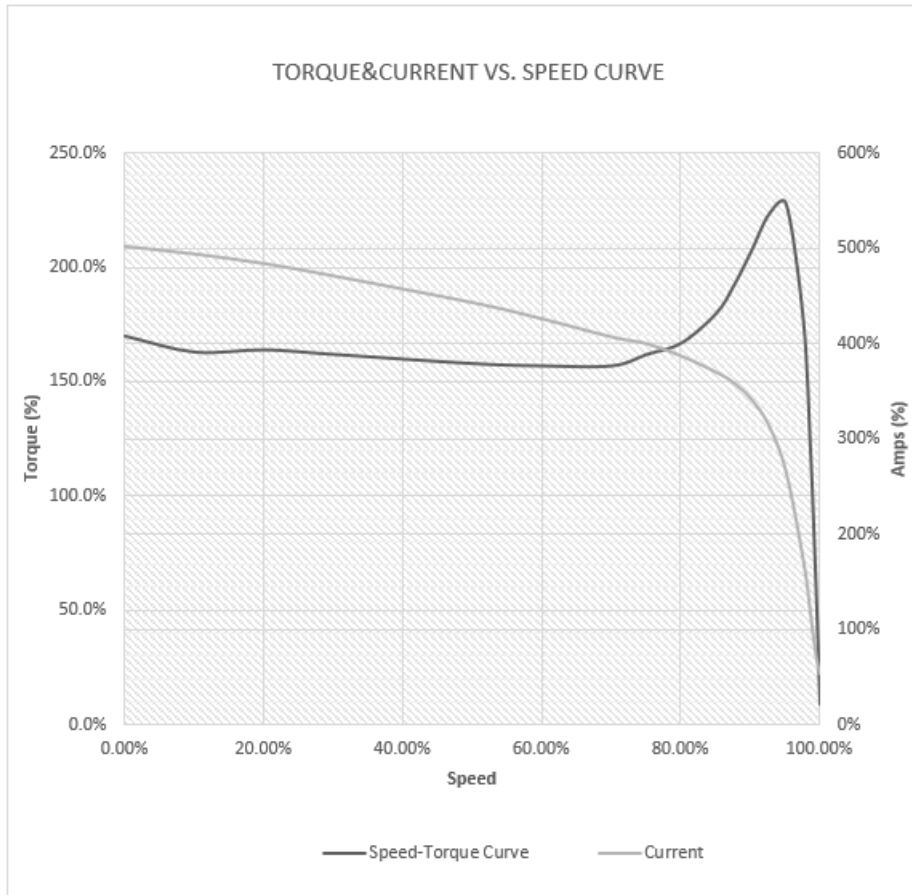


# NEMA MOTORS

Speed/Torque-Current Curves  
(Calculated) /  
Curvas Velocidad/Torque-Corriente  
(Calculadas)



DATA / DATOS: SD200 841 200HP - 8

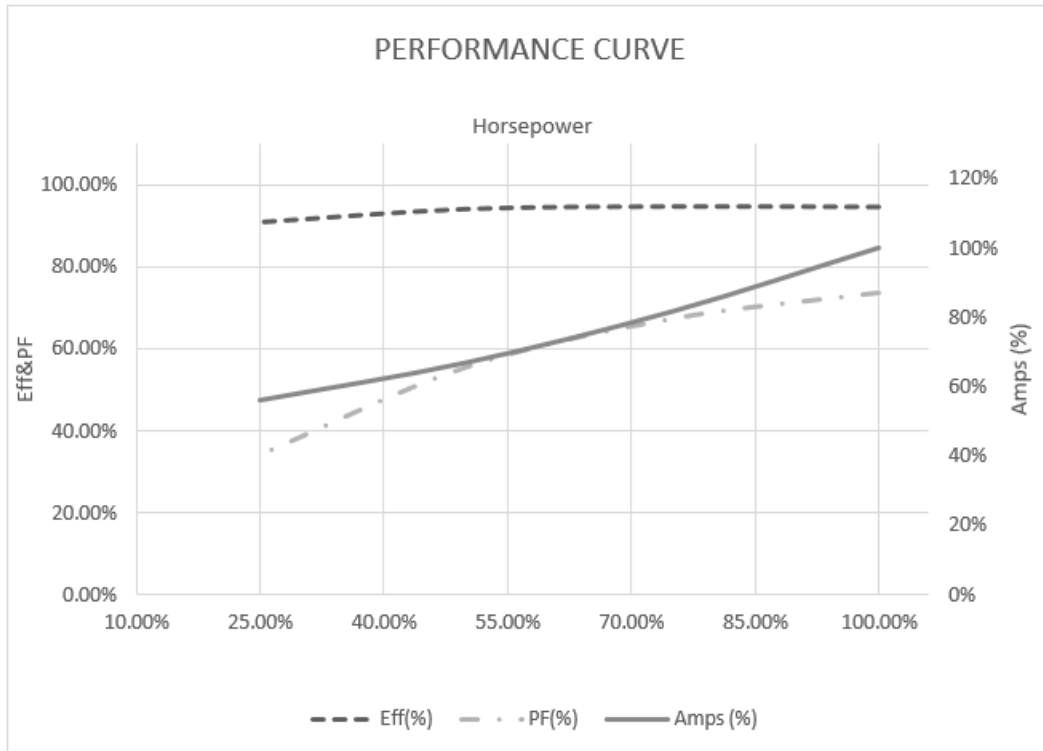


These values are calculated @  
Estos valores son calculados a 575

Calc:	3G44981390_AA/03	JN:	J44-0000-0649	Date/Fecha	31/10/2024
-------	------------------	-----	---------------	------------	------------



DATA / DATOS: SD200 841 200HP - 8



These values are calculated @  
 Estos valores son calculados a 575

<b>Calc:</b> 3G44981390_AA/03	<b>JN:</b> J44-0000-0649	<b>Date/Fecha</b> 31/10/2024
-------------------------------	--------------------------	------------------------------



# NEMA MOTORS

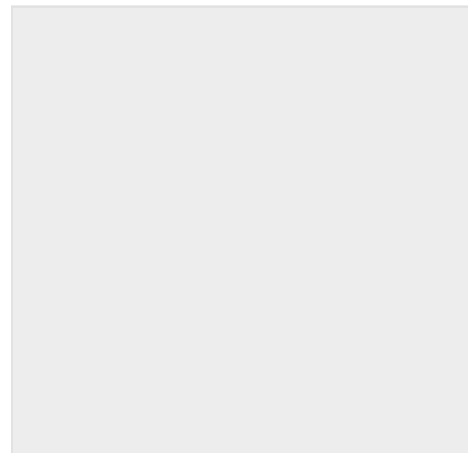
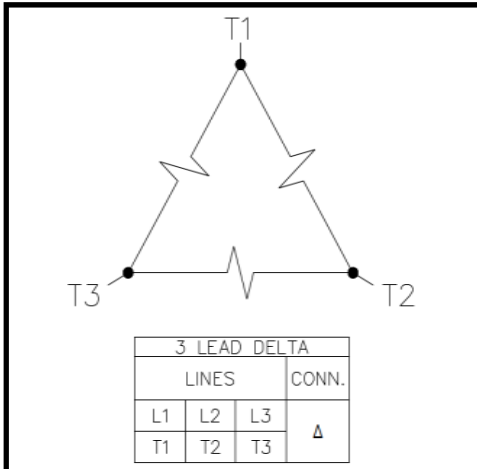
Wiring Diagram /  
Diagrama de Conexiones



TYPE / TIPO:

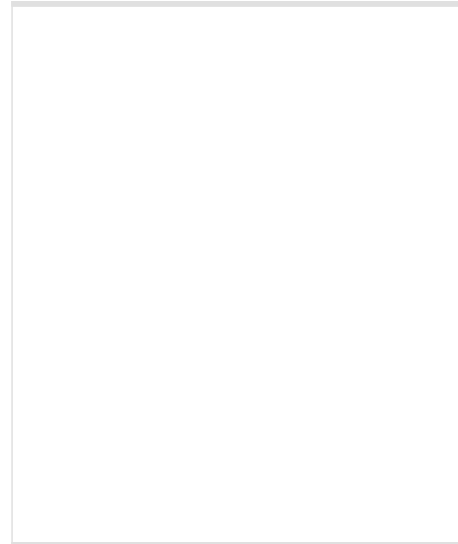
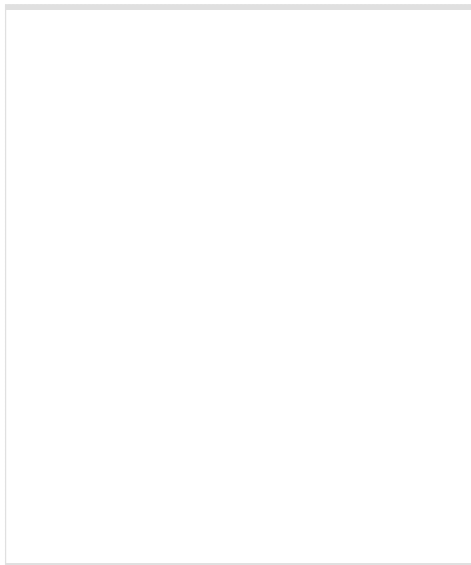
SD200 841

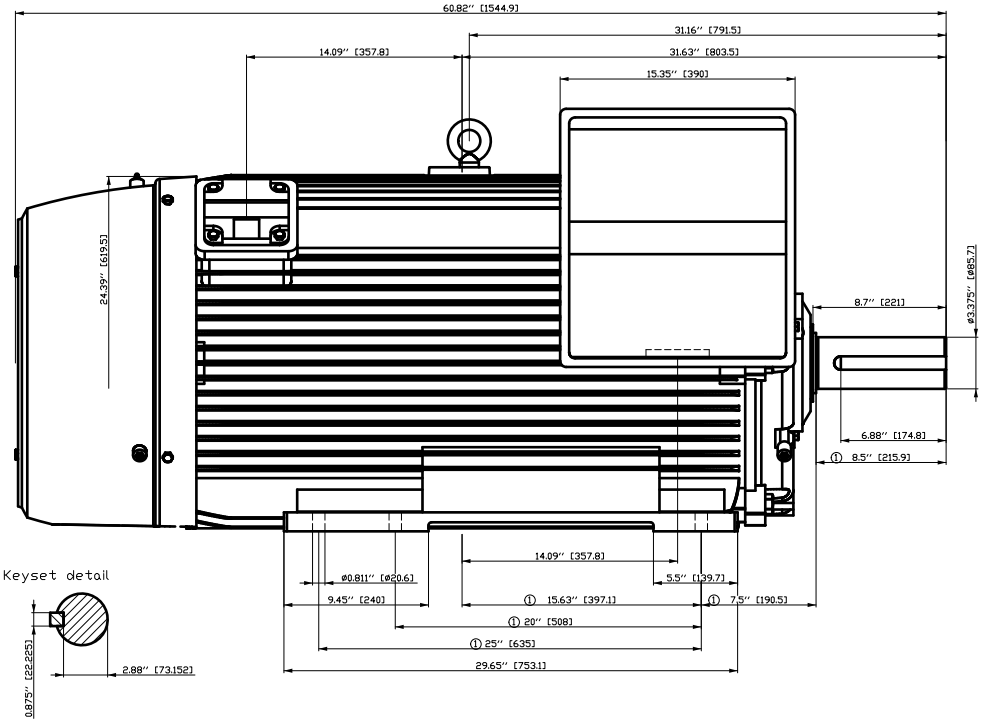
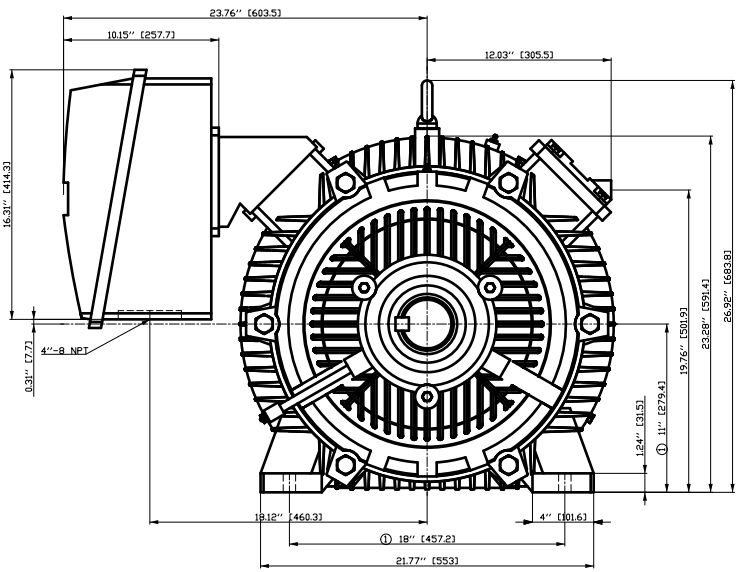
0



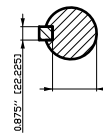
No Protection

**Motor Wiring Diagram /  
Diagrama de Conexiones del Motor**





Keyset detail



① Tolerances according to NEMA std.  
 All dimensions corresponding to assemblies and castings shall have a tolerance as per ISO 8062-3 DCTG 12.

V&@a&@A) aV) ) A) i&@e) A  
 V&@a&@a&@A) aV) ) A) i&@e) A

Tolerance	Surface	Material	Weight	Scale
F501 HGGE OOFFE300F E	Author Creator <b>ÖVS</b> Approval Department Change Order	Öa ^) • q) aV) i&@e) A T a: ^&@ } *	E	{ {
	Doc. State <b>i B E H</b> Revision Index RS	MFB Item No Doc No	Doc Type Paper Size <b>CH</b> 1st Language ^ 2nd Language a^	
© ABB 2023	Project No E	Ref No E	Sheet F of F	