

# **ABB BALDOR RELIANCE III**

---

## **Customer information packet**

1458

5HP, 1500/1800RPM, 3PH, 50/60HZ, 3735M, BUFF

Copyright © All product information within this document is subject to ABB Motors and Mechanical Inc. copyright © protection, unless otherwise noted.

7/7/2026 10:21:10 PM

**Specifications**

|                                      |  |
|--------------------------------------|--|
| <b>Enclosure</b>                     | TENV   |
| <b>Frame Material</b>                | Steel  |
| <b>Frequency</b>                     | 50.00 Hz<br>60.00 Hz<br>50.00 Hz<br>60.00 Hz   |
| <b>Motor Letter Type</b>             | Three Phase  |
| <b>Nameplate Output</b>              | 5  |
| <b>Number of Poles</b>               | 4<br>4   |
| <b>Output @ Frequency</b>            | 5.000 HP @ 60 HZ<br>5.000 HP @ 50 HZ   |
| <b>Phase</b>                         | 3<br>3   |
| <b>Product Style</b>                 | GRINDER  |
| <b>Speed</b>                         | 1500 rpm<br>1800 rpm<br>1500 rpm<br>1800 rpm   |
| <b>Synchronous Speed @ Frequency</b> | 1800 RPM @ 60 HZ   |
| <b>Voltage</b>                       | 208 V<br>230 V<br>460 V  |
| <b>Voltage @ Frequency</b>           | 208.0 V @ 60 HZ<br>230.0 V @ 50 HZ<br>230.0 V @ 60 HZ<br>460.0 V @ 50 HZ<br>460.0 V @ 60 HZ<br>208.0 V @ 50 HZ |
| <b>Agency Approvals</b>              | CSA<br>UR  |
| <b>Ambient Temperature</b>           | 40 °C  |
| <b>Base Indicator</b>                | Rigid  |

**Part Detail**

|                     |                        |
|---------------------|------------------------|
| <b>Revision</b>     | Y                      |
| <b>Type</b>         | AC                     |
| <b>Mech. spec.</b>  | G14-117                |
| <b>Base</b>         |                        |
| <b>Status</b>       | PRD/A                  |
| <b>Elec. spec.</b>  | G4WG0036               |
| <b>Layout</b>       | G4LY0117               |
| <b>Eff. date</b>    | 02-11-2022             |
| <b>CD Diagram</b>   | CD0258                 |
| <b>Poles</b>        | 04                     |
| <b>Leads</b>        | 9#14 11"FROM ENDTURN Y |
| <b>Proprietary</b>  | False                  |
| <b>Created date</b> | 01-01-0001             |

|                                      |  |
|--------------------------------------|--|
| <b>Current @ Voltage</b>             | 6.800 A @ 460.0 V<br>6.800 A @ 230.0 V<br>15.000 A @ 208.0 V<br>13.600 A @ 230.0 V |
| <b>Design Code</b>                   | B  |
| <b>Duty Rating</b>                   | CONT   |
| <b>Insulation Class</b>              | B  |
| <b>KVA Code</b>                      | H  |
| <b>Motor Lead Quantity/Wire Size</b> | 9 @ 14 AWG   |
| <b>Motor Standards</b>               | Other  |
| <b>Motor Type</b>                    | 3735M  |
| <b>Mounting Arrangement</b>          | F1   |
| <b>Product Family</b>                | Buffer   |
| <b>Service Factor</b>                | 1.00   |
| <b>Shaft Extension Location</b>      | Double Shaft   |
| <b>Shaft Rotation</b>                | Phase Seq-Opp Std Rot (CWODE)  |
| <b>Speed Code</b>                    | Single Speed   |
| <b>Starting Method</b>               | Direct on line   |

**Nameplate**

| <b>NP3411L</b> |                 |              |            |
|----------------|-----------------|--------------|------------|
| <b>CAT.NO.</b> | 1458            |              |            |
| <b>HP</b>      | 5               | <b>VOLTS</b> | 230        |
| <b>PHASE</b>   | 3               | <b>AMPS</b>  | 13.6       |
| <b>HZ</b>      | 50//60          | <b>RPM</b>   | 1500//1800 |
| <b>SER.NO</b>  |                 |              |            |
| <b>SPEC.</b>   | G14-117C-0036G1 |              |            |
| <b>BLANK</b>   |                 |              |            |

**Accessories**

| <b>Part number</b> | <b>Description</b>                    | <b>Multiplier</b> |
|--------------------|---------------------------------------|-------------------|
| GA20               | PEDESTAL INDUSTRIAL, CAST IRON 8"-14" | A8                |

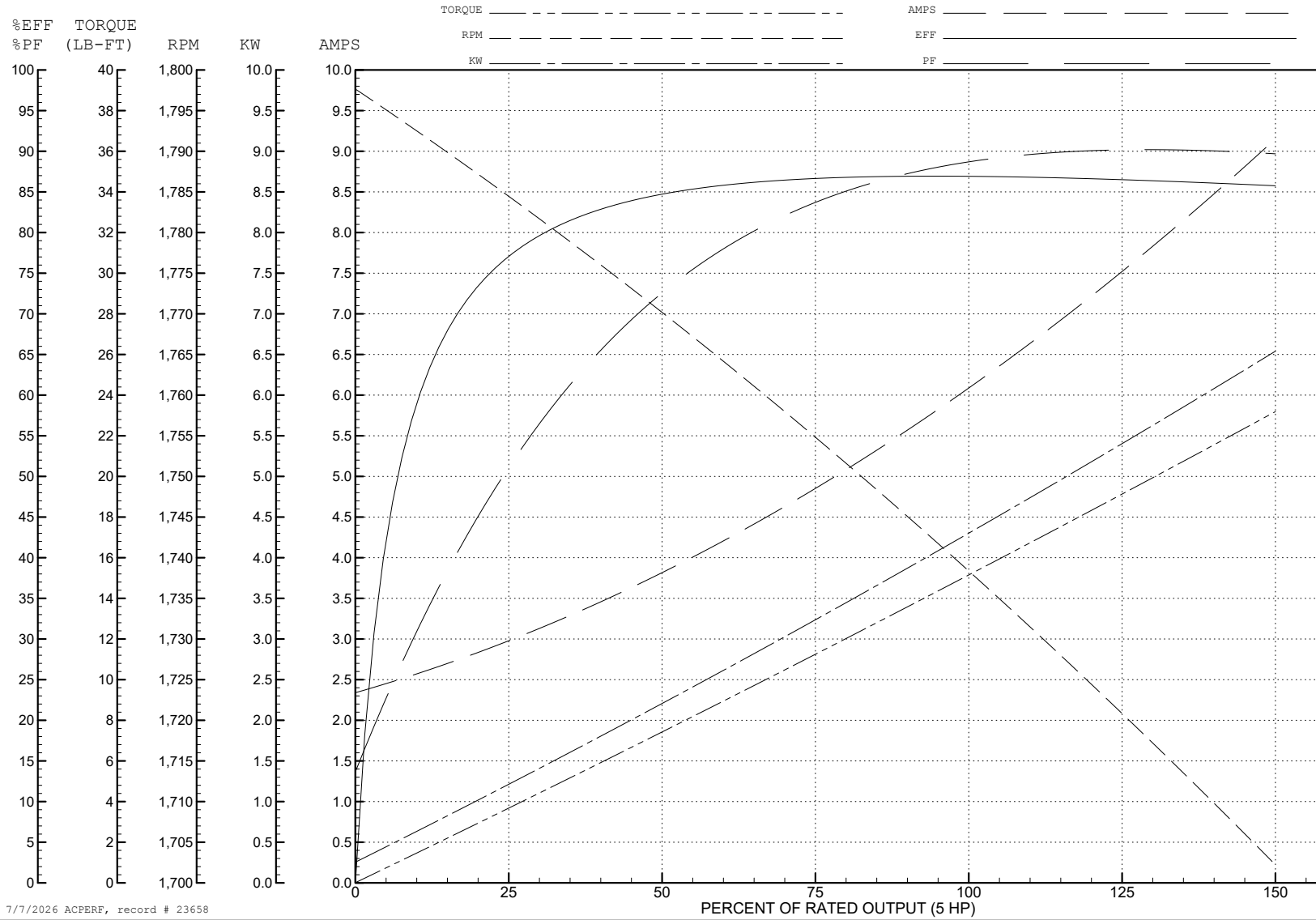
ABB Motors and Mechanical Inc.

WINDING # G4WG0036

5 HP 3 PH 60 HZ 1739 RPM 460 V 3735M

Typical performance - not guaranteed values.

TORQUES (LB-FT): PO=50.4 PU=21.4 LR=29.1 LRA=38.7



7/7/2026 ACPERF, record # 23658

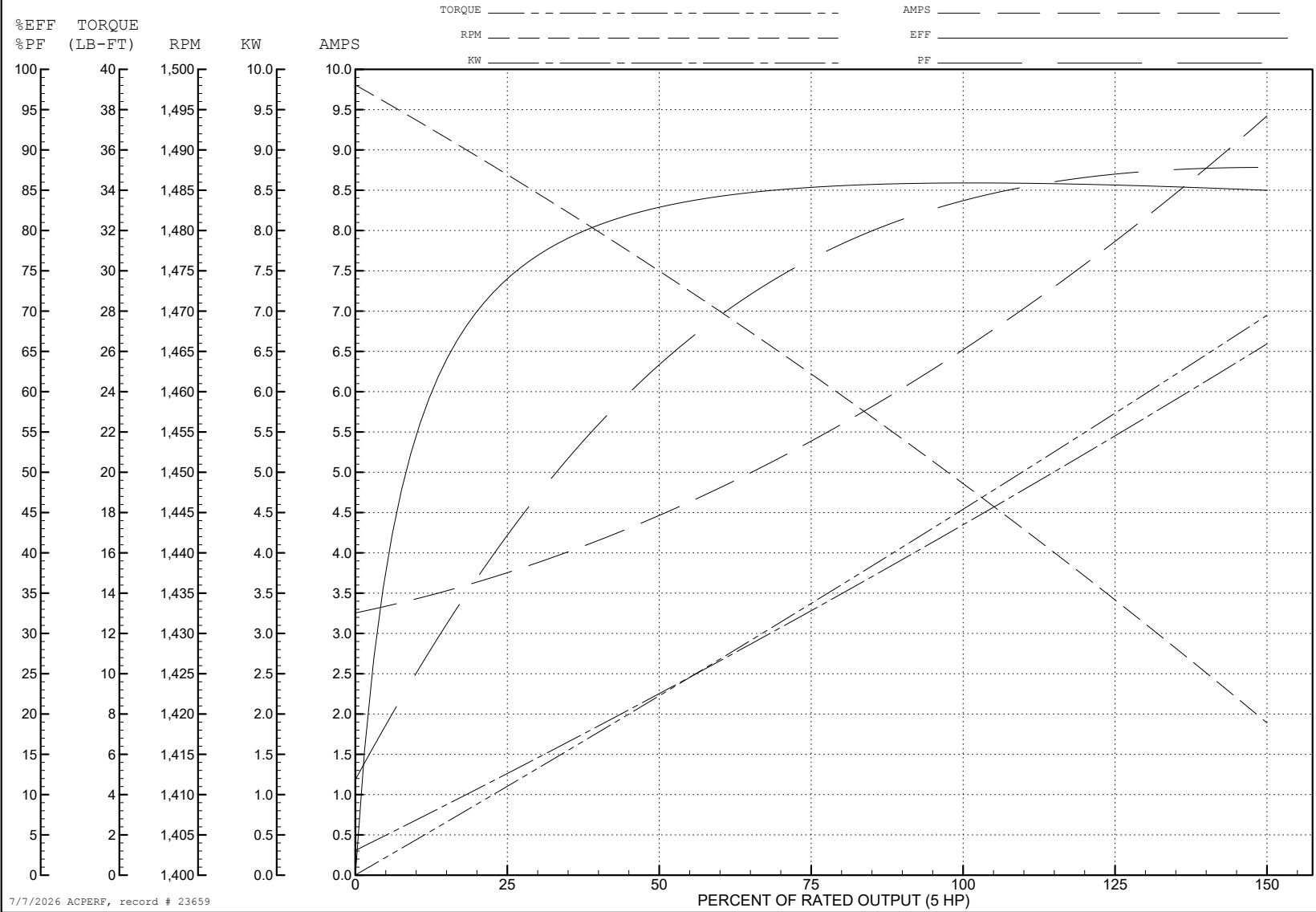
ABB Motors and Mechanical Inc.

WINDING # G4WG0036

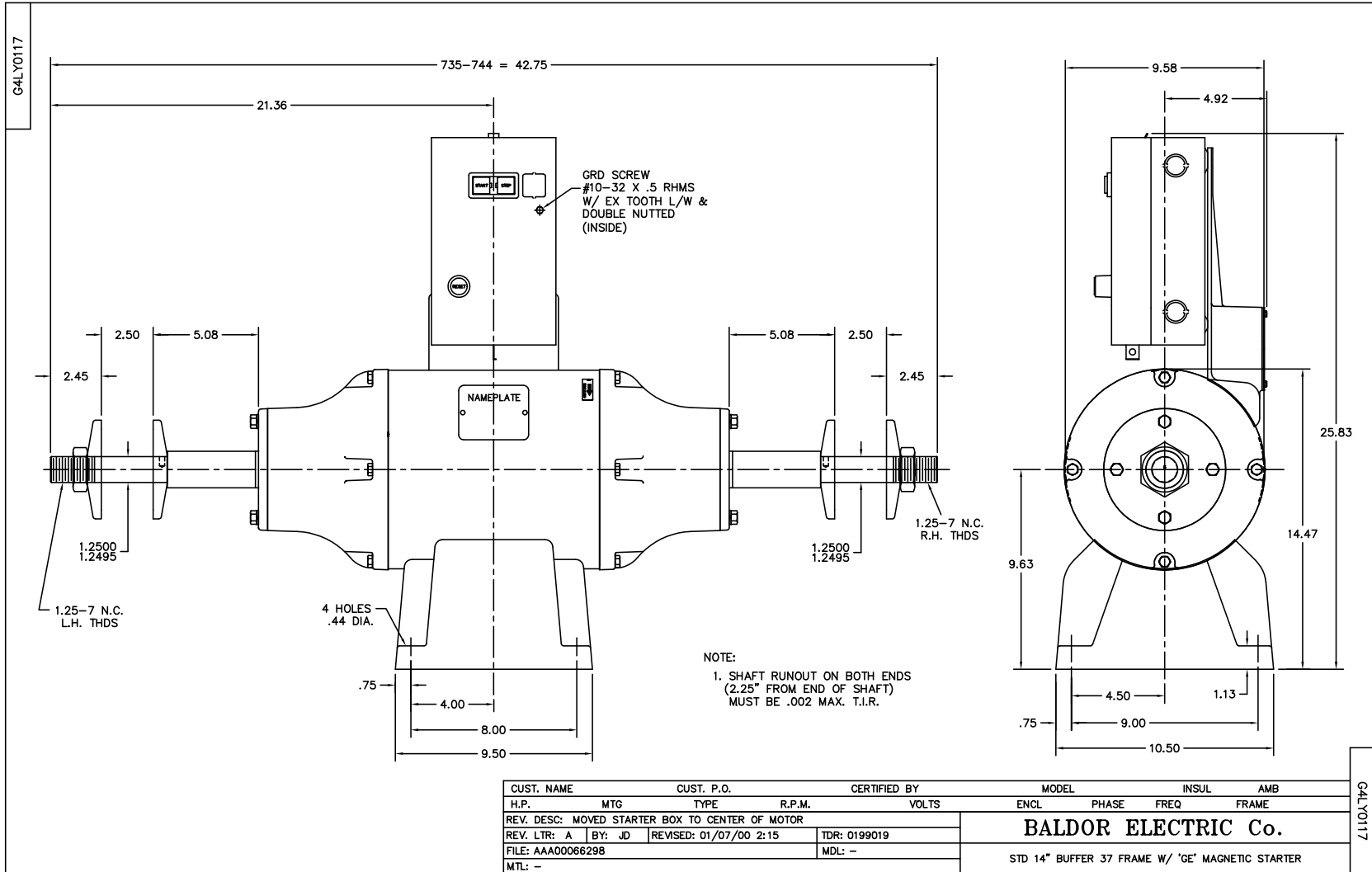
5 HP 3 PH 50 HZ 1449 RPM 460 V 3735M

Typical performance - not guaranteed values.

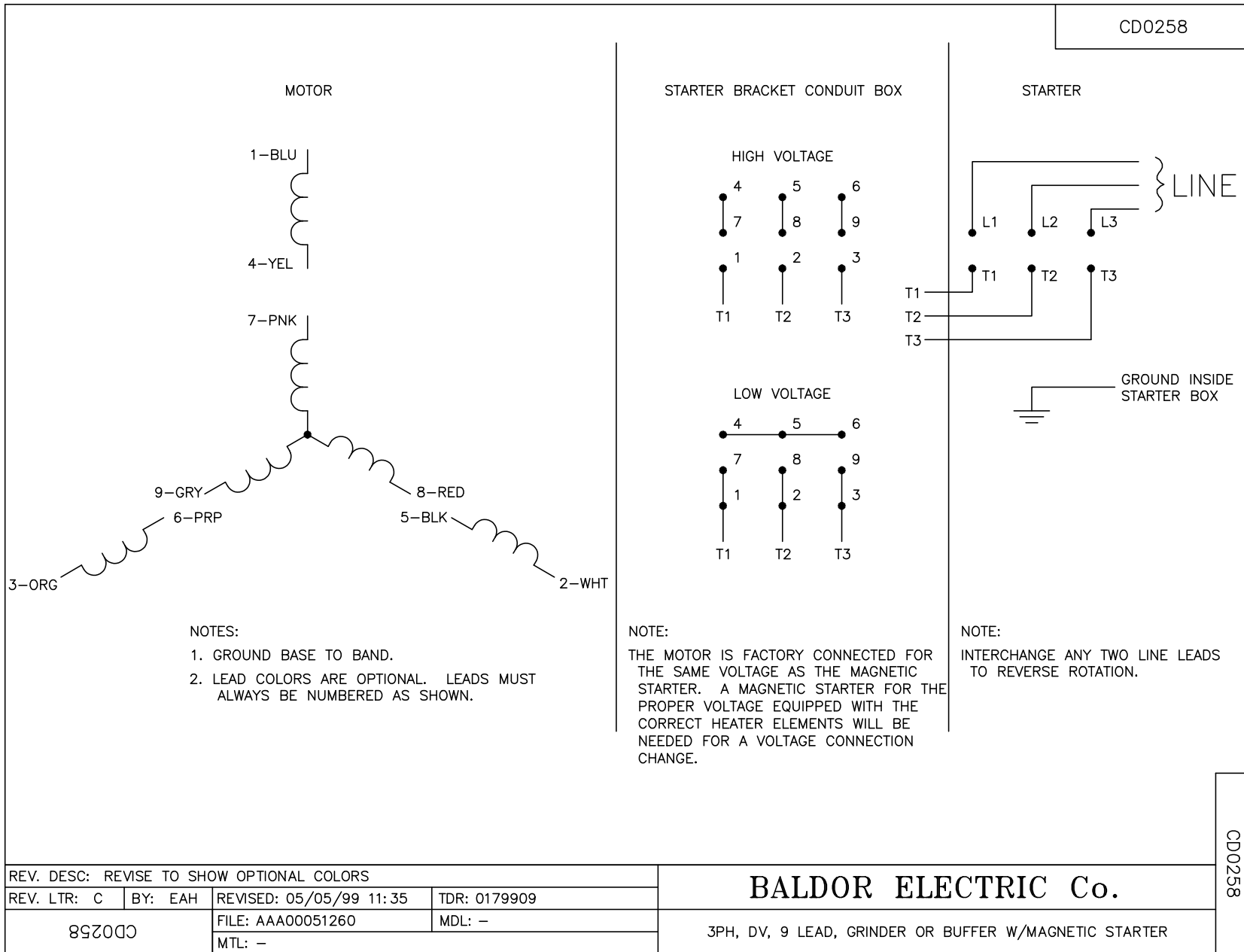
TORQUES (LB-FT): PO=71.6 PU=35.3 LR=47.8 LRA=46



7/7/2026 ACPERF, record # 23659



CD0258



CD0258

|   |         |                         |              |
|---|---------|-------------------------|--------------|
| REV. DESC: REVISE TO SHOW OPTIONAL COLORS |         |                         |              |
| REV. LTR: C                               | BY: EAH | REVISED: 05/05/99 11:35 | TDR: 0179909 |
| 89Z0C0                                    |         | FILE: AAA00051260       | MDL: -       |
|   |         | MTL: -                  |              |

**BALDOR ELECTRIC Co.**

3PH, DV, 9 LEAD, GRINDER OR BUFFER W/MAGNETIC STARTER