

BALDOR® • RELIANCE®

Customer information packet

1409W

40M 4P GRINDER

Specifications

Frequency	50.00 Hz
	60.00 Hz
Nameplate Output	7.5
Number of Poles	4
Phase	3
Shaft Diameter	1.250 IN
Speed	1500 rpm
	1800 rpm
Voltage	575 V

Part detail

Revision	B
Type	AC
Mech. spec.	G14-116
Base	
Status	PRD/A
Elec. spec.	G4WG0120
Layout	G4LY0116
Eff. date	12-15-2021
CD Diagram	CD0252
Poles	04
Leads	3#14
Proprietary	False
Created date	11-20-2020

Nameplate

NP3412L			
CAT.NO.	1409W		
HP	7.5	VOLTS	575
PHASE	3	AMPS	8
HZ	50//60	RPM	1500//1800
SER.NO			
SPEC.	G14-116A-0120		
BLANK			

Accessories

Part number	Description	Multiplier
GA20	PEDESTAL INDUSTRIAL, CAST IRON 8"-14"	A8
GA9	PAIR LIGHTED EYESHIELDS	A8
GA9-1	SINGLE LIGHTED EYESHIELD	A8
GA9S	PAIR EYESHIELDS W/ ON-OFF SWITCH	A8
GA11	PAIR EYESHIELDS	A8
B147	14" 30 GRIT GRINDING WHEEL	A8
B148	14" 46 GRIT GRINDING WHEEL	A8
DC14-3	DUST CONTROL FOR 14 IN GRINDER	A8

AC Induction Motor Performance Data

Record # 85539

Preliminary Data Sheet

Winding: G4WG0120-R001		Type: G1440M	Enclosure: TENV	
Nameplate Data			575 V, 60 Hz: Single Voltage Motor	
Rated Output (HP)	7.5	Full Load Torque	22.4 LB-FT	
Volts	575	Start Configuration	direct on line	
Full Load Amps	8	Breakdown Torque	50.6 LB-FT	
R.P.M.	1500//1800	Pull-up Torque	20 LB-FT	
Hz	50//60 Phase	Locked-rotor Torque	25.5 LB-FT	
NEMA Design Code	B KVA Code	H	Starting Current	31.5 A
Service Factor (S.F.)	1	No-load Current	2.28 A	
NEMA Nom. Eff.	0 Power Factor	0	Line-line Res. @ 25°C	3.79 Ω
Rating - Duty	40C AMB-CONT		Temp. Rise @ Rated Load	
			Locked-rotor Power Factor	40.1
			Rotor inertia	0.984 lb-ft ²

Load Characteristics 575 V, 60 Hz, 7.5 HP

% of Rated Load	25	50	75	100	125	150
Power Factor	56	78	85	88	89	88
Efficiency	90.1	92.2	91.8	90.8	89.3	87.4
Speed	1791	1783	1773	1763	1751	1737
Line amperes	2.8	3.94	5.39	7.03	8.87	11

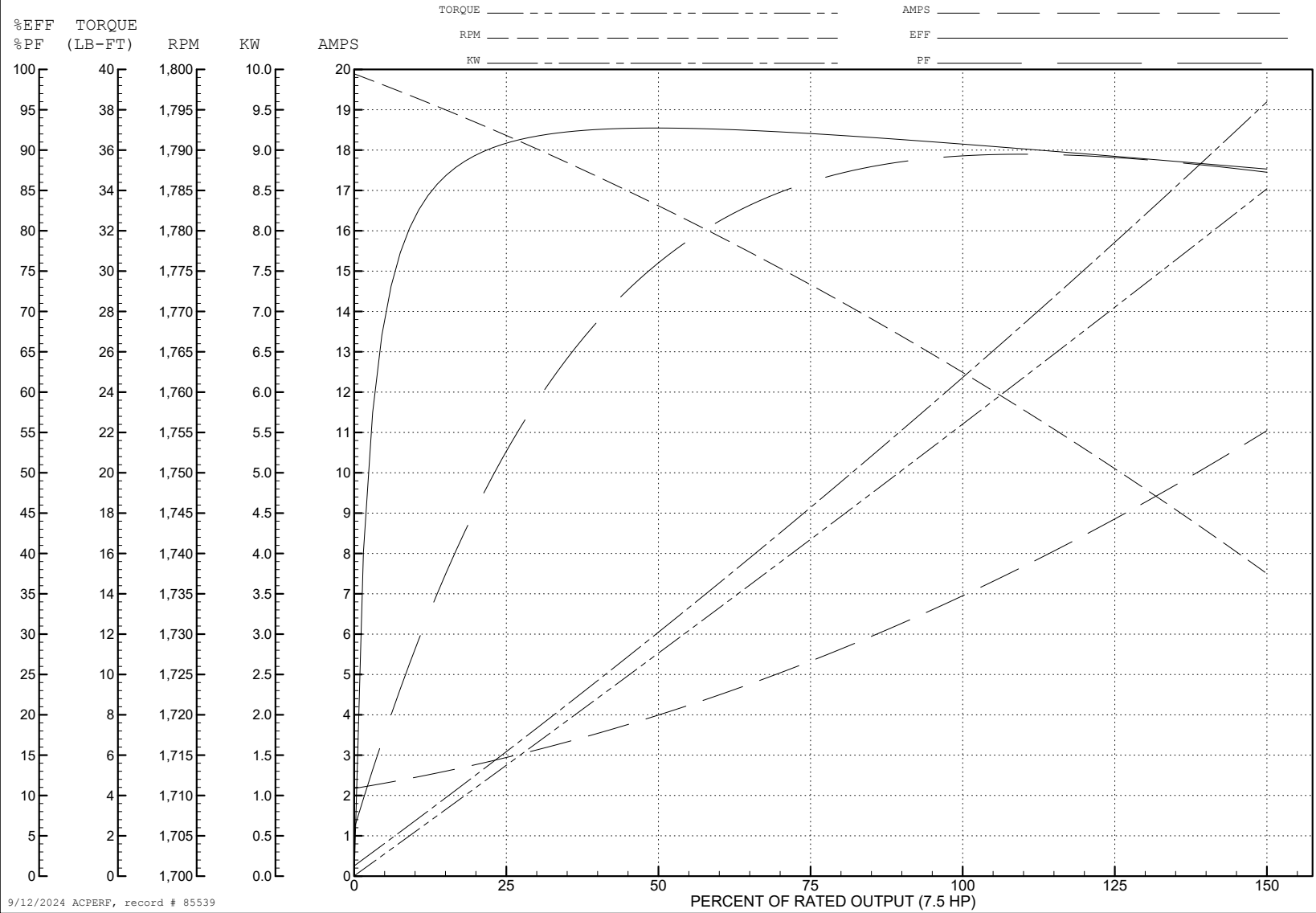
ABB Motors and Mechanical Inc.

WINDING # G4WG0120

7.5 HP 3 PH 60 HZ 1763 RPM 575 V G1440M

Typical performance - not guaranteed values.

TORQUES (LB-FT): PO=50.6 PU=20 LR=25.5 LRA=31.5



9/12/2024 ACPERF, record # 85539

AC Induction Motor Performance Data

Record # 85540

Preliminary Data Sheet

Winding: G4WG0120-R001		Type: G1440M	Enclosure: TENV	
Nameplate Data			575 V, 50 Hz: Single Voltage Motor	
Rated Output (HP)	7.5	Full Load Torque	26.8 LB-FT	
Volts	575	Start Configuration	direct on line	
Full Load Amps	8	Breakdown Torque	71.2 LB-FT	
R.P.M.	1500//1800	Pull-up Torque	20 LB-FT	
Hz	50//60 Phase	Locked-rotor Torque	39.8 LB-FT	
NEMA Design Code	B KVA Code	Starting Current	37.7 A	
Service Factor (S.F.)	1	No-load Current	3.14 A	
NEMA Nom. Eff.	0 Power Factor	Line-line Res. @ 25°C	3.79 Ω	
Rating - Duty	40C AMB-CONT	Temp. Rise @ Rated Load		
		Locked-rotor Power Factor	45.7	
		Rotor inertia	0.984 lb-ft ²	

Load Characteristics 575 V, 50 Hz, 7.5 HP

% of Rated Load	25	50	75	100	125	150
Power Factor	45	69	80	85	87	88
Efficiency	88	91	91.1	90.3	89	87.3
Speed	1493	1485	1478	1469	1460	1449
Line amperes	3.52	4.5	5.8	7.34	9.07	11

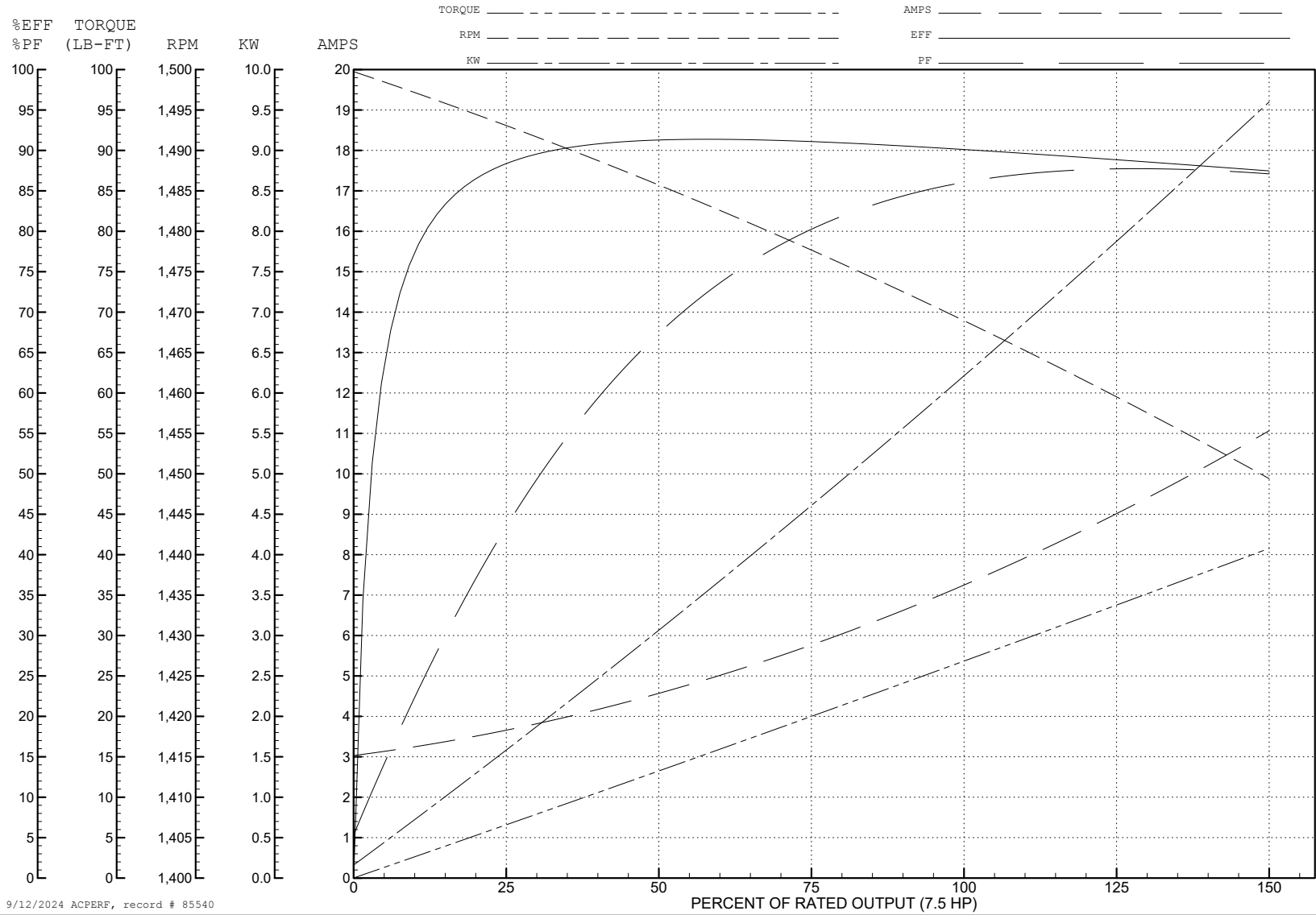
ABB Motors and Mechanical Inc.

WINDING # G4WG0120

7.5 HP 3 PH 50 HZ 1469 RPM 575 V G1440M

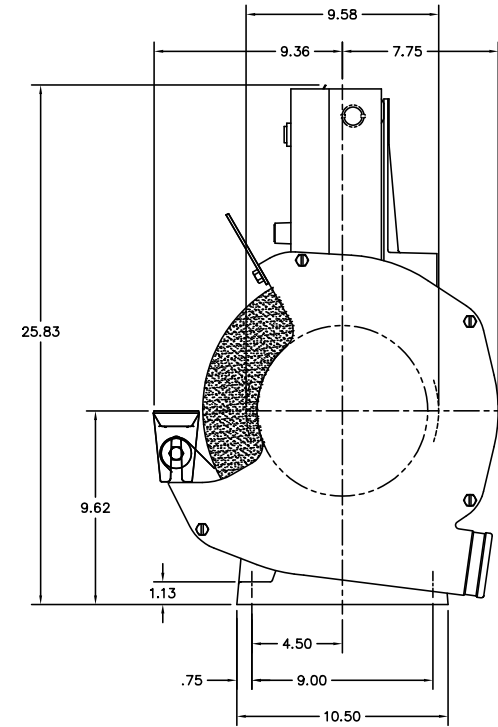
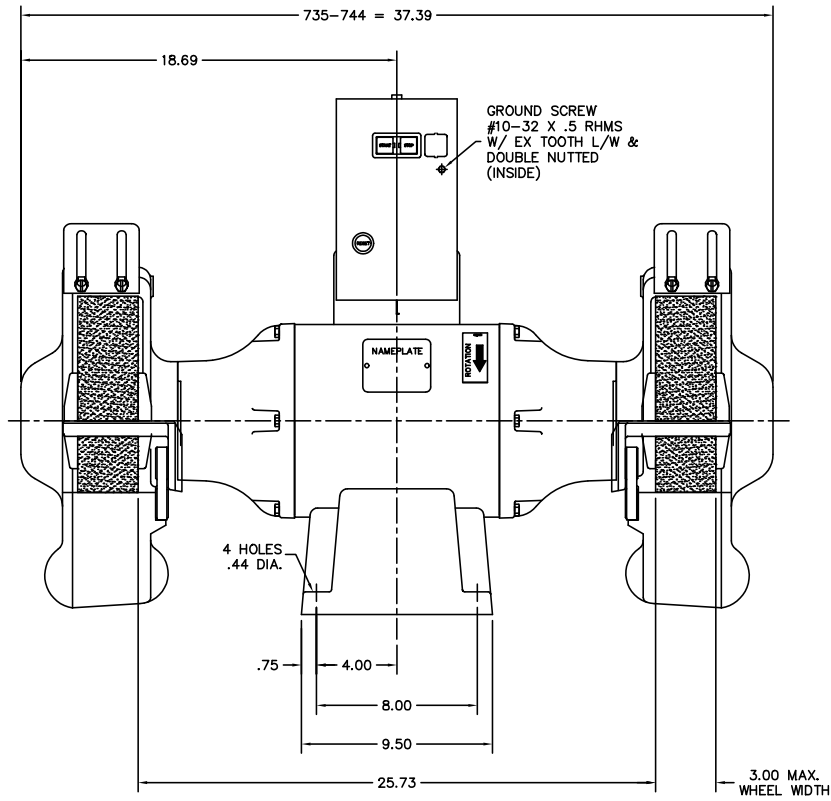
Typical performance - not guaranteed values.

TORQUES (LB-FT): PO=71.2 PU=20 LR=39.8 LRA=37.7



9/12/2024 ACPERF, record # 85540

G4LY0116

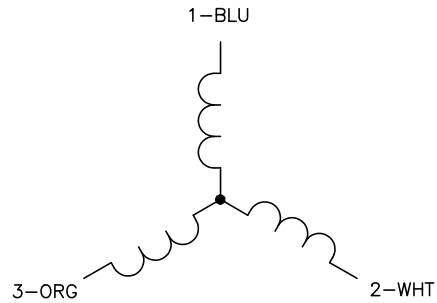


CUST. NAME		CUST. P.O.		CERTIFIED BY		MODEL		INSUL		AMB	
H.P.	MTG	TYPE	R.P.M.	VOLTS		ENCL	PHASE	FREQ	FRAME		
REV. DESC: MOVED STARTER BOX TO CENTER OF MOTOR						BALDOR ELECTRIC Co.					
REV. LTR: A	BY: JD	REVISED: 01/07/00 1:55	TDR: 0199019								
FILE: AAA00066297				MDL: -		STD 14" GRINDER 37 W/REAR EXHAUST & 'GE' MAGNETIC STARTER					
MTL: -											

G4LY0116

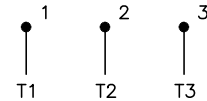
CD0252

MOTOR



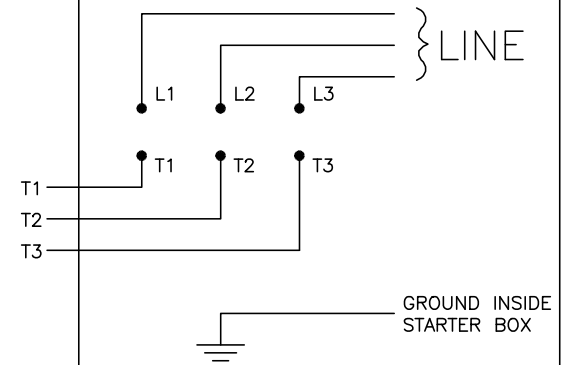
- NOTES:
1. GROUND BASE TO BAND.
 2. LEAD COLORS ARE OPTIONAL. LEADS MUST ALWAYS BE NUMBERED AS SHOWN.

STARTER BRACKET CONDUIT BOX



NOTE:
THE MOTOR VOLTAGE IS MATCHED TO THE MAGNETIC STARTER.

STARTER



NOTE:
INTERCHANGE ANY TWO LINE LEADS TO REVERSE ROTATION.

CD0252

REV. DESC: REVISE TO SHOW OPTIONAL COLORS			
REV. LTR: B	BY: EAH	REVISED: 05/05/99 10:02	TDR: 0179909
CD0252		FILE: AAA00051767	MDL: -
		MTL: -	

BALDOR ELECTRIC Co.

3PH, SV, 3 LEAD, GRINDER OR BUFFER W/MAGNETIC STARTER

