

# **ABB BALDOR RELIANCE III**

---

## **Customer information packet** 129W

3HP, 1500/1800RPM, 3PH, 50/60HZ, 3628M, GRND

**Specifications**

<b>Enclosure</b>	TENV
<b>Frame Material</b>	Steel
<b>Frequency</b>	50.00 Hz 60.00 Hz 50.00 Hz 60.00 Hz
<b>Motor Letter Type</b>	Three Phase
<b>Nameplate Output</b>	3
<b>Number of Poles</b>	4 4
<b>Output @ Frequency</b>	3.000 HP @ 60 HZ 3.000 HP @ 50 HZ
<b>Phase</b>	3 3
<b>Product Style</b>	GRINDER
<b>Speed</b>	1500 rpm 1800 rpm 1500 rpm 1800 rpm
<b>Synchronous Speed @ Frequency</b>	1500 RPM @ 50 HZ
<b>Voltage</b>	575 V
<b>Voltage @ Frequency</b>	575.0 V @ 50 HZ 575.0 V @ 60 HZ
<b>Agency Approvals</b>	UR CSA
<b>Ambient Temperature</b>	40 °C
<b>Base Indicator</b>	Rigid
<b>Current @ Voltage</b>	3.000 A @ 575.0 V
<b>Duty Rating</b>	CONT
<b>Insulation Class</b>	B
<b>KVA Code</b>	G
<b>Motor Lead Quantity/Wire Size</b>	3 @ 16 AWG

**Part Detail**

<b>Revision</b>	W
<b>Type</b>	AC
<b>Mech. spec.</b>	G12-118
<b>Base</b>	
<b>Status</b>	PRD/A
<b>Elec. spec.</b>	G2WG0047
<b>Layout</b>	G2LY0118
<b>Eff. date</b>	06-05-2026
<b>CD Diagram</b>	CD0259
<b>Poles</b>	04
<b>Leads</b>	3#16 12"FRM STAT IRN Y
<b>Proprietary</b>	False
<b>Created date</b>	01-01-0001

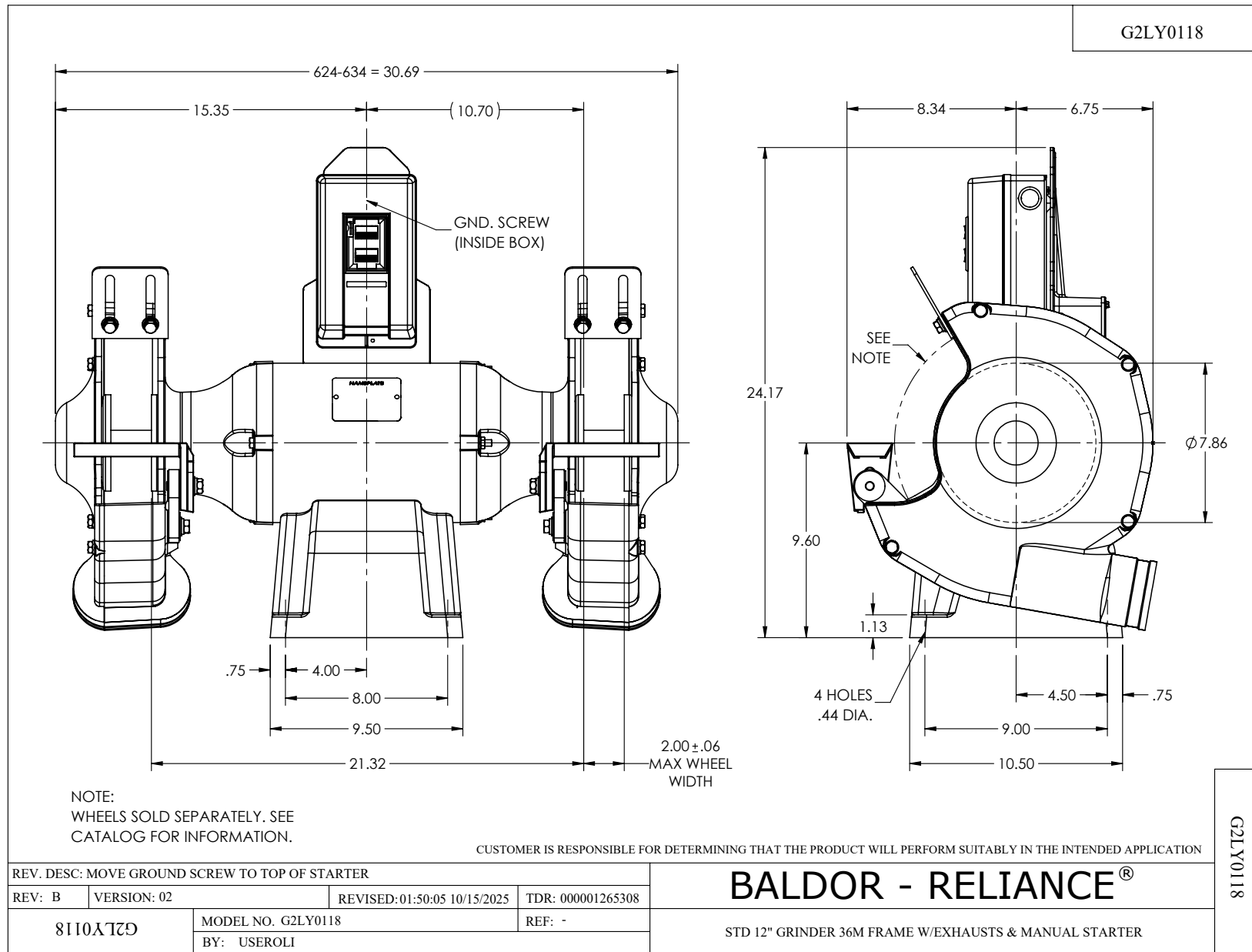
<b>Motor Standards</b>	Other
<b>Motor Type</b>	3628M
<b>Mounting Arrangement</b>	F1
<b>Product Family</b>	Grinder
<b>Service Factor</b>	1.00
<b>Shaft Extension Location</b>	Double Shaft
<b>Shaft Rotation</b>	Phase Seq-Opp Std Rot (CWODE)
<b>Speed Code</b>	Single Speed
<b>Starting Method</b>	Direct on line
<b>Thermal Device - Winding</b>	None

**Nameplate**

<b>NP3412L</b>			
<b>CAT.NO.</b>	129W		
<b>HP</b>	3	<b>VOLTS</b>	575
<b>PHASE</b>	3	<b>AMPS</b>	3
<b>HZ</b>	50//60	<b>RPM</b>	1500//1800
<b>SER.NO</b>			
<b>SPEC.</b>	G12-118B-0047		
<b>BLANK</b>			

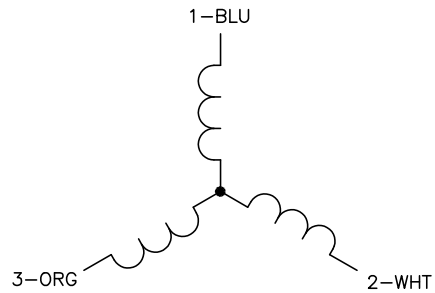
**Accessories**

<b>Part number</b>	<b>Description</b>	<b>Multiplier</b>
GA20	PEDESTAL INDUSTRIAL, CAST IRON 8"-14"	A8
GA9	PAIR LIGHTED EYESHIELDS	A8
GA9-1	SINGLE LIGHTED EYESHIELD	A8
GA9S	PAIR EYESHIELDS W/ ON-OFF SWITCH	A8
GA11	PAIR EYESHIELDS	A8
B125	12" 30 GRIT GRINDING WHEEL	A8
B126	12" 46 GRIT GRINDING WHEEL	A8
DC12	DUST CONTROL UNIT	A8
DC12-3	DUST CONTROL UNIT	A8



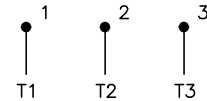
CD0259

MOTOR



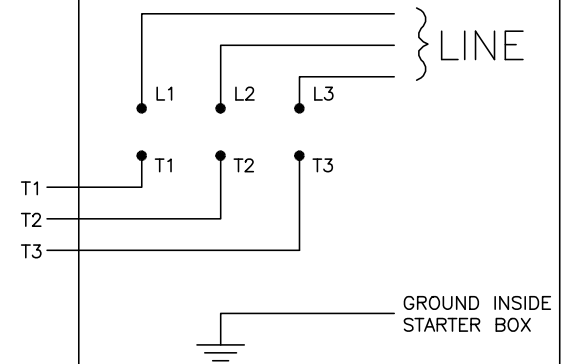
- NOTES:
1. GROUND BASE TO BAND.
  2. LEAD COLORS ARE OPTIONAL. LEADS MUST ALWAYS BE NUMBERED AS SHOWN.

STARTER BRACKET CONDUIT BOX



NOTE:  
BALDOR LABEL ON STARTER INDICATES  
FACTORY VOLTAGE.

STARTER



NOTE:  
INTERCHANGE ANY TWO LINE LEADS TO  
REVERSE ROTATION.

CD0259

REV. DESC: REVISE TO SHOW OPTIONAL COLORS			
REV. LTR: B	BY: JLP	REVISED: 05/05/99 11:46	TDR: 0179909
6Z0D0		FILE: AAA00051766	MDL: -
		MTL: -	

**BALDOR ELECTRIC Co.**

3PH, SV, 3 LEAD, GRINDER OR BUFFER W/MANUAL STARTER

