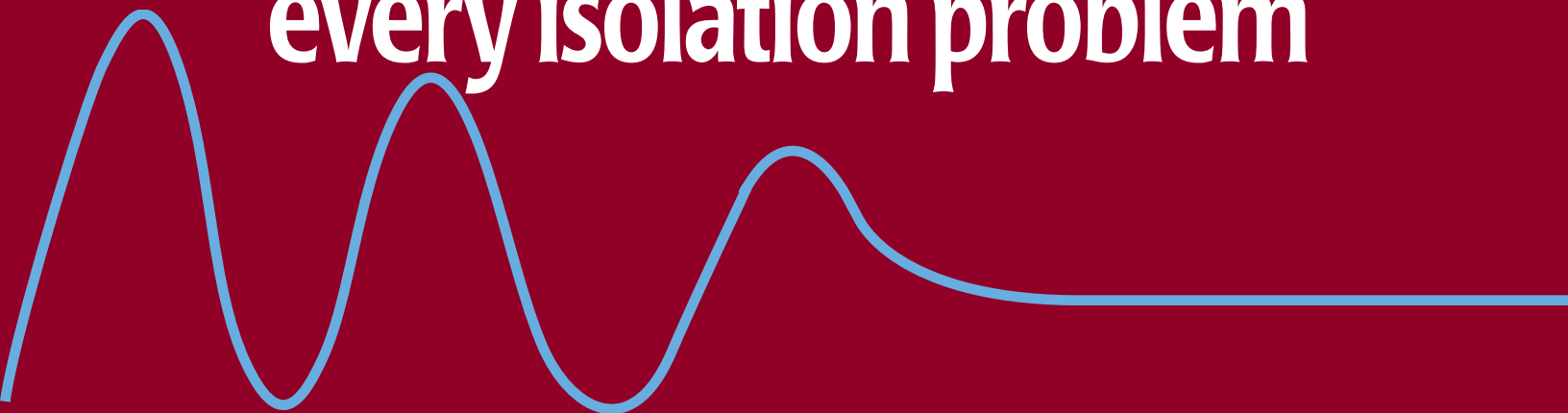


KORFUND DYNAMICS



**...a solution for
every isolation problem**



R/RD Series

Flush Type Neoprene Mountings

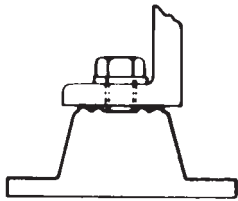
Features/Benefits

- Static Load Ranges from 10–4,000 lbs.
- Deflections to ¼" with Type R, to ½" with Type RD
- Available in 4 sizes
- Corrosion resistant
- Molded in colored oil-resistant neoprene
- 5 colors for error free identification
- Non-skid ribbed neoprene on base plate

Applications

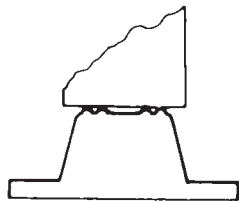
- Air Handling Units
- Business Machines
- Compressors, Pumps and Fans
- Instrument Panels
- Machine tools
- Motor Generators
- Transformers

Mounting Configurations



**Type R or RD
IF BOLTING IS PREFERRED**

Type R or RD mountings are furnished with a tapped hole in the center. This enables the equipment to be bolted securely to the mounting.



**Type R or RD
NO BOLTING REQUIRED**

Type R or RD mountings may be used without bolting under machines having no lateral or severe vertical motion.



Non-Skid Base

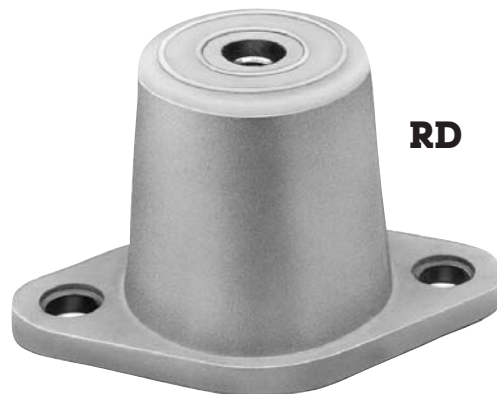
The R/RD Series base plates are covered in non-skid ribbed neoprene



R



R4

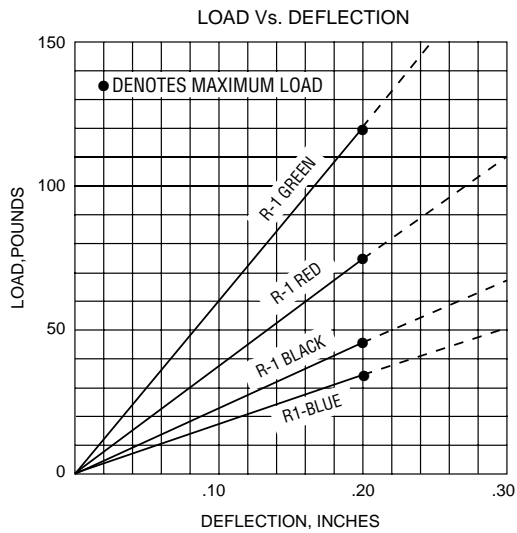
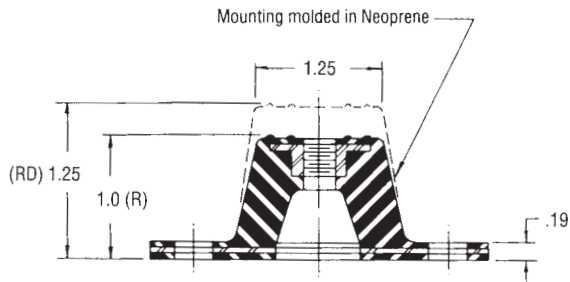
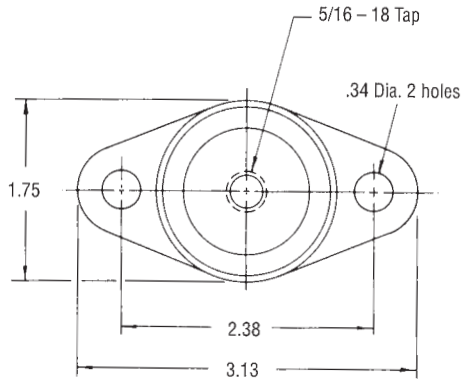


RD

**NOTE: Mounts are not inherently fail safe.
For stationary, vertical loading only.**

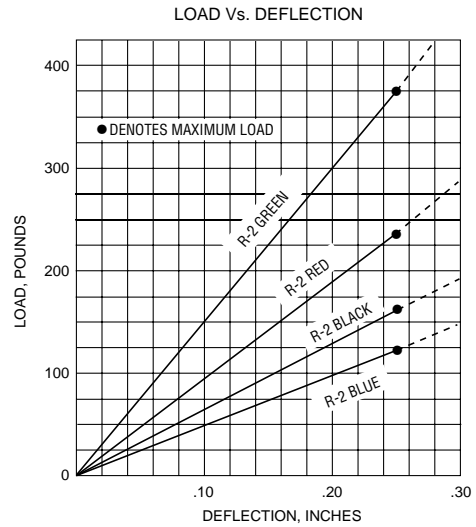
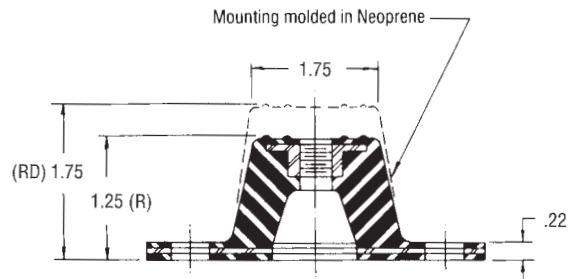
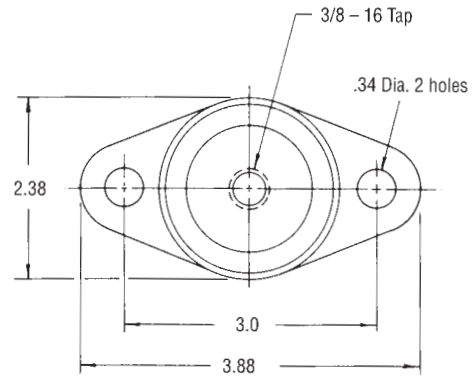
R1/RD1 Series

| Type | Color Code | Max.Load, lbs. | Deflection, in. | |
|--------|------------|----------------|-----------------|------|
| | | | R | RD |
| R1/RD1 | Blue | 35 | 0.20 | 0.40 |
| | Black | 45 | | |
| | Red | 70 | | |
| | Green | 120 | | |



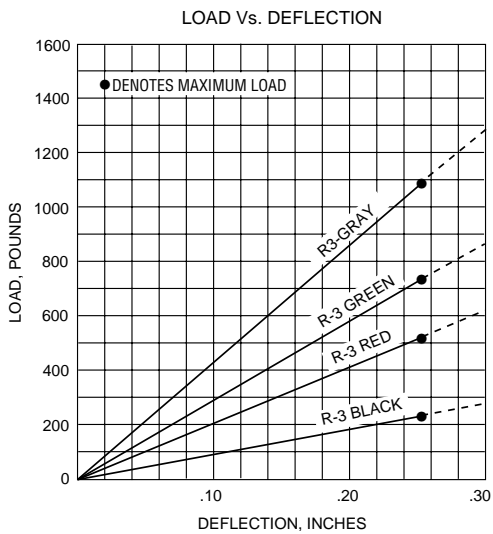
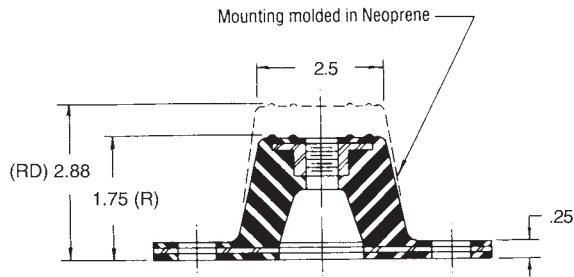
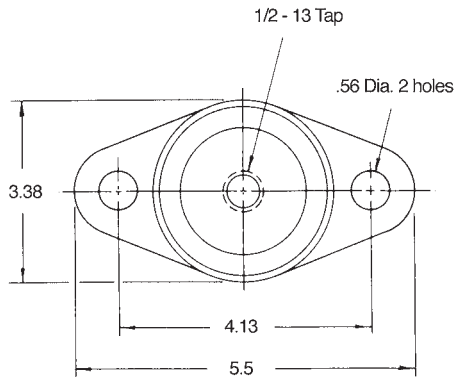
R2/RD2 Series

| Type | Color Code | Max.Load, lbs. | Deflection, in. | |
|--------|------------|----------------|-----------------|------|
| | | | R | RD |
| R2/RD2 | Blue | 135 | 0.25 | 0.50 |
| | Black | 170 | | |
| | Red | 240 | | |
| | Green | 380 | | |
| | Grey | 550 | | |



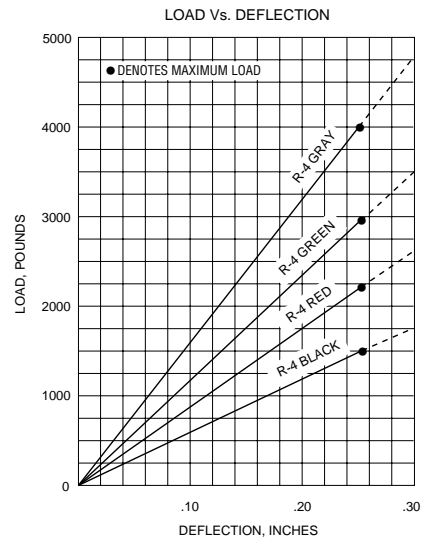
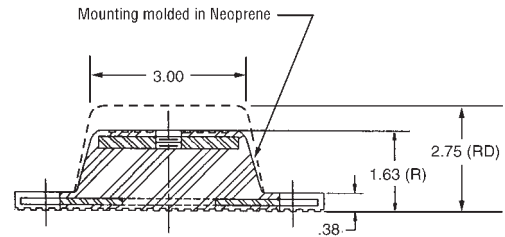
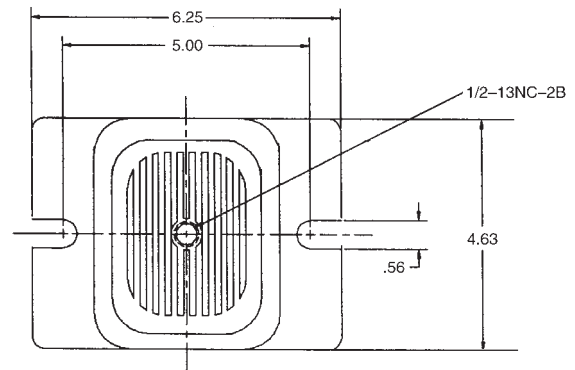
R3/RD3 Series

| Type | Color Code | Max.Load, lbs. | Deflection, in. | |
|--------|------------|----------------|-----------------|------|
| | | | R | RD |
| R3/RD3 | Black | 250 | 0.25 | 0.50 |
| | Red | 525 | | |
| | Green | 750 | | |
| | Gray | 1100 | | |



R4/RD4 Series

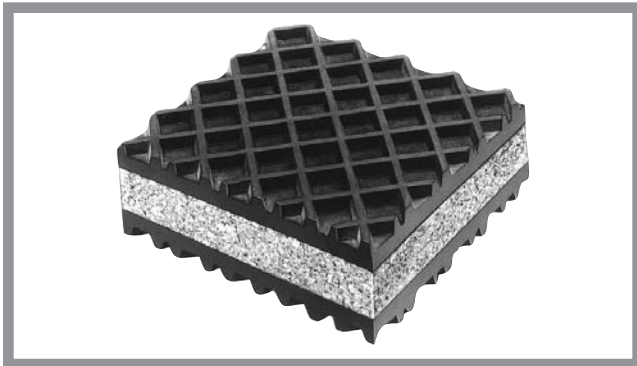
| Type | Color Code | Max.Load, lbs. | Deflection, in. | |
|--------|------------|----------------|-----------------|------|
| | | | R | RD |
| R4/RD4 | Black | 1500 | 0.25 | 0.50 |
| | Red | 2250 | | |
| | Green | 3000 | | |
| | Gray | 4000 | | |



Pad Type Mounts Elastomer & Cork

Elasto-Rib

Elasto-Rib has a core of high grade cork plate, permanently bonded between two layers of waffle design, oil-resistant synthetic rubber. The waffle design increases deflection and forms a non-skid surface which resists "creeping" of equipment. Bolting or cementing to the floor is usually eliminated.



Load Range:

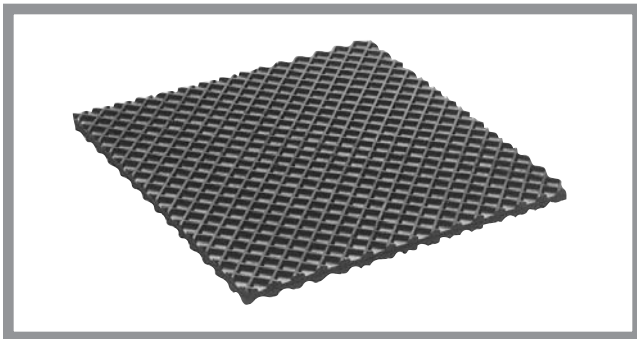
Standard Capacity to 60 lbs./sq. inch
(Consult factory for higher capacity loading)

Thickness: 1"

Max Sheet Size; 24" x 36"

Suggested Loadings:

50 lbs./sq. in. for engines, compressors, fans.



Load Range:

Standard Capacity to 60 lbs./sq. inch
High Capacity to 60-120 lbs./sq. inch

Thickness: 1/4" (waffle-embossed – one side only)
1/2" (waffle-embossed – both sides)

Max. Sheet Size: 24" x 36"

Suggested Loadings:

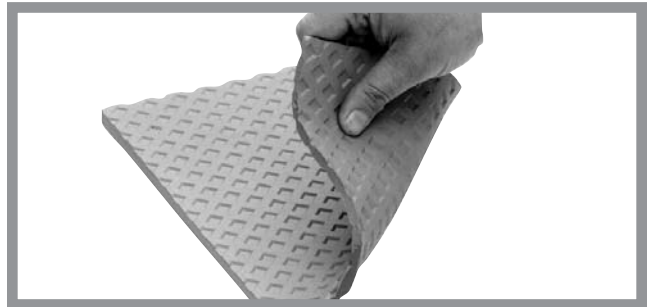
50 lbs./sq. in. for engines, compressors, fans.
40 lbs./sq. in. for punch presses, shears etc.

Korpad

Korpad is a high-quality, durable, neoprene pad material with waffle design molded on to both faces. It is resistant to water, oils, cleaning compounds, heat and other environments normally found in manufacturing and processing plants. Tear and abrasion resistance is excellent while tensile strength and compressive strength is extremely high. Korpad is 1/4" thick in 24" x 24" sheets and is available in load ranges to 200 lbs./sq. in.

Black Korpad is for use with lighter equipment.

Red Korpad is used for heavy duty applications.

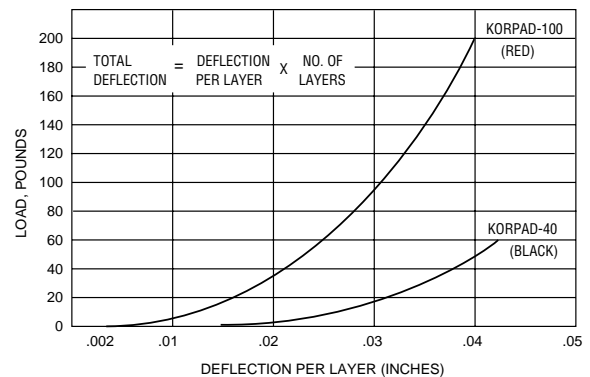


Korpads have been tested to over 1000 PSI without failure. Recommended loads:

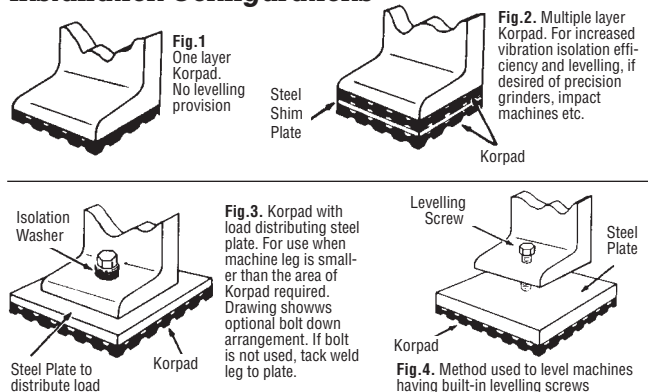
| Type | Color | Design Load (PSI) | Maximum Load (PSI) |
|-------------|-------|-------------------|--------------------|
| Korpad 1000 | Red | 100 | 200 |
| Korpad 40 | Black | 40 | 60 |

For static applications, where weight is known, maximum loads can be used. For impact machinery, or where weight distribution is not accurately known, use design loads only.

LOAD Vs. DEFLECTION



Installation Configurations



Series CE/CESS

Steel Spring Vibration Isolators

Features/Benefits

- Effective Vibration Control
- Loads up to 10,500 lbs.
- Static Deflections up to 1.36"
- Available with, or without adjustable snubbing
- Rugged cast-iron housing
- Quickly and easily installed

Applications

- Stationary Equipment
- HVAC Equipment
- Compressors, Pumps
- Motor Generator Sets
- Fans, Blowers

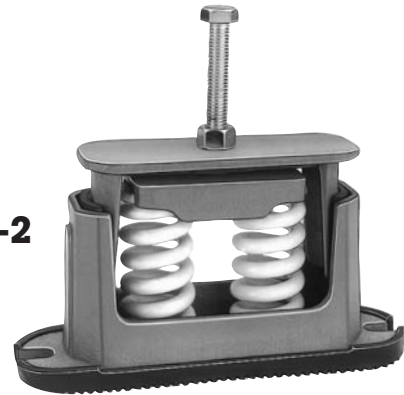
Korfund Series CE/CESS Spring Isolators are available in 4 sizes for loads up to 10,500 lbs., and static deflections up to 1.36". See Load/Deflection tables for actual ratings. Cast-iron housings are shop primed with a rust inhibitor primer. All nuts and bolts are electro zinc plated, and coil springs are powder coated and color coded for easy identification.

Optional: Series CESS-1 and CESS-2 Isolators are furnished with adjustable horizontal snubbing devices to control oscillation and withstand lateral forces. (Not available on CE-4 or CE-7). All dimensions, loads, deflections, are the same as CE-1 and CE-2 un-snubbed mounts.

CE-1



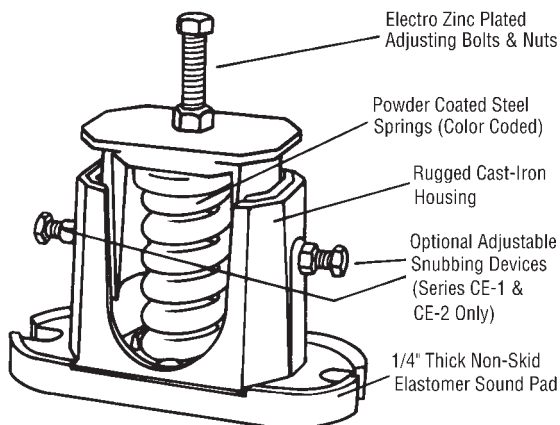
CE-2



CE-4



CE-7



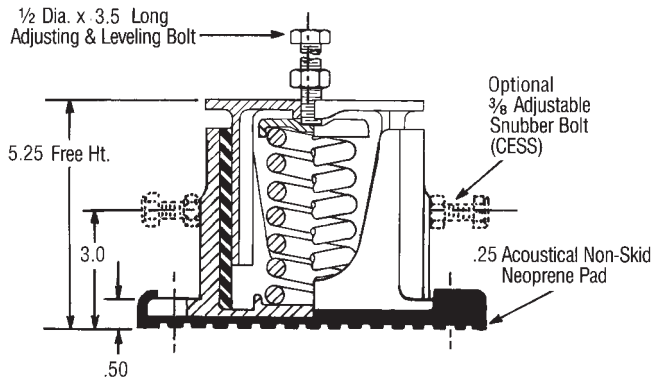
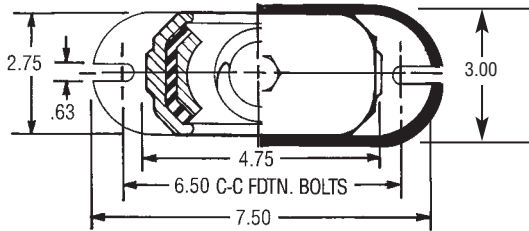
CE-1 Series

Loads/Deflections

| Type & Size | Max. Load | Deflection (inches) | Isolator Constant Pounds/Inch | Spring Color | No. of Springs |
|-------------|-----------|---------------------|-------------------------------|--------------|----------------|
| CE-1-19 | 85 | 1.36 | 63 | PINK | ONE |
| CE-1-21 | 115 | 1.31 | 87 | BLACK | |
| CE-1-22 | 170 | 1.28 | 133 | BLUE | |
| CE-1-23 | 225 | 1.26 | 179 | YELLOW | |
| CE-1-24 | 325 | 1.23 | 264 | BROWN | |
| CE-1-25 | 450 | 1.22 | 368 | RED | |
| CE-1-26 | 600 | 1.17 | 513 | PURPLE | |
| CE-1-27 | 750 | 1.06 | 707 | ORANGE | |
| CE-1-28 | 900 | 1.02 | 881 | GREEN | |
| CE-1-31 | 1100 | .83 | 1327 | GRAY | |
| CE-1-32 | 1300 | .74 | 1758 | WHITE | |
| *CE-1-35 | 1500 | .70 | 2145 | GOLD | |

*Free Height .50 higher than shown in diagram

Note: Series CESS-1 has the same dimensions, loads & deflections as Series CE-1



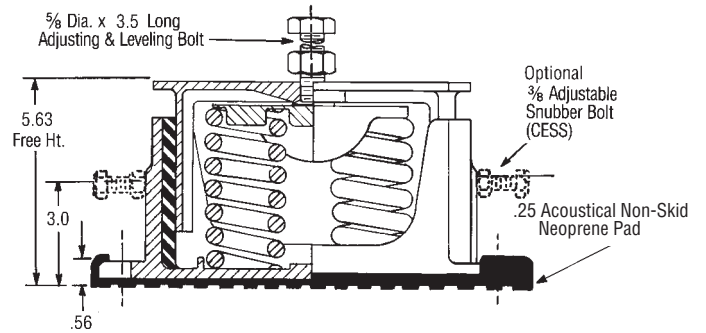
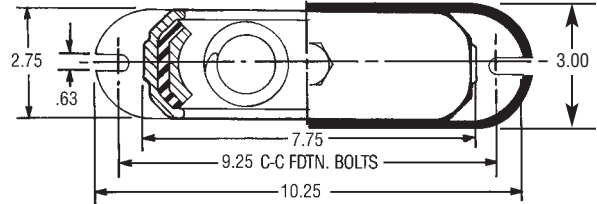
CE-2 Series

Loads/Deflections

| Type & Size | Max. Load | Deflection (inches) | Isolator Constant Pounds/Inch | Spring Color | No. of Springs |
|-------------|-----------|---------------------|-------------------------------|--------------|----------------|
| CE-2-25 | 900 | 1.22 | 736 | RED | TWO |
| CE-2-26 | 1200 | 1.17 | 1026 | PURPLE | |
| CE-2-27 | 1500 | 1.06 | 1414 | ORANGE | |
| CE-2-28 | 1800 | 1.02 | 1762 | GREEN | |
| CE-2-31 | 2200 | .83 | 2654 | GRAY | |
| CE-2-32 | 2600 | .74 | 3516 | WHITE | |
| *CE-2-35 | 3000 | .70 | 4290 | GOLD | |

*Free Height .50 higher than shown in diagram

Note: Series CESS-2 has the same dimensions, loads & deflections as Series CE-2

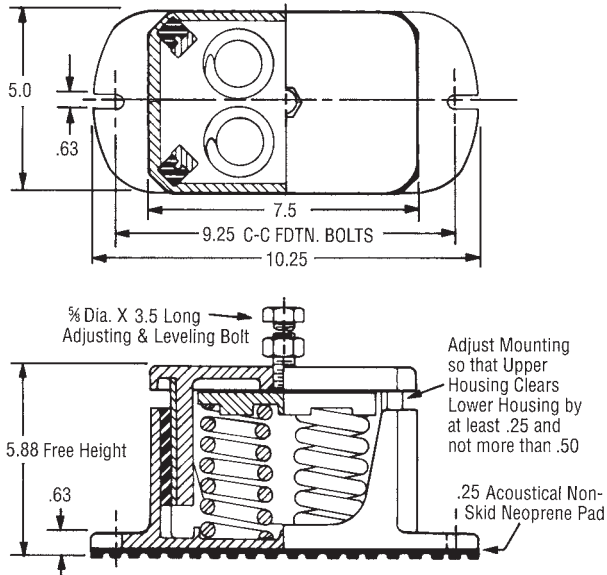


CE-4 Series

Loads/Deflections

| Type & Size | Max. Load | Deflection (inches) | Isolator Constant Pounds/Inch | Spring Color | No. of Springs |
|-------------|-----------|---------------------|-------------------------------|--------------|----------------|
| CE-4-25 | 1800 | 1.22 | 1475 | RED | 4 |
| CE-4-26 | 2400 | 1.17 | 2051 | PURPLE | |
| CE-4-27 | 3000 | 1.06 | 2830 | ORANGE | |
| CE-4-28 | 3600 | 1.02 | 3529 | GREEN | |
| CE-4-31 | 4400 | .83 | 5301 | GRAY | |
| CE-4-32 | 5200 | .74 | 7027 | WHITE | |
| CE-4-35 | 6000 | .70 | 8571 | GOLD | |

*Free Height .50 higher than shown in diagram



CE-7 Series

Loads/Deflections

| Type & Size | Max. Load | Deflection (inches) | Isolator Constant Pounds/Inch | Spring Color | No. of Springs |
|-------------|-----------|---------------------|-------------------------------|--------------|----------------|
| CE-7-25 | 3150 | 1.22 | 2581 | RED | 7 |
| CE-7-26 | 4200 | 1.17 | 3589 | PURPLE | |
| CE-7-27 | 5250 | 1.06 | 4592 | ORANGE | |
| CE-7-28 | 6300 | 1.02 | 6176 | GREEN | |
| CE-7-31 | 7700 | .83 | 9277 | GRAY | |
| CE-7-32 | 9100 | .74 | 12297 | WHITE | |
| CE-7-35 | 10500 | .70 | 15000 | GOLD | |

*Free Height .50 higher than shown in diagram

