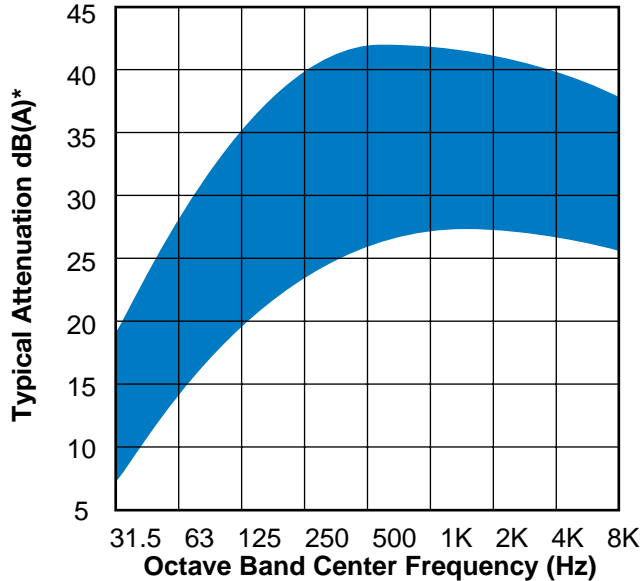


NELSON

Special "400" Level Exhaust Silencers

Typical Attenuation Curve dB(A)*

(ACTUAL ATTENUATION MAY VARY ACCORDING TO APPLICATION)



*Estimated

Application:

These silencers are recommended where ambient noise is low and a high degree of silencing is necessary.

Construction:

Aluminized Steel: Nelson Silencers through 26" O.D. are fabricated of aluminized steel as standard materials. This material has a maximum operating temperature of 1250°F.

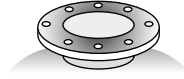
Mild Steel/Aluminized Steel: Nelson Silencers 30" O.D. and larger are fabricated of mild steel and aluminized steel. All silencers 30" O.D. and larger have aluminized steel bodies with all other components fabricated from mild steel.

Silicone Aluminum Paint: Nelson Silencers through 26" O.D. are given a coat of high heat resistant silicone aluminum paint.

Primer/Silicone Aluminum Paint: Nelson Silencers 30" O.D. and larger are given a coat of high heat, rust inhibiting primer and then a topcoat of high heat resistant silicone aluminum paint. Physical properties are maintained up to 900°F* on aluminized steel and 1100°F* on mild steel.

Sample Specification:

The silencer is to be a Nelson Hospital "400" Level Silencer constructed of aluminized steel (26" body diameter and smaller) or mild steel/aluminized steel (larger than 26" body diameter) with all welded construction and suitable for mounting in any position. The silencer shall be complete with the following Nelson accessories:



"F" Mounting Flange:

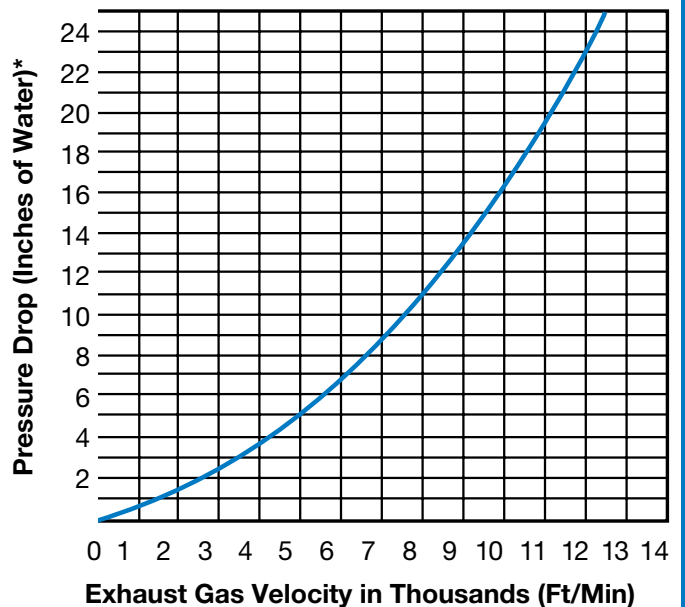
Standard in sizes 4" to 14". Drilling matches 125/150# ASA standard.

Companion flanges available for 4" to 22".

Construction Features:

Double wrapped body is standard on all "400" Level Special Silencers.

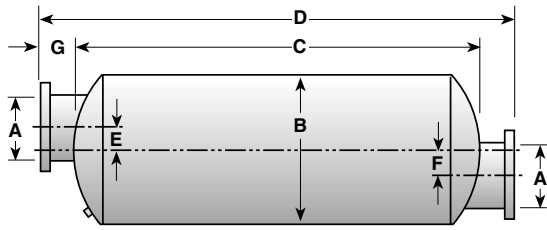
Pressure Drop



Note: When figuring pressure drop for side inlet or middle side inlet add 3" H₂O to back pressure shown on above curve.

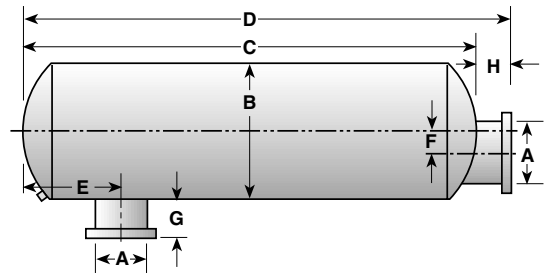
*Estimated

Type 1



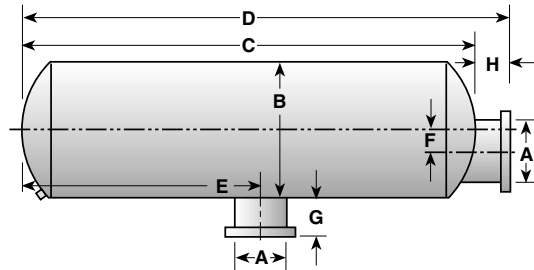
Part Number	A Nominal Inlet Diameter	B Body Dia. O.D.	C Body Length	D Overall Length	E Offset To C/L	F Offset To C/L	G Inlet Length
41440*	4.0	14.1	66.5	72.0	4.0	4.0	2.8
41450*	5.0	16.1	72.4	80.0	4.7	4.7	3.8
41460*	6.0	18.1	82.7	90.0	5.0	5.0	3.7
41480	8.0	26.1	91.7	98.9	0	0	3.6
41482	10.0	30.2	104.8	112.0	0	0	3.4
41484	12.0	36.2	130.6	137.0	0	0	3.2
41486	14.0	42.2	132.2	138.9	0	0	3.4

Type 3



Part Number	A Nominal Inlet Diameter	B Body Dia. O.D.	C Body Length	D Overall Length	E Offset To C/L	F Offset To C/L	G Inlet Length	H Outlet Length
43440	4.0	14.1	66.6	69.3	5.8	4.0	3.0	2.7
43450	5.0	16.1	72.4	77.0	6.0	4.7	4.0	3.8
43460	6.0	18.1	82.6	86.3	6.8	5.0	4.0	3.7
43480	8.0	26.2	91.8	95.5	10.9	0	4.0	3.7
43482	10.0	30.2	104.8	108.4	12.4	0	4.0	3.6
43484	12.0	36.2	130.6	133.8	14.3	0	4.0	3.2
43486	14.0	42.2	132.2	135.6	16.1	0	4.0	3.4

Type 4



Part Number	A Nominal Inlet Diameter	B Body Dia. O.D.	C Body Length	D Overall Length	E Offset To C/L	F Offset To C/L	G Inlet Length	H Outlet Length
44840	4.0	14.1	66.5	69.2	33.3	4.0	3.0	2.7
44850	5.0	16.1	72.4	76.2	36.2	4.7	4.0	3.8
44860	6.0	18.1	82.6	86.3	41.3	5.0	4.0	3.7
44880	8.0	26.2	91.9	95.5	46.0	0	4.0	3.6
44882	10.0	30.2	104.8	108.2	52.4	0	4.0	3.4
44884	12.0	36.2	130.6	133.9	65.3	0	4.0	3.3
44886	14.0	42.2	132.2	135.6	66.1	0	4.0	3.4

* Inlet and outlet offset from centerline of silencer as shown in dimension E and F.

Drains are standard on all silencers with a 9" body diameter or larger.

Note: Specifications are subject to change without notice.

Note: All dimensions are in inches.

