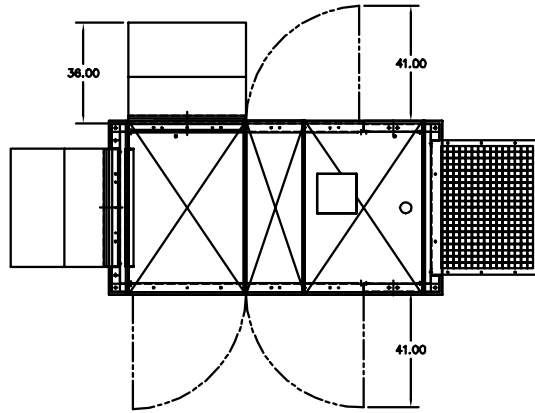


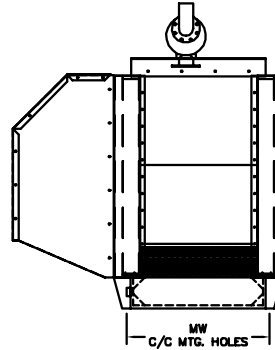
# BALDOR GENERATORS

## GENERAL INSTALLATION FOR IDLC GENERATORS

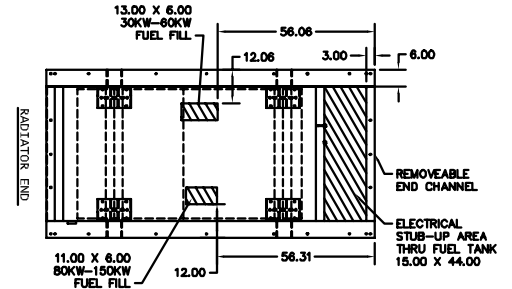
UL2200 MODEL #	MODEL #	OVERALL LENGTH L	OVERALL WIDTH W	OVERALL HEIGHT H	HOOD LENGTH HL	BASE WIDTH BW	MOUNTING HOLE 1 M1	MOUNTING HOLE 2 M2	MOUNTING WIDTH MW	TANK HEIGHT TH (12-17 HRS)	TANK HEIGHT TH (24-34 HRS)	TANK HEIGHT TH (FRAME ONLY)
IDLC30-3J	IDLC30-3J	168	96	82	36	54	18.00	62.00	51.00	8	14	8
IDLC40-3J	IDLC40-3J			94				74.00				
IDLC50-3J	IDLC50-3J			96				82.00				
IDLC60-3J	IDLC60-3J	189	96	94	36	54	22.00	82.00	51.00	11	14	8
IDLC80-3J	IDLC80-3J			94				94.00				
IDLC100-3J	IDLC100-3J			96				94.00				
IDLC125-3J	IDLC125-3J											
IDLC150-3J	IDLC150-3J											



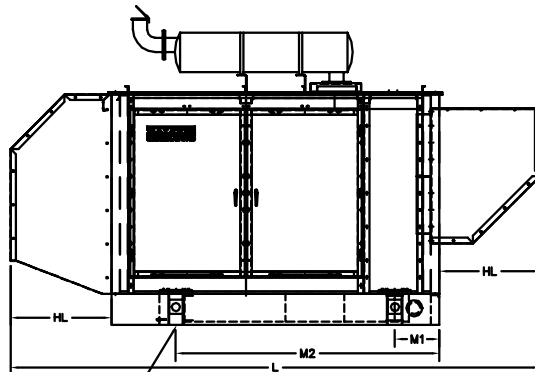
PLAN VIEW



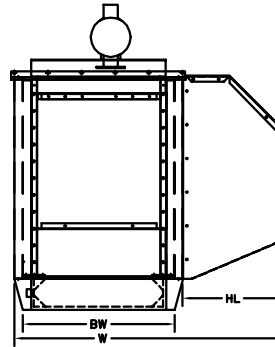
REAR VIEW



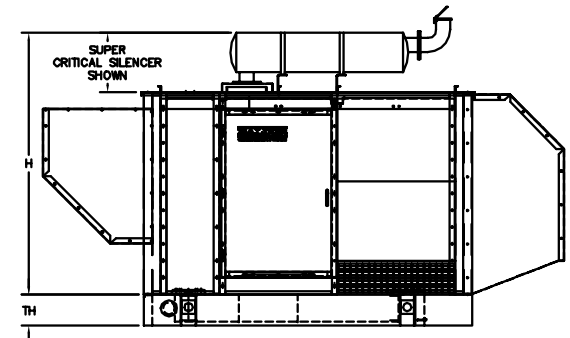
PLAN VIEW OF TANK ONLY



RIGHT SIDE VIEW



FRONT VIEW



LEFT SIDE VIEW

NOTES:

FOR PRODUCT DATA REFER TO BALDOR MODEL SPEC SHEETS

FOR INSTALLATION RECOMMENDATIONS REFER TO GEN SET MANUAL MN2407

ALL DIMENSIONS IN INCHES

DRAWING TO SCALE

TOLERANCES UNLESS OTHERWISE SPECIFIED  
DECIMALS .XX ±.25 FRACTIONS ±1/4

CUSTOMER IS RESPONSIBLE FOR DETERMINING THAT BALDOR'S PRODUCT WILL PERFORM SUITABLY IN THE INTENDED APPLICATION.

REV. DESC: UPDATE TIER ON 30-60	VERSION: 06	TDR: 000000528793
REV. LTR: F	REVISED: 08:30:07 03/09/2010	BY: PGCONBO
FILE: \PGA\00010\468	MTL: -	TAB: SA_L2_30_150

**BALDOR • DODGE • RELIANCE**

IDLC 30-500-07E

SH 12 of 12