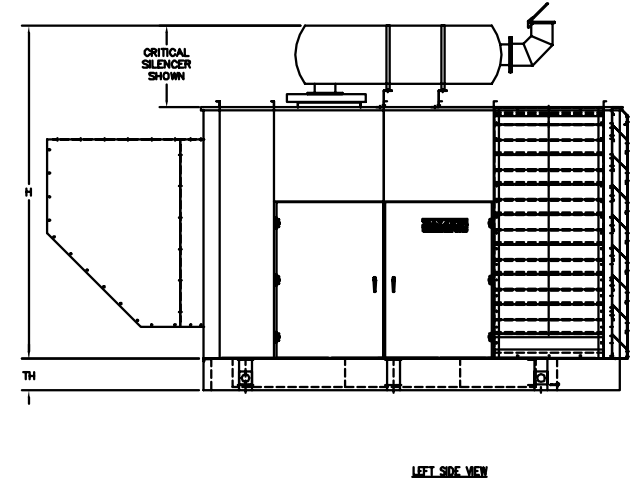
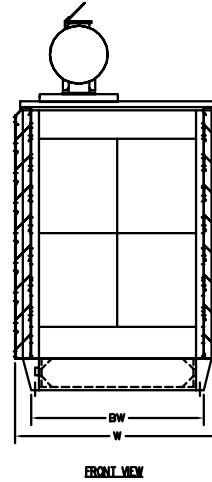
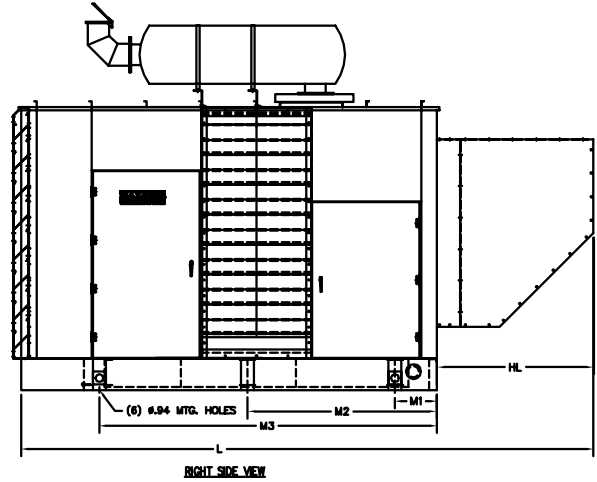
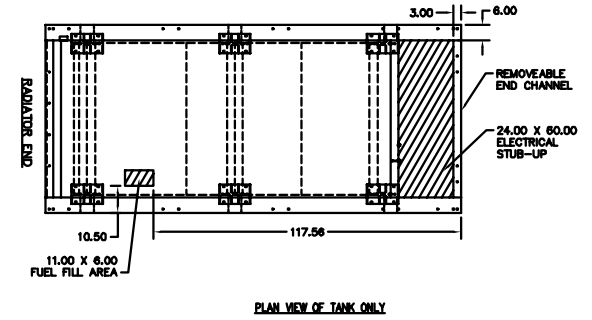
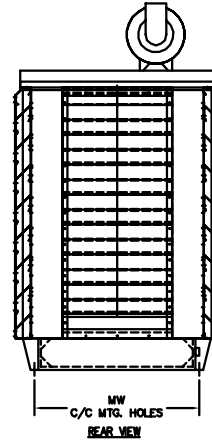
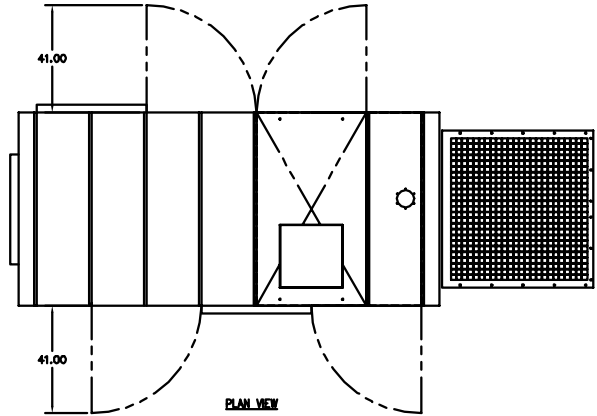


BALDOR GENERATORS

GENERAL INSTALLATION FOR IDLC GENERATORS

UL2200 MODEL #	MODEL #	OVERALL LENGTH L	OVERALL WIDTH W	OVERALL HEIGHT H	HOOD LENGTH HL	BASE WIDTH BW	MOUNTING HOLE 1 M1	MOUNTING HOLE 2 M2	MOUNTING HOLE 3 M3	MOUNTING WIDTH MW	TANK HEIGHT TH (12-17 HRS)	TANK HEIGHT TH (24-34 HRS)	TANK HEIGHT TH (FRAME ONLY)
IDLC300-3JU	IDLC300-3J	213	78	126	54	66	16.00	72.50	129.00	63.00	14	24	6
IDLC300-3DU	IDLC300-3D			132									
IDLC350-3DU	IDLC350-3D			138									
IDLC350-3JU	IDLC350-3J	219	78	138	60	66	16.00	72.50	129.00	63.00	14	24	6
IDLC400-3DU	IDLC400-3D			132									
IDLC450-3DU	IDLC450-3D			138									
IDLC500-2DU	IDLC500-2D												



NOTES:

FOR PRODUCT DATA REFER TO
BALDOR MODEL SPEC SHEETS

FOR INSTALLATION RECOMMENDATIONS
REFER TO GEN SET MANUAL MN2407

ALL DIMENSIONS IN INCHES

DRAWING TO SCALE

TOLERANCES UNLESS OTHERWISE SPECIFIED
DECIMALS .XX ±.25 FRACTIONS ±1/4

CUSTOMER IS RESPONSIBLE FOR DETERMINING THAT BALDOR'S PRODUCT WILL PERFORM SUITABLY IN THE INTENDED APPLICATION.

REV. DESC: UPDATE TIER ON 30-60	VERSION: 06	TDR: 000000528793
REV. LTR: F	REVISED: 08:29:54 03/09/2010	BY: PGCONBO
FILE: \PGA\00010\468	MTL: -	TAB: SA_L1_300_500

BALDOR • DODGE • RELIANCE

IDLC 30-500-07E

SH 8 of 12