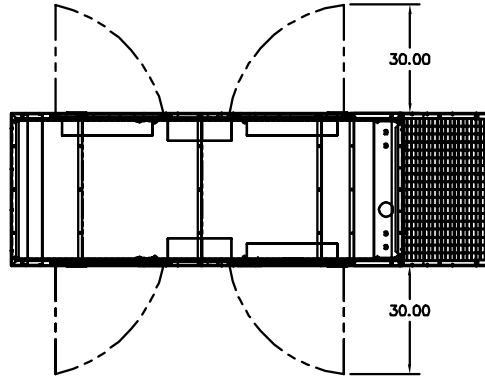


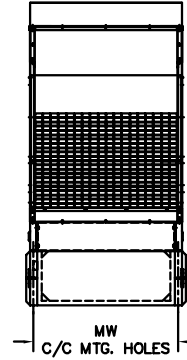
BALDOR GENERATORS

GENERAL INSTALLATION
FOR IDLC GENERATORS

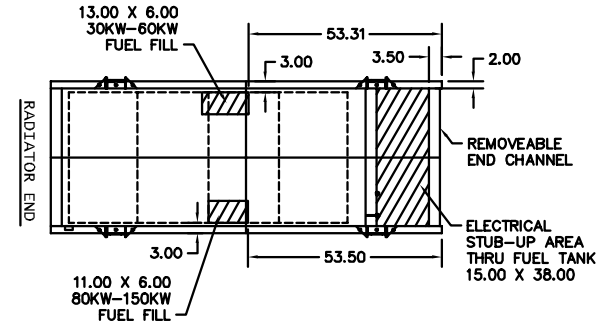
UL2200 MODEL #	MODEL #	OVERALL LENGTH L	OVERALL WIDTH W	OVERALL HEIGHT H	HOOD LENGTH HL	MOUNTING HOLE 1 M1	MOUNTING HOLE 2 M2	MOUNTING WIDTH MW	TANK HEIGHT TH (12-17 HRS)	TANK HEIGHT TH (24-34 HRS)				
IDLC30-3JU	IDLC30-3J	93	42	56	21	14.00	58.00	40.00	8	12				
IDLC40-3JU	IDLC40-3J	105					62		24	18.00	70.00	9	15	
IDLC50-3JU	IDLC50-3J										78.00	12	22	
IDLC60-3JU	IDLC60-3J	132		62	24	18.00	90.00		15	26				
IDLC80-3JU	IDLC80-3J						117		62	24	18.00	90.00	15	26
IDLC100-3JU	IDLC100-3J											90.00	15	26
IDLC125-3JU	IDLC125-3J	132	62	24	18.00	90.00	15	26						
IDLC150-3JU	IDLC150-3J					90.00	15	26						



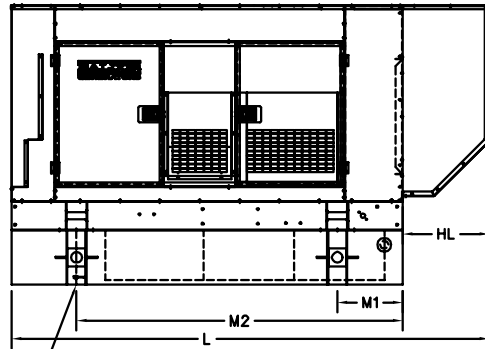
PLAN VIEW



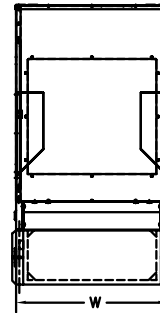
REAR VIEW



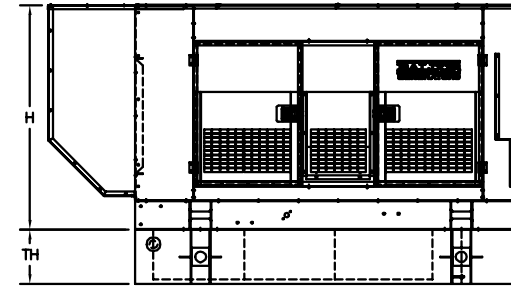
PLAN VIEW OF TANK ONLY



RIGHT SIDE VIEW



FRONT VIEW



LEFT SIDE VIEW

NOTES:

FOR PRODUCT DATA REFER TO
BALDOR MODEL SPEC SHEETS

FOR INSTALLATION RECOMMENDATIONS
REFER TO GEN SET MANUAL MN2407

ALL DIMENSIONS IN INCHES

DRAWING TO SCALE

TOLERANCES UNLESS OTHERWISE SPECIFIED
DECIMALS .XX ±.25 FRACTIONS ±1/4

CUSTOMER IS RESPONSIBLE FOR DETERMINING THAT BALDOR'S PRODUCT WILL PERFORM SUITABLY IN THE INTENDED APPLICATION.

REV. DESC: UPDATE TIER ON 30-60	VERSION: 06	TDR: 000000528793
REV. LTR: F	REVISED: 08:29:48 03/09/2010	BY: PGCONBO
FILE: \PGA\00010\468	MTL: -	TAB: SA_IS_30_150

BALDOR • DODGE • RELIANCE

IDLC 30-500-07E

SH 6 of 12