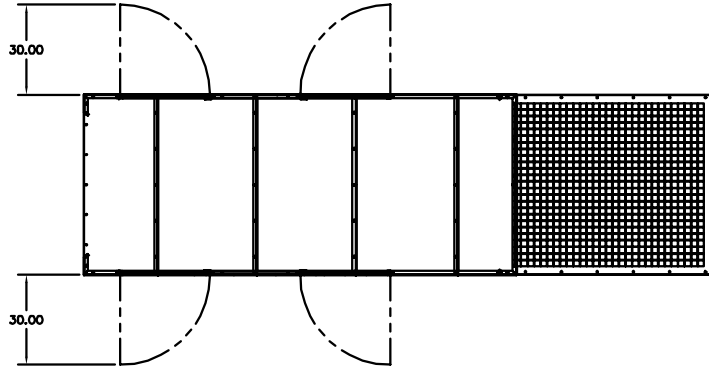


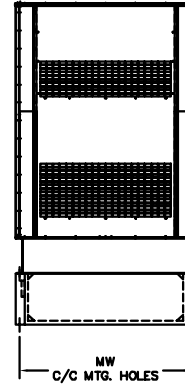
BALDOR GENERATORS

GENERAL INSTALLATION FOR IDLC GENERATORS

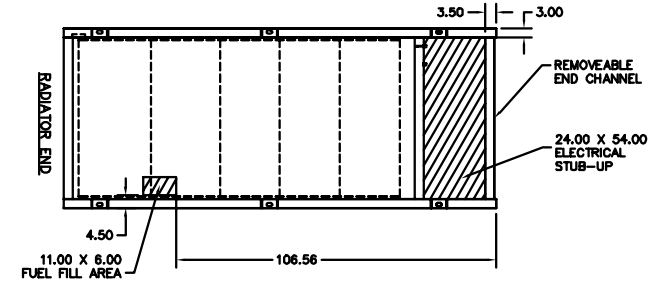
UL2200 MODEL #	MODEL #	OVERALL LENGTH L	OVERALL WIDTH W	OVERALL HEIGHT H	HOOD LENGTH HL	MOUNTING HOLE 1 M1	MOUNTING HOLE 2 M2	MOUNTING HOLE 3 M3	MOUNTING WIDTH MW	TANK HEIGHT TH (12-17 HRS)	TANK HEIGHT TH (24-34 HRS)
IDLC300-3JU	IDLC300-3J	191	60	90	54	12.00	68.50	125.00	57.50	17	31
IDLC300-3DU	IDLC300-3D										
IDLC350-3DU	IDLC350-3D										
IDLC350-3JU	IDLC350-3J	204	60	90	60	12.00	68.50	125.00	57.50	21	38
IDLC400-3DU	IDLC400-3D										
IDLC450-3DU	IDLC450-3D										
IDLC500-2DU	IDLC500-2D										



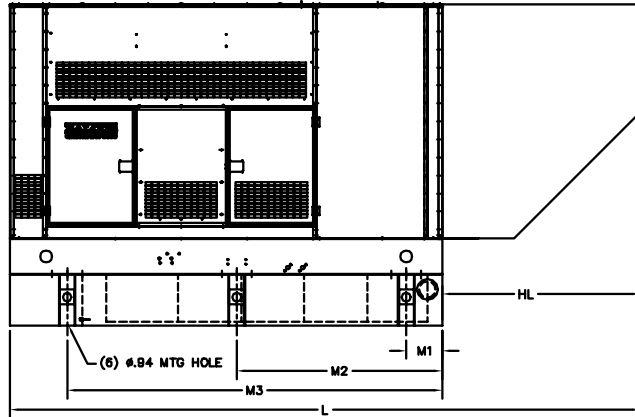
PLAN VIEW



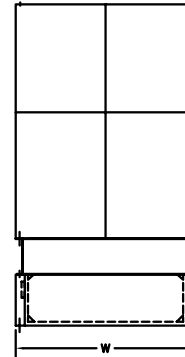
REAR VIEW



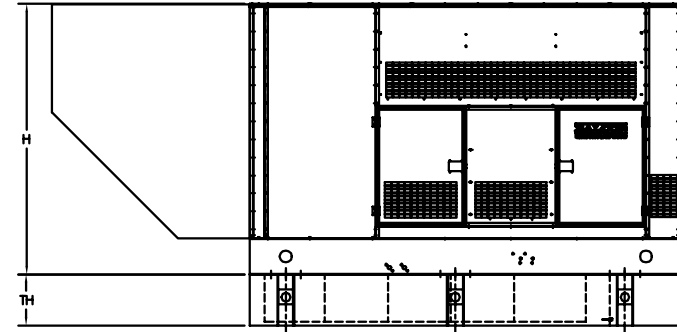
PLAN VIEW OF TANK ONLY



RIGHT SIDE VIEW



FRONT VIEW



LEFT SIDE VIEW

NOTES:

FOR PRODUCT DATA REFER TO
BALDOR MODEL SPEC SHEETS

FOR INSTALLATION RECOMMENDATIONS
REFER TO GEN SET MANUAL MN2407

ALL DIMENSIONS IN INCHES

DRAWING TO SCALE

TOLERANCES UNLESS OTHERWISE SPECIFIED
DECIMALS .XX ±.25 FRACTIONS ±1/4

CUSTOMER IS RESPONSIBLE FOR DETERMINING THAT BALDOR'S PRODUCT WILL PERFORM SUITABLY IN THE INTENDED APPLICATION.

REV. DESC: UPDATE TIER ON 30-60		
REV. LTR: F	VERSION: 06	TDR: 00000528793
FILE: \PGA\00010\468	REVISED: 08:29:45 03/09/2010	BY: PGCONBO
MTL: -	TAB: SA_IS_300_500	

BALDOR • DODGE • RELIANCE

IDLC 30-500-07E

SH 5 of 12