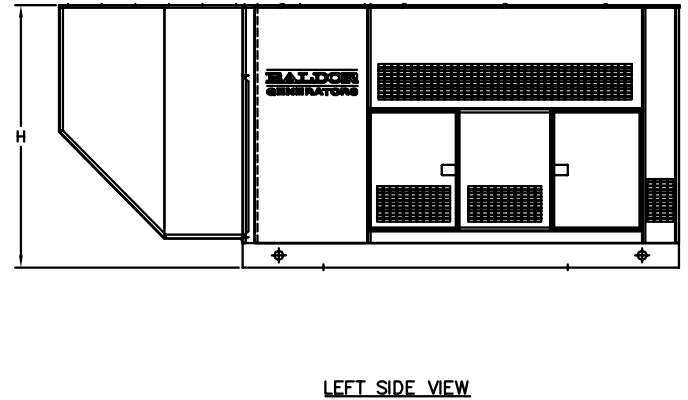
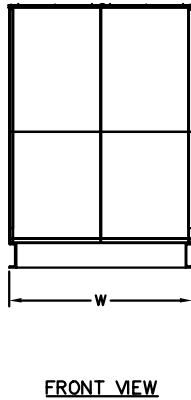
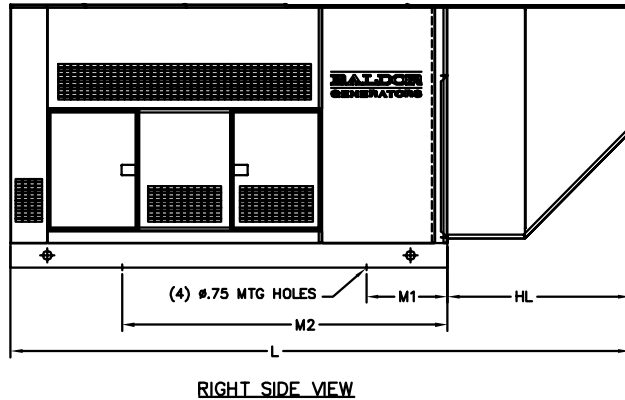
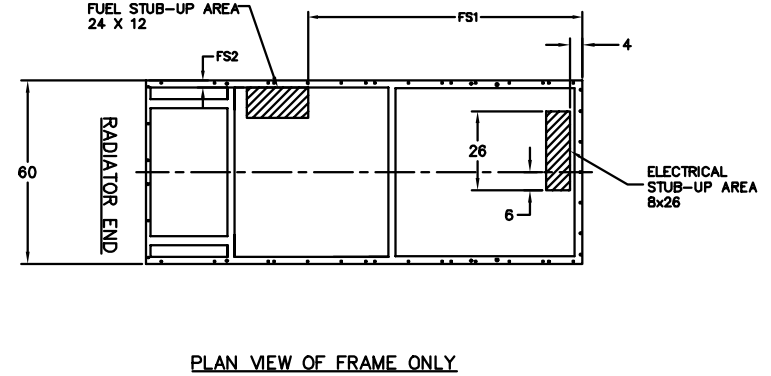
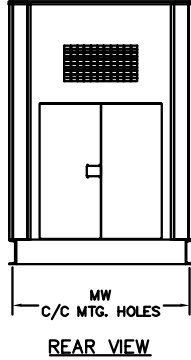
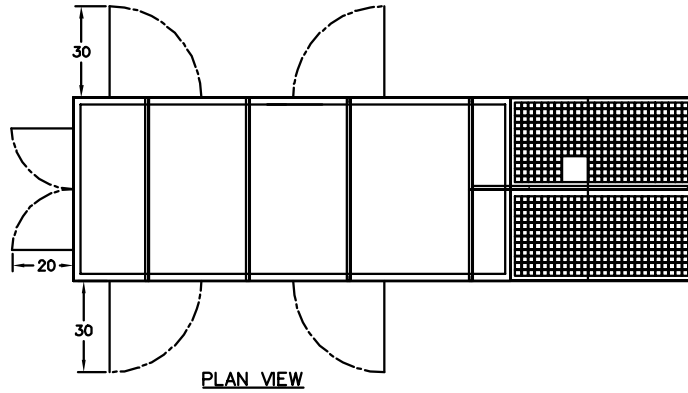


BALDOR GENERATORS

GENERAL INSTALLATION FOR IGLC GENERATORS

MODEL #	OVERALL LENGTH L	OVERALL WIDTH W	OVERALL HEIGHT H	HOOD LENGTH HL	MOUNTING HOLE 1 M1	MOUNTING HOLE 2 M2	MOUNTING HOLE 3 M3	MOUNTING WIDTH MW	FUEL STUB FS1	FUEL STUB FS2
IGLC155-2N	163	48	70	42	18.00	100.00	NA	45.50	37	2.25
IGLC210-2N	191	60	94	60	18.00	113.00	NA	57.50	38	2.25
IGLC280-2N	197	72	94	60	18.00	60.00	112.00	69.50	52	2.60
IGLC350-2N	203	72	103	60	18.00	71.00	125.00	69.50	53	2.60
IGLC420-2N	228	84	103	60	18.00	81.00	144.00	81.50	53	2.60



- NOTES:
1. FOR PRODUCT DATA REFER TO BALDOR MODEL SPEC SHEETS
 2. FOR INSTALLATION RECOMMENDATIONS REFER TO GEN SET MANUAL MN2422
 3. ALL DIMENSIONS IN INCHES
 4. TOLERANCES UNLESS OTHERWISE SPECIFIED DECIMALS .XX ±.25 FRACTIONS ±1/4
 5. STRAINER REDUCES THE FUEL STUB-UP AREA BY 4.5" FOR IGLC 35, 6.5" FOR IGLC 45-75 AND 8.0" FOR IGLC 105-130

CUSTOMER IS RESPONSIBLE FOR DETERMINING THAT BALDOR'S PRODUCT WILL PERFORM SUITABLY IN THE INTENDED APPLICATION.

REV. DESC: ADD BALDOR DECAL		
REV. LTR: A	VERSION: 01	TDR: 00000532804
FILE: \PGA\00016\634	REVISED: 03:44:00 03/16/2010	BY: PGMICBO
MTL: -	SLS: PPA 155-420	

BALDOR

IGLC-155-420-09E
SH 3 of 3