

Document Reference: AN060006VS1

Title: How To Upload/Download parameters using Mint WorkBench

Required Equipment:

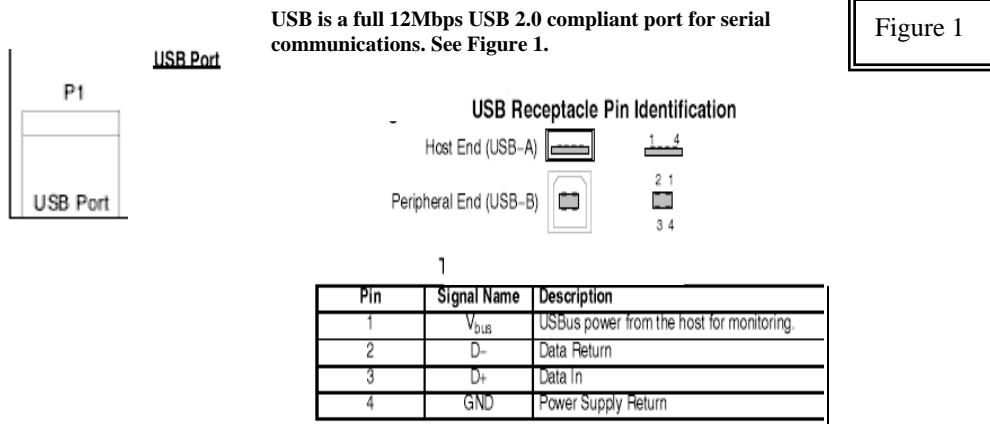
- VS1 Drive Series: VS1SP, VS1GV, or VS1SD
- Host Computer.
- USB Cable.
- Mint WorkBench file and drivers. These can be uploaded from the Internet @ www.baldormotion.com

Introduction:

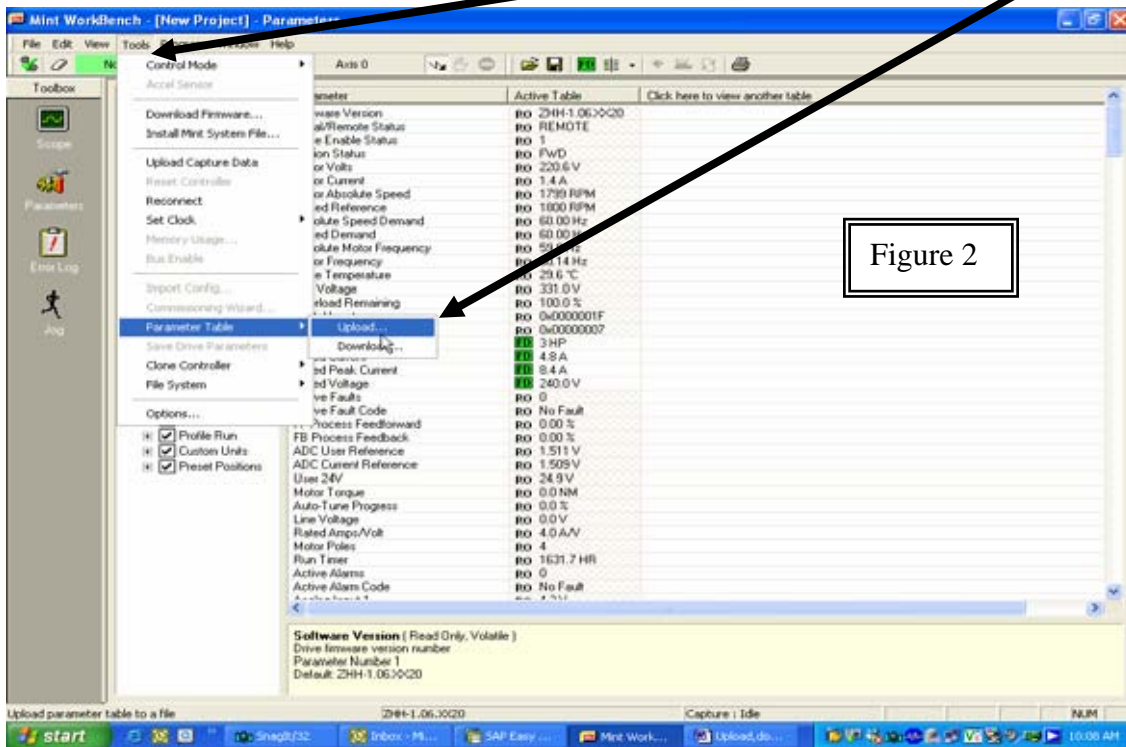
Uploading and downloading files using Workbench is just a matter of a few simple clicks of your mouse. *Uploading* refers to *Saving* parameters and *Downloading* is the method for *Retrieving* them.

Procedure:

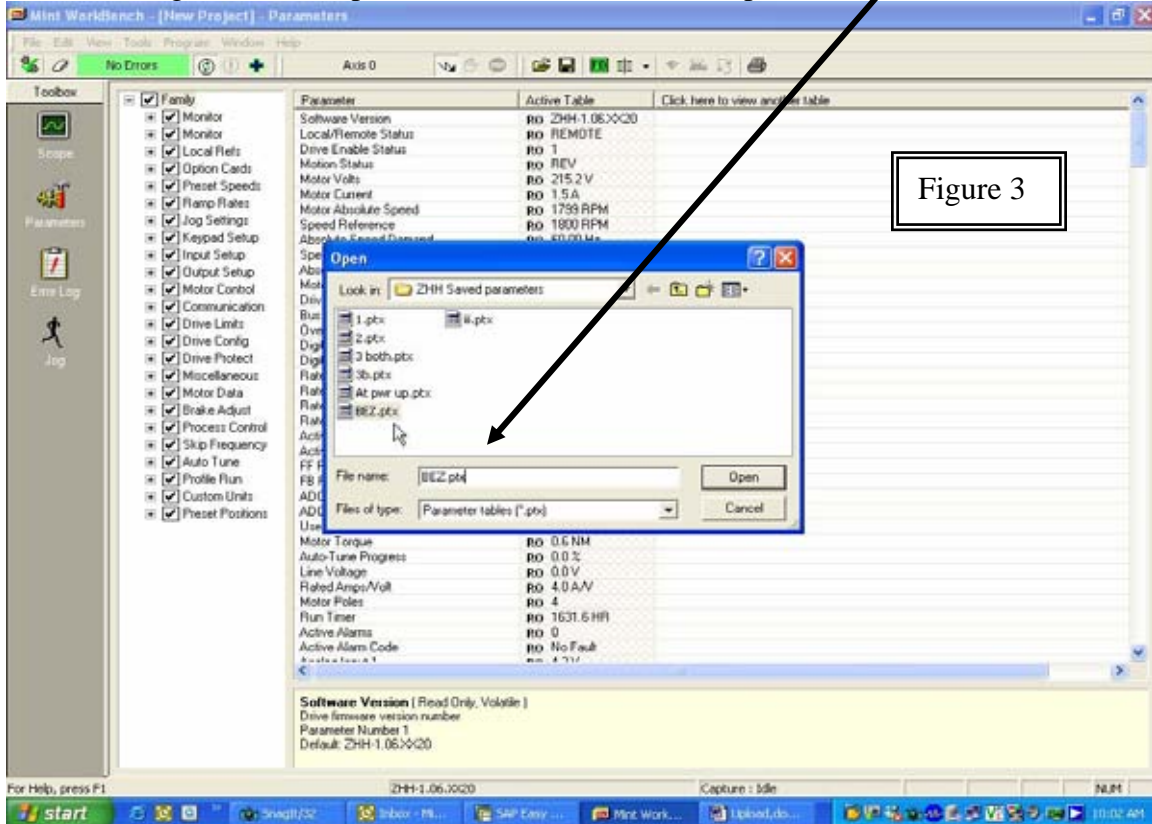
1. Connect the drive and pc with customer supplied USB cable. Figure 1.



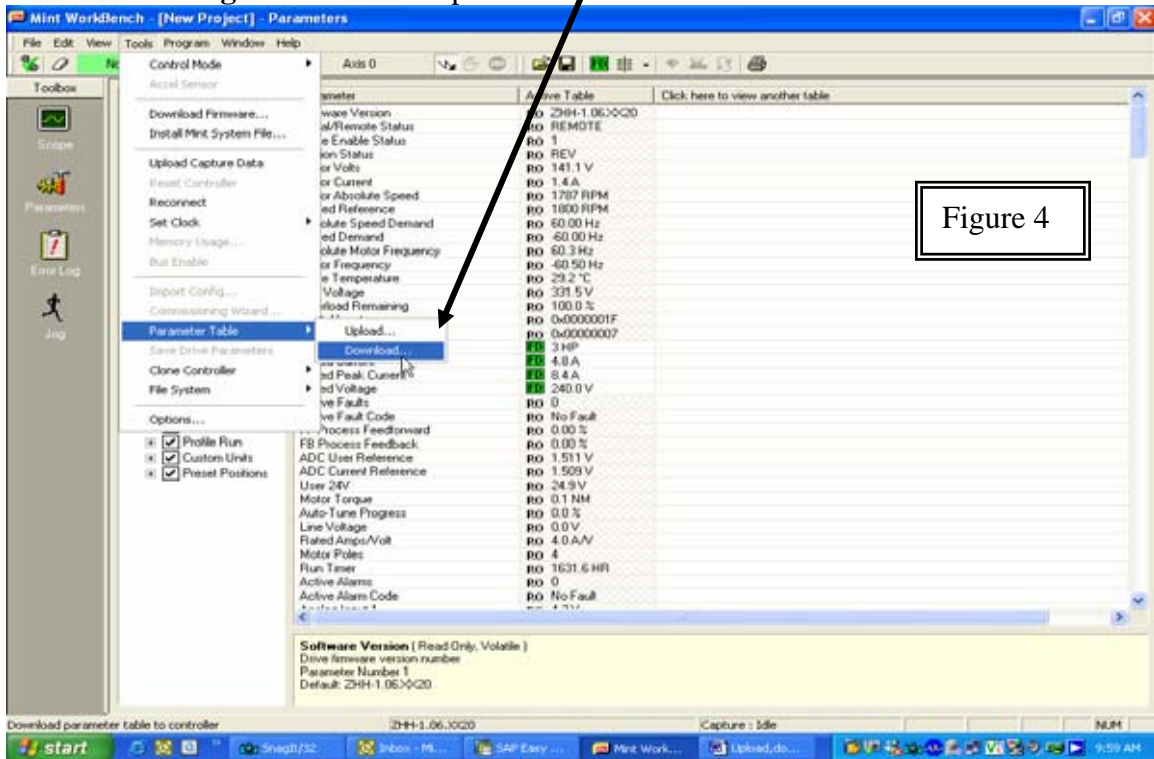
2. Select **Tools** on the Mint WorkBench toolbar>**Parameter Table**>**Upload..**



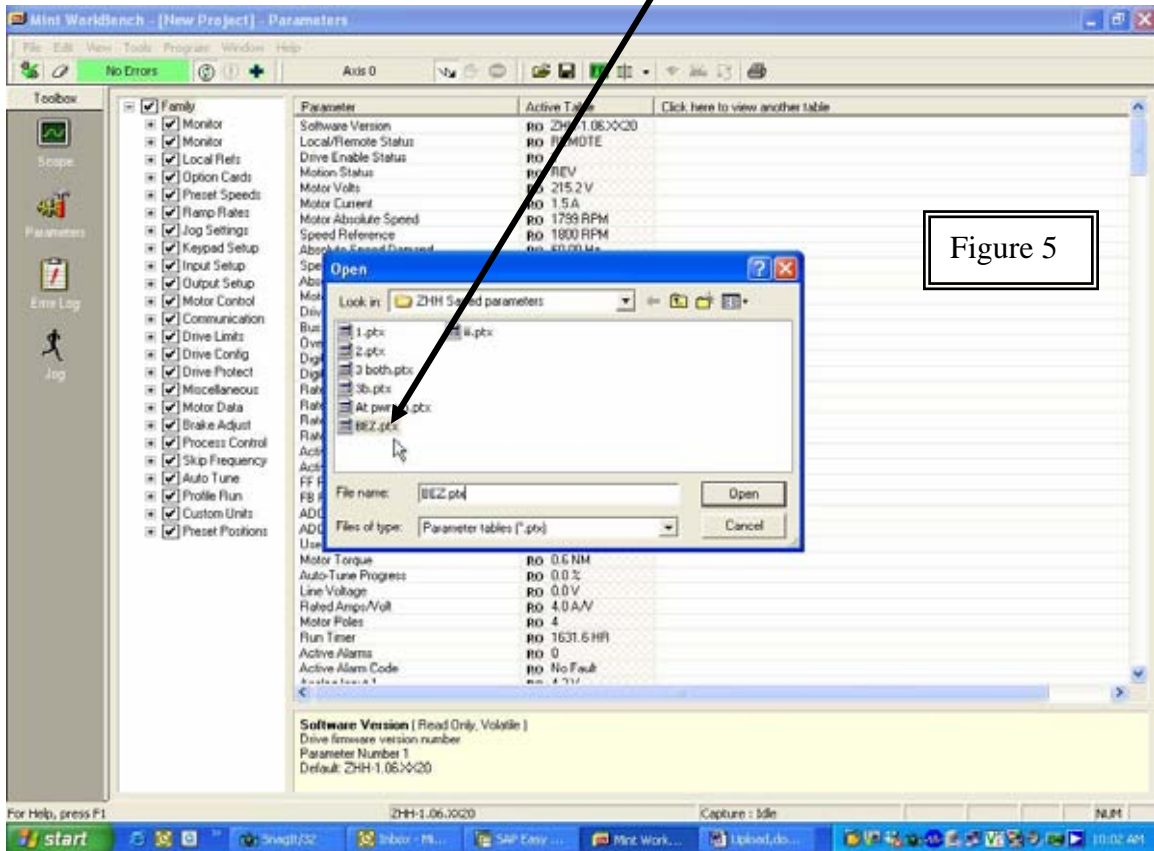
3. Change File name .ptx to another name. For example: **BEZ**



4. Downloading retrieves saved .ptx files



5. Click on file name Download to VS1 control.



Note: When retrieving files insure that the drive is auto-tuned for the new parameter set.