



Document Reference: AN060018VS1

Setting Up VS1 Mint WorkBench

Required Equipment:

Laptop or Desktop Computer

Mint Workbench V5.5

USB A to B Cable

USB Device Driver

Series VS1 Control (VS1SP, VS1GV, & VS1SD)

Introduction:

As an alternative to using the keypad for programming and setup, Baldors Workbench software version 5.5 or greater can be used with VS1 controls. When the software is installed and configured, the help topics provide information for how to use the software. The following procedure will help you install and configure the software to minimize difficulty. Before you can use Workbench software, it must be installed on your PC's hard drive. Be sure that the USB port of the VS1 control is connected to a USB port on your PC. This must be connected to establish communication after the software is installed.

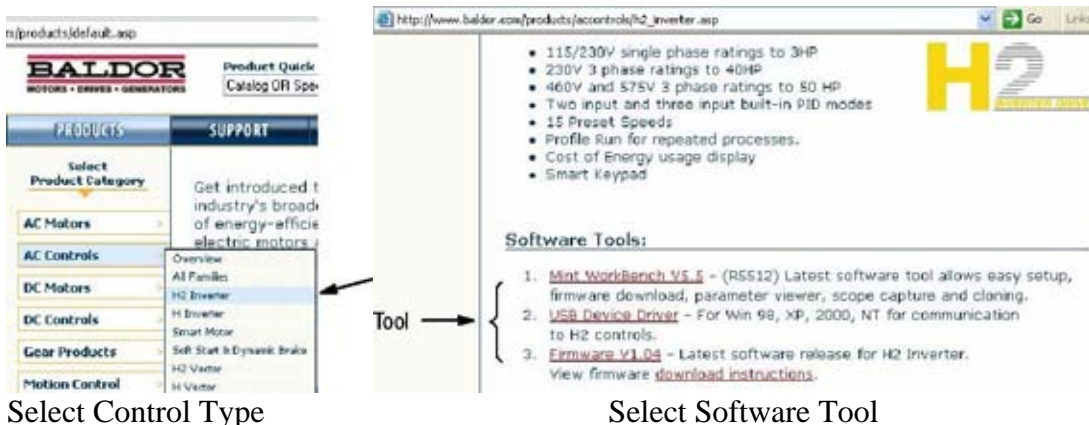
Procedure:

Install USB Driver for VS1 Control

The H2 control connects to a PC by using USB cable connection. Windows requires that the USB drivers for the VS1 control be installed. This procedure installs the USB driver.

1. Download software from the following site: <http://www.baldor.com>
2. Simply log into that web site and select **PRODUCTS => AC Controls => H2 Inverter** to locate the Software tools, as shown in Figure 3-35.

Figure 3-35 USB Device Driver

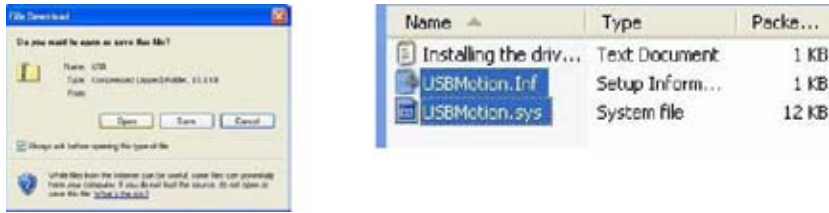


Select Control Type

Select Software Tool

3. Click on USB Device Driver and select Open to view the uncompressed files, as shown in Figure 3-36.

Figure 3-36 USB Device Driver



4. Select the **inf** and **sys** files and copy them to a folder on your hard drive. These will be installed next.
5. Be sure the VS1 control is powered up.
6. Connect the USB cable to the control. Windows should find a new USB device.
7. Install the USB drivers, as shown in Figure 3-37.
 - a. Choose “install from a list or specific location” and click Next.
 - b. Choose “Don’t search I will choose the driver to install”.
 - c. Click “Have Disk”. Then enter the location that you stored the **inf** and **sys** files (in step 3) and click Next to install the driver files.

Figure 3-37 USB Device Driver



8. Proceed to the Workbench installation procedure.

Install Mint Workbench

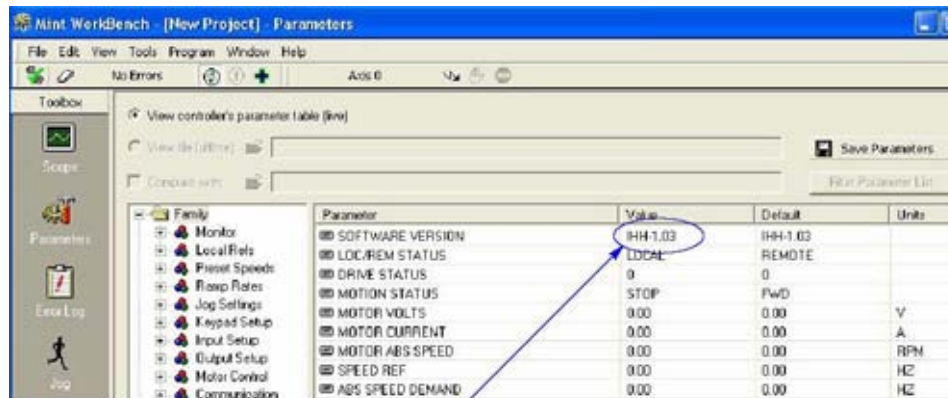
1. Use the Add/Remove Software feature of the Windows control panel and remove previous versions of Workbench software.
2. The software must be downloaded from the Baldor site: <http://www.baldor.com> Simply log into that web site, Figure 3-35, and locate Mint WorkBench v X.x
3. Click on Download the software, and run the installation program.

4. When installation is complete, the Workbench program will start, as shown in Figure 3-38.
 - a. Click “Start New Project”.
 - b. Click “Scan”.
 - c. Select “H2 or VS1” platform from the list.
 - d. Click Select and the workbench main menu is displayed, as shown in Figure 3-39.

Figure 3-38 Workbench Software Start-up



Figure 3-39 Communication Established



Software version is Inverter (IHH) version 1 release 03