

Document Reference: AN060016VS1

Title: Ethernet Connection

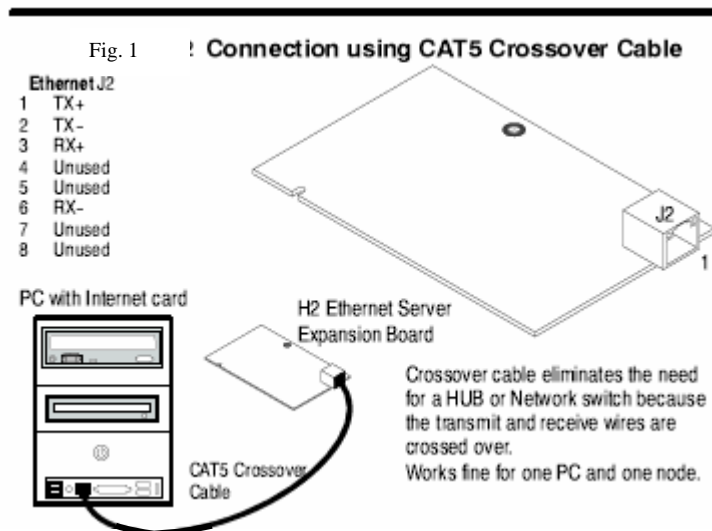
- Required Items:**
- 1) VS1 Drive Series: VS1SP, VS1GV, or VS1SD
 - 2) EXBHH001A01, Ethernet Server Expansion Board
 - 3) Installation and Operating Manual: MN751
 - 4) CAT5 Crossover Cable
 - 5) IP Address//SubNetMask//GateWay #

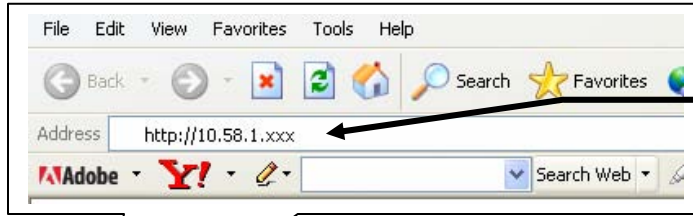
Introduction: Using a Baldor Ethernet Server Expansion Board connection is easy using any PC based Web Browser with Ethernet connectivity. The Ethernet Expansion board will allow the user to view active drive inputs, outputs, speed and other useful information.

This application note will discuss direct connection from a PC with an Internet card to the VS1 drive. For more detailed information and other options refer to the MN751 Ethernet Expansion board manual.

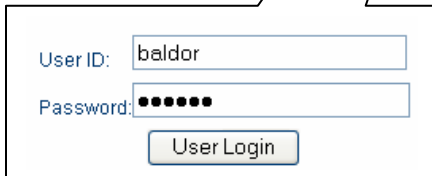
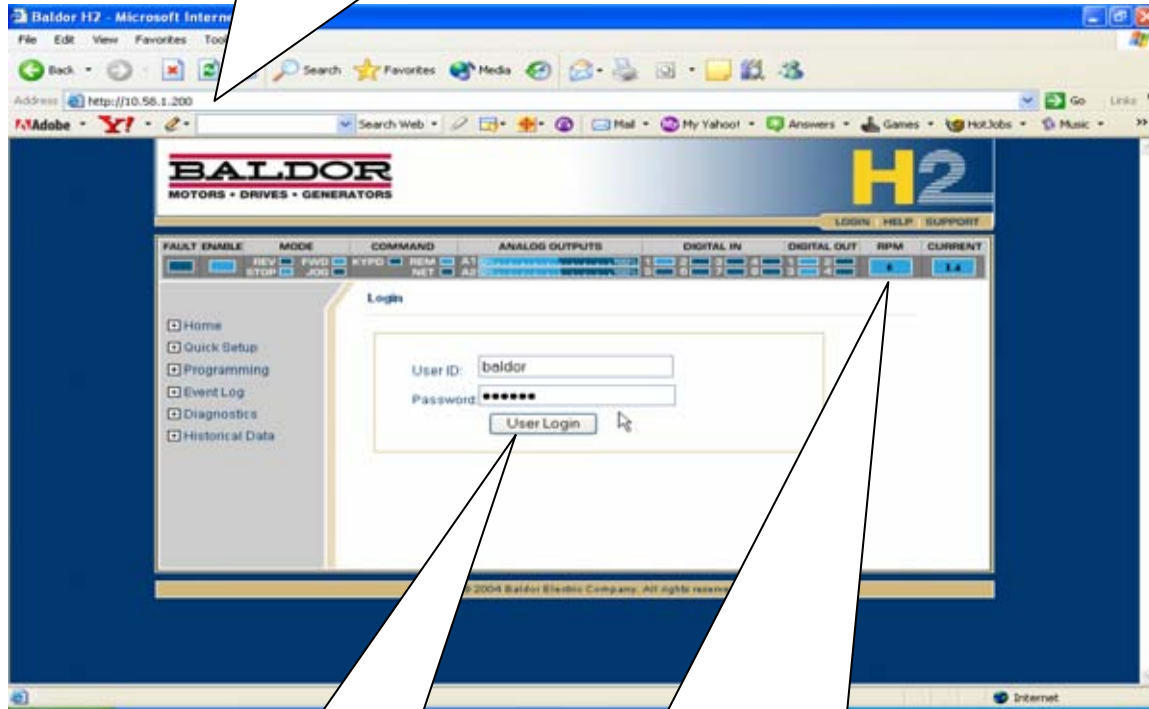
Procedure:

1. Install expansion board in Slot 1 or Slot 2.
2. Connect CAT5 crossover cable





Type in IP address here.
 Program VS1 drive in Level 1:
 COMMUNICATION Block:
 OPT1 IP ADDRESS



DIGITAL IN				DIGITAL OUT				RPM	CURRENT
1	2	3	4	1	2		291	1.4	
5	6	7	8	3	4				

Note:

- Default User ID and Password is “baldor”.
- Parameters are hidden from view until expansion board is installed then perform OPT CARD RESET.
- The local firewall may have to be disabled within your pc in order to allow proper functioning.
- Use the latest version of Build for Mint WorkBench software//firmware and drive software.

Contact Baldor: See Inside back cover: Installation & Operating Manual or download manual from:
www.baldor.com