

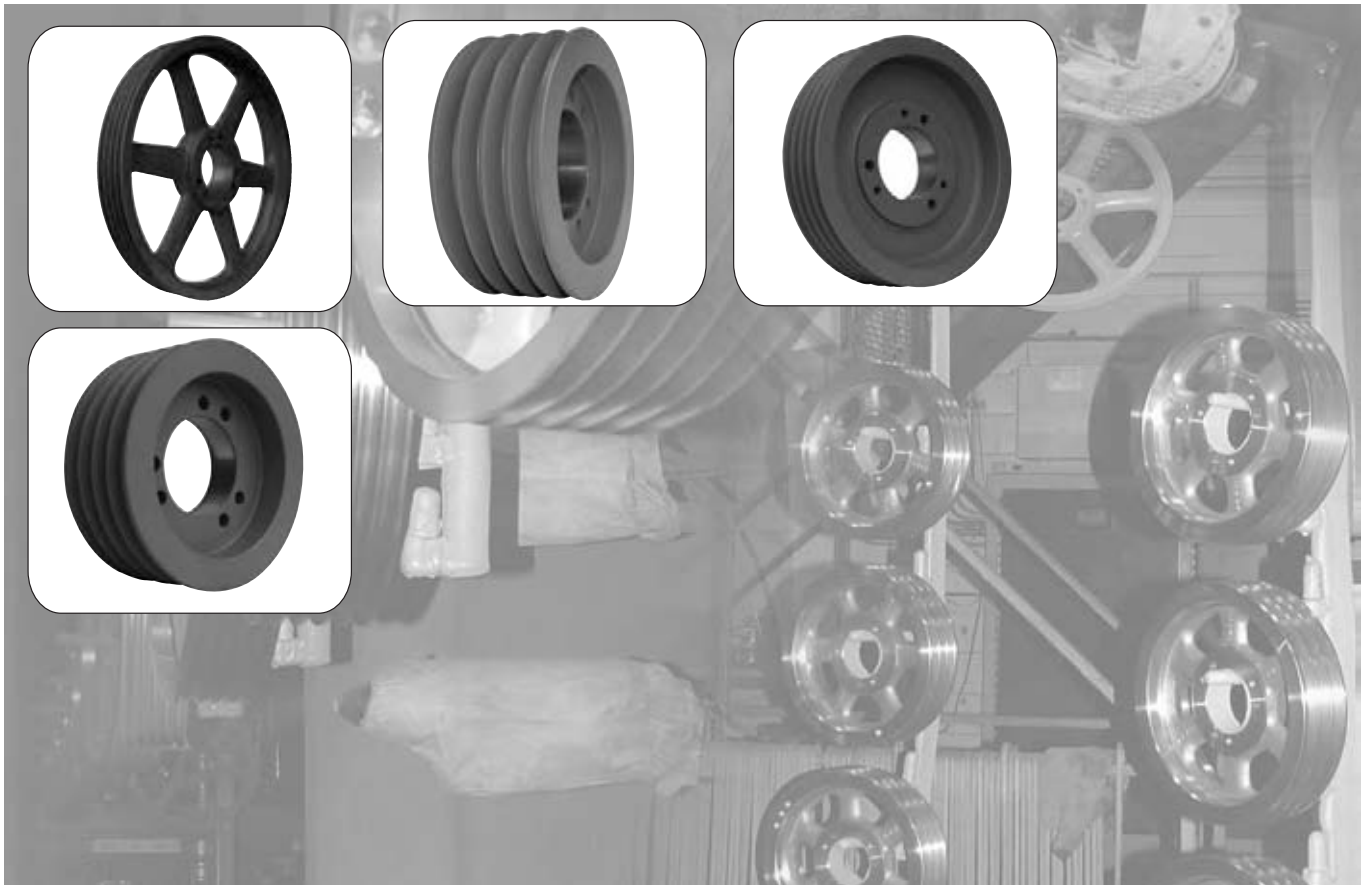
CLASSICAL A/B COMBINATION, C & D

DID YOU KNOW THAT...

- Complete line in stock, including larger models
- Designed for use with QD bushing & corresponding belts
- A/B models from 1-6; 8; 10 grooves; 3.75"-38.35"
- C model from 1-10; 12 grooves; 5.4"-58.6"
- D model from 3-10; 12 grooves; 12.6"-58.6"



SHEAVES



IMPORTANT REMINDER



• **DO NOT** use these gray cast iron sheaves with rim speeds in excess of 6500 feet per minute. Note that the max. RPM indicated on the arm of the sheave is based on the 6500 ft/min. limit, and doesn't take into consideration the need for dynamic balancing (two planes). Please refer to the chart on page 32 to verify the validity of dynamic balancing in your application.

All operational PT products when used in a drive are potentially dangerous and must be guarded by the user as required by applicable laws, regulations, standards and good safety practice. (Refer to ANSI Standard B15.1)

• When ordering a sheave to be dynamically balanced, you must specify the sheave operational speed. Maska recommends ordering the matching bushing with the sheave to ensure a balancing grade of 6.3. If the bushing is not ordered at the same time, a disclaimer will be sent to the customer discharging Maska from possible vibration problems related to the drive.

HOW TO ORDER

EXAMPLE: **6B70**

6

B

70

6: NUMBER OF GROOVES

B: "A/B" COMBINATION SHEAVE SECTION

70: DATUM DIAMETER FOR "B" BELTS (7.0")

NOTE:

- 1 For mounting instructions with QD bushings, see page 11.
- 2 All Charts: The type of sheave construction is indicated in the column entitled « T ». The number refers to the drawing and the letter as follows: A = arms; B = block; W = web.
- 3 "B" Column indicates the corresponding bushing size required.
- 4 All dimensions are to the closest fraction.

"A/B" COMBINATION

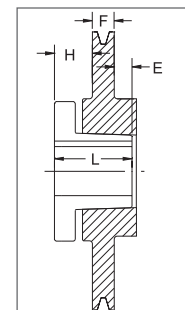
DIMENSIONS 1 GROOVE

Datum dia.		O.D.	Part No	List Price \$	F = 7/8 up to 7.15 O.D. & 1 inch thereafter					
A(4L) Belts	B(5L) Belts				H	Type	B	L	E	Wt
3.0	3.4	3.75	1B34 ¹	26.00	5/8	11B	SH	1 1/4	1/4	1
3.2	3.6	3.95	1B36	27.00	1/2	6B	SH	1 1/4	1/8	1
3.4	3.8	4.15	1B38	28.00	1/2	6B	SH	1 1/4	1/8	2
3.6	4.0	4.35	1B40	29.00	1/2	6B	SH	1 1/4	1/8	2
3.8	4.2	4.55	1B42	30.00	1/2	6B	SH	1 1/4	1/8	2
4.0	4.4	4.75	1B44	31.00	1/2	6B	SH	1 1/4	1/8	2
4.2	4.6	4.95	1B46	32.00	7/16	7B	SDS	1 5/16	0	2
4.4	4.8	5.15	1B48	33.00	7/16	7B	SDS	1 5/16	0	3
4.6	5.0	5.35	1B50	34.00	7/16	7B	SDS	1 5/16	0	3
4.8	5.2	5.55	1B52	35.00	7/16	7B	SDS	1 5/16	0	3
5.0	5.4	5.75	1B54	36.00	7/16	7B	SDS	1 5/16	0	4
5.2	5.6	5.95	1B56	37.00	7/16	7B	SDS	1 5/16	0	4
5.4	5.8	6.15	1B58	38.00	7/16	7B	SDS	1 5/16	0	4
5.6	6.0	6.35	1B60	40.00	7/16	7B	SDS	1 5/16	0	5
5.8	6.2	6.55	1B62	42.00	7/16	7B	SDS	1 5/16	0	5
6.0	6.4	6.75	1B64	44.00	7/16	7B	SDS	1 5/16	0	6
6.2	6.6	6.95	1B66	48.00	7/16	7B	SDS	1 5/16	0	6
6.4	6.8	7.15	1B68	50.00	7/16	7B	SDS	1 5/16	0	6
6.6	7.0	7.35	1B70	52.00	9/16	6A	SDS	1 5/16	1/4	6
7.0	7.4	7.75	1B74	56.00	9/16	6A	SDS	1 5/16	1/4	6
7.6	8.0	8.35	1B80	58.00	9/16	6A	SDS	1 5/16	1/4	7
8.2	8.6	8.95	1B86	62.00	9/16	6A	SDS	1 5/16	1/4	8
8.6	9.0	9.35	1B90	63.00	9/16	6A	SDS	1 5/16	1/4	9
9.0	9.4	9.75	1B94	64.00	9/16	6A	SDS	1 5/16	1/4	9
10.6	11.0	11.35	1B110	76.00	9/16	6A	SDS	1 5/16	1/4	11
12.0	12.4	12.75	1B124	90.00	9/16	6A	SDS	1 5/16	1/4	12
13.2	13.6	13.95	1B136	96.00	9/16	6A	SDS	1 5/16	1/4	13
15.0	15.4	15.75	1B154	116.00	11/16	5A	SK	1 7/8	3/16	20
15.6	16.0	16.35	1B160	136.00	7/8	3A	SK	1 7/8	0	22
18.0	18.4	18.75	1B184	156.00	15/16	10A	SK	1 7/8	1/16	28
19.6	20.0	20.35	1B200	230.00	13/16	5A	SK	1 7/8	1/16	30
24.6	25.0	25.35	1B250	350.00	15/16	10A	SK	1 7/8	1/16	40

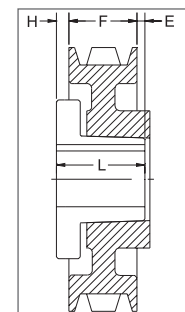
P.D. for "A" (4L) Belts = Datum Dia. + .35" = O.D. - .40

P.D. for "B" (5L) Belts = O.D.

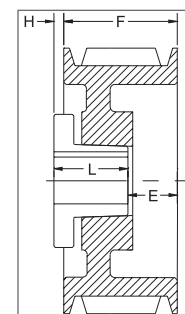
¹ Reverse mount only.



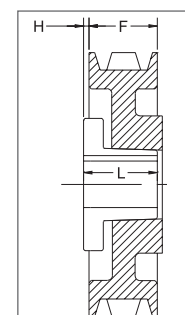
TYPE 3



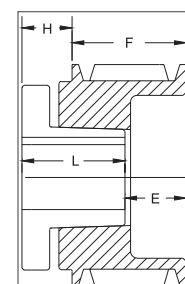
TYPE 5



TYPE 6



TYPE 7

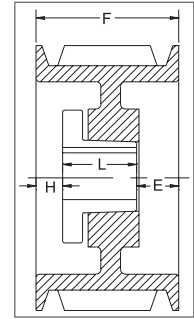


TYPE 10

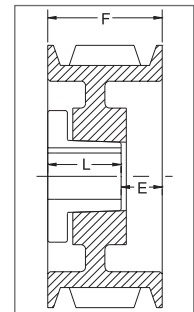
“A/B” COMBINATION

DIMENSIONS 2 GROOVES

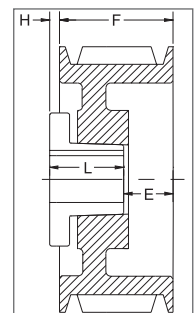
Datum dia.		O.D.	Part No	List Price \$	F = 1 3/4 inches					
A(4L) Belts	B(5L) Belts				H	Type	B	L	E	Wt
3.0	3.4	3.75	2B34^{1*}	38.00	5/8	11B	SH	1 1/4	1 1/8	2
3.2	3.6	3.95	2B36²	40.00	15/32	6B	SH	1 1/4	31/32	3
3.4	3.8	4.15	2B38²	42.00	15/32	6B	SH	1 1/4	31/32	3
3.6	4.0	4.35	2B40²	44.00	15/32	6B	SH	1 1/4	31/32	3
3.8	4.2	4.55	2B42^{2*}	46.00	1/16	1B	SH	1 1/4	7/16	3
4.0	4.4	4.75	2B44	48.00	1/16	1B	SH	1 1/4	7/16	4
4.2	4.6	4.95	2B46^{2*}	50.00	0	4B	SDS	1 5/16	7/16	4
4.4	4.8	5.15	2B48	52.00	0	4B	SDS	1 5/16	7/16	4
4.6	5.0	5.35	2B50	54.00	0	4B	SDS	1 5/16	7/16	5
4.8	5.2	5.55	2B52	56.00	0	4B	SDS	1 5/16	7/16	5
5.0	5.4	5.75	2B54	58.00	0	4B	SDS	1 5/16	7/16	6
5.2	5.6	5.95	2B56	60.00	0	4B	SDS	1 5/16	7/16	6
5.4	5.8	6.15	2B58	62.00	0	4W	SDS	1 5/16	7/16	6
5.6	6.0	6.35	2B60	64.00	0	4W	SDS	1 5/16	7/16	6
5.8	6.2	6.55	2B62	66.00	0	4W	SDS	1 5/16	7/16	7
6.0	6.4	6.75	2B64	68.00	0	4W	SDS	1 5/16	7/16	7
6.2	6.6	6.95	2B66	69.00	0	4W	SDS	1 5/16	7/16	8
6.4	6.8	7.15	2B68	71.00	0	4W	SDS	1 5/16	7/16	8
6.6	7.0	7.35	2B70	72.00	3/8	6W	SK	1 7/8	1/4	9
7.0	7.4	7.75	2B74	73.00	3/8	6W	SK	1 7/8	1/4	10
7.6	8.0	8.35	2B80	74.00	3/8	6W	SK	1 7/8	1/4	11
8.2	8.6	8.95	2B86	76.00	3/8	6A	SK	1 7/8	1/4	12
8.6	9.0	9.35	2B90	77.00	3/8	6A	SK	1 7/8	1/4	12
9.0	9.4	9.75	2B94	78.00	3/8	6A	SK	1 7/8	1/4	13
10.6	11.0	11.35	2B110	92.00	3/8	6A	SK	1 7/8	1/4	15
12.0	12.4	12.75	2B124	100.00	9/16	6A	SK	1 7/8	7/16	18
13.2	13.6	13.95	2B136	120.00	3/8	6A	SK	1 7/8	1/4	24
15.0	15.4	15.75	2B154	168.00	3/8	6A	SK	1 7/8	1/4	25
15.6	16.0	16.35	2B160	178.00	3/8	6A	SK	1 7/8	1/4	27.4
18.0	18.4	18.75	2B184	224.00	3/8	6A	SK	1 7/8	1/4	38
19.6	20.0	20.35	2B200	260.00	11/16	6A	SF	2	7/16	47
24.6	25.0	25.35	2B250	396.00	3/8	6A	SF	2	1/8	60
29.6	30.0	30.35	2B300	440.00	7/16	6A	SF	2	3/16	75
37.6	38.0	38.35	2B380	840.00	11/32	6A	SF	2	3/32	100



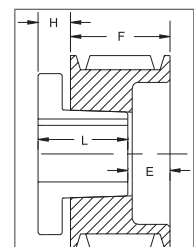
TYPE 1



TYPE 4



TYPE 6



TYPE 11

SHEAVES

P.D. for “A” (4L) Belts = Datum Dia. + .35” = O.D. - .40

P.D. for “B” (5L) Belts = O.D.

¹ Reverse mount only.

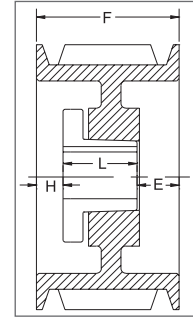
² This sheave can only be reverse mounted with standard bushing bolts. Specials bolts (not provided by Maska) are required for standard mount. (see page 11)

* Mounting bolts are supplied by Maska with this sheave.

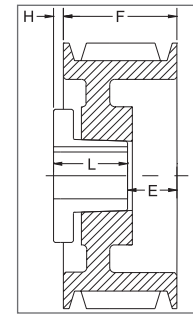
“A/B” COMBINATION

DIMENSIONS 3 GROOVES

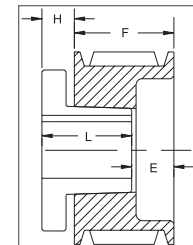
Datum dia.		O.D.	Part No	List Price \$	F = 2 1/2 inches					
“A” Belts	“B” Belts				H	Type	B	L	E	Wt
3.0	3.4	3.75	3B34^{1*}	44.00	5/8	11B	SH	1 1/4	1 7/8	3
3.2	3.6	3.95	3B36¹	46.00	1/2	6B	SH	1 1/4	1 3/4	4
3.4	3.8	4.15	3B38¹	48.00	1/2	6B	SH	1 1/4	1 3/4	4
3.6	4.0	4.35	3B40¹	50.00	5/8	11B	SH	1 1/4	1 7/8	4
3.8	4.2	4.55	3B42[*]	52.00	7/16	1B	SH	1 1/4	13/16	4
4.0	4.4	4.75	3B44	54.00	7/16	1B	SH	1 1/4	13/16	5
4.2	4.6	4.95	3B46[*]	56.00	3/8	1B	SD	1 13/16	5/16	5
4.4	4.8	5.15	3B48	58.00	3/8	1B	SD	1 13/16	5/16	6
4.6	5.0	5.35	3B50	60.00	3/8	1B	SD	1 13/16	5/16	7
4.8	5.2	5.55	3B52	62.00	3/8	1B	SD	1 13/16	5/16	7
5.0	5.4	5.75	3B54	64.00	3/8	1B	SD	1 13/16	5/16	8
5.2	5.6	5.95	3B56	66.00	3/8	1B	SD	1 13/16	5/16	9
5.4	5.8	6.15	3B58	68.00	3/8	1W	SD	1 13/16	5/16	9
5.6	6.0	6.35	3B60	70.00	3/8	1W	SD	1 13/16	5/16	10
5.8	6.2	6.55	3B62	72.00	3/8	1W	SD	1 13/16	5/16	10
6.0	6.4	6.75	3B64	76.00	3/8	1W	SD	1 13/16	5/16	10
6.2	6.6	6.95	3B66	78.00	3/8	1W	SD	1 13/16	5/16	10
6.4	6.8	7.15	3B68	80.00	3/8	1W	SD	1 13/16	5/16	11
6.6	7.0	7.35	3B70	82.00	1/8	6W	SK	1 7/8	3/4	12
7.0	7.4	7.75	3B74	84.00	1/8	6W	SK	1 7/8	3/4	12
7.6	8.0	8.35	3B80	88.00	1/8	6W	SK	1 7/8	3/4	13
8.2	8.6	8.95	3B86	96.00	1/8	6A	SK	1 7/8	3/4	14
8.6	9.0	9.35	3B90	100.00	1/8	6A	SK	1 7/8	3/4	15
9.0	9.4	9.75	3B94	104.00	1/8	6A	SK	1 7/8	3/4	17
10.6	11.0	11.35	3B110	124.00	1/8	6A	SK	1 7/8	3/4	21
12.0	12.4	12.75	3B124	144.00	1/8	6A	SK	1 7/8	3/4	25
13.2	13.6	13.95	3B136	156.00	1/8	6A	SK	1 7/8	3/4	28
15.0	15.4	15.75	3B154	200.00	1/8	6A	SK	1 7/8	3/4	30
15.6	16.0	16.35	3B160	212.00	1/8	6A	SK	1 7/8	3/4	32
18.0	18.4	18.75	3B184	244.00	1/8	6A	SK	1 7/8	3/4	41
19.6	20.0	20.35	3B200	324.00	3/16	6A	SF	2	11/16	55.6
24.6	25.0	25.35	3B250	440.00	3/16	6A	SF	2	11/16	76.1
29.6	30.0	30.35	3B300	500.00	3/16	6A	SF	2	11/16	96
37.6	38.0	38.35	3B380	880.00	3/8	6A	E	2 5/8	1/4	145



TYPE 1



TYPE 6



TYPE 11



P.D. for “A” (4L) Belts = Datum Dia. + .35” = O.D. - .40

P.D. for “B” (5L) Belts = O.D.

¹ Reverse mount only.

* Mounting bolts are supplied by Maska with this sheave.

"A/B" COMBINATION

DIMENSIONS 4 GROOVES

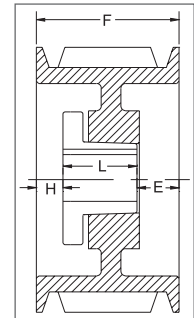
Datum dia.		O.D.	Part No	List Price \$	F = 3 1/4 inches					
"A" Belts	"B" Belts				H	Type	B	L	E	Wt
3.0	3.4	3.75	4B34*	64.00	1	10B	SD	1 13/16	2 7/16	4
3.2	3.6	3.95	4B36*	66.00	1	10B	SD	1 13/16	2 7/16	5
3.4	3.8	4.15	4B38*	68.00	1	10B	SD	1 13/16	2 7/16	6
3.6	4.0	4.35	4B40*	70.00	11/16	11B	SD	1 13/16	2 1/8	5
3.8	4.2	4.55	4B42*	72.00	11/16	11B	SD	1 13/16	2 1/8	6
4.0	4.4	4.75	4B44*	74.00	11/16	11B	SD	1 13/16	2 1/8	6
4.2	4.6	4.95	4B46*	76.00	5/8	1B	SD	1 13/16	13/16	7
4.4	4.8	5.15	4B48	78.00	5/8	1B	SD	1 13/16	13/16	8
4.6	5.0	5.35	4B50	80.00	5/8	1B	SD	1 13/16	13/16	8
4.8	5.2	5.55	4B52	82.00	5/8	1B	SD	1 13/16	13/16	9
5.0	5.4	5.75	4B54	84.00	5/8	1B	SD	1 13/16	13/16	10
5.2	5.6	5.95	4B56	86.00	5/8	1B	SD	1 13/16	13/16	10
5.4	5.8	6.15	4B58	88.00	5/8	1W	SD	1 13/16	13/16	11
5.6	6.0	6.35	4B60	90.00	5/8	1W	SD	1 13/16	13/16	11
5.8	6.2	6.55	4B62	92.00	5/8	1W	SD	1 13/16	13/16	12
6.0	6.4	6.75	4B64	96.00	5/8	1W	SD	1 13/16	13/16	11
6.2	6.6	6.95	4B66	100.00	5/8	1W	SD	1 13/16	13/16	11
6.4	6.8	7.15	4B68	104.00	5/8	1W	SD	1 13/16	13/16	12
6.6	7.0	7.35	4B70	108.00	3/16	1W	SK	1 7/8	1 3/16	13
7.0	7.4	7.75	4B74	112.00	3/16	1W	SK	1 7/8	1 3/16	15
7.6	8.0	8.35	4B80	116.00	3/16	1W	SK	1 7/8	1 3/16	15
8.2	8.6	8.95	4B86	124.00	3/16	1A	SK	1 7/8	1 3/16	17
8.6	9.0	9.35	4B90	131.00	3/16	1A	SK	1 7/8	1 3/16	17
9.0	9.4	9.75	4B94	138.00	3/16	1A	SK	1 7/8	1 3/16	19
10.6	11.0	11.35	4B110	152.00	3/16	1A	SK	1 7/8	1 3/16	25
12.0	12.4	12.75	4B124	170.00	3/16	1A	SK	1 7/8	1 3/16	28
13.2	13.6	13.95	4B136	204.00	3/16	1A	SK	1 7/8	1 3/16	32
15.0	15.4	15.75	4B154	224.00	3/16	1A	SF	2	1 1/16	38
15.6	16.0	16.35	4B160	244.00	3/16	1A	SF	2	1 1/16	41
18.0	18.4	18.75	4B184	260.00	3/16	1A	SF	2	1 1/16	48
19.6	20.0	20.35	4B200	364.00	3/16	1A	SF	2	1 1/16	60
24.6	25.0	25.35	4B250	480.00	1/16	6A	E	2 5/8	11/16	93
29.6	30.0	30.35	4B300	560.00	1/16	6A	E	2 5/8	11/16	120
37.6	38.0	38.35	4B380	980.00	0	4A	E	2 5/8	5/8	162

P.D. for "A" (4L) Belts = Datum Dia. + .35" = O.D. - .40

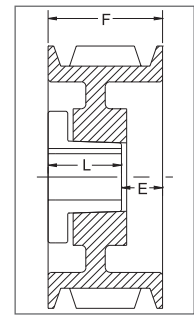
P.D. for "B" (5L) Belts = O.D.

¹ Reverse mount only.

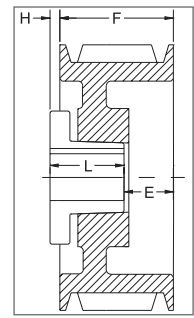
* Mounting bolts are supplied by Maska with this sheave.



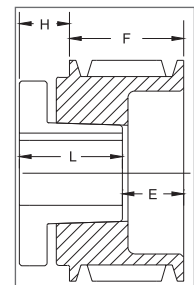
TYPE 1



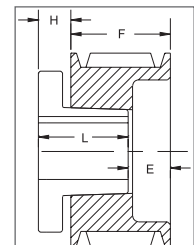
TYPE 4



TYPE 6



TYPE 10



TYPE 11

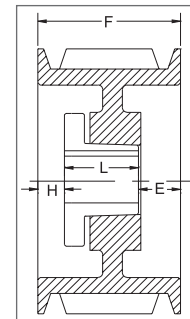
SHEAVES

"A/B" COMBINATION

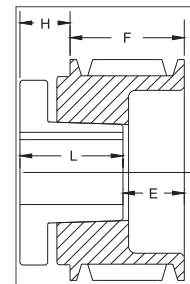
DIMENSIONS 5 GROOVES

SHEAVES

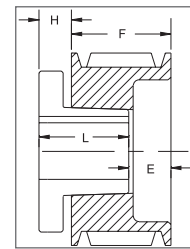
Datum dia.		O.D.	Part No	List Price \$	F = 4 inches					
"A" Belts	"B" Belts				H	Type	B	L	E	Wt
3.0	3.4	3.75	5B34^{1*}	74.00	1	10B	SD	1 13/16	3 3/16	5
3.2	3.6	3.95	5B36^{1*}	76.00	1	10B	SD	1 13/16	3 3/16	6
3.4	3.8	4.15	5B38^{1*}	78.00	1	10B	SD	1 13/16	3 3/16	6
3.6	4.0	4.35	5B40^{1*}	80.00	11/16	11B	SD	1 13/16	2 7/8	6
3.8	4.2	4.55	5B42^{1*}	82.00	11/16	11B	SD	1 13/16	2 7/8	7
4.0	4.4	4.75	5B44^{1*}	84.00	11/16	11B	SD	1 13/16	2 7/8	7
4.2	4.6	4.95	5B46^{1*}	86.00	5/8	1B	SD	1 13/16	1 9/16	7
4.4	4.8	5.15	5B48	90.00	5/8	1B	SD	1 13/16	1 9/16	9
4.6	5.0	5.35	5B50	92.00	5/8	1B	SD	1 13/16	1 9/16	10
4.8	5.2	5.55	5B52	94.00	5/8	1B	SD	1 13/16	1 9/16	10
5.0	5.4	5.75	5B54	96.00	1/2	1B	SK	1 7/8	1 5/8	10
5.2	5.6	5.95	5B56	98.00	1/2	1B	SK	1 7/8	1 5/8	11
5.4	5.8	6.15	5B58	100.00	1/2	1B	SK	1 7/8	1 5/8	12
5.6	6.0	6.35	5B60	106.00	1/2	1B	SK	1 7/8	1 5/8	12
5.8	6.2	6.55	5B62	110.00	1/2	1B	SK	1 7/8	1 5/8	14
6.0	6.4	6.75	5B64	116.00	1/2	1B	SK	1 7/8	1 5/8	14
6.2	6.6	6.95	5B66	120.00	1/2	1B	SK	1 7/8	1 5/8	15
6.4	6.8	7.15	5B68	124.00	1/2	1B	SK	1 7/8	1 5/8	16
6.6	7.0	7.35	5B70	132.00	1/2	1B	SF	2	1 1/2	16
7.0	7.4	7.75	5B74	150.00	1/2	1B	SF	2	1 1/2	18
7.6	8.0	8.35	5B80	154.00	1/2	1W	SF	2	1 1/2	19
8.2	8.6	8.95	5B86	164.00	1/2	1W	SF	2	1 1/2	21
8.6	9.0	9.35	5B90	168.00	1/2	1A	SF	2	1 1/2	21
9.0	9.4	9.75	5B94	172.00	1/2	1A	SF	2	1 1/2	22
10.6	11.0	11.35	5B110	194.00	1/2	1A	SF	2	1 1/2	29
12.0	12.4	12.75	5B124	208.00	1/2	1A	SF	2	1 1/2	33
13.2	13.6	13.95	5B136	240.00	1/2	1A	SF	2	1 1/2	39
15.0	15.4	15.75	5B154	268.00	1/2	1A	SF	2	1 1/2	43
15.6	16.0	16.35	5B160	294.00	1/2	1A	SF	2	1 1/2	46
18.0	18.4	18.75	5B184	316.00	1/2	1A	SF	2	1 1/2	54
19.6	20.0	20.35	5B200	390.00	3/16	1A	E	2 5/8	1 3/16	77.5
24.6	25.0	25.35	5B250	500.00	3/16	1A	E	2 5/8	1 3/16	108
29.6	30.0	30.35	5B300	696.00	3/16	1A	E	2 5/8	1 3/16	131
37.6	38.0	38.35	5B380	1080.00	3/16	1A	E	2 5/8	1 3/16	169



TYPE 1



TYPE 10



TYPE 11

P.D. for "A" (4L) Belts = Datum Dia. + .35" = O.D. - .40

P.D. for "B" (5L) Belts = O.D.

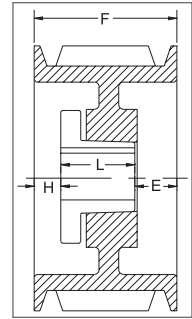
¹ Reverse mount only.

* Mounting bolts are supplied by Maska with this sheave.

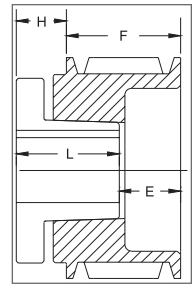
“A/B” COMBINATION

DIMENSIONS 6 GROOVES

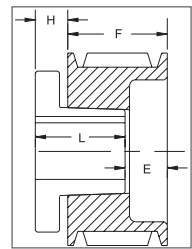
Datum dia.		O.D.	Part No	List Price \$	F = 4 3/4 inches					
“A” Belts	“B” Belts				H	Type	B	L	E	Wt
3.0	3.4	3.75	6B34^{1*}	98.00	1 3/32	10B	SD	1 13/16	4 1/32	6
3.2	3.6	3.95	6B36^{1*}	100.00	1 3/32	10B	SD	1 13/16	4 1/32	7
3.4	3.8	4.15	6B38^{1*}	102.00	1 3/32	10B	SD	1 13/16	4 1/32	7
3.6	4.0	4.35	6B40^{1*}	104.00	11/16	11B	SD	1 13/16	3 5/8	7
3.8	4.2	4.55	6B42^{1*}	106.00	11/16	11B	SD	1 13/16	3 5/8	8
4.0	4.4	4.75	6B44^{1*}	110.00	11/16	11B	SD	1 13/16	3 5/8	9
4.2	4.6	4.95	6B46*	112.00	5/8	1B	SD	1 13/16	2 5/16	9
4.4	4.8	5.15	6B48	114.00	5/8	1B	SD	1 13/16	2 5/16	10
4.6	5.0	5.35	6B50	116.00	5/8	1B	SD	1 13/16	2 5/16	11
4.8	5.2	5.55	6B52	118.00	5/8	1B	SD	1 13/16	2 5/16	11
5.0	5.4	5.75	6B54	120.00	1/2	1B	SK	1 7/8	2 3/8	11
5.2	5.6	5.95	6B56	122.00	1/2	1B	SK	1 7/8	2 3/8	13.4
5.4	5.8	6.15	6B58	124.00	1/2	1B	SK	1 7/8	2 3/8	15.5
5.6	6.0	6.35	6B60	126.00	1/2	1B	SK	1 7/8	2 3/8	15
5.8	6.2	6.55	6B62	130.00	1/2	1B	SK	1 7/8	2 3/8	15
6.0	6.4	6.75	6B64	134.00	1/2	1B	SK	1 7/8	2 3/8	16
6.2	6.6	6.95	6B66	138.00	1/2	1B	SK	1 7/8	2 3/8	17
6.4	6.8	7.15	6B68	142.00	1/2	1B	SK	1 7/8	2 3/8	18
6.6	7.0	7.35	6B70	150.00	7/8	1B	SF	2	1 7/8	19
7.0	7.4	7.75	6B74	204.00	7/8	1B	SF	2	1 7/8	20
7.6	8.0	8.35	6B80	208.00	7/8	1W	SF	2	1 7/8	24
8.2	8.6	8.95	6B86	220.00	7/8	1W	SF	2	1 7/8	26
9.0	9.4	9.75	6B94	230.00	7/8	1W	SF	2	1 7/8	30
10.6	11.0	11.35	6B110	248.00	7/8	1A	SF	2	1 7/8	30
12.0	12.4	12.75	6B124	276.00	7/8	1A	SF	2	1 7/8	37
13.2	13.6	13.95	6B136	280.00	1 3/32	1A	SF	2	1 21/32	39
15.0	15.4	15.75	6B154	300.00	1 3/32	1A	SF	2	1 21/32	51.4
15.6	16.0	16.35	6B160	328.00	7/8	1A	SF	2	1 7/8	54.6
18.0	18.4	18.75	6B184	348.00	1 3/32	1A	SF	2	1 21/32	59
19.6	20.0	20.35	6B200	464.00	3/16	1A	E	2 5/8	1 15/16	96.9
24.6	25.0	25.35	6B250	580.00	5/16	1A	E	2 5/8	1 13/16	120
29.6	30.0	30.35	6B300	780.00	5/16	1A	E	2 5/8	1 13/16	151
37.6	38.0	38.35	6B380	1120.00	5/16	1A	E	2 5/8	1 13/16	157



TYPE 1



TYPE 10



TYPE 11

SHEAVES

P.D. for “A” (4L) Belts = Datum Dia. + .35” = O.D. - .40

P.D. for “B” (5L) Belts = O.D.

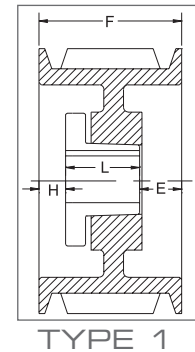
¹ Reverse mount only.

* Mounting bolts are supplied by Maska with this sheave.

“A/B” COMBINATION

DIMENSIONS 8 GROOVES

Datum dia.		O.D.	Part No	List Price \$	F = 6 1/4 inches					
“A” Belts	“B” Belts				H	Type	B	L	E	Wt
3.0	3.4	3.75	-	-	-	-	-	-	-	-
3.2	3.6	3.95	-	-	-	-	-	-	-	-
3.4	3.8	4.15	-	-	-	-	-	-	-	-
3.6	4.0	4.35	-	-	-	-	-	-	-	-
3.8	4.2	4.55	-	-	-	-	-	-	-	-
4.0	4.4	4.75	-	-	-	-	-	-	-	-
4.2	4.6	4.95	-	-	-	-	-	-	-	-
4.4	4.8	5.15	-	-	-	-	-	-	-	-
4.6	5.0	5.35	-	-	-	-	-	-	-	-
4.8	5.2	5.55	-	-	-	-	-	-	-	-
5.0	5.4	5.75	8B54	180.00	1	1B	SK	1 7/8	3 3/8	15
5.2	5.6	5.95	8B56	184.00	1	1B	SK	1 7/8	3 3/8	17
5.4	5.8	6.15	8B58	188.00	1	1B	SK	1 7/8	3 3/8	16
5.6	6.0	6.35	8B60	192.00	1	1B	SF	2	3 1/4	16
5.8	6.2	6.55	8B62	196.00	1	1B	SF	2	3 1/4	18
6.0	6.4	6.75	8B64	200.00	1	1B	SF	2	3 1/4	19
6.2	6.6	6.95	8B66	208.00	1	1B	SF	2	3 1/4	20
6.4	6.8	7.15	8B68	212.00	1	1B	SF	2	3 1/4	21
6.6	7.0	7.35	8B70	260.00	1	1B	SF	2	3 1/4	22
7.0	7.4	7.75	8B74	284.00	1	1B	SF	2	3 1/4	25
7.6	8.0	8.35	8B80	288.00	1 5/16	1B	E	2 5/8	2 5/16	29
8.2	8.6	8.95	8B86	292.00	1 5/16	1B	E	2 5/8	2 5/16	33
9.0	9.4	9.75	8B94	300.00	1 5/16	1B	E	2 5/8	2 5/16	36
10.6	11.0	11.35	8B110	356.00	1 5/16	1B	E	2 5/8	2 5/16	46
12.0	12.4	12.75	8B124	372.00	1 5/16	1W	E	2 5/8	2 5/16	53
13.2	13.6	13.95	8B136	452.00	1 3/8	1A	E	2 5/8	2 1/4	59
15.0	15.4	15.75	8B154	500.00	1 3/8	1A	E	2 5/8	2 1/4	69
15.6	16.0	16.35	8B160	572.00	1 5/16	1A	E	2 5/8	2 5/16	71
18.0	18.4	18.75	8B184	636.00	3/32	1A	F	3 5/8	2 17/32	108
19.6	20.0	20.35	8B200	690.00	3/32	1A	F	3 5/8	2 17/32	114
24.6	25.0	25.35	8B250	880.00	3/32	1A	F	3 5/8	2 17/32	152
29.6	30.0	30.35	8B300	1260.00	3/32	1A	F	3 5/8	2 17/32	186
37.6	38.0	38.35	8B380	1740.00	3/32	1A	F	3 5/8	2 17/32	220



SHEAVES

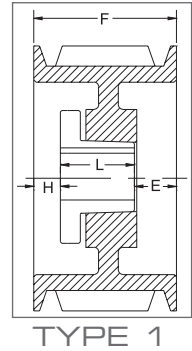
P.D. for “A” (4L) Belts = Datum Dia. + .35” = O.D. - .40

P.D. for “B” (5L) Belts = O.D.

"A/B" COMBINATION

DIMENSIONS 10 GROOVES

Datum dia.		O.D.	Part No	List Price \$	F = 7 3/4 inches					
"A" Belts	"B" Belts				H	Type	B	L	E	Wt
3.0	3.4	3.75	-	-	-	-	-	-	-	-
3.2	3.6	3.95	-	-	-	-	-	-	-	-
3.4	3.8	4.15	-	-	-	-	-	-	-	-
3.6	4.0	4.35	-	-	-	-	-	-	-	-
3.8	4.2	4.55	-	-	-	-	-	-	-	-
4.0	4.4	4.75	-	-	-	-	-	-	-	-
4.2	4.6	4.95	-	-	-	-	-	-	-	-
4.4	4.8	5.15	-	-	-	-	-	-	-	-
4.6	5.0	5.35	-	-	-	-	-	-	-	-
4.8	5.2	5.55	-	-	-	-	-	-	-	-
5.0	5.4	5.75	10B54	280.00	1 3/4	1B	SK	1 7/8	4 1/8	16
5.2	5.6	5.95	10B56	288.00	1 3/4	1B	SK	1 7/8	4 1/8	17
5.4	5.8	6.15	10B58	296.00	1 3/4	1B	SK	1 7/8	4 1/8	18
5.6	6.0	6.35	10B60	304.00	1 3/4	1B	SF	2	4	19
5.8	6.2	6.55	10B62	312.00	1 3/4	1B	SF	2	4	20
6.0	6.4	6.75	10B64	320.00	1 3/4	1B	SF	2	4	21
6.2	6.6	6.95	10B66	332.00	1 3/4	1B	SF	2	4	21
6.4	6.8	7.15	10B68	344.00	1 3/4	1B	SF	2	4	22
6.6	7.0	7.35	10B70	352.00	1 3/4	1B	SF	2	4	23
7.0	7.4	7.75	10B74	360.00	1 3/4	1B	SF	2	4	24
7.6	8.0	8.35	-	-	-	-	-	-	-	-
8.2	8.6	8.95	10B86	372.00	2 1/16	1B	E	2 5/8	3 1/16	39.6
9.0	9.4	9.75	10B94	420.00	2 1/16	1B	E	2 5/8	3 1/16	40
10.6	11.0	11.35	10B110	520.00	2 1/16	1B	E	2 5/8	3 1/16	52
12.0	12.4	12.75	10B124	532.00	2 1/16	1W	E	2 5/8	3 1/16	58
13.2	13.6	13.95	10B136	636.00	27/32	1A	F	3 5/8	3 9/32	73
15.0	15.4	15.75	10B154	680.00	27/32	1A	F	3 5/8	3 9/32	87
15.6	16.0	16.35	10B160	760.00	27/32	1A	F	3 5/8	3 9/32	100
18.0	18.4	18.75	10B184	800.00	27/32	1A	F	3 5/8	3 9/32	110
19.6	20.0	20.35	10B200	860.00	27/32	1A	F	3 5/8	3 9/32	120
24.6	25.0	25.35	10B250	1160.00	27/32	1A	F	3 5/8	3 9/32	148
29.6	30.0	30.35	10B300	1380.00	27/32	1A	F	3 5/8	3 9/32	190
37.6	38.0	38.35	10B380	1780.00	7/32	1A	J	4 1/2	3 1/32	260



SHEAVES

P.D. for "A" (4L) Belts = Datum Dia. + .35" = O.D. - .40

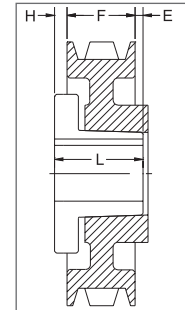
P.D. for "B" (5L) Belts = O.D.

"C" SECTION

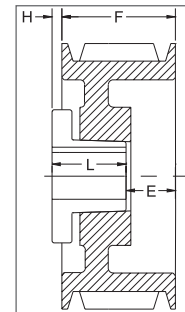
DIMENSIONS 1 GROOVE

Datum dia.	O.D.	Part No	List Price \$	F = 1 3/8 inches					
				H	Type	B	L	E	Wt
5.0	5.4	-	-	-	-	-	-	-	-
6.0	6.4	-	-	-	-	-	-	-	-
7.0	7.4	1C70	112.00	9/16	5B	SF	2	1/16	10
7.5	7.9	1C75	120.00	9/16	5B	SF	2	1/16	11
8.0	8.4	1C80	124.00	9/16	5B	SF	2	1/16	13.2
8.5	8.9	1C85	128.00	9/16	5B	SF	2	1/16	15.6
9.0	9.4	1C90	132.00	19/32	5W	SF	2	1/32	13
9.5	9.9	1C95	136.00	19/32	5W	SF	2	1/32	18
10.0	10.4	1C100	140.00	11/16	6W	SF	2	1/16	14
10.5	10.9	1C105	152.00	11/16	6W	SF	2	1/16	20
11.0	11.4	1C110	172.00	17/32	5W	SF	2	3/32	15
12.0	12.4	1C120	184.00	11/16	6W	SF	2	1/16	16
13.0	13.4	1C130	240.00	11/16	6A	SF	2	1/16	18
14.0	14.4	1C140	260.00	11/16	6A	SF	2	1/16	20
16.0	16.4	1C160	280.00	11/16	6A	SF	2	1/16	24
18.0	18.4	1C180	300.00	11/16	6A	SF	2	1/16	32
20.0	20.4	1C200	320.00	11/16	6A	SF	2	1/16	35
24.0	24.4	1C240	360.00	11/16	6A	SF	2	1/16	46.9
27.0	27.4	-	-	-	-	-	-	-	-
30.0	30.4	-	-	-	-	-	-	-	-
36.0	36.4	-	-	-	-	-	-	-	-
44.0	44.4	-	-	-	-	-	-	-	-
50.0	50.4	-	-	-	-	-	-	-	-

P.D. for "C" Belts =O.D.



TYPE 5



TYPE 6

SHEAVES

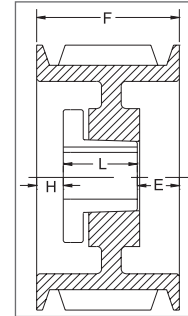


"C" SECTION

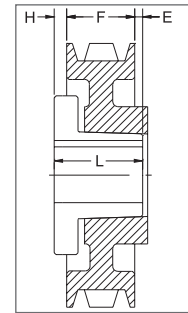
DIMENSIONS 2 GROOVES

Datum dia.	O.D.	Part No	List Price \$	F = 2 3/8 inches					
				H	Type	B	L	E	Wt
5.0	5.4	-	-	-	-	-	-	-	-
6.0	6.4	2C60	126.00	1/16	1B	SF	2	5/16	11
7.0	7.4	2C70	132.00	0	1B	SF	2	3/8	13
7.5	7.9	2C75	136.00	0	1B	SF	2	3/8	15
8.0	8.4	2C80	144.00	0	1B	SF	2	3/8	17
8.5	8.9	2C85	148.00	0	1B	SF	2	3/8	19
9.0	9.4	2C90	152.00	0	1W	SF	2	3/8	21
9.5	9.9	2C95	160.00	0	1W	SF	2	3/8	22
10.0	10.4	2C100	176.00	0	1W	SF	2	3/8	21.8
10.5	10.9	2C105	188.00	0	1W	SF	2	3/8	23
11.0	11.4	2C110	200.00	0	1W	SF	2	3/8	26
12.0	12.4	2C120	210.00	1/4	6W	SF	2	5/8	37
13.0	13.4	2C130	250.00	1/4	6A	SF	2	5/8	35
14.0	14.4	2C140	270.00	1/4	6A	SF	2	5/8	40
16.0	16.4	2C160	290.00	1/4	6A	SF	2	5/8	40
18.0	18.4	2C180	310.00	1/4	6A	SF	2	5/8	50
20.0	20.4	2C200	340.00	1/4	6A	SF	2	5/8	55
24.0	24.4	2C240	460.00	1/4	6A	SF	2	5/8	73.1
27.0	27.4	2C270	550.00	29/32	5A	F	3 5/8	11/32	94
30.0	30.4	2C300	620.00	29/32	5A	F	3 5/8	11/32	104
36.0	36.4	-	-	-	-	-	-	-	-
44.0	44.4	-	-	-	-	-	-	-	-
50.0	50.4	-	-	-	-	-	-	-	-

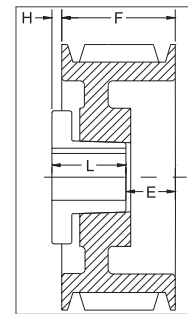
P.D. for "C" Belts = O.D.



TYPE 1



TYPE 5

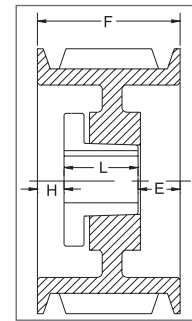


TYPE 6

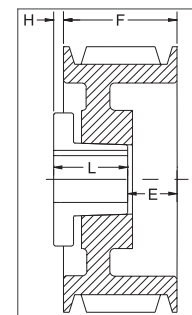
"C" SECTION

DIMENSIONS 3 GROOVES

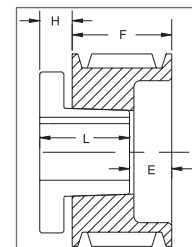
Datum dia.	O.D.	Part No	List Price \$	F = 3 3/8 inches					
				H	Type	B	L	E	Wt
5.0	5.4	3C50*	136.00	5/16	1B	SD	1 13/16	1 1/4	9
5.0	5.4	3C50SK¹	136.00	13/16	11B	SK	1 7/8	2 5/16	10.5
5.6	6.0	3C56	138.00	5/8	1B	SD	1 13/16	15/16	10
6.0	6.4	3C60	140.00	1/16	1B	SF	2	1 5/16	11.3
7.0	7.4	3C70	144.00	1/2	1B	SF	2	7/8	16
7.5	7.9	3C75	148.00	1/2	1B	SF	2	7/8	18
8.0	8.4	3C80	156.00	11/16	1B	E	2 5/8	1/16	21
8.5	8.9	3C85	176.00	11/16	1B	E	2 5/8	1/16	24
9.0	9.4	3C90	188.00	11/16	1B	E	2 5/8	1/16	26
9.5	9.9	3C95	200.00	11/16	1W	E	2 5/8	1/16	29.8
10.0	10.4	3C100	220.00	11/16	1W	E	2 5/8	1/16	34
10.5	10.9	3C105	230.00	11/16	1W	E	2 5/8	1/16	37
11.0	11.4	3C110	240.00	11/16	1W	E	2 5/8	1/16	39
12.0	12.4	3C120	250.00	11/16	1W	E	2 5/8	1/16	43.4
13.0	13.4	3C130	290.00	11/16	1A	E	2 5/8	1/16	45
14.0	14.4	3C140	320.00	11/16	1A	E	2 5/8	1/16	50
16.0	16.4	3C160	330.00	11/16	1A	E	2 5/8	1/16	60
18.0	18.4	3C180	350.00	11/16	1A	E	2 5/8	1/16	63
20.0	20.4	3C200	400.00	1/16	6A	E	2 5/8	13/16	81
24.0	24.4	3C240	480.00	1/16	6A	E	2 5/8	13/16	94.7
27.0	27.4	3C270	580.00	13/32	6A	F	3 5/8	5/32	116
30.0	30.4	3C300	640.00	13/32	6A	F	3 5/8	5/32	134.4
36.0	36.4	3C360	980.00	13/32	6A	F	3 5/8	5/32	159
44.0	44.4	3C440	1720.00	13/32	6A	F	3 5/8	5/32	190
50.0	50.4	3C500	1920.00	13/32	6A	F	3 5/8	5/32	250



TYPE 1



TYPE 6



TYPE 11

P.D. for "C" Belts = O.D.

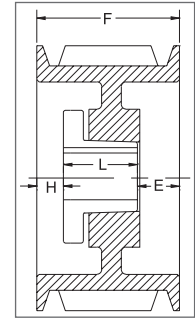
¹ Reverse mount only.

* Mounting bolts are supplied by Maska with this sheave.

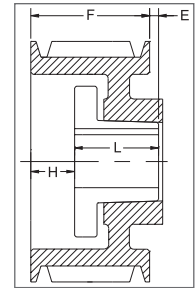
"C" SECTION

DIMENSIONS 4 GROOVES

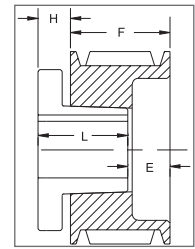
Datum dia.	O.D.	Part No	List Price \$	F = 4 3/8 inches					
				H	Type	B	L	E	Wt
5.0	5.4	4C50*	156.00	5/8	1B	SD	1 13/16	1 15/16	10.2
5.0	5.4	4C50SK¹	156.00	13/16	11B	SK	1 7/8	3 5/16	12.0
5.6	6.0	4C56	158.00	7/8	1B	SD	1 13/16	1 11/16	13.0
6.0	6.4	4C60	160.00	1/16	1B	SF	2	2 5/16	15.0
7.0	7.4	4C70	164.00	3/4	1B	SF	2	1 5/8	19.0
7.5	7.9	4C75	172.00	3/4	1B	SF	2	1 5/8	22.0
8.0	8.4	4C80	196.00	15/16	1B	E	2 5/8	13/16	24.0
8.5	8.9	4C85	208.00	15/16	1B	E	2 5/8	13/16	28.0
9.0	9.4	4C90	224.00	15/16	1B	E	2 5/8	13/16	31.0
9.5	9.9	4C95	228.00	15/16	1B	E	2 5/8	13/16	34.8
10.0	10.4	4C100	240.00	15/16	1B	E	2 5/8	13/16	40.0
10.5	10.9	4C105	260.00	15/16	1W	E	2 5/8	13/16	43.0
11.0	11.4	4C110	272.00	15/16	1W	E	2 5/8	13/16	44.0
12.0	12.4	4C120	300.00	15/16	1W	E	2 5/8	13/16	50.0
13.0	13.4	4C130	336.00	15/16	1A	E	2 5/8	13/16	52.0
14.0	14.4	4C140	364.00	15/16	1A	E	2 5/8	13/16	57.0
16.0	16.4	4C160	420.00	15/16	1A	E	2 5/8	13/16	67.0
18.0	18.4	4C180	430.00	15/16	1A	E	2 5/8	13/16	72.0
20.0	20.4	4C200	450.00	7/16	1A	E	2 5/8	1 5/16	86.0
24.0	24.4	4C240	560.00	3/32	1A	F	3 5/8	21/32	113.0
27.0	27.4	4C270	660.00	3/32	1A	F	3 5/8	21/32	140.0
30.0	30.4	4C300	760.00	3/32	1A	F	3 5/8	21/32	149.0
36.0	36.4	4C360	1120.00	5/32	1A	F	3 5/8	19/32	185.0
44.0	44.4	4C440	1800.00	7/32	2A	J	4 1/2	11/32	225.0
50.0	50.4	4C500	2120.00	7/32	2A	J	4 1/2	11/32	275.0



TYPE 1



TYPE 2



TYPE 1 1

P.D. for "C" Belts = O.D.

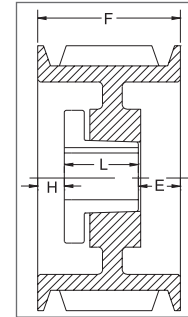
¹ Reverse mount only.

* Mounting bolts are supplied by Maska with this sheave.

"C" SECTION

DIMENSIONS 5 GROOVES

Datum dia.	O.D.	Part No	List Price \$	F = 5 3/8 inches					Wt
				H	Type	B	L	E	
5.0	5.4	-	-	-	-	-	-	-	-
6.0	6.4	5C60SF	172.00	1/16	1B	SF	2	3 5/16	16
7.0	7.4	5C70	176.00	1 1/8	1B	SF	2	2 1/4	23
7.5	7.9	5C75	224.00	1 1/8	1B	SF	2	2 1/4	25
8.0	8.4	5C80	236.00	1 5/16	1B	E	2 5/8	1 7/16	28
8.5	8.9	5C85	252.00	1 5/16	1B	E	2 5/8	1 7/16	32
9.0	9.4	5C90	256.00	1 5/16	1B	E	2 5/8	1 7/16	36
9.5	9.9	5C95	262.00	1 5/16	1B	E	2 5/8	1 7/16	40
10.0	10.4	5C100	276.00	1 5/16	1W	E	2 5/8	1 7/16	41
10.5	10.9	5C105	296.00	1 5/16	1W	E	2 5/8	1 7/16	44
11.0	11.4	5C110	332.00	1 5/16	1W	E	2 5/8	1 7/16	47
12.0	12.4	5C120	336.00	1 5/16	1W	E	2 5/8	1 7/16	55
13.0	13.4	5C130	376.00	1 5/16	1A	E	2 5/8	1 7/16	55
14.0	14.4	5C140	380.00	1 5/16	1A	E	2 5/8	1 7/16	62
16.0	16.4	5C160	430.00	1 5/16	1A	E	2 5/8	1 7/16	73
18.0	18.4	5C180	480.00	1 5/16	1A	E	2 5/8	1 7/16	83
20.0	20.4	5C200	600.00	3/32	1A	F	3 5/8	1 21/32	109
24.0	24.4	5C240	640.00	3/32	1A	F	3 5/8	1 21/32	129
27.0	27.4	5C270	760.00	3/32	1A	F	3 5/8	1 21/32	149
30.0	30.4	5C300	840.00	3/32	1A	F	3 5/8	1 21/32	172
36.0	36.4	5C360	1180.00	7/32	1A	J	4 1/2	21/32	205
44.0	44.4	5C440	1940.00	7/32	1A	J	4 1/2	21/32	285
50.0	50.4	5C500	2280.00	7/32	1A	J	4 1/2	21/32	325



TYPE 1

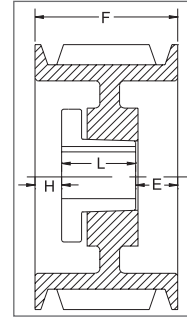
P.D. for "C" Belts = O.D.

SHEAVES

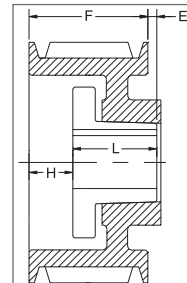
"C" SECTION

DIMENSIONS 6 GROOVES

Datum dia.	O.D.	Part No	List Price \$	F = 6 3/8 inches					
				H	Type	B	L	E	Wt
5.0	5.4	-	-	-	-	-	-	-	-
6.0	6.4	6C60	244.00	1 1/16	1B	SF	2	3 5/16	24
7.0	7.4	6C70	248.00	1 1/8	1B	SF	2	3 1/4	26
7.5	7.9	6C75	264.00	1 1/8	1B	SF	2	3 1/4	29
8.0	8.4	6C80	280.00	1 5/16	1B	E	2 5/8	2 7/16	31
8.5	8.9	6C85	288.00	1 5/16	1B	E	2 5/8	2 7/16	35
9.0	9.4	6C90	296.00	1 7/32	1B	F	3 5/8	1 17/32	44
9.5	9.9	6C95	316.00	1 7/32	1B	F	3 5/8	1 17/32	49
10.0	10.4	6C100	328.00	1 7/32	1B	F	3 5/8	1 17/32	56
10.5	10.9	6C105	336.00	1 7/32	1B	F	3 5/8	1 17/32	56
11.0	11.4	6C110	356.00	1 7/32	1W	F	3 5/8	1 17/32	59
12.0	12.4	6C120	400.00	1 7/32	1W	F	3 5/8	1 17/32	66
13.0	13.4	6C130	444.00	1 7/32	1A	F	3 5/8	1 17/32	66
14.0	14.4	6C140	480.00	1 7/32	1A	F	3 5/8	1 17/32	75
16.0	16.4	6C160	520.00	1 7/32	1A	F	3 5/8	1 17/32	86
18.0	18.4	6C180	560.00	1 7/32	1A	F	3 5/8	1 17/32	100
20.0	20.4	6C200	620.00	23/32	1A	F	3 5/8	2 1/32	119
24.0	24.4	6C240	720.00	23/32	1A	F	3 5/8	2 1/32	141
27.0	27.4	6C270	880.00	5/32	1A	J	4 1/2	1 23/32	173
30.0	30.4	6C300	1040.00	5/32	1A	J	4 1/2	1 23/32	189
36.0	36.4	6C360	1300.00	7/32	1A	J	4 1/2	1 21/32	240
44.0	44.4	6C440	2040.00	7/32	1A	J	4 1/2	1 21/32	290
50.0	50.4	6C500	2680.00	11/32	2A	M°	6 3/4	23/32	430



TYPE 1



TYPE 2

SHEAVES

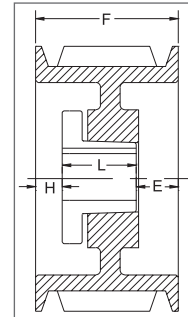
P.D. for "C" Belts same = O.D.

*Note: M-N-P-W bushings are standard mounting only with these parts. See page 11 for installation instructions.

"C" SECTION

DIMENSIONS 8 GROOVES

Datum dia.	O.D.	Part No	List Price \$	F = 8 3/8 inches					
				H	Type	B	L	E	Wt
5.0	5.4	-	-	-	-	-	-	-	-
6.0	6.4	-	-	-	-	-	-	-	-
7.0	7.4	8C70	320.00	2 13/32	1B	SF	2	3 31/32	34
7.5	7.9	-	-	-	-	-	-	-	-
8.0	8.4	8C80	390.00	2 3/16	1B	E	2 5/8	3 9/16	38.7
8.5	8.9	8C85	400.00	2 3/16	1B	E	2 5/8	3 9/16	44
9.0	9.4	8C90	410.00	2 3/32	1B	F	3 5/8	2 21/32	52.7
9.5	9.9	8C95	420.00	2 3/32	1B	F	3 5/8	2 21/32	56
10.0	10.4	8C100	430.00	2 3/32	1B	F	3 5/8	2 21/32	62
10.5	10.9	8C105	450.00	2 3/32	1B	F	3 5/8	2 21/32	72
11.0	11.4	8C110	480.00	2 3/32	1B	F	3 5/8	2 21/32	80
12.0	12.4	8C120	520.00	2 3/32	1B	F	3 5/8	2 21/32	94
13.0	13.4	8C130	560.00	2 3/32	1W	F	3 5/8	2 21/32	97
14.0	14.4	8C140	650.00	2 3/32	1A	F	3 5/8	2 21/32	96
16.0	16.4	8C160	740.00	2 3/32	1A	F	3 5/8	2 21/32	111
18.0	18.4	8C180	860.00	2 3/32	1A	F	3 5/8	2 21/32	129
20.0	20.4	8C200	870.00	5/32	1A	J	4 1/2	3 23/32	158
24.0	24.4	8C240	1020.00	5/32	1A	J	4 1/2	3 23/32	173
27.0	27.4	8C270	1120.00	5/32	1A	J	4 1/2	3 23/32	226
30.0	30.4	8C300	1280.00	5/32	1A	J	4 1/2	3 23/32	272
36.0	36.4	8C360	1600.00	9/32	1A	M°	6 3/4	1 11/32	370
44.0	44.4	8C440	2560.00	9/32	1A	M°	6 3/4	1 11/32	479
50.0	50.4	8C500	3000.00	9/32	1A	M°	6 3/4	1 11/32	570



TYPE 1

SHEAVES

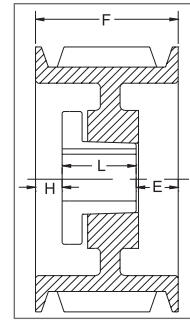
P.D. for "C" Belts = O.D.

*Note: M-N-P-W bushings are standard mounting only with these parts. See page 11 for installation instructions.

"C" SECTION

DIMENSIONS 10 GROOVES

Datum dia.	O.D.	Part No	List Price \$	F = 10 3/8 inches					
				H	Type	B	L	E	Wt
8.0	8.4	10C80	460.00	2 3/16	1B	E	2 5/8	5 9/16	46.3
8.5	8.9	10C85	480.00	2 3/16	1B	E	2 5/8	5 9/16	52
9.0	9.4	10C90	500.00	2 5/32	1B	J	4 1/2	3 23/32	54
9.5	9.9	10C95	510.00	2 5/32	1B	J	4 1/2	3 23/32	67.4
10.0	10.4	10C100	520.00	2 5/32	1B	J	4 1/2	3 23/32	77
10.5	10.9	10C105	580.00	2 5/32	1B	J	4 1/2	3 23/32	85.7
11.0	11.4	10C110	600.00	2 5/32	1B	J	4 1/2	3 23/32	93.5
12.0	12.4	10C120	760.00	2 5/32	1B	J	4 1/2	3 23/32	111.8
13.0	13.4	10C130	840.00	2 5/32	1W	J	4 1/2	3 23/32	105
14.0	14.4	10C140	900.00	2 5/32	1W	J	4 1/2	3 23/32	114
16.0	16.4	10C160	960.00	2 5/32	1A	J	4 1/2	3 23/32	140
18.0	18.4	10C180	1080.00	2 5/32	1A	J	4 1/2	3 23/32	160
20.0	20.4	10C200	1120.00	2 5/32	1A	J	4 1/2	3 23/32	165
24.0	24.4	10C240	1360.00	9/32	1A	M°	6 3/4	3 11/32	225
30.0	30.4	10C300	1760.00	9/32	1A	M°	6 3/4	3 11/32	275
36.0	36.4	10C360	2560.00	9/32	1A	M°	6 3/4	3 11/32	340
44.0	44.4	10C440	2800.00	9/32	1A	M°	6 3/4	3 11/32	460
50.0	50.4	10C500	3500.00	9/32	1A	M°	6 3/4	3 11/32	550



TYPE 1

SHEAVES

DIMENSIONS 12 GROOVES

Datum dia.	O.D.	Part No	List Price \$	F = 12 3/8 inches					
				H	Type	B	L	E	Wt
9.0	9.4	12C90	700.00	2 21/32	1B	J	4 1/2	5 7/32	68
9.5	9.9	12C95	720.00	2 21/32	1B	J	4 1/2	5 7/32	75
10.0	10.4	12C100	740.00	2 21/32	1B	J	4 1/2	5 7/32	86
10.5	10.9	12C105	760.00	2 21/32	1B	J	4 1/2	5 7/32	96
11.0	11.4	12C110	780.00	2 21/32	1B	J	4 1/2	5 7/32	104
12.0	12.4	12C120	800.00	2 21/32	1B	J	4 1/2	5 7/32	118.7
13.0	13.4	12C130	920.00	2 21/32	1W	J	4 1/2	5 7/32	138
14.0	14.4	12C140	1180.00	2 21/32	1W	J	4 1/2	5 7/32	153
16.0	16.4	12C160	1360.00	2 21/32	1A	J	4 1/2	5 7/32	175
18.0	18.4	12C180	1400.00	2 21/32	1A	J	4 1/2	5 7/32	198
20.0	20.4	12C200	1480.00	9/32	1A	M°	6 3/4	5 11/32	237
24.0	24.4	12C240	1520.00	9/32	1A	M°	6 3/4	5 11/32	277
30.0	30.4	12C300	1780.00	9/32	1A	M°	6 3/4	5 11/32	357
36.0	36.4	12C360	2640.00	9/32	1A	M°	6 3/4	5 11/32	430
44.0	44.4	12C440	3200.00	9/32	1A	M°	6 3/4	5 11/32	520
50.0	50.4	12C500	3900.00	9/32	1A	M°	6 3/4	5 11/32	595

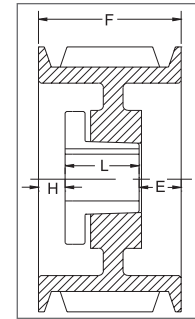
P.D. for "C" Belts = O.D.

*Note: M-N-P-W bushings are standard mounting only with these parts. See page 11 for installation instructions.

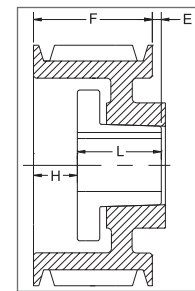
“D” SECTION

DIMENSIONS 3 GROOVES

Datum dia.	O.D.	Part No	List Price \$	F = 4 5/8 inches					
				H	Type	B	L	E	Wt
12.0	12.6	3D120	560.00	9/32	1W	F	3 5/8	23/32	64
13.0	13.6	3D130	600.00	9/32	1W	F	3 5/8	23/32	72
13.5	14.1	3D135	620.00	9/32	1W	F	3 5/8	23/32	76
14.0	14.6	3D140	640.00	9/32	1W	F	3 5/8	23/32	79
14.5	15.1	3D145	680.00	9/32	1W	F	3 5/8	23/32	84
15.0	15.6	3D150	720.00	9/32	1W	F	3 5/8	23/32	89
15.5	16.1	3D155	740.00	9/32	1W	F	3 5/8	23/32	94
16.0	16.6	3D160	760.00	9/32	1A	F	3 5/8	23/32	95
17.0	17.6	-	-	-	-	-	-	-	-
18.0	18.6	3D180	800.00	7/32	6A	J	4 1/2	11/32	115
20.0	20.6	-	-	-	-	-	-	-	-
22.0	22.6	3D220	960.00	7/32	6A	J	4 1/2	11/32	135
27.0	27.6	3D270	1160.00	7/32	6A	J	4 1/2	11/32	170
33.0	33.6	3D330	1640.00	7/32	6A	J	4 1/2	11/32	215
40.0	40.6	3D400	2040.00	7/32	6A	J	4 1/2	11/32	275



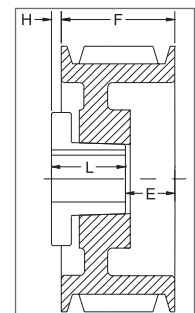
TYPE 1



TYPE 2

DIMENSIONS 4 GROOVES

Datum dia.	O.D.	Part No	List Price \$	F = 6 1/16 inches					
				H	Type	B	L	E	Wt
12.0	12.6	4D120	600.00	1 3/32	1W	F	3 5/8	1 11/32	77
13.0	13.6	4D130	640.00	1 3/32	1W	F	3 5/8	1 11/32	85
13.5	14.1	4D135	660.00	1 3/32	1W	F	3 5/8	1 11/32	90
14.0	14.6	4D140	680.00	1 3/32	1W	F	3 5/8	1 11/32	95
14.5	15.1	4D145	780.00	1 3/32	1W	F	3 5/8	1 11/32	100
15.0	15.6	4D150	800.00	1 3/32	1W	F	3 5/8	1 11/32	107
15.5	16.1	4D155	820.00	1 3/32	1W	F	3 5/8	1 11/32	112
16.0	16.6	4D160	840.00	1 3/32	1A	F	3 5/8	1 11/32	110
17.0	17.6	4D170	940.00	1 5/32	1A	J	4 1/2	13/32	127
18.0	18.6	4D180	960.00	1 5/32	1A	J	4 1/2	13/32	131
20.0	20.6	4D200	980.00	1 5/32	1A	J	4 1/2	13/32	145
22.0	22.6	4D220	1000.00	5/32	1A	J	4 1/2	1 13/32	160
27.0	27.6	4D270	1280.00	5/32	1A	J	4 1/2	1 13/32	200
33.0	33.6	4D330	2120.00	9/32	2A	M ^o	6 3/4	31/32	285
40.0	40.6	4D400	2240.00	9/32	2A	M ^o	6 3/4	31/32	375



TYPE 6

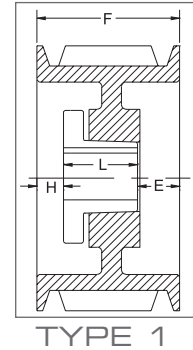
P.D. for “D” Belts = O.D.

*Note: M-N-P-W bushings are standard mounting only with these parts. See page 11 for installation instructions.

“D” SECTION

DIMENSIONS 5 GROOVES

Datum dia.	O.D.	Part No	List Price \$	F = 7 1/2 inches					
				H	Type	B	L	E	Wt
12.0	12.6	5D120	780.00	1 27/32	1W	F	3 5/8	2 1/32	89
13.0	13.6	5D130	800.00	1 27/32	1W	F	3 5/8	2 1/32	100
13.5	14.1	5D135	820.00	1 27/32	1W	F	3 5/8	2 1/32	105
14.0	14.6	5D140	860.00	1 27/32	1W	F	3 5/8	2 1/32	111
14.5	15.1	5D145	920.00	1 27/32	1W	F	3 5/8	2 1/32	118
15.0	15.6	5D150	940.00	1 27/32	1W	F	3 5/8	2 1/32	125
15.5	16.1	5D155	960.00	1 27/32	1W	F	3 5/8	2 1/32	131
16.0	16.6	5D160	980.00	1 27/32	1A	F	3 5/8	2 1/32	110
17.0	17.6	5D170	1000.00	1 29/32	1A	J	4 1/2	1 3/32	148
18.0	18.6	5D180	1020.00	1 29/32	1A	J	4 1/2	1 3/32	131
20.0	20.6	5D200	1220.00	5/32	1A	J	4 1/2	2 27/32	148
22.0	22.6	5D220	1420.00	5/32	1A	J	4 1/2	2 27/32	152
27.0	27.6	5D270	1740.00	9/32	1A	M ^o	6 3/4	15/32	250
33.0	33.6	5D330	2180.00	9/32	1A	M ^o	6 3/4	15/32	321
40.0	40.6	5D400	2700.00	9/32	1A	M ^o	6 3/4	15/32	424
48.0	48.6	5D480	3080.00	9/32	1A	M ^o	6 3/4	15/32	550
58.0	58.6	5D580	4280.00	9/32	1A	M ^o	6 3/4	15/32	600



SHEAVES

DIMENSIONS 6 GROOVES

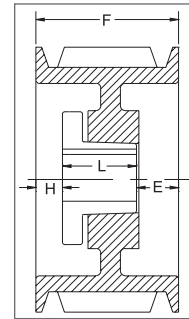
Datum dia.	O.D.	Part No	List Price \$	F = 8 15/16 inches					
				H	Type	B	L	E	Wt
12.0	12.6	6D120	960.00	1 29/32	1B	J	4 1/2	2 17/32	116
13.0	13.6	6D130	980.00	1 29/32	1B	J	4 1/2	2 17/32	137
13.5	14.1	6D135	1000.00	1 29/32	1B	J	4 1/2	2 17/32	147
14.0	14.6	6D140	1020.00	1 29/32	1B	J	4 1/2	2 17/32	158
14.5	15.1	6D145	1040.00	1 29/32	1B	J	4 1/2	2 17/32	170
15.0	15.6	6D150	1060.00	1 29/32	1W	J	4 1/2	2 17/32	147
15.5	16.1	6D155	1080.00	1 29/32	1W	J	4 1/2	2 17/32	153
16.0	16.6	6D160	1100.00	1 29/32	1A	J	4 1/2	2 17/32	137
17.0	17.6	6D170	1120.00	1 29/32	1A	J	4 1/2	2 17/32	175
18.0	18.6	6D180	1140.00	1 29/32	1A	J	4 1/2	2 17/32	159
20.0	20.6	6D200	1480.00	1 29/32	1A	J	4 1/2	2 17/32	185
22.0	22.6	6D220	1840.00	9/32	1A	M ^o	6 3/4	1 29/32	225
27.0	27.6	6D270	1900.00	9/32	1A	M ^o	6 3/4	1 29/32	300
33.0	33.6	6D330	2460.00	9/32	1A	M ^o	6 3/4	1 29/32	350
40.0	40.6	6D400	2980.00	9/32	1A	M ^o	6 3/4	1 29/32	460
48.0	48.6	6D480	3480.00	9/32	1A	M ^o	6 3/4	1 29/32	600
58.0	58.6	6D580	4520.00	3/16	1A	N ^o	8 1/8	5/8	760

P.D. for “D” Belts = O.D.
 *Note: M-N-P-W bushings are standard mounting only with these parts. See page 11 for installation instructions.

“D” SECTION

DIMENSIONS & GROOVES

Datum dia.	O.D.	Part No	List Price \$	F = 11 13/16 inches					
				H	Type	B	L	E	Wt
12.0	12.6	8D120	1240.00	2 5/32	1B	J	4 1/2	5 5/32	141
13.0	13.6	8D130	1260.00	2 5/32	1B	J	4 1/2	5 5/32	163
13.5	14.1	8D135	1280.00	2 5/32	1B	J	4 1/2	5 5/32	175
14.0	14.6	8D140	1320.00	2 5/32	1B	J	4 1/2	5 5/32	187
14.5	15.1	8D145	1360.00	2 5/32	1B	J	4 1/2	5 5/32	200
15.0	15.6	8D150	1380.00	2 5/32	1W	J	4 1/2	5 5/32	183
15.5	16.1	8D155	1400.00	2 5/32	1W	J	4 1/2	5 5/32	189
16.0	16.6	8D160	1560.00	2 5/32	1W	J	4 1/2	5 5/32	197
17.0	17.6	8D170	1680.00	2 5/32	1W	J	4 1/2	5 5/32	213
18.0	18.6	8D180	1820.00	2 9/32	1W	M°	6 3/4	2 25/32	255
20.0	20.6	8D200	2000.00	2 9/32	1A	M°	6 3/4	2 25/32	258
22.0	22.6	8D220	2160.00	9/32	1A	M°	6 3/4	4 25/32	266
27.0	27.6	8D270	2660.00	9/32	1A	M°	6 3/4	4 25/32	320
33.0	33.6	8D330	2840.00	9/32	1A	M°	6 3/4	4 25/32	420
40.0	40.6	8D400	3720.00	1/8	1A	N°	8 1/8	3 9/16	600
48.0	48.6	8D480	4320.00	1/8	1A	N°	8 1/8	3 9/16	750
58.0	58.6	8D580	5280.00	1/8	1A	N°	8 1/8	3 9/16	1000



TYPE 1

SHEAVES

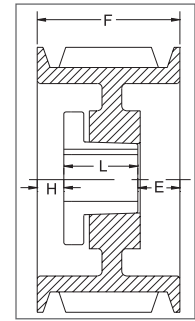
P.D. for “D” Belts = O.D.

°Note: M-N-P-W bushings are standard mounting only with these parts. See page 11 for installation instructions.

“D” SECTION

DIMENSIONS 10 GROOVES

Datum dia.	O.D.	Part No	List Price \$	F = 14 11/16 inches					
				H	Type	B	L	E	Wt
12.0	12.6	10D120	1520.00	2 9/32	1B	M ^o	6 3/4	5 21/32	166
13.0	13.6	10D130	1580.00	2 9/32	1B	M ^o	6 3/4	5 21/32	207
13.5	14.1	10D135	1660.00	2 9/32	1B	M ^o	6 3/4	5 21/32	224
14.0	14.6	10D140	1740.00	2 9/32	1B	M ^o	6 3/4	5 21/32	242
14.5	15.1	10D145	1840.00	2 9/32	1B	M ^o	6 3/4	5 21/32	260
15.0	15.6	10D150	1860.00	2 9/32	1B	M ^o	6 3/4	5 21/32	279
15.5	16.1	10D155	1880.00	2 9/32	1B	M ^o	6 3/4	5 21/32	298
16.0	16.6	10D160	1900.00	2 9/32	1B	M ^o	6 3/4	5 21/32	318
17.0	17.6	10D170	2080.00	2 9/32	1W	M ^o	6 3/4	5 21/32	307
18.0	18.6	10D180	2120.00	2 9/32	1W	M ^o	6 3/4	5 21/32	293
20.0	20.6	10D200	2380.00	2 9/32	1W	M ^o	6 3/4	5 21/32	351
22.0	22.6	10D220	2480.00	1 9/32	1A	M ^o	6 3/4	6 21/32	342
27.0	27.6	10D270	2980.00	1 9/32	1A	M ^o	6 3/4	6 21/32	415
33.0	33.6	10D330	3280.00	1 11/32	1A	N ^o	8 1/8	5 7/32	575
40.0	40.6	10D400	4300.00	1 11/32	1A	N ^o	8 1/8	5 7/32	680
48.0	48.6	10D480	5080.00	3/16	1A	P ^o	9 3/8	5 1/8	975
58.0	58.6	10D580	5880.00	3/16	1A	P ^o	9 3/8	5 1/8	1250



TYPE 1

SHEAVES

DIMENSIONS 12 GROOVES

Datum dia.	O.D.	Part No	List Price \$	F = 17 9/16 inches					
				H	Type	B	L	E	Wt
12.0	12.6	12D120	1720.00	3 9/32	1B	M ^o	6 3/4	7 17/32	187
13.0	13.6	12D130	1800.00	3 9/32	1B	M ^o	6 3/4	7 17/32	234
13.5	14.1	12D135	1860.00	3 9/32	1B	M ^o	6 3/4	7 17/32	252
14.0	14.6	12D140	1880.00	3 9/32	1B	M ^o	6 3/4	7 17/32	271
14.5	15.1	12D145	2000.00	3 9/32	1B	M ^o	6 3/4	7 17/32	290
15.0	15.6	12D150	2120.00	3 9/32	1B	M ^o	6 3/4	7 17/32	310
15.5	16.1	12D155	2180.00	3 9/32	1B	M ^o	6 3/4	7 17/32	330
16.0	16.6	12D160	2200.00	3 9/32	1B	M ^o	6 3/4	7 17/32	352
17.0	17.6	12D170	2320.00	3 15/32	1W	M ^o	6 3/4	7 11/32	365
18.0	18.6	12D180	2420.00	3 15/32	1W	M ^o	6 3/4	7 11/32	391
20.0	20.6	12D200	2760.00	3 9/32	1W	M ^o	6 3/4	7 17/32	401
22.0	22.6	12D220	2980.00	2 9/32	1A	M ^o	6 3/4	7 17/32	365
27.0	27.6	12D270	3640.00	2 1/8	1A	N ^o	8 1/8	7 5/16	505
33.0	33.6	12D330	4380.00	2 1/8	1A	N ^o	8 1/8	7 5/16	590
40.0	40.6	12D400	5040.00	3/16	1A	P ^o	9 3/8	8	925
48.0	48.6	12D480	6180.00	3/16	1A	P ^o	9 3/8	8	1150
58.0	58.6	12D580	6760.00	3/16	1A	P ^o	9 3/8	8	1500

P.D. for “D” Belts = O.D.

°Note: M-N-P-W bushings are standard mounting only with these parts. See page 11 for installation instructions.