

INSTALLATION INSTRUCTIONS

AUTO/MANUAL SWITCH Part No. ID5AMS-1

for Model ID5601-WO Inverters with IDSI-2



SAFETY WARNING! Please read carefully before proceeding.

This product should be installed and serviced by a qualified technician, electrician, or electrical maintenance person familiar with its operation and the hazards involved. Proper installation, which includes wiring, mounting in proper enclosure, fusing or other over current protection, and grounding can reduce the chance of electrical shocks, fires, or explosion in this product or products used with this product, such as electric motors, switches, coils, solenoids, and/or relays. Eye protection must be worn and insulated adjustment tools must be used when working with control under power. This product is constructed of materials (plastics, metals, carbon, silicon, etc.) which may be a potential hazard. Proper shielding, grounding and filtering of this product can reduce the emission of radio frequency interference (RFI) which may adversely affect sensitive electronic equipment. If further information is required on this product, contact the Sales Department.

This control contains electronic Start/Stop circuits that can be used to start and stop the control. However, these circuits are never to be used as safety disconnects since they are not fail-safe. Use only the AC line for this purpose.

Be sure to follow all instructions carefully. Fire and/or electrocution can result due to improper use of this product.

It is the responsibility of the equipment manufacturer and individual installer to supply this Safety Warning to the ultimate end user of this product. (1/2001)

DESCRIPTION

The Auto/Manual Switch is designed for installation on the front cover of the ID5601-WO inverter. It is used to select either the Main Speed Potentiometer for "manual operation" or a remote voltage following analog signal for "automatic operation." It is suggested that the IDSI-2 Signal Isolator / Run Relay option be used with the Auto/Manual Switch to provide signal isolation between the signal source and the ID5601-WO.

MOUNTING



WARNING! Make sure that the AC line is disconnected before installing the Auto/Manual Switch.

1. Remove the rubber hole plug assembly that covers the Auto/Manual position by unscrewing the retainer nut that is located on the inside of the front cover.
2. Align the switch keyway with the key in the front cover hole and mount the Auto/Manual Switch assembly using the rubber switch boot that is provided. Tighten, but do not over tighten, the rubber switch boot hex nut. See Figure 1.

Note: The switch bushing should protrude approximately 0.15" (3.8mm) through the front cover.

3. Install the IDSI-2 onto the ID5601-WO PC board in accordance with the IDSI-2 Installation and Operating Instructions Manual.

WIRING

1. Remove the jumper assembly that is installed on the FWD and STOP terminals of the ID5601-WO PC board. Using pliers, gently rock the female terminals back and forth horizontally while pulling them upward. See Figure 2.

continued on reverse side...

FIGURE 1 – MOUNTING THE AUTO/MANUAL SWITCH

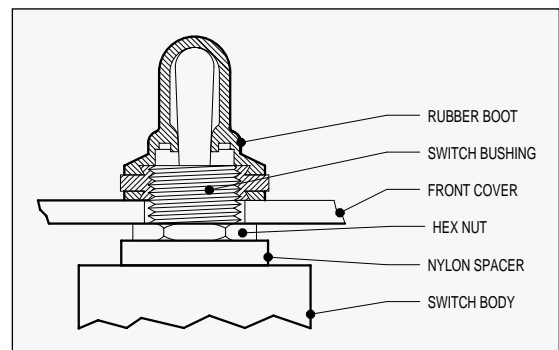
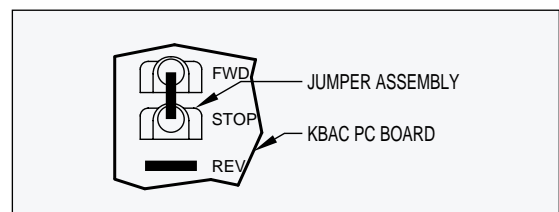


FIGURE 2 – JUMPER ASSEMBLY



INSTALLATION INSTRUCTIONS (...continued)

AUTO/MANUAL SWITCH Part No. ID5AMS-1

for Model ID5601-WO Inverters with IDSI-2

2. Remove the orange Main Speed Potentiometer wire that is connected to the P2 terminal of the ID5601-WO PC board. Using pliers, gently rock the female terminal back and forth vertically while pulling it upward. See Figure 3
3. Install the blue wire from the center of the Auto/Manual Switch to the P2 terminal on the ID5601-WO PC board. See Figure 4.
4. Install the orange wire from the Main Speed Potentiometer (removed from step 2) to the top terminal of the Auto/Manual Switch. See Figure 4.
5. Install the green wire from the IDSI-2 CONN1 to the lower terminal of the Auto/Manual Switch. See Figure 4.

FIGURE 3 – MAIN SPEED POTENTIOMETER WIRING

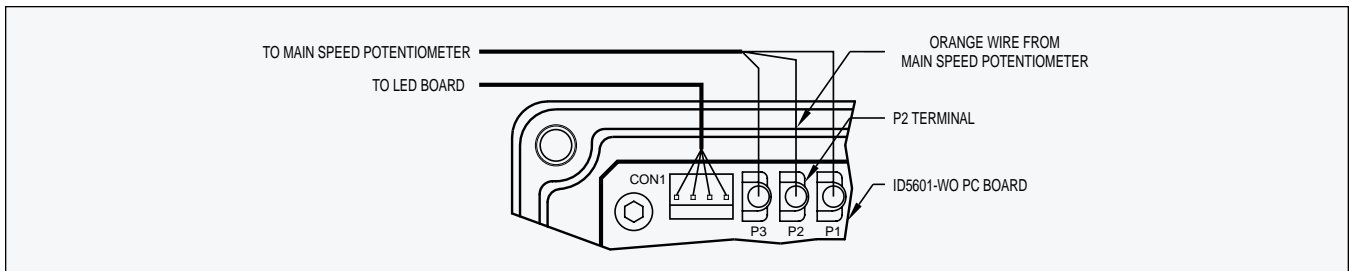


FIGURE 4 – IDSI-2/ID5601-WO WITH AUTO/MANUAL SWITCH CONNECTION DIAGRAM

