

BC158 AUTO/MANUAL INSTALLATION KIT FOR MODEL BC154 & BCWD140 WITH MODEL SIGNAL ISOLATOR BC145

INSTALLATION INSTRUCTIONS

Warning! *Be sure to read safety warning before proceeding. Electrocution may result if you do not read safety warning.*

SAFETY WARNING - PLEASE READ CAREFULLY

This product should be installed and serviced by a qualified technician, electrician or electrical maintenance person familiar with its operation and the hazards involved. Proper installation which includes wiring, mounting in proper enclosure, fusing or other overcurrent protection and grounding, can reduce the chance of electric shock, fire or explosion in this product or products used with this product, such as electric motors, switches, coils, solenoids and/or relays. Eye protection must be worn and insulated adjustment tools must be used when working with control under power. This product is constructed of materials (plastics, metals, carbon, silicon, etc.) which may be a potential hazard. Proper shielding, grounding and filtering of this product can reduce the emission of radio frequency interference (RF) which may adversely affect sensitive electronic equipment. If information is required on this product, contact our factory. It is the responsibility of the equipment manufacturer and individual installer to supply this safety warning to the ultimate user of this product. (SW effective 11/92)

This control contains Start/Stop and Inhibit circuits which can be used to start and stop the control. However, these circuits are never to be used as safety disconnects since they are not fail-safe. Use only the AC line for this purpose.

The input circuits of this control (potentiometer, Start/Stop, Inhibit) are not isolated from AC line. Be sure to follow all instructions carefully. Fire and/or electrocution may result due to improper use of this product.

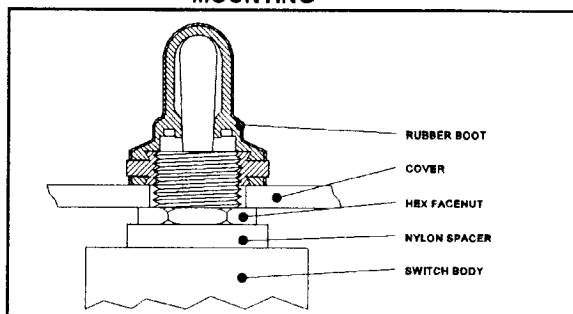
Instructions for installing Model BC145 Signal Isolator into Model BC154 (or BCWD140) controller with Auto/Manual Switch - Use Installation Kit BC158.

The BC145 Signal Isolator can be installed in the BC154 (or BCWD140) which provides complete input signal isolation. The Installation Kit contains the necessary components to install the Signal Isolator in the BC154 (or BCWD140) in a simple signal following mode or in a signal following Automatic /Manual mode. In the manual mode the process signal is disconnected and the main potentiometer is used. The Automatic/Manual system is desirable since the equipment can be manually operated if the process signal is temporarily lost.

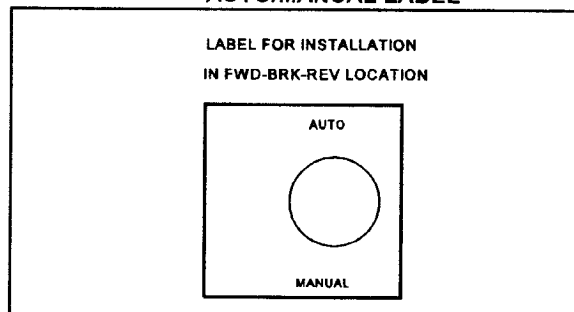
MOUNTING

1. Install the BC145 Signal Isolator on the 4 bosses in the cover of the BC154 (or BCWD140) using the (4) 6x32 screws. (Be sure the terminal block of the BC145 faces away from the cover hinge.) The BC145 will not mount in a BC154 or BCWD140 that uses the Fwd-Brake-Rev Switch. The board will need external mounting in an appropriate enclosure.
2. If the Auto/Manual Switch is to be installed, the Forward-Brake-Reverse Switch location on the BC154 (or BCWD140) front cover is to be used. Therefore, the rubber hole plug must be removed by unscrewing the rear retaining nut.
3. Install the Auto/Manual label over the mounting hole. Remove the adhesive backing and be sure to center the label over the mounting hole which will allow for proper seating of the rubber boot.
4. Install the Auto/Manual switch assembly into the front cover making sure the key in the hole lines up with the keyway in the switch bushing. Be sure the hex nut supplied is installed at the base of the switch bushing before inserting switch into the BC154 (or BCWD140) cover.
5. Install the rubber switch boot with integral hex nut over switch lever. The switch bushing threads should protrude no more than .25" (6.4mm) or no less than .10" (2.6mm) through the front cover for proper installation. Tighten the switch boot so that the bottom seals against the cover label. Do not overtighten.

MOUNTING

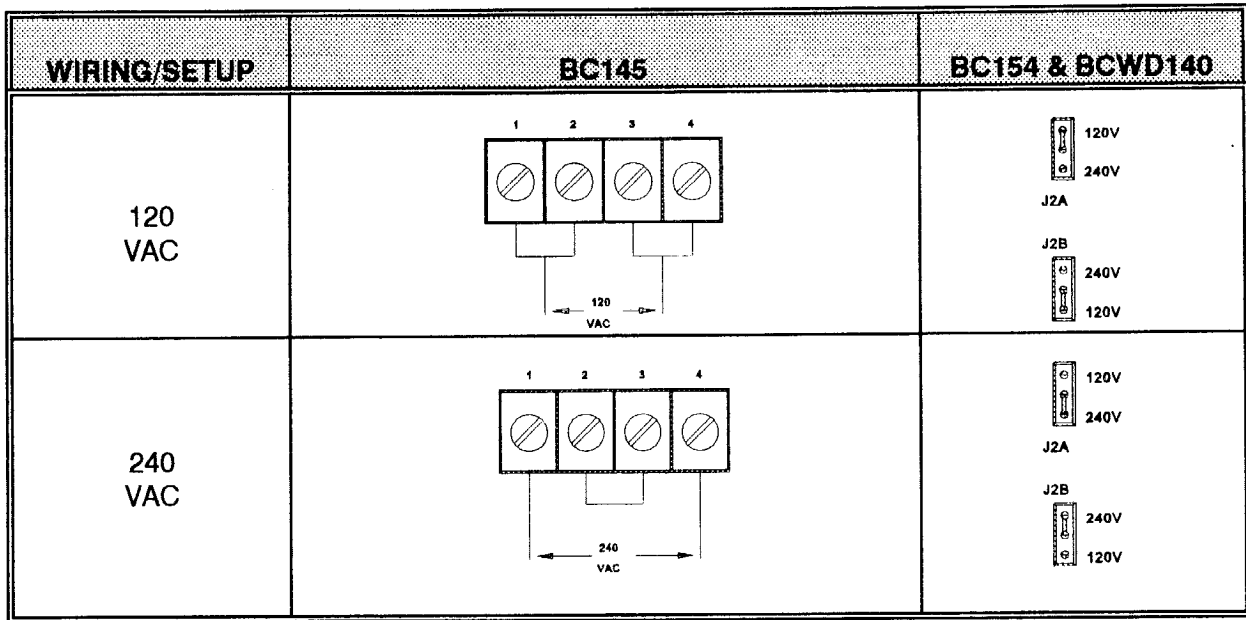


AUTO/MANUAL LABEL

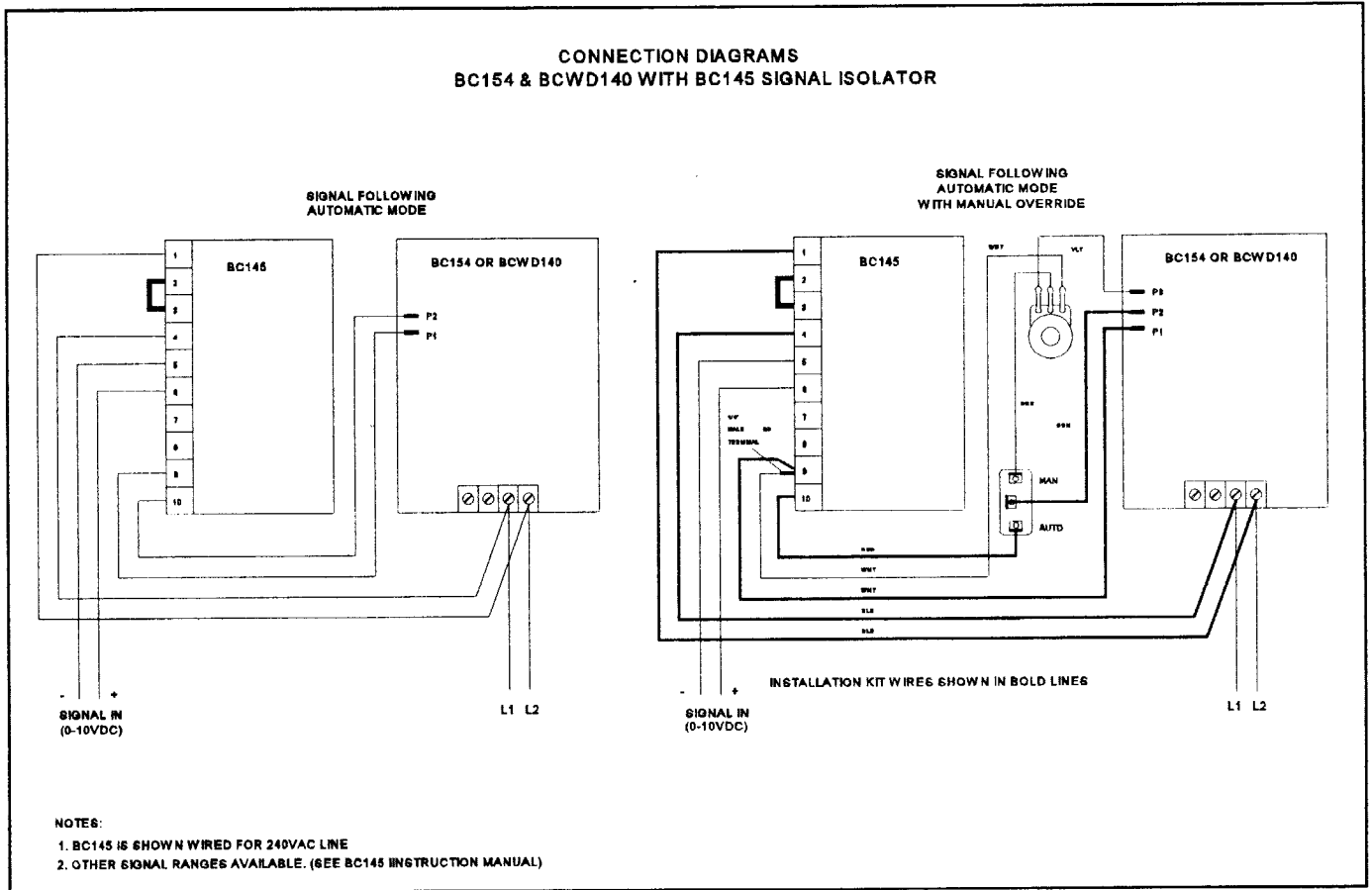


WIRING

IMPORTANT! Be sure the BC154 (or BCWD140) and the BC145 are both wired and set for the same AC line input voltage (120 or 240VAC) or catastrophic failure can result.



Wire Signal Isolator in accordance with connection diagrams as shown: (Refer to the BC145 Installation and Operation Instruction Manual for complete details).



NOTE: When wiring BC145 for Auto/Man operation it is necessary to install a 1/4" male Q-D terminal on position "9" of the BC145 terminal block.