

BC245

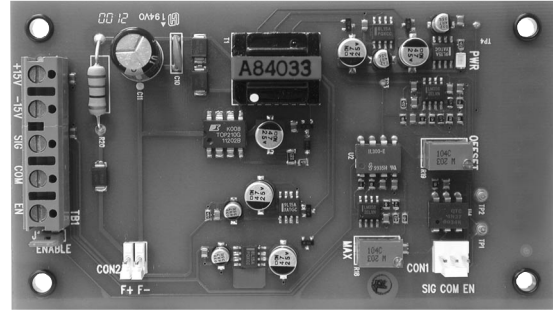
BIPOLAR SIGNAL ISOLATOR

for use with the
BC254 Full-Wave 4-Quadrant
Regenerative Drive

Provides isolation
between non-isolated signal sources
and the BC254



Pending



BC245

STANDARD FEATURES

- **Isolated Switching:** Provides isolation for PLC open collector or contact switching.
- **Isolated +15V Power Supply:** Used to power a transducer or to supply voltage for potentiometer operation.
- **Enable:** Used to start and stop the control electronically with a contact closure.
- **Accepts a Wide Range of Voltage Input Signals.**
- **Power On LED.**

TRIMPOT ADJUSTMENTS (Multi-Turn)

- **Maximum Speed (MAX)** • **Offset (OFFSET)**

OPTIONAL ACCESSORY

- **Auto/Manual Switch (BC258):** Selects a signal input from either the SIRC Signal Isolator or the Main Speed Potentiometer.

GENERAL PERFORMANCE SPECIFICATIONS

Parameter	Specification
Input Voltage Range (Volts DC) ¹	0 - ±10 thru ±25
Maximum Speed Trimpot (MAX) Range (with 10 Volts DC Input) (% Base Speed) ²	70 - 110
Offset Trimpot (OFFSET) Range (with 0 Volts DC Input) (% Base Speed) ³	0 - ±50
Forward and Reverse Input Switch Types	Dry Contact or Open Collector
Power Supply (±15V) Maximum Load Current Rating (milliamps DC)	25
Potentiometer Operation (kΩ)	5
Input/Output Linearity (%)	0.1
Thermal Drift (millivolts per °C)	0.15
Operating Temperature Range (°C)	0 - 45

Note: (Factory Settings): (1) 0 - 10, (2) 100, (3) 0

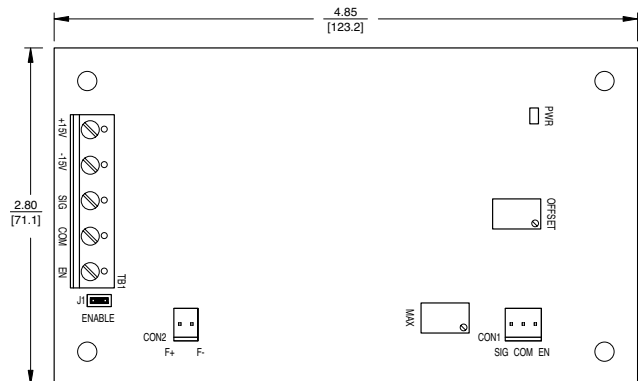
DESCRIPTION

The BC245 is used with the BC254 Full-Wave 4-Quadrant Regenerative Drive to isolate, amplify and condition DC voltage signals from any source (tach-generators, transducers, PLCs and potentiometers). It also provides an isolated input to control motor direction and an isolated power supply for transducer or potentiometer operation. All input connections are isolated from the AC line and motor wiring. The BC245 installs easily on the inside front cover and is wired with quick-connect terminals.

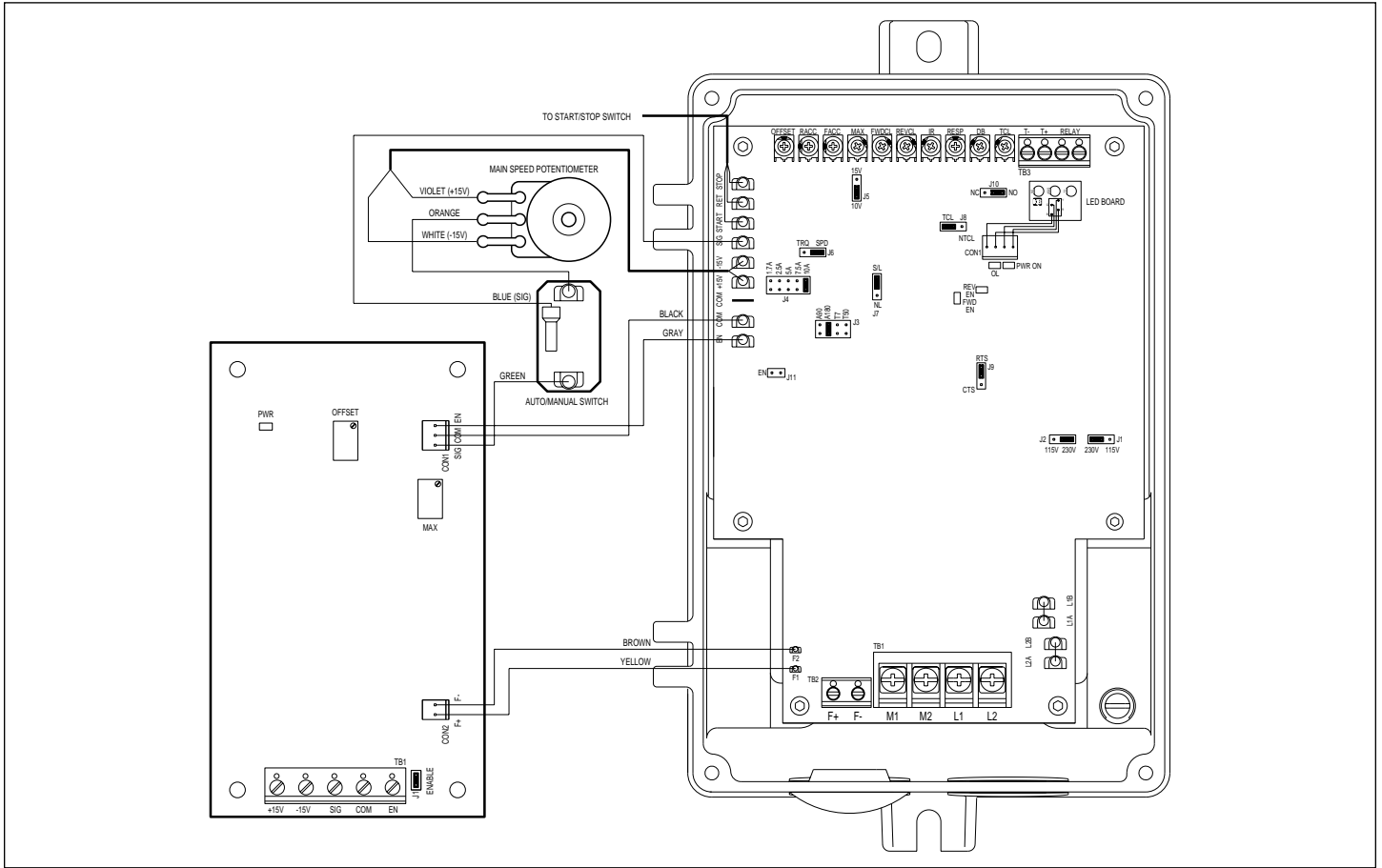
The BC245 features include a power on LED, barrier terminal block to facilitate wiring, adjustable multi-turn trimpots (MAX, OFFSET) and an enable circuit to start and stop the control electronically with a contact closure.

An optional accessory for use with the BC245 and BC254 is an Auto/Manual Switch (BC258) which selects a signal input from either the BC245 Signal Isolator or the Main Speed Potentiometer.

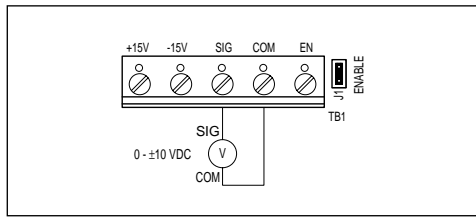
MECHANICAL SPECIFICATIONS (Inches / [mm]) and CONTROL LAYOUT



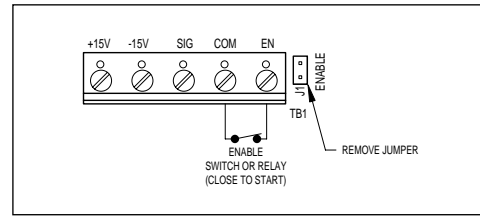
BC245 & BC254 WITH AUTO/MANUAL SWITCH CONNECTION DIAGRAM



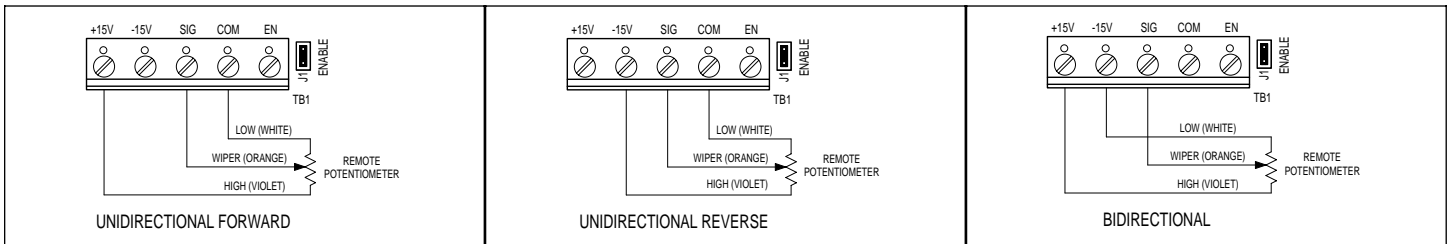
VOLTAGE FOLLOWING CONNECTION



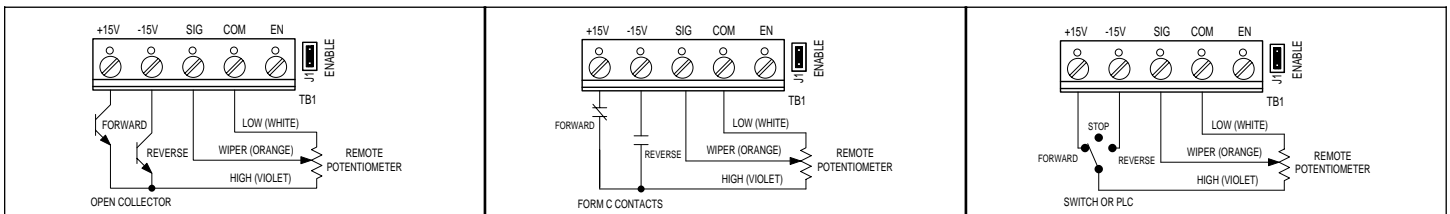
ENABLE CIRCUIT CONNECTION



REMOTE POTENTIOMETER CONNECTIONS



REVERSING CONTACT CONNECTIONS



BALDOR ELECTRIC COMPANY
 P.O. Box 2400 Ft. Smith, AR 72902-2400
 (479) 646-4711 • Fax (479) 648-5792