

# Catalog No. BC258 Auto/Manual Switch for BC254 Control Installation Instructions



## SAFETY WARNING! Please read carefully before proceeding.

This product should be installed and serviced by a qualified technician, electrician, or electrical maintenance person familiar with its operation and the hazards involved. Proper installation, which includes wiring, mounting in proper enclosure, fusing or other overcurrent protection, and grounding can reduce the chance of electrical shocks, fires, or explosion in this product or products used with this product, such as electric motors, switches, coils, solenoids, and/or relays. Eye protection must be worn and insulated adjustment tools must be used when working with control under power. This product is constructed of materials (plastics, metals, carbon, silicon, etc.) which may be a potential hazard. Proper shielding, grounding and filtering of this product can reduce the emission of radio frequency interference (RFI) which may adversely affect sensitive electronic equipment. If further information is required on this product, contact the Sales Department.

It is the responsibility of the equipment manufacturer and individual installer to supply this Safety Warning to the ultimate end user of this product. (1/2001)

### DESCRIPTION

The Auto/Manual Switch assembly is designed for installation on the front cover of the BC254. It is used to select either the Main Speed Potentiometer for "manual operation" or a remote voltage following analog signal for "automatic operation." It is suggested that the Bipolar Signal Isolator option (Catalog No. BC245) be used with the Auto/Manual Switch assembly to provide signal isolation between the signal source and the BC254. The Auto/Manual Switch assembly contains a blue wire which is terminated with 0.250" female quick-connect terminals.

FIGURE 1 - MOUNTING THE AUTO/MANUAL SWITCH

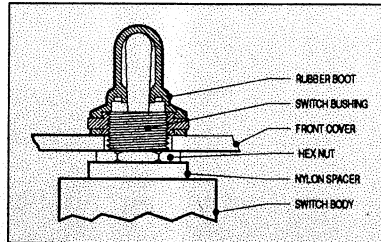
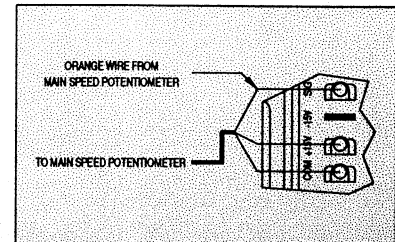


FIGURE 2 - MAIN SPEED POTENTIOMETER WIRING



### MOUNTING

**WARNING!** Make sure that the AC line is disconnected before installing the Auto/Manual Switch assembly.

1. Remove the rubber hole plug assembly that covers the Auto/Manual position by unscrewing the retainer nut that is located on the inside of the front cover.
2. Align the switch in the front cover hole and mount the Auto/Manual Switch assembly using the rubber boot that is provided. Do not over tighten the rubber boot hex nut. See figure 1.

**Note:** The switch bushing should protrude approximately 0.15" (3.8mm) through the front cover.

3. Install the BC245 onto the BC254 in accordance with the BC245 installation and Operating Instructions Manual.

### WIRING

1. Remove the orange Main Speed Potentiometer wire that is connected to the SIG terminal of the BC254 PC board. Using pliers, gently rock the female terminal back and forth vertically while pulling it upward. See figure 2.
2. Install the orange wire from the Main Speed Potentiometer assembly (removed in step 1) to the top terminal of the Auto/Manual Switch assembly. See figure 3.
3. Install the blue wire from the center of the Auto/Manual Switch assembly to the SIG terminal on the BC254 PC board. See figure 3.
4. Install the green wire from the BC245 CON1 to the lower terminal of the Auto/Manual Switch assembly. See figure 3.

FIGURE 3 - CONNECTION DIAGRAM

