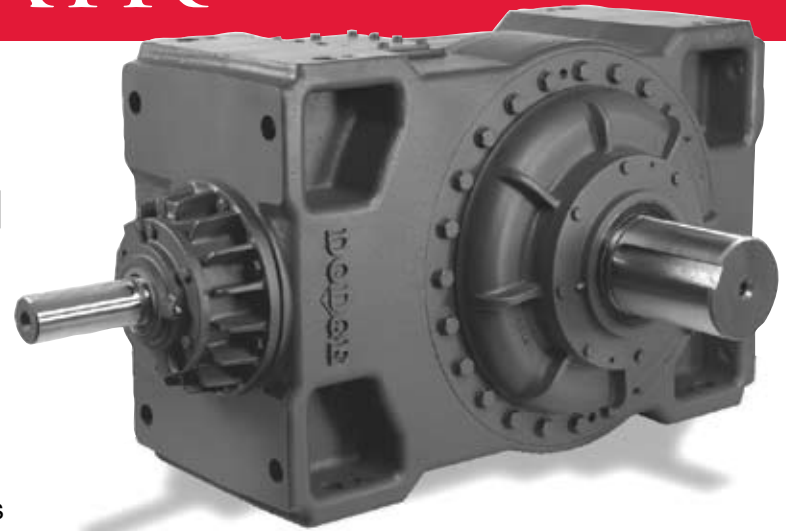


## THE HIGH HORSEPOWER EXTRA TOUGH REDUCER IN THE DODGE® FAMILY

### Rugged Design Features:

The MagnaGear XTR® is manufactured to provide maximum reliability in tough applications and to improve your total cost of ownership. The innovative design incorporates state of the art techniques to meet the high standards expected of DODGE reducers. MagnaGear XTR® provides the perfect solution for your high torque application needs.



## MAGNAGEAR XTR®

### Versatile Performance

- Parallel shaft or right angle configurations are available
- Torque capacities from 100,000 to 920,000 lb-in
- Available in solid or hollow shaft output
- Global product design to fit all markets
- Modular design for reversibility and multiple mounting configurations
  - Minimizes spare requirements
  - 4-sided mounting configurations
- Can be used with a variety of soft start mechanisms including VFD and fluid couplings
- Multiple mounting configurations are available
  - Base mounting
  - Swing base mounting
  - Tunnel housings

### Rugged Design

- Designed to meet or exceed AGMA and international standards
- Gearing is carburized, hardened, and precision ground
- The MagnaGear sealing system is designed for long leak free life in tough environments
  - Tandem contact lip seals with excluder seal and purgeable grease cavity prevents leaks and contamination
  - Premium seal material and design means longer life than Nitrile or Viton seals without the abrasiveness and shaft grooving inherent to Viton
  - Chemical compatibility for use with today's synthetic oils
  - Functional over a wide temperature range from -40°F to over 300°F
- All bearings exceed AGMA standards for L10 life
- Rugged cast iron housings

### Design Considerations

- Focus on rugged, heavy duty design for maximum reliability
- Power dense design
- Components are power matched for optimum performance at a lower installed cost
- Proven planetary design is utilized in sizes over 390,000 lb-in to provide a compact, durable, light weight, economic solution for high torque applications

### Engineered Accessories

A complete line of engineered accessories including:

- Baseplates
- Swing base mounts
- Tunnel drive configurations
- Torque arms
- Internal lift-off style backstops
- Moment couplings
- Shaft fans
- Electric fans

## MagnaGear XTR®

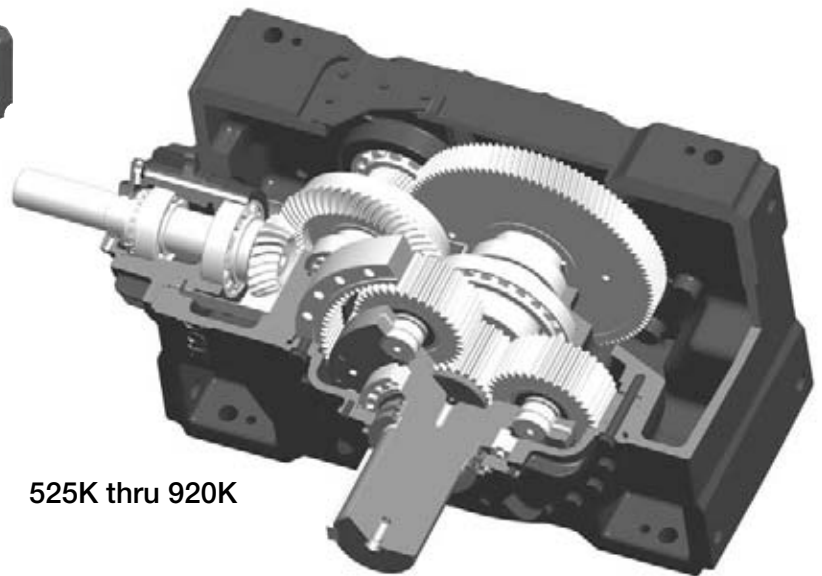
The perfect solution to your conveying, pumping or other material handling needs. Optimum performance at a lower cost – why settle for less than DODGE quality and reliability.

| MagnaGear XTR Model | Nominal Output Torque<br>lb-in @ 1.0 SF | Nominal Output Torque<br>N-m @ 1.0 SF |
|---------------------|---|---------------------------------------|
| 100K                | 100,000                                 | 11,300                                |
| 150K                | 150,000                                 | 16,950                                |
| 210K                | 210,000                                 | 23,750                                |
| 285K                | 285,000                                 | 32,200                                |
| 390K                | 390,000                                 | 44,065                                |
| 525K                | 525,000                                 | 59,320                                |
| 700K                | 700,000                                 | 79,090                                |
| 920K                | 920,000                                 | 103,950                               |

Various ratios are available ranging from 8:1 to 63:1 depending on model & configuration. For more information on MagnaGear XTR® contact your local Baldor•Dodge Field Sales Engineer.



100K thru 390K



525K thru 920K

# **BALDOR**

### World Headquarters

P.O. Box 2400, Fort Smith, AR 72902-2400 U.S.A., Ph: (1) 479.646.4711, Fax (1) 479.648.5792, International Fax (1) 479.648.5895

### Baldor - Dodge

6040 Ponders Court, Greenville, SC 29615-4617 U.S.A., Ph: (1) 864.297.4800, Fax: (1) 864.281.2433

[www.baldor.com](http://www.baldor.com)