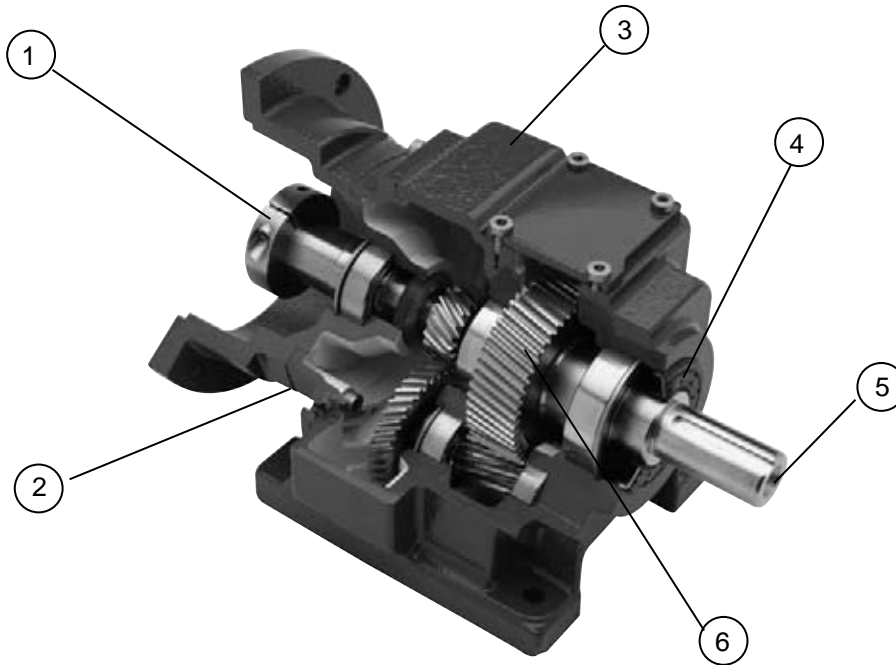


FEATURES/BENEFITS



QUANTIS ILH C-Face Reducer / Integral Gearmotor



1. Multiple input options
 - C-Face adapters for mounting of NEMA and IEC motors
 - Integral Gearmotors
 - Separate Input
2. All gearboxes are factory filled with Mobilgear 600 XP 220
3. Reducer housings are constructed of class 30 gray iron with cast internal ribbing for added strength
4. Spring loaded double lip seals of nitrile rubber (NBR) material. All seals are rubber coated to eliminate seal-to-bore joint leakage.
5. High strength carbon steel shafts in inch or metric diameters
6. Gearing is of single helical design and ground to provide ellipsoid tooth which eliminates tooth wearing and assures meshing in the strongest tooth area
 - Gear material is alloy steel
 - Gears are case hardened and ground to AGMA class 11
 - 20 degree pressure angle to minimize noise
 - 98% efficient per stage of gearing

FEATURES/BENEFITS

QUANTIS

QUANTIS ILH

The QUANTIS In-Line Helical (ILH) product line offers a full line of modular gear drives engineered for flexibility, increased torque density in a compact housing configuration and increased horsepower capability. QUANTIS ILH is available in eight sizes, ILH38 - ILH168.

Ratings:

Ratio: 1.41:1 - 359:1
 Torque: 116 in-lbs - 123914 in lbs
 Input Power: 1/4 Hp - 75 Hp

Input Options:

Clamp Collar: Compact / space saving c-face adapter which allows the mounting of both NEMA and IEC motors
 NEMA motors: 56C - 360TC
 IEC motors: 71D - 200D

3 Piece Coupled

Allows for easy separation of the c-face motor and is excellent for applications requiring frequent stops / starts
 NEMA motors: 56C - 360TC
 IEC motors: 80D - 250D

Integral Gearmotor

1/4 HP - 10 Hp
 IP 55 enclosure
 CSA approved
 Class F Insulation
 Integral motors suitable for VFD's (variable frequency drives)
 6:1 constant torque
 High cycling brakemotor

Separate Inputs

Suitable for use with belt, chain drive or direct coupled motor connections
 Input shafts available with either inch or metric diameters

Output Options:

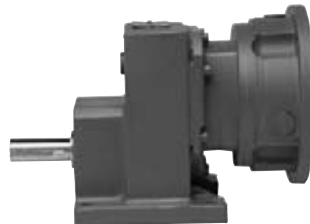
Solid Output Shaft Inch or metric diameters
 Flange B5 or B14 Flange

Housing Configurations:

Foot Mounted
 Flange Mounted



ILH - Clamp Collar Reducer



ILH - Clamp Collar Reducer, Single Reduction

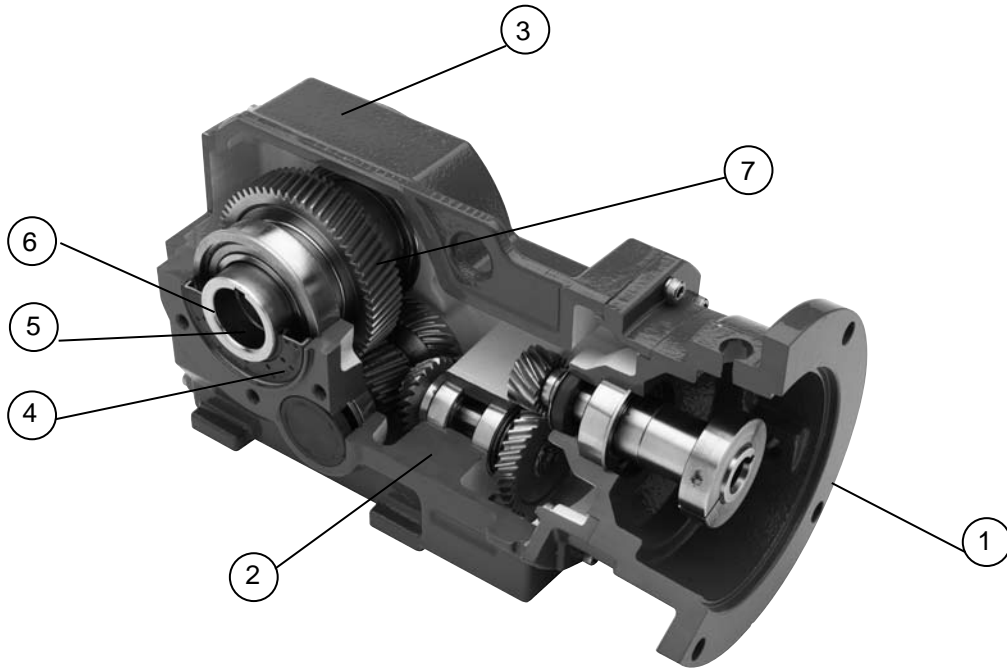
QUANTIS GOLD

ILH

RHB

MSM

QUANTIS RHB C-Face Reducer / Integral Gearmotor



1. Multiple input options
 - C-Face adapters for mounting of NEMA and IEC motors
 - Integral Gearmotors
 - Separate Input
2. All gearboxes are factory filled with Mobilgear 600 XP 220
3. Reducer housings are constructed of class 30 gray iron with cast internal ribbing for added strength
4. Spring loaded double lip seals of nitrile rubber (NBR) material. All seals are rubber coated to eliminate seal-to-bore joint leakage.
5. High strength carbon steel shafts in inch or metric diameters
6. Multiple output options
 - Single or double output shafts
 - Straight hollow bore
 - Tapered hollow bore
 - Shrink disk
7. Gearing is of single helical design and ground to provide ellipsoid tooth which eliminates tooth wearing and assures meshing in the strongest tooth area. RHB reducers also utilize spiral bevel gearing
 - Gear material is alloy steel
 - Helical gears are case hardened and ground to AGMA class 11. Bevel gears are hardened and lapped
 - 20 degree pressure angle to minimize noise
 - 94% efficient

FEATURES/BENEFITS

QUANTIS

QUANTIS RHB

The QUANTIS Right Angle Helical Bevel (RHB) product line features a helical-bevel-helical gear train that offers cost-effective, high and low speed solutions with efficiency ratings up to 94%. QUANTIS RHB is available in eight sizes, RHB38 - RHB168.

Ratings:

Ratio:	4.83:1 - 307:1
Torque:	411 in-lbs - 119489 in-lbs
Input Power:	1/4 Hp - 75 Hp

Input Options:

Clamp Collar:	Compact / space saving c-face adapter which allows the mounting of both NEMA and IEC motors NEMA motors: 56C - 360TC IEC motors: 71D - 200D
---------------	---

QUANTIS GOLD

3 Piece Coupled	Allows for easy separation of the c-face motor and is excellent for applications requiring frequent stops / starts NEMA motors: 56C - 360TC IEC motors: 80D - 250D
-----------------	--

ILH

Integral Gearmotor	1/4 HP - 10 Hp IP 55 enclosure CSA approved Class F Insulation Integral motors suitable for VFD's (variable frequency drives) 6:1 constant torque High cycling brakemotor
--------------------	---

RHB

Separate Inputs	Suitable for use with belt, chain drive or direct coupled motor connections Input shafts available with either inch or metric diameters
-----------------	--

Output Options:

Single & Double Output Shaft	Inch or metric diameters
Straight Hollow Bore	Inch or metric diameters
Twin Tapered Bushing	Inch or metric diameters, standard or short shaft bushings
Shrink Disk	Metric diameters
Flange	B5 or B14 Flange
CEMA Screw Conveyor	Standard or XT harsh duty adapters, CEMA 3 hole drive shafts

MSM

Housing Configurations:

Foot Mounted
Flange Mounted



RHB - B14 Flange Mounted, Clamp Collar, Tapered Bushed Reducer

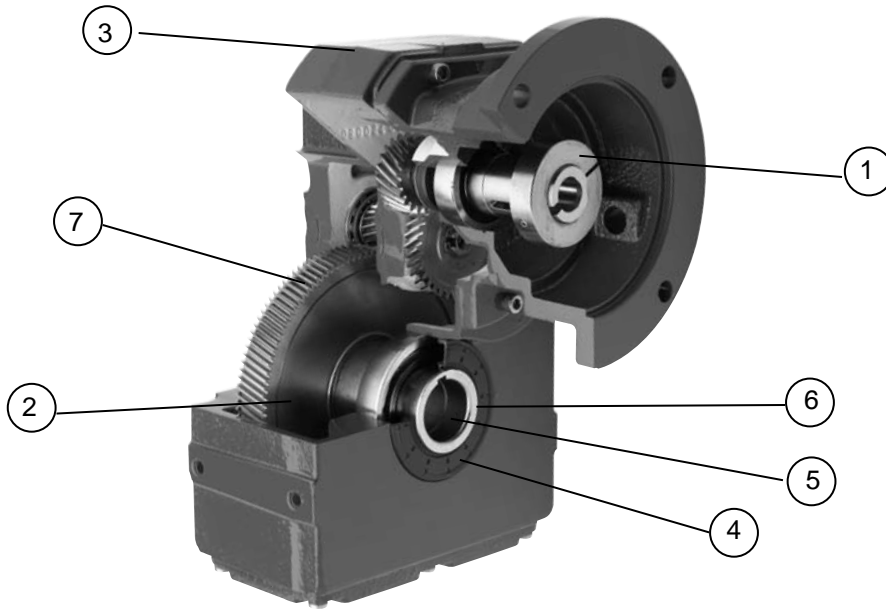


RHB - B5 Flange Mounted Reducer

FEATURES/BENEFITS



QUANTIS MSM C-Face Reducer / Integral Gearmotor



1. Multiple input options
 - C-Face adapters for mounting of NEMA and IEC motors
 - Integral Gearmotors
 - Separate Input
2. All gearboxes are factory filled with Mobilgear 600 XP 220
3. Reducer housings are constructed of class 30 gray iron with cast internal ribbing for added strength
4. Spring loaded double lip seals of nitrile rubber (NBR) material. All seals are rubber coated to eliminate seal-to-bore joint leakage.
5. High strength carbon steel shafts in inch or metric diameters
6. Multiple output options
 - Solid shaft
 - Straight hollow bore
 - Tapered hollow bore
 - Shrink disk
7. Gearing is of single helical design and ground to provide ellipsoid tooth which eliminates tooth wearing and assures meshing in the strongest tooth area.
 - Gear material is alloy steel
 - Gears are case hardened and ground to AGMA class 11
 - 20 degree pressure angle to minimize noise
 - 98% efficient per stage of gearing

FEATURES/BENEFITS

QUANTIS

QUANTIS MSM

The QUANTIS Motorized Shaft Mount (MSM) product line features a universal housing style for versatile mounting capability. QUANTIS MSM is available in eight sizes, MSM38 - MSM168.

Ratings:

Ratio:	6.65:1 - 350:1
Torque:	712 in-lbs - 118603 in-lbs
Input Power:	1/4 Hp - 75 Hp

QUANTIS GOLD

Input Options:

Clamp Collar:	Compact / space saving c-face adapter which allows the mounting of both NEMA and IEC motors NEMA motors: 56C - 360TC IEC motors: 71D - 200D
---------------	---

3 Piece Coupled	Allows for easy separation of the c-face motor and is excellent for applications requiring frequent stops / starts NEMA motors: 56C - 360TC IEC motors: 80D - 250D
-----------------	--

ILH

Integral Gearmotor	1/4 Hp - 10 Hp IP 55 enclosure CSA approved Class F Insulation Integral motors suitable for VFD's (variable frequency drives) 6:1 constant torque High cycling brakemotor
--------------------	---

Separate Inputs	Suitable for use with belt, chain drive or direct coupled motor connections Input shafts available with either inch or metric diameters
-----------------	--

RHB

Output Options:

Single Output Shaft	Inch or metric diameters
Straight Hollow Bore	Inch or metric diameters
Twin Tapered Bushing	Inch or metric diameters, standard or short shaft bushings
Shrink Disk	Metric diameters
Flange	B5 or B14 Flange
CEMA Screw Conveyor	Standard or XT harsh duty adapters, CEMA 3 hole drive shafts

Housing Configurations:

Universal Mounting

MSM



MSM - Clamp Collar Reducer

QUANTIS Accessories

XT Harsh Duty Output Seal

- Multiple-lip design
- Rubber coated inner and outer ring
- Vertical flange on inner sleeve protects the lip from high pressure washdown
- Two dirt excluder lips which fling dirt away and provide a labyrinth
- Best protection for washdown and abrasive materials



Backstop

- Helps prevent the reverse rotation in high stop-start loads and results in less wear and longer life.
- It's centrifugal throw out design eliminates sprag sliding and reduces wear
- It operates with standard and EP lubricants and requires no external lubrication
- For use with 3 piece coupling and separate inputs



RHB Torque Arm Bracket

- RHB Torque Arm Bracket (K) includes bracket and fasteners for shaft mounted applications utilizing the "BF" style housing



RHB Tie Rod Kit

- RHB Tie Rod Kit (KR) includes mounting bracket, adjustable length torque arm and fulcrum with fasteners for shaft mounted applications utilizing the "BF" style housing



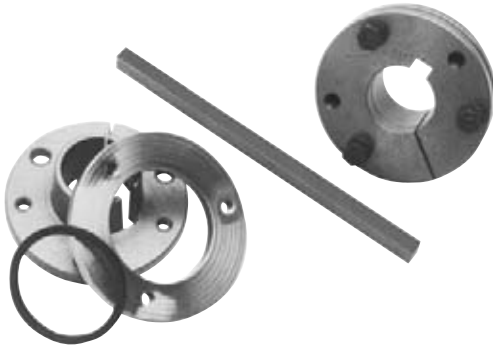
FEATURES/BENEFITS

QUANTIS

QUANTIS Accessories

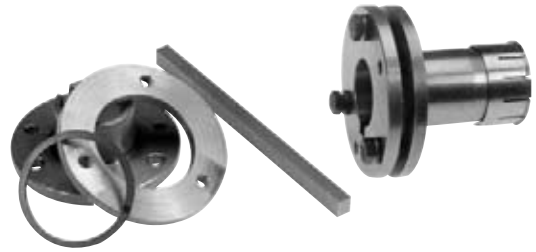
Standard Twin Tapered Bushing Kit

- An easy on, easy off, no wobble bushing system
- Features a fully split, ductile iron, 8-degree taper and reliable twin support
- Inch and metric bores



Short Shaft Twin Tapered Bushing Kit

- Eliminates the need for full length shafts
- Inch and metric bores



QUANTIS GOLD

ILH

ILH Adjustable Slide Base

- Positions the reducer, proving simplified installation and servicing of belt and chain drives



RHB

MSM