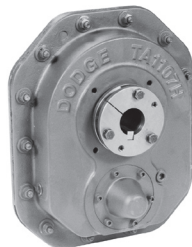


REFERENCE GUIDE

TORQUE-ARM II Shaft Mount Reducers

Page G1-1

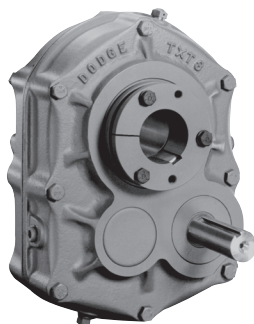
- 12 new reducer sizes with modular accessories
- All reducers can be shaft mounted, screw conveyor, vertical, and flange mounted
- Up through 400 HP
- Torque ratings through 500,000 lb-in
- Standard 5, 9, 15, 25, and up to 40:1 gear ratios
- Nearly 300:1 speed reduction with V-belt drives
- Bushing bores: 1" through 7"
- All-new, highly efficient helical gearing design
- Meets or exceeds AGMA standards, including 5000 hours L10 life and 25,000 average life
- New metal shield sealing system with excluder lip
- Smooth, rugged Class 30 cast-iron housings with pry slots
- New 36-month/18-month warranty protection



TXT TORQUE-ARM Shaft Mount Reducers

Page G2-1

- Exclusive twin tapered bushings
- Rugged cast-iron efficient
- Precision, high-quality helical gearing
- Reliable anti-friction bearings and seals
- Efficient splash lubrication
- Meets/exceeds AGMA standards
- 100% factory noise and leak tested



Capabilities & Mounting

- Standard ratios: 5, 9, 15, and 25:1
- Ratios up to 210:1 with V-belts
- Fractional to 700 HP
- Output speeds through 400 RPM
- Optional flange mount and vertical shaft application
- Available with hydraulic motor input

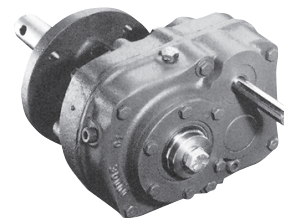
Accessories

- Motor mounts
- Bushing assemblies
- Backstops
- Auxiliary seal kits
- Belt guards
- Cooling fans
- Harsh duty accessories

SCXT Screw Conveyor Shaft Mount Reducers

Page G2-81

- Industry standard, high quality, drive mounting
- Adapter conforms to any CEMA trough ends
- Sealing system alternatives in standard adapter
 - Seals
 - Waste packing
 - Braided felt seal
- Rugged, high-thrust roller bearings
- Conforms to CEMA standards
- CEMA high-strength shafts, 2- and 3-bolt



Capabilities

- Fractional to 75 HP
- Standard ratios: 5, 9, 15, and 25:1
- 1-1/2" to 3-7/16" CEMA drive shafts
- Output speeds through 400 RPM
- Available with hydraulic motor input
- Vertical and incline mounting capability

Accessories

- Standard C and adjustable packing gland adapters
- Drive shafts - standard steel and stainless steel
- Motor mounts
- Belt guards
- Auxiliary seal kits
- Cooling fans

REFERENCE GUIDE

MAXUM Concentric Speed Reducers

Page G3-1

- Compact, power-dense design
- Precision-machined, cast-iron housing
- Highly efficient AGMA-rated helical gearing
- Heavy duty tapered roller bearing design
- Metallic double-lip seals—input/output
- Full line of accessories available
- SO 9002 certified



Features

- 8 sizes
- Fractional to 1600 HP
- Ratios: 2.25 to 194.6
- Up to 502,000 (in-lb) torque
- Mounting flexibility
 - Direct coupled
 - Top mount
 - Scoop mount
 - Heavy duty base plate

Accessories

- Backstops
- Slide base
- Cooling fans
- Auxiliary seal kits
- Heat exchanger cooling package
- Paint options
- XT filter breather
- XT enclosed breather
- XT Impro machine seal
- Coupling and belt guards
- Oil sight gauge
- Sensory devices

TIGEAR-2 Speed Reducers

Page G4-1

- Single-worm with quill, separate or 3-piece coupled input
- Totally enclosed, ventless design that is maintenance free
- 10 case sizes 1.33" to 4.75" center distances
- 5:1 to 60:1 reductions
- Solid or hollow output
- GRIP TIGHT bushing system available
- E-Z KLEEN design available
- Cast iron construction that is durable and corrosion resistant
- Factory filled with synthetic lubricant



REFERENCE GUIDE

Also See These Publications For Additional Gearing Information

Gearing Reference Guide

TORQUE-ARM II



MAGNAGEAR XTR REDUCERS CA1610

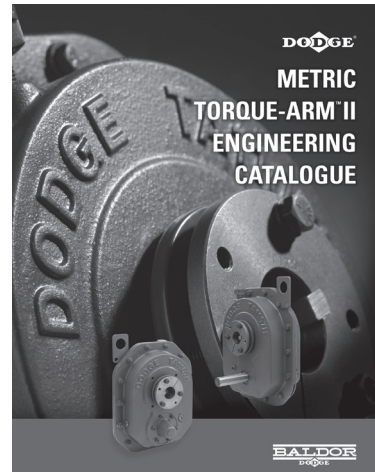
- 8 Case sizes
- Parallel and Right Angle configurations
- Base or Shaft mounted
- Solid or hollow shaft output
- Torque ratings up to 1,000,000 in/lbs

TORQUE-ARM



Motorized Torque Arm II CA1611

- Heavy Duty right angle gear reducer
- 3 Case sizes
- AGMA rated design
- Uses standard TAIL accessories
- Twin Tapered bushing system
- Shaft sizes up to 3-7/16"
- Torque Ratings up to 65,000 in-lb



Metric Torque Arm II ICA1602

- 12 case sizes
- Metric TAIL Reducers
- Metric Twin Taper Bushings
- Metric Modular accessories
- Shaft sizes up to 190mm
- Torque Ratings up to 50,000 N-M

TIGEAR-2



2009 Quantis Engineering Catalog CA1603

- In Line Helical (ILH)
- Right Angle Helical Bevel (RHB)
- Motorized Shaft Mount (MSM)
- Eight sizes (38 through 168)
- Four Input Configurations
- Torque Ratings up to 120k in-lbs
- High efficiency product

Engineering



2009 Custom Classics Catalog CA5001

- Master XL Right Angle
- Master XL Parallel
- Combination Tiger
- APG
- Reeves MotoDrive
- Ultima
- Junior & Senior Pulley