

Single and Three Phase, Foot Mounted

1/4 thru 300 Hp

NEMA 48 thru 449TY

Applications: Ideal for use where hazardous fumes or dust may be present.



Features: U.L. and CSA approved for Class I, Group D and Class I, Group C & D and Class II, Group F & G. Corrosion resistant epoxy finish. Shipped with U.L. and CSA approved cast conduit box assembled to each motor. 1.00 Service Factor. EM Super-E® explosion proof motors have NEMA Premium® efficiency and 3 year warranty.

| Hp                  | RPM  | NEMA Frame | Catalog Number | XP (a) Cls/Grp | List Price | Mult. Sym. | "C" Dim. | Aprx. Wt. (lb) | Full Load Efficiency | Voltage     | Full Load Amps | EISA Status (a) | Notes (a) |
|---------------------|------|------------|----------------|----------------|------------|------------|----------|----------------|----------------------|-------------|----------------|-----------------|-----------|
| <b>Single Phase</b> |      |            |                |                |            |            |          |                |                      |             |                |                 |           |
| 1/4                 | 1800 | 48         | L4003A         | ⑧              | 487        | K          | 12.85    | 27             | 55                   | 115/208-230 | 2.5            | C               |           |
|                     |      | 56         | L5000A         | ⑧              | 465        | K          | 13.22    | 27             | 62                   | 115/208-230 | 2.1            | C               |           |
|                     |      | 56         | L5000A-C       | ④              | 579        | K          | 13.22    | 32             | 62                   | 115/208-230 | 2.1            | C               |           |
| 1/3                 | 1800 | 48         | L4005A         | ⑧              | 432        | K          | 12.85    | 28             | 55                   | 115/230     | 3              | C               |           |
|                     |      | 48         | L4006A         | ⑧              | 628        | K          | 12.85    | 29             | 60                   | 115/208-230 | 3              | C               |           |
|                     |      | 56         | L5001A         | ⑧              | 598        | K          | 13.22    | 29             | 60                   | 115/208-230 | 3              | C               |           |
| 1/2                 | 1800 | 56         | L5002A         | ⑦              | 847        | K          | 14.30    | 41             | 54                   | 115/230     | 3.4            | C               |           |
|                     |      | 56         | L5003A         | ⑧              | 567        | K          | 13.22    | 30             | 57                   | 115/230     | 3.7            | C               |           |
|                     |      | 48         | L4009A         | ⑧              | 691        | K          | 13.85    | 36             | 64                   | 115/208-230 | 3.7            | C               |           |
| 3/4                 | 1800 | 56         | L5004A         | ⑧              | 659        | K          | 14.22    | 35             | 64                   | 115/208-230 | 3.7            | C               |           |
|                     |      | 56         | L5004A-C       | ④              | 773        | K          | 14.22    | 41             | 64                   | 115/208-230 | 3.7            | C               |           |
|                     |      | 56         | L5005A         | ⑦              | 976        | K          | 15.17    | 50             | 59                   | 115/230     | 4              | C               |           |
| 1                   | 1800 | 56         | L5006A         | ⑦              | 640        | K          | 14.30    | 40             | 62                   | 115/230     | 4.9            | C               |           |
|                     |      | 56         | L5007A         | ⑦              | 775        | K          | 15.17    | 48             | 66                   | 115/230     | 5.3            | C               |           |
|                     |      | 56         | L5007A-C       | ②              | 888        | K          | 15.17    | 52             | 66                   | 115/230     | 5.3            | C               |           |
| 1 1/2               | 1800 | 56         | L5022          | ①              | 1,128      | K          | 16.04    | 57             | 59.5                 | 115/230     | 5.7            | C               |           |
|                     |      | 56         | L5009A         | ⑦              | 691        | K          | 15.17    | 48             | 66                   | 115/230     | 6              | C               |           |
|                     |      | 56         | L5023A         | ①              | 882        | K          | 15.17    | 48             | 67                   | 115/230     | 6.5            | C               |           |
| 2                   | 1800 | 143T       | L5023T         | ①              | 864        | L1         | 15.23    | 48             | 67                   | 115/208-230 | 6.4            | C               |           |
|                     |      | 184        | L5026          | ⑧              | 1,933      | L1         | 16.92    | 82             | 67                   | 115/208-230 | 7              | C               |           |
|                     |      | 143T       | L5030T         | ⑧              | 1,001      | L1         | 15.23    | 53             | 70                   | 115/208-230 | 7.5            | C               |           |
| 3                   | 1800 | 184        | L5013          | ⑧              | 1,795      | L1         | 16.92    | 75             | 70                   | 115/230     | 9.5            | C               |           |
|                     |      | 3600       | L5031T         | ⑧              | 1,238      | L1         | 16.11    | 60             | 74                   | 115/208-230 | 11.5           | C               |           |
|                     |      | 1800       | L5027T         | ①              | 1,819      | L1         | 17.42    | 81             | 75                   | 115/230     | 11             | C               |           |
| 5                   | 1800 | 3600       | L5028T         | ①              | 1,890      | L1         | 17.42    | 81             | 76                   | 115/230     | 14.5           | C               |           |
|                     |      | 1800       | L5018          | ⑧              | 2,872      | L1         | 19.49    | 152            | 79                   | 115/230     | 15             | C               |           |
|                     |      | 215        | L5020          | ①              | 3,653      | L1         | 19.90    | 171            | 84                   | 230         | 21             | C               |           |
| <b>Three Phase</b>  |      |            |                |                |            |            |          |                |                      |             |                |                 |           |
| 1/4                 | 1800 | 48         | M6002A         | ⑧              | 507        | K          | 12.85    | 26             | 63                   | 208-230/460 | 0.7            | C               |           |
| 1/3                 | 1800 | 56         | M7002A         | ⑧              | 609        | K          | 13.22    | 28             | 67                   | 208-230/460 | 0.8            | C               |           |
|                     |      | 1200       | M7003A         | ⑦              | 874        | K          | 14.36    | 34             | 70                   | 208-230/460 | 0.8            | C               |           |
|                     |      | 3600       | M7005A         | ⑧              | 698        | K          | 13.22    | 27             | 68                   | 208-230/460 | 1.1            | C               |           |
| 1/2                 | 1800 | 48         | M6007A         | ⑧              | 634        | K          | 12.85    | 29             | 74                   | 208-230/460 | 1              | C               |           |
|                     |      | 56         | M7006A         | ⑧              | 634        | K          | 13.22    | 30             | 74                   | 208-230/460 | 1              | C               |           |
|                     |      | 1200       | M7007A         | ⑦              | 923        | K          | 14.36    | 39             | 70                   | 208-230/460 | 1.2            | C               |           |
| 3/4                 | 1800 | 56         | M7009A         | ⑧              | 727        | K          | 13.22    | 29             | 75                   | 208-230/460 | 1.3            | C               |           |
|                     |      | 56         | M7010A         | ⑧              | 730        | K          | 14.22    | 34             | 73                   | 208-230/460 | 1.5            | C               |           |
|                     |      | 1200       | M7031A         | ⑦              | 980        | K          | 15.23    | 44             | 77                   | 208-230/460 | 1.4            | C               |           |
|                     |      | 143T       | M7031TA        | ⑦              | 980        | L1         | 15.23    | 47             | 77                   | 208-230/460 | 1.4            | C               |           |

(a) See notes on inside back flap.

**CAUTION:** Explosion-proof motors have a tight fit between mating parts to ensure the integrity of the explosion-proof enclosure. This can lead to an accumulation of moisture inside the motors due to condensation. Care should be used when selecting an explosion-proof motor, especially when installed outdoors and on intermittent duty. Consider explosion-proof motors on pages 110-114 for outdoor applications. These explosion-proof motors are not suitable for use with adjustable speed drives, inverter duty explosion-proof motors must be used. See page 232.

General Information

Premium Efficient Super-E® Motors

Single Phase Motors

General Purpose Industrial Motors

Severe Duty Motors

Washdown Duty Motors

Explosion Proof Motors

Pump Motors

Light Industrial/Commercial Motors

HVAC Motors

**Single and Three Phase, Foot Mounted**

| Hp    | RPM  | NEMA Frame | Catalog Number | XP <sup>(a)</sup> CIs/Grp | List Price | Mult. Sym. | "C" Dim. | Aprx. Wt. (lb) | Full Load Efficiency | Voltage     | Full Load Amps | EISA Status <sup>(a)</sup> | Notes <sup>(a)</sup> |
|-------|------|------------|----------------|---------------------------|------------|------------|----------|----------------|----------------------|-------------|----------------|----------------------------|----------------------|
| 1     | 3600 | 56         | M7013          | Ⓢ                         | 766        | K          | 13.22    | 31             | 75.5                 | 208-230/460 | 1.8            | C                          |                      |
|       |      | 56         | M7014          | Ⓢ                         | 799        | K          | 14.30    | 38             | 75.5                 | 208-230/460 | 1.8            | C                          | 19                   |
|       | 1800 | 143T       | EM7014T        | Ⓢ                         | 1,116      | L1         | 15.23    | 49             | 85.5                 | 230/460     | 1.5            | A                          | 19                   |
|       |      | 143T       | EM7114T        | Ⓢ                         | 1,536      | L1         | 16.28    | 85             | 85.5                 | 208-230/460 | 1.5            | A                          | 19                   |
|       |      | 143T       | EM7114T-C      | Ⓢ                         | 1,273      | L1         | 16.28    | 85             | 85.5                 | 208-230/460 | 1.5            | A                          | 19                   |
|       |      | 143T       | M7014T         | Ⓢ                         | 833        | LS         | 14.36    | 44             | 82.5                 | 230/460     | 1.6            | D                          | 19                   |
|       |      | 143T       | M7114T         | Ⓢ                         | 1,181      | LS         | 16.28    | 78             | 82.5                 | 230/460     | 1.6            | D                          | 19                   |
|       |      | 182        | M7015          | Ⓢ                         | 1,152      | L1         | 15.23    | 44             | 82.5                 | 208-230/460 | 1.8            | B                          | 19                   |
|       | 1200 | 56         | M7032          | Ⓢ                         | 980        | K          | 15.17    | 44             | 75.5                 | 230/460     | 1.7            | C                          |                      |
|       |      | 145T       | EM7032T        | Ⓢ                         | 1,248      | L1         | 17.48    | 55             | 82.5                 | 230/460     | 1.7            | A                          |                      |
| 145T  |      | M7032T     | Ⓢ              | 960                       | L1         | 15.23      | 52       | 80             | 230/460              | 1.8         | D              |                            |                      |
| 1 1/2 | 3600 | 143T       | EM7018T        | Ⓢ                         | 1,021      | L1         | 14.36    | 47             | 84                   | 208-230/460 | 1.9            | A                          | 19                   |
|       |      | 143T       | M7018T         | Ⓢ                         | 786        | L1         | 14.36    | 45             | 82.5                 | 230/460     | 2.1            | D                          | 19                   |
|       | 1800 | 56         | M7034          | Ⓢ                         | 870        | K          | 14.30    | 43             | 78.5                 | 208-230/460 | 2.5            | C                          | 19                   |
|       |      | 145T       | EM7034T        | Ⓢ                         | 1,156      | L1         | 16.10    | 56             | 86.5                 | 230/460     | 2              | A                          | 19                   |
|       |      | 145T       | EM7134T        | Ⓢ                         | 1,556      | L1         | 16.28    | 92             | 86.5                 | 208-230/460 | 2.3            | A                          |                      |
|       |      | 145T       | EM7134T-C      | Ⓢ                         | 1,303      | L1         | 16.28    | 85             | 86.5                 | 230/460     | 2.1            | A                          |                      |
|       |      | 145T       | M7034T         | Ⓢ                         | 835        | LS         | 15.23    | 48             | 84                   | 230/460     | 2.4            | D                          | 19                   |
|       |      | 145T       | M7134T         | Ⓢ                         | 1,197      | LS         | 16.28    | 81             | 84                   | 208-230/460 | 2.3            | D                          |                      |
|       | 1200 | 184        | M7019          | Ⓢ                         | 1,460      | L1         | 15.23    | 49             | 84                   | 208-230/460 | 2.5            | B                          | 19                   |
|       |      | 182T       | EM7020T        | Ⓢ                         | 1,718      | L1         | 17.42    | 96             | 87.5                 | 230/460     | 2.6            | A                          | 19                   |
| 182T  |      | EM7120T    | Ⓢ              | 1,910                     | L1         | 18.24      | 136      | 87.5           | 230/460              | 2.8         | A              | 19                         |                      |
| 2     | 3600 | 145T       | EM7071T        | Ⓢ                         | 1,045      | L1         | 16.10    | 56             | 85.5                 | 230/460     | 2.5            | A                          | 19                   |
|       |      | 145T       | M7071T         | Ⓢ                         | 804        | L1         | 15.23    | 52             | 84                   | 230/460     | 2.6            | D                          | 19                   |
|       | 1800 | 56         | M7037          | Ⓢ                         | 973        | K          | 15.17    | 51             | 82.5                 | 208-230/460 | 3.1            | C                          |                      |
|       |      | 145T       | EM7037T        | Ⓢ                         | 1,261      | L1         | 16.10    | 61             | 86.5                 | 208-230/460 | 2.7            | A                          | 19                   |
|       |      | 145T       | EM7137T        | Ⓢ                         | 1,638      | L1         | 16.28    | 92             | 86.5                 | 208-230/460 | 2.7            | A                          | 19                   |
|       |      | 145T       | EM7137T-C      | Ⓢ                         | 1,339      | L1         | 16.28    | 91             | 86.5                 | 208-230/460 | 2.8            | A                          |                      |
|       |      | 145T       | M7037T         | Ⓢ                         | 942        | LS         | 15.23    | 51             | 84                   | 230/460     | 3.1            | D                          | 19                   |
|       |      | 145T       | M7137T         | Ⓢ                         | 1,260      | LS         | 16.28    | 82             | 84                   | 230/460     | 3.1            | D                          | 19                   |
|       | 1200 | 184        | M7023          | Ⓢ                         | 1,495      | L1         | 15.23    | 54             | 84                   | 208-230/460 | 3.1            | B                          | 19                   |
|       |      | 184T       | EM7041T        | Ⓢ                         | 1,770      | L1         | 18.92    | 109            | 88.5                 | 230/460     | 3.3            | A                          | 19                   |
| 184T  |      | M7041T     | Ⓢ              | 1,361                     | L1         | 18.92      | 92       | 86.5           | 230/460              | 3.3         | D              | 19                         |                      |
| 3     | 3600 | 145T       | EM7075T        | Ⓢ                         | 1,238      | L1         | 17.48    | 77             | 86.5                 | 230/460     | 3.7            | A                          |                      |
|       |      | 145T       | M7075T         | Ⓢ                         | 952        | L1         | 17.48    | 69             | 85.5                 | 230/460     | 3.7            | D                          |                      |
|       |      | 182T       | EM7026T        | Ⓢ                         | 1,308      | L1         | 16.05    | 70             | 86.5                 | 230/460     | 3.7            | A                          | 19                   |
|       |      | 182T       | EM7126T        | Ⓢ                         | 1,759      | L1         | 17.56    | 130            | 86.5                 | 230/460     | 3.5            | A                          | 19                   |
|       |      | 182T       | M7026T         | Ⓢ                         | 1,006      | L1         | 16.05    | 66             | 85.5                 | 230/460     | 3.7            | D                          | 19                   |
|       |      | 182T       | M7126T         | Ⓢ                         | 1,353      | L1         | 17.56    | 127            | 85.5                 | 230/460     | 3.7            | D                          | 19                   |
|       | 1800 | 184        | M7026          | Ⓢ                         | 1,278      | L1         | 15.55    | 64             | 85.5                 | 208-230/460 | 3.9            | B                          | 19                   |
|       |      | 182T       | EM7042T        | Ⓢ                         | 1,340      | L1         | 18.92    | 90             | 89.5                 | 230/460     | 4.2            | A                          | 19                   |
|       |      | 182T       | EM7142T        | Ⓢ                         | 1,636      | L1         | 17.56    | 139            | 89.5                 | 230/460     | 4              | A                          | 19                   |
|       |      | 182T       | EM7142T-C      | Ⓢ                         | 1,448      | L1         | 17.56    | 136            | 89.5                 | 230/460     | 4              | A                          | 19                   |
| 182T  |      | M7042T     | Ⓢ              | 1,030                     | LS         | 17.42      | 81       | 87.5           | 230/460              | 4.1         | D              | 19                         |                      |
| 182T  |      | M7142T     | Ⓢ              | 1,258                     | LS         | 17.56      | 132      | 87.5           | 230/460              | 4.8         | D              | 19                         |                      |
| 1200  | 213  | M7027      | Ⓢ              | 1,708                     | L1         | 16.44      | 110      | 87.5           | 230/460              | 4.5         | B              | 19                         |                      |
|       | 213T | EM7036T    | Ⓢ              | 1,929                     | L1         | 20.32      | 152      | 89.5           | 230/460              | 3.7         | A              | 19                         |                      |
|       |      | 213T       | M7036T         | Ⓢ                         | 1,484      | L1         | 19.57    | 144            | 87.5                 | 230/460     | 4.6            | D                          | 19                   |

<sup>(a)</sup> See notes on inside back flap.

■ Cast Iron Frame

**CAUTION:** Explosion-proof motors have a tight fit between mating parts to ensure the integrity of the explosion-proof enclosure. This can lead to an accumulation of moisture inside the motors due to condensation. Care should be used when selecting an explosion-proof motor, especially when installed outdoors and on intermittent duty. Consider explosion-proof motors on pages 110-114 for outdoor applications. These explosion-proof motors are not suitable for use with adjustable speed drives, inverter duty explosion-proof motors must be used. See page 232.

General Information

Premium Efficient Super-E® Motors

Single Phase Motors

General Purpose Industrial Motors

Severe Duty Motors

Washdown Duty Motors

Explosion Proof Motors

Pump Motors

Light Industrial/Commercial Motors

HVAC Motors

Single and Three Phase, Foot Mounted

| Hp    | RPM  | NEMA Frame | Catalog Number | XP <sup>(a)</sup> CIs/Grp | List Price | Mult. Sym. | "C" Dim. | Aprx. Wt. (lb) | Full Load Efficiency | Voltage     | Full Load Amps | EISA Status <sup>(a)</sup> | Notes <sup>(a)</sup> |
|-------|------|------------|----------------|---------------------------|------------|------------|----------|----------------|----------------------|-------------|----------------|----------------------------|----------------------|
| 5     | 3600 | 184T       | EM7072T        | Ⓢ                         | 1,538      | L1         | 18.12    | 100            | 88.5                 | 230/460     | 5.9            | A                          | 19                   |
|       |      | 184T       | EM7172T        | Ⓢ                         | 2,062      | L1         | 17.56    | 155            | 88.5                 | 230/460     | 5.7            | A                          | 19                   |
|       |      | 184T       | M7072T         | Ⓢ                         | 1,183      | L1         | 18.12    | 93             | 87.5                 | 230/460     | 5.6            | D                          | 19                   |
|       |      | 184T       | M7172T         | Ⓢ                         | 1,586      | L1         | 17.56    | 145            | 87.5                 | 230/460     | 5.6            | D                          | 19                   |
|       | 1800 | 184T       | EM7044T        | Ⓢ                         | 1,660      | L1         | 18.92    | 105            | 89.5                 | 230/460     | 6.5            | A                          | 19                   |
|       |      | 184T       | EM7144T        | Ⓢ                         | 2,051      | L1         | 17.56    | 152            | 89.5                 | 230/460     | 6.5            | A                          | 19                   |
|       |      | 184T       | EM7144T-C      | ②                         | 1,746      | L1         | 17.56    | 152            | 89.5                 | 230/460     | 6.5            | A                          | 19                   |
|       |      | 184T       | M7044T         | Ⓢ                         | 1,277      | LS         | 17.37    | 99             | 87.5                 | 230/460     | 6.7            | D                          | 19                   |
|       | 1200 | 184T       | M7144T         | Ⓢ                         | 1,490      | LS         | 17.56    | 139            | 87.5                 | 230/460     | 6.7            | D                          | 19                   |
|       |      | 215        | M7030          | Ⓢ                         | 2,211      | L1         | 18.06    | 128            | 87.5                 | 208-230/460 | 7              | B                          | 19                   |
| 215T  |      | EM7040T    | Ⓢ              | 2,529                     | L1         | 22.32      | 172      | 89.5           | 230/460              | 5.8         | A              | 19                         |                      |
| 215T  |      | M7040T     | Ⓢ              | 1,945                     | L1         | 20.32      | 161      | 87.5           | 230/460              | 7.5         | D              | 19                         |                      |
| 7 1/2 | 3600 | 184T       | EM7073T        | ①                         | 2,018      | L1         | 18.92    | 105            | 89.5                 | 230/460     | 8.4            | A                          | 30                   |
|       |      | 184T       | M7073T         | ①                         | 1,528      | L1         | 18.92    | 94             | 88.5                 | 230/460     | 8.3            | D                          |                      |
|       |      | 213T       | EM7045T        | Ⓢ                         | 2,122      | L1         | 19.57    | 172            | 89.5                 | 230/460     | 8.9            | A                          | 19                   |
|       |      | 213T       | EM7145T        | Ⓢ                         | 2,379      | L1         | 19.90    | 162            | 89.5                 | 230/460     | 8.6            | A                          | 19                   |
|       |      | 213T       | M7045T         | Ⓢ                         | 1,632      | L1         | 19.57    | 166            | 88.5                 | 230/460     | 8.9            | D                          | 19                   |
|       |      | 213T       | M7145T         | Ⓢ                         | 1,830      | L1         | 19.90    | 154            | 88.5                 | 230/460     | 8.9            | D                          | 19                   |
|       | 1800 | 213T       | EM7047T        | Ⓢ                         | 2,204      | L1         | 19.57    | 178            | 91.7                 | 230/460     | 10.1           | A                          | 19                   |
|       |      | 213T       | EM7147T        | Ⓢ                         | 2,430      | L1         | 19.90    | 192            | 91.7                 | 230/460     | 9.4            | A                          | 19                   |
|       |      | 213T       | EM7147T-C      | ②                         | 2,184      | L1         | 19.91    | 225            | 91.7                 | 230/460     | 9.5            | A                          | 19                   |
|       |      | 213T       | M7047T         | Ⓢ                         | 1,574      | LS         | 19.57    | 168            | 89.5                 | 230/460     | 10.1           | D                          | 19                   |
|       | 1200 | 213T       | M7147T         | Ⓢ                         | 1,800      | LS         | 19.90    | 175            | 89.5                 | 230/460     | 10.3           | D                          | 19                   |
|       |      | 254T       | EM7048T        | Ⓢ                         | 2,994      | L1         | 25.50    | 392            | 91                   | 230/460     | 10.7           | A                          | 19                   |
|       |      | 254T       | M7048T         | Ⓢ                         | 2,303      | L1         | 25.50    | 381            | 89.5                 | 230/460     | 11.1           | D                          | 19                   |
|       |      | 215T       | EM7074T        | ①                         | 2,392      | L1         | 20.82    | 175            | 90.2                 | 230/460     | 11.2           | A                          |                      |
| 10    | 3600 | 215T       | EM7174T        | Ⓢ                         | 2,496      | L1         | 19.31    | 188            | 90.2                 | 230/460     | 11.1           | A                          | 19                   |
|       |      | 215T       | M7074T         | ①                         | 1,841      | L1         | 20.07    | 162            | 89.5                 | 230/460     | 11.6           | D                          |                      |
|       |      | 215T       | M7174T         | Ⓢ                         | 1,920      | L1         | 19.90    | 208            | 89.5                 | 230/460     | 11.6           | D                          | 19                   |
|       |      | 215T       | EM7070T        | Ⓢ                         | 2,462      | L1         | 22.32    | 175            | 91.7                 | 230/460     | 12.5           | A                          |                      |
|       | 1800 | 215T       | EM7170T        | Ⓢ                         | 3,114      | LS         | 19.90    | 251            | 91.7                 | 230/460     | 12.5           | A                          | 19                   |
|       |      | 215T       | EM7170T-C      | ④                         | 3,035      | L1         | 19.91    | 252            | 91.7                 | 230/460     | 12.5           | A                          | 19                   |
|       |      | 215T       | M7070T         | Ⓢ                         | 1,652      | LS         | 21.07    | 164            | 89.5                 | 230/460     | 13.5           | D                          |                      |
|       |      | 215T       | M7170T         | Ⓢ                         | 2,124      | LS         | 19.90    | 186            | 89.5                 | 230/460     | 13             | D                          | 19                   |
|       | 1200 | 256T       | EM7065T        | Ⓢ                         | 3,600      | L1         | 25.50    | 370            | 91                   | 230/460     | 14.4           | A                          | 19                   |
|       |      | 256T       | M7065T         | Ⓢ                         | 2,769      | L1         | 25.50    | 357            | 89.5                 | 230/460     | 14.4           | D                          | 19                   |
| 15    | 3600 | 254T       | EM7053T        | Ⓢ                         | 2,822      | L1         | 25.50    | 305            | 91                   | 230/460     | 17.2           | A                          | 19                   |
|       |      | 254T       | M7053T         | Ⓢ                         | 2,171      | L1         | 25.50    | 292            | 90.2                 | 230/460     | 17             | D                          | 19                   |
|       | 1800 | 254T       | EM7054T        | Ⓢ                         | 3,307      | L1         | 25.50    | 370            | 92.4                 | 230/460     | 18             | A                          | 19                   |
|       |      | 254T       | EM7054T-C      | ②                         | 3,388      | L1         | 25.50    | 370            | 92.4                 | 230/460     | 18             | A                          | 19                   |
|       |      | 254T       | M7054T         | Ⓢ                         | 2,461      | LS         | 25.50    | 376            | 91                   | 230/460     | 18.2           | D                          | 19                   |
|       | 1200 | 284T       | EM7057T        | Ⓢ                         | 5,803      | L1         | 28.61    | 450            | 91.7                 | 230/460     | 21             | A                          | 19                   |
|       |      | 284T       | M7057T         | Ⓢ                         | 4,464      | L1         | 28.61    | 436            | 90.2                 | 230/460     | 21             | D                          | 19                   |
|       |      | 256T       | EM7059T        | Ⓢ                         | 3,619      | L1         | 25.50    | 395            | 91                   | 230/460     | 23             | A                          | 19                   |
| 20    | 3600 | 256T       | M7059T         | Ⓢ                         | 2,784      | L1         | 25.50    | 371            | 90.2                 | 230/460     | 23             | D                          | 19                   |
|       |      | 256T       | EM7056T        | Ⓢ                         | 4,285      | L1         | 25.50    | 393            | 93                   | 230/460     | 24             | A                          | 19                   |
|       | 1800 | 256T       | EM7056T-C      | ②                         | 4,375      | L1         | 25.50    | 393            | 93                   | 230/460     | 24             | A                          | 19                   |
|       |      | 256T       | M7056T         | Ⓢ                         | 3,191      | LS         | 25.50    | 381            | 91                   | 230/460     | 25             | D                          | 19                   |
|       |      | 286T       | EM7079T        | Ⓢ                         | 5,958      | L1         | 28.61    | 540            | 91.7                 | 230/460     | 26             | A                          | 19                   |
|       | 1200 | 286T       | M7079T         | Ⓢ                         | 4,583      | L1         | 28.61    | 522            | 90.2                 | 230/460     | 27             | D                          | 19                   |

<sup>a)</sup> See notes on inside back flap.

■ Cast Iron Frame

**CAUTION:** Explosion-proof motors have a tight fit between mating parts to ensure the integrity of the explosion-proof enclosure. This can lead to an accumulation of moisture inside the motors due to condensation. Care should be used when selecting an explosion-proof motor, especially when installed outdoors and on intermittent duty. Consider explosion-proof motors on pages 110-114 for outdoor applications. These explosion-proof motors are not suitable for use with adjustable speed drives, inverter duty explosion-proof motors must be used. See page 232.

General Information

Premium Efficient Super-E® Motors

Single Phase Motors

General Purpose Industrial Motors

Severe Duty Motors

Washdown Duty Motors

Explosion Proof Motors

Pump Motors

Light Industrial/Commercial Motors

HVAC Motors

Single and Three Phase, Foot Mounted

| Hp   | RPM       | NEMA Frame | Catalog Number | XP <sup>(a)</sup> Cts/Grp | List Price | Mult. Sym. | "C" Dim. | Aprx. Wt. (lb) | Full Load Efficiency | Voltage | Full Load Amps | EISA Status <sup>(a)</sup> | Notes <sup>(a)</sup> |
|------|-----------|------------|----------------|---------------------------|------------|------------|----------|----------------|----------------------|---------|----------------|----------------------------|----------------------|
| 25   | 3600      | 284TS      | EM7063T        | ⑧                         | 4,817      | L1         | 27.24    | 530            | 91.7                 | 230/460 | 28             | A                          | 19                   |
|      |           | 284TS      | M7063T         | ⑧                         | 3,705      | L1         | 27.24    | 517            | 91                   | 230/460 | 28.5           | D                          | 19                   |
|      | 1800      | 284T       | EM7058T        | ⑧                         | 5,199      | L1         | 28.61    | 542            | 93.6                 | 230/460 | 30.5           | A                          | 19                   |
|      |           | 284T       | EM7058T-C      | ②                         | 5,300      | L1         | 28.61    | 564            | 93.6                 | 230/460 | 30.5           | A                          | 19                   |
|      |           | 284T       | M7058T         | ⑧                         | 3,948      | LS         | 28.61    | 528            | 92.4                 | 230/460 | 30.8           | D                          | 19                   |
|      | 1200      | 324T       | EM7082T        | ⑧                         | 7,450      | L1         | 32.00    | 740            | 93                   | 230/460 | 32             | A                          | 19                   |
| 324T |           | M7082T     | ⑧              | 5,731                     | L1         | 32.00      | 721      | 91.7           | 230/460              | 31      | D              | 19                         |                      |
| 30   | 3600      | 286TS      | EM7083T        | ⑧                         | 5,662      | L1         | 27.24    | 560            | 91.7                 | 230/460 | 33             | A                          | 19                   |
|      |           | 286TS      | M7083T         | ⑧                         | 4,355      | L1         | 27.24    | 534            | 91                   | 230/460 | 34             | D                          | 19                   |
|      | 1800      | 286T       | EM7060T        | ⑧                         | 6,338      | L1         | 28.61    | 567            | 93.6                 | 230/460 | 36             | A                          | 19                   |
|      |           | 286T       | EM7060T-C      | ②                         | 6,443      | L1         | 28.61    | 589            | 93.6                 | 230/460 | 37             | A                          | 19                   |
|      |           | 286T       | M7060T         | ⑧                         | 4,719      | LS         | 28.61    | 491            | 92.4                 | 230/460 | 36             | D                          | 19                   |
|      | 1200      | 326T       | EM7080T        | ⑧                         | 8,219      | L1         | 32.00    | 750            | 93                   | 230/460 | 39             | A                          | 19                   |
| 326T |           | M7080T     | ⑧              | 6,322                     | L1         | 32.00      | 737      | 91.7           | 230/460              | 37      | D              | 19                         |                      |
| 40   | 3600      | 324TS      | EM7067T        | ⑧                         | 7,552      | L1         | 30.50    | 740            | 92.4                 | 230/460 | 45             | A                          | 19                   |
|      |           | 324TS      | M7067T         | ⑧                         | 5,809      | L1         | 30.50    | 718            | 91.7                 | 230/460 | 45             | D                          | 19                   |
|      | 1800      | 324T       | EM7062T        | ⑧                         | 8,494      | L1         | 32.00    | 767            | 94.1                 | 230/460 | 48             | A                          | 19                   |
|      |           | 324T       | EM7062T-C      | ②                         | 8,609      | L1         | 32.12    | 834            | 94.1                 | 230/460 | 48             | A                          | 19                   |
|      |           | 324T       | M7062T         | ⑧                         | 6,447      | LS         | 32.00    | 750            | 93                   | 230/460 | 47             | D                          | 19                   |
|      | 1200      | 364T       | EM7084T        | ⑧                         | 9,526      | L1         | 33.44    | 910            | 94.1                 | 230/460 | 49.4           | A                          | 19                   |
| 364T |           | M7084T     | ⑧              | 7,328                     | L1         | 33.25      | 915      | 93             | 230/460              | 49      | D              | 19                         |                      |
| 50   | 3600      | 326TS      | EM7081T        | ⑧                         | 9,670      | L1         | 30.50    | 724            | 93                   | 230/460 | 56             | A                          | 19                   |
|      |           | 326TS      | M7081T         | ⑧                         | 7,439      | L1         | 30.50    | 704            | 92.4                 | 230/460 | 56             | D                          | 19                   |
|      | 1800      | 326T       | EM7064T        | ⑧                         | 11,326     | LS         | 32.00    | 783            | 94.5                 | 230/460 | 57             | A                          | 19                   |
|      |           | 326T       | EM7064T-C      | ②                         | 9,996      | L1         | 32.12    | 851            | 94.5                 | 230/460 | 57             | A                          | 19                   |
|      |           | 326T       | M7064T         | ⑧                         | 7,501      | LS         | 32.00    | 769            | 93                   | 230/460 | 60             | D                          | 19                   |
|      | 1200      | 365T       | EM7085T        | ⑦                         | 10,751     | L1         | 33.44    | 950            | 94.1                 | 230/460 | 61.7           | A                          | 19                   |
| 365T |           | M7085T     | ⑦              | 8,270                     | L1         | 33.25      | 918      | 93             | 230/460              | 61      | D              | 19                         |                      |
| 60   | 1800      | 364T       | EM7066T        | ⑦                         | 12,670     | LS         | 33.25    | 965            | 95                   | 230/460 | 69             | A                          | 19                   |
|      |           | 364T       | EM7066T-C      | ②                         | 11,174     | L1         | 33.25    | 989            | 95                   | 230/460 | 69             | A                          | 19                   |
|      |           | 364T       | M7066T         | ⑦                         | 8,390      | LS         | 33.25    | 969            | 93.6                 | 230/460 | 69             | D                          | 19                   |
|      | 1200      | 404T       | EM7086T        | ⑦                         | 12,828     | L1         | 38.31    | 1300           | 94.5                 | 230/460 | 69             | A                          | 19                   |
|      |           | 404T       | M7086T         | ⑦                         | 9,868      | L1         | 38.75    | 1233           | 93.6                 | 230/460 | 70             | D                          | 19                   |
|      |           | 365T       | EM7068T        | ②                         | 13,345     | L1         | 33.44    | 1065           | 95.4                 | 230/460 | 86             | A                          | 19, 35               |
| 75   | 1800      | 365T       | M7068T         | ②                         | 10,465     | LS         | 33.25    | 1031           | 94.1                 | 230/460 | 85             | D                          | 19                   |
|      |           | 405T       | EM7087T        | ⑦                         | 14,352     | L1         | 38.31    | 1335           | 94.5                 | 230/460 | 86.9           | A                          | 19                   |
|      | 1200      | 405T       | M7087T         | ⑦                         | 11,224     | L1         | 38.75    | 1338           | 93.6                 | 230/460 | 88             | D                          | 19                   |
|      |           | 405T       | EM7090T        | ②                         | 15,498     | L1         | 38.31    | 1335           | 95.4                 | 230/460 | 112            | A                          | 19                   |
| 100  | 1800      | 405T       | M7090T         | ②                         | 12,398     | LS         | 38.75    | 1363           | 94.5                 | 230/460 | 113            | D                          | 19                   |
|      |           | 125        | 1800           | 444T                      | EM74124T-4 | ②          | 18,111   | L1             | 44.62                | 1908    | 95.4           | 460                        | 139                  |
| 444T | M74124T-4 |            |                | ②                         | 16,567     | LS         | 44.25    | 1327           | 94.5                 | 460     | 143            | D                          | 19                   |
| 150  | 1800      | 445T       | EM74154T-4     | ②                         | 20,240     | L1         | 44.62    | 2048           | 95.8                 | 460     | 165            | A                          | 19                   |
|      |           | 445T       | M74154T-4      | ②                         | 18,347     | LS         | 44.25    | 1450           | 95                   | 460     | 167            | D                          | 19                   |
|      |           | 447T       | EM74204T-4     | ②                         | 28,930     | L1         | 48.40    | 2417           | 96.2                 | 460     | 221            | A                          | 19                   |
| 200  | 1800      | 447T       | M74204T-4      | ②                         | 27,037     | LS         | 52.75    | 1975           | 95                   | 460     | 224            | D                          | 19, 20               |
|      |           | 250        | 1800           | 447T                      | M74254T-4  | ②          | 31,526   | L1             | 52.75                | 2016    | 95             | 460                        | 284                  |
| 300  | 1800      |            |                | 449TY                     | M74304T-4  | ②          | 46,928   | L1             | 54.25                | 2959    | 95             | 460                        | 328                  |

(a) See notes on inside back flap.

■ Cast Iron Frame

**CAUTION:** Explosion-proof motors have a tight fit between mating parts to ensure the integrity of the explosion-proof enclosure. This can lead to an accumulation of moisture inside the motors due to condensation. Care should be used when selecting an explosion-proof motor, especially when installed outdoors and on intermittent duty. Consider explosion-proof motors on pages 110-114 for outdoor applications. These explosion-proof motors are not suitable for use with adjustable speed drives, inverter duty explosion-proof motors must be used. See page 232.

General Information

Premium Efficient Super-E® Motors

Single Phase Motors

General Purpose Industrial Motors

Severe Duty Motors

Washdown Duty Motors

Explosion Proof Motors

Pump Motors

Light Industrial/Commercial Motors

HVAC Motors

Single and Three Phase, C-Face

1/3 thru 50 Hp

NEMA 56C thru 326TC

**Applications:** Ideal for use on pumps, blowers and valves installed where hazardous fumes or dust may be present.

**Features:** Corrosion resistant epoxy finish. Positively locked drive end bearing. U.L. approved cast conduit box-standard. 1.00 S.F. U.L. and CSA approved for Class 1, Group D, Class 2, Group F & G Efficiency and 3 year warranty. No drip cover.



| Hp  | RPM  | NEMA Frame | Catalog Number | XP <sup>(a)</sup> Cls/Grp | List Price | Mult. Sym. | "C" Dim. | Aprx. Wt. (lb) | Full Load Efficiency | Voltage     | Full Load Amps | EISA Status <sup>(a)</sup> | Notes <sup>(a)</sup> |
|---|------|------------|----------------|---------------------------|------------|------------|----------|----------------|----------------------|-------------|----------------|----------------------------|----------------------|
| <b>Single Phase, C-Face, Foot Mounted</b> |      |            |                |                           |            |            |          |                |                      |             |                |                            |                      |
| 1/3                                       | 1800 | 56C        | CL5001A        | Ⓢ                         | 729        | K          | 13.22    | 30             | 60                   | 115/208-230 | 3              | C                          |                      |
| 1/2                                       | 3600 | 56C        | CL5003A        | Ⓢ                         | 640        | K          | 13.22    | 31             | 57                   | 115/230     | 3.7            | C                          |                      |
|   | 1800 | 56C        | CL5004A        | Ⓢ                         | 730        | K          | 14.22    | 37             | 64                   | 115/208-230 | 3.7            | C                          |                      |
| 3/4                                       | 1800 | 56C        | CL5007A        | ⑦                         | 814        | K          | 15.17    | 48             | 66                   | 115/230     | 5.3            | C                          |                      |
| 1   | 3600 | 56C        | CL5009A        | ⑦                         | 726        | K          | 15.17    | 49             | 66                   | 115/230     | 6              | C                          |                      |
|   | 1800 | 56C        | CL5023A        | ①                         | 925        | K          | 15.17    | 48             | 67                   | 115/230     | 6.5            | C                          |                      |
| 1 1/2                                     | 3600 | 143TC      | CL5030T        | Ⓢ                         | 1,138      | L1         | 15.23    | 54             | 70                   | 115/208-230 | 7.5            | C                          |                      |
|   | 1800 | 184C       | CL5013         | Ⓢ                         | 1,847      | L1         | 16.93    | 81             | 70                   | 115/230     | 9.5            | C                          |                      |
| 2   | 3600 | 143TC      | CL5031T        | Ⓢ                         | 1,301      | L1         | 16.10    | 61             | 74                   | 115/208-230 | 11.5           | C                          |                      |
|   | 1800 | 182TC      | CL5027T        | ①                         | 1,906      | L1         | 18.86    | 96             | 75                   | 115/230     | 11             | C                          |                      |
| 3   | 3600 | 184TC      | CL5028T        | ①                         | 1,928      | L1         | 18.86    | 96             | 76                   | 115/230     | 14.5           | C                          |                      |
|   | 1800 | 215C       | CL5018         | Ⓢ                         | 2,958      | L1         | 19.56    | 154            | 79                   | 115/230     | 15             | C                          |                      |
| 5   | 1800 | 215C       | CL5020         | ①                         | 3,766      | L1         | 20.69    | 170            | 84                   | 230         | 21             | C                          |                      |
| <b>Single Phase, C-Face, Footless</b>     |      |            |                |                           |            |            |          |                |                      |             |                |                            |                      |
| 1/4                                       | 1800 | 56C        | VL5000A        | Ⓢ                         | 645        | K          | 13.22    | 30             | 62                   | 115/208-230 | 2.1            | C                          |                      |
| 1/3                                       | 3600 | 56C        | VL4005A        | Ⓢ                         | 491        | K          | 13.22    | 30             | 57                   | 115/230     | 3.5            | C                          |                      |
|   | 1800 | 56C        | VL5001A        | Ⓢ                         | 659        | K          | 13.22    | 29             | 60                   | 115/208-230 | 3              | C                          |                      |
|   | 1200 | 56C        | VL5002A        | ⑦                         | 883        | K          | 14.30    | 42             | 54                   | 115/230     | 3.4            | C                          |                      |
| 1/2                                       | 3600 | 56C        | VL5003A        | Ⓢ                         | 635        | K          | 13.22    | 30             | 57                   | 115/230     | 3.7            | C                          |                      |
|   | 1800 | 56C        | VL5004A        | Ⓢ                         | 728        | K          | 14.22    | 36             | 64                   | 115/208-230 | 3.7            | C                          |                      |
|   | 1200 | 56C        | VL5005A        | ⑦                         | 1,013      | K          | 15.17    | 50             | 59                   | 115/230     | 4              | C                          |                      |
| 3/4                                       | 3600 | 56C        | VL5006A        | ⑦                         | 679        | K          | 14.30    | 40             | 62                   | 115/230     | 4.9            | C                          |                      |
|   | 1800 | 56C        | VL5007A        | ⑦                         | 811        | K          | 15.17    | 47             | 66                   | 115/230     | 5.3            | C                          |                      |
| 1   | 3600 | 56C        | VL5009A        | ⑦                         | 728        | K          | 15.17    | 49             | 66                   | 115/230     | 6              | C                          |                      |
|   | 1800 | 56C        | VL5023A        | ①                         | 921        | K          | 15.17    | 51             | 67                   | 115/230     | 6.5            | C                          |                      |
| 1 1/2                                     | 3600 | 56C        | VL5030         | ①                         | 1,048      | K          | 15.17    | 54             | 70                   | 115/208-230 | 7.5            | C                          |                      |
|   | 1800 | 56C        | VL5024A        | ①                         | 1,216      | K          | 17.42    | 75             | 75                   | 115/230     | 8              | C                          |                      |
| 2   | 1800 | 184C       | VL5027         | ①                         | 1,934      | L1         | 16.93    | 91             | 75                   | 115/208-230 | 11             | C                          |                      |
| <b>Three Phase, C-Face, Foot Mounted</b>  |      |            |                |                           |            |            |          |                |                      |             |                |                            |                      |
| 1/2                                       | 3600 | 56C        | CM7005A        | Ⓢ                         | 764        | K          | 13.22    | 28             | 68                   | 208-230/460 | 1.1            | C                          |                      |
|   | 1800 | 56C        | CM7006A        | Ⓢ                         | 827        | K          | 13.22    | 30             | 74                   | 208-230/460 | 1              | C                          |                      |
| 3/4                                       | 3600 | 56C        | CM7009A        | Ⓢ                         | 789        | K          | 13.22    | 30             | 75                   | 208-230/460 | 1.3            | C                          |                      |
|   | 1800 | 56C        | CM7010A        | Ⓢ                         | 843        | K          | 14.22    | 35             | 73                   | 208-230/460 | 1.5            | C                          |                      |
| 1   | 3600 | 56C        | CM7013         | Ⓢ                         | 825        | K          | 13.22    | 31             | 75.5                 | 208-230/460 | 1.8            | C                          |                      |
|   |      | 56C        | CM7014         | Ⓢ                         | 899        | K          | 14.30    | 41             | 75.5                 | 208-230/460 | 1.8            | C                          | 19                   |
|   | 1800 | 143TC      | CEM7014T       | Ⓢ                         | 1,183      | L1         | 15.23    | 52             | 85.5                 | 230/460     | 0              | A                          | 19                   |
|   |      | 143TC      | CM7014T        | Ⓢ                         | 899        | L1         | 14.36    | 44             | 82.5                 | 230/460     | 1.6            | D                          | 19                   |

<sup>(a)</sup> See notes on inside back flap.

**CAUTION:** Explosion-proof motors have a tight fit between mating parts to ensure the integrity of the explosion-proof enclosure. This can lead to an accumulation of moisture inside the motors due to condensation. Care should be used when selecting an explosion-proof motor, especially when installed outdoors and on intermittent duty. Consider explosion-proof motors on pages 110-114 for outdoor applications. These explosion-proof motors are not suitable for use with adjustable speed drives, inverter duty explosion-proof motors must be used. See page 232.

General Information

Premium Efficient Super-E® Motors

Single Phase Motors

General Purpose Industrial Motors

Severe Duty Motors

Washdown Duty Motors

Explosion Proof Motors

Pump Motors

Light Industrial/Commercial Motors

HVAC Motors

105

Single and Three Phase, C-Face

| Hp    | RPM  | NEMA Frame | Catalog Number | XP <sup>(a)</sup> Cts/Grp | List Price | Mult. Sym. | "C" Dim. | Aprx. Wt. (lb) | Full Load Efficiency | Voltage     | Full Load Amps | EISA Status <sup>(a)</sup> | Notes <sup>(a)</sup> |
|-------|------|------------|----------------|---------------------------|------------|------------|----------|----------------|----------------------|-------------|----------------|----------------------------|----------------------|
| 1 1/2 | 3600 | 143TC      | CEM7018T       | Ⓢ                         | 1,171      | L1         | 15.23    | 48             | 84                   | 230/460     | 1.9            | A                          | 19                   |
|       |      | 143TC      | CM7018T        | Ⓢ                         | 935        | L1         | 14.36    | 47             | 82.5                 | 230/460     | 2.1            | D                          | 19                   |
|       | 1800 | 56C        | CM7034         | Ⓢ                         | 958        | K          | 14.30    | 44             | 78.5                 | 208-230/460 | 2.5            | C                          | 19                   |
|       |      | 145TC      | CEM7034T       | Ⓢ                         | 1,281      | L1         | 16.10    | 59             | 86.5                 | 230/460     | 0              | A                          | 19                   |
|       |      | 145TC      | CM7034T        | Ⓢ                         | 958        | L1         | 15.23    | 49             | 84                   | 230/460     | 2.4            | D                          | 19                   |
| 2     | 3600 | 145TC      | CEM7071T       | Ⓢ                         | 1,168      | L1         | 16.10    | 92             | 85.5                 | 230/460     | 2.5            | A                          | 19                   |
|       |      | 145TC      | CM7071T        | Ⓢ                         | 1,032      | L1         | 15.23    | 52             | 84                   | 230/460     | 2.6            | D                          | 19                   |
|       | 1800 | 56C        | CM7037         | Ⓢ                         | 1,037      | K          | 15.17    | 52             | 82.5                 | 208-230/460 | 3.1            | C                          | 19                   |
|       |      | 145TC      | CEM7037T       | Ⓢ                         | 1,357      | L1         | 16.10    | 65             | 86.5                 | 208-230/460 | 2.7            | A                          | 19                   |
|       |      | 145TC      | CM7037T        | Ⓢ                         | 1,037      | L1         | 15.23    | 53             | 84                   | 230/460     | 3.1            | D                          | 19                   |
| 3     | 3600 | 145TC      | CEM7075T       | ①                         | 1,448      | L1         | 17.49    | 75             | 86.5                 | 230/460     | 3.7            | A                          | 19                   |
|       |      | 145TC      | CM7075T        | ①                         | 1,162      | L1         | 17.48    | 69             | 85.5                 | 230/460     | 3.7            | D                          | 19                   |
|       | 1800 | 182TC      | CEM7042T       | Ⓢ                         | 1,645      | L1         | 20.36    | 85             | 89.5                 | 230/460     | 4.2            | A                          | 19                   |
|       |      | 182TC      | CM7042T        | Ⓢ                         | 1,336      | L1         | 18.86    | 92             | 87.5                 | 230/460     | 4.1            | D                          | 19                   |
|       |      | 184TC      | CEM7072T       | Ⓢ                         | 1,910      | L1         | 18.86    | 97             | 88.5                 | 230/460     | 5.9            | A                          | 19                   |
| 5     | 3600 | 184TC      | CM7072T        | Ⓢ                         | 1,555      | L1         | 18.86    | 101            | 87.5                 | 230/460     | 5.6            | D                          | 19                   |
|       |      | 184TC      | CEM7044T       | Ⓢ                         | 1,989      | L1         | 18.80    | 96             | 89.5                 | 230/460     | 6.5            | A                          | 19                   |
|       | 1800 | 184TC      | CM7044T        | Ⓢ                         | 1,607      | L1         | 18.80    | 111            | 87.5                 | 230/460     | 6.7            | D                          | 19                   |
|       |      | 184TC      | CEM7073T       | ①                         | 2,243      | L1         | 20.36    | 120            | 89.5                 | 230/460     | 8.4            | A                          | 30                   |
|       |      | 184TC      | CM7073T        | ①                         | 1,753      | L1         | 20.36    | 111            | 88.5                 | 230/460     | 8.3            | D                          | 19                   |
| 7 1/2 | 3600 | 213TC      | CEM7045T       | Ⓢ                         | 2,545      | L1         | 20.33    | 170            | 89.5                 | 230/460     | 8.9            | A                          | 19                   |
|       |      | 213TC      | CM7045T        | Ⓢ                         | 2,055      | L1         | 20.33    | 173            | 88.5                 | 230/460     | 8.9            | D                          | 19                   |
|       |      | 213TC      | CEM7047T       | Ⓢ                         | 2,333      | L1         | 20.36    | 175            | 91.7                 | 230/460     | 9.4            | A                          | 19                   |
|       | 1800 | 213TC      | CM7047T        | Ⓢ                         | 2,088      | L1         | 21.08    | 183            | 89.5                 | 230/460     | 10.1           | D                          | 19                   |
|       |      | 215TC      | CEM7174T       | Ⓢ                         | 2,778      | L1         | 20.65    | 235            | 90.2                 | 230/460     | 11.2           | A                          | 19                   |
| 10    | 3600 | 215TC      | CM7174T        | Ⓢ                         | 2,202      | L1         | 20.65    | 215            | 89.5                 | 230/460     | 11.6           | D                          | 19                   |
|       |      | 215TC      | CEM7170T       | Ⓢ                         | 2,838      | L1         | 20.65    | 252            | 91.7                 | 230/460     | 12.2           | A                          | 19                   |
|       | 1800 | 215TC      | CM7170T        | Ⓢ                         | 2,202      | L1         | 20.65    | 232            | 89.5                 | 230/460     | 13             | D                          | 19                   |
|       |      | 254TC      | CEM7053T       | Ⓢ                         | 4,014      | L1         | 26.00    | 305            | 91                   | 230/460     | 17.2           | A                          | 19                   |
|       |      | 254TC      | CM7053T        | Ⓢ                         | 2,363      | L1         | 26.00    | 345            | 90.2                 | 230/460     | 17             | D                          | 19                   |
| 15    | 3600 | 254TC      | CEM7054T       | Ⓢ                         | 4,694      | L1         | 26.00    | 380            | 92.4                 | 230/460     | 18             | A                          | 19                   |
|       |      | 254TC      | CM7054T        | Ⓢ                         | 3,843      | L1         | 26.00    | 386            | 91                   | 230/460     | 18.2           | D                          | 19                   |
|       | 1800 | 256TC      | CEM7059T       | Ⓢ                         | 4,812      | L1         | 26.00    | 406            | 91                   | 230/460     | 23             | A                          | 19                   |
|       |      | 256TC      | CM7059T        | Ⓢ                         | 2,978      | L1         | 26.00    | 372            | 90.2                 | 230/460     | 23             | D                          | 19                   |
|       |      | 256TC      | CEM7056T       | Ⓢ                         | 5,564      | L1         | 26.00    | 405            | 93                   | 230/460     | 24             | A                          | 19                   |
| 20    | 3600 | 256TC      | CM7056T        | Ⓢ                         | 4,464      | L1         | 26.00    | 362            | 91                   | 230/460     | 25             | D                          | 19                   |
|       |      | 284TSC     | CEM7063T       | Ⓢ                         | 5,000      | L1         | 27.24    | 535            | 91.7                 | 230/460     | 28             | A                          | 19                   |
|       | 1800 | 284TSC     | CM7063T        | Ⓢ                         | 3,888      | L1         | 27.24    | 524            | 91                   | 230/460     | 28.5           | D                          | 19                   |
|       |      | 284TC      | CEM7058T       | Ⓢ                         | 6,813      | L1         | 28.61    | 555            | 93.6                 | 230/460     | 30.5           | A                          | 19                   |
|       |      | 284TC      | CM7058T        | Ⓢ                         | 5,555      | L1         | 28.61    | 532            | 92.4                 | 230/460     | 30.8           | D                          | 19                   |
| 30    | 1800 | 286TC      | CEM7060T       | Ⓢ                         | 7,907      | L1         | 28.61    | 574            | 93.6                 | 230/460     | 36             | A                          | 19                   |
|       |      | 286TC      | CM7060T        | Ⓢ                         | 6,279      | L1         | 28.61    | 533            | 92.4                 | 230/460     | 36             | D                          | 19                   |
| 40    | 1800 | 324TC      | CEM7062T       | Ⓢ                         | 10,547     | L1         | 32.00    | 775            | 94.1                 | 230/460     | 48             | A                          | 19                   |
|       |      | 324TC      | CM7062T        | Ⓢ                         | 8,488      | L1         | 32.00    | 735            | 93                   | 230/460     | 47             | D                          | 19                   |
| 50    | 1800 | 326TC      | CEM7064T       | Ⓢ                         | 11,993     | L1         | 32.00    | 795            | 94.5                 | 230/460     | 57             | A                          | 19                   |
|       |      | 326TC      | CM7064T        | Ⓢ                         | 9,600      | L1         | 32.00    | 763            | 93                   | 230/460     | 60             | D                          | 19                   |

Three Phase, C-Face, Footless

|     |      |     |         |   |       |   |       |    |    |             |     |   |  |
|-----|------|-----|---------|---|-------|---|-------|----|----|-------------|-----|---|--|
| 1/4 | 1800 | 56C | VM7001A | Ⓢ | 768   | K | 13.22 | 26 | 63 | 208-230/460 | 0.7 | C |  |
| 1/3 | 1800 | 56C | VM7002A | Ⓢ | 784   | K | 13.22 | 28 | 67 | 208-230/460 | 0.8 | C |  |
| 1/2 | 3600 | 56C | VM7005A | Ⓢ | 759   | K | 13.22 | 26 | 68 | 208-230/460 | 1.1 | C |  |
|     | 1800 | 56C | VM7006A | Ⓢ | 825   | K | 13.22 | 30 | 74 | 208-230/460 | 1   | C |  |
|     | 1200 | 56C | VM7007A | ⑦ | 960   | K | 14.30 | 38 | 70 | 208-230/460 | 1.2 | C |  |
| 3/4 | 3600 | 56C | VM7009A | Ⓢ | 784   | K | 13.22 | 29 | 75 | 208-230/460 | 1.3 | C |  |
|     | 1800 | 56C | VM7010A | Ⓢ | 840   | K | 14.22 | 33 | 73 | 208-230/460 | 1.5 | C |  |
|     | 1200 | 56C | VM7031A | ⑦ | 1,008 | K | 15.17 | 44 | 77 | 208-230/460 | 1.4 | C |  |

<sup>(a)</sup> See notes on inside back flap.

■ Cast Iron Frame

**CAUTION:** Explosion-proof motors have a tight fit between mating parts to ensure the integrity of the explosion-proof enclosure. This can lead to an accumulation of moisture inside the motors due to condensation. Care should be used when selecting an explosion-proof motor, especially when installed outdoors and on intermittent duty. Consider explosion-proof motors on pages 110-114 for outdoor applications. These explosion-proof motors are not suitable for use with adjustable speed drives, inverter duty explosion-proof motors must be used. See page 232.

Single and Three Phase, C-Face

| Hp    | RPM   | NEMA Frame | Catalog Number | XP <sup>(a)</sup> Cls/Grp | List Price | Mult. Sym. | "C" Dim. | Aprx. Wt. (lb) | Full Load Efficiency | Voltage     | Full Load Amps | EISA Status <sup>(a)</sup> | Notes <sup>(a)</sup> |
|-------|-------|------------|----------------|---------------------------|------------|------------|----------|----------------|----------------------|-------------|----------------|----------------------------|----------------------|
| 1     | 3600  | 56C        | VM7013         | Ⓢ                         | 817        | K          | 13.22    | 31             | 75.5                 | 208-230/460 | 1.8            | C                          |                      |
|       | 1800  | 56C        | VM7014         | Ⓢ                         | 882        | K          | 15.22    | 41             | 75.5                 | 208-230/460 | 1.8            | C                          |                      |
|       |       | 143TC      | VM7014T        | Ⓢ                         | 952        | L1         | 14.36    | 40             | 82.5                 | 208-230/460 | 1.8            | B                          | 19                   |
| 1 1/2 | 1200  | 56C        | VM7032         | ①                         | 1,062      | K          | 15.15    | 46             | 75.5                 | 230/460     | 1.9            | C                          |                      |
|       | 3600  | 143TC      | VM7018T        | Ⓢ                         | 1,003      | L1         | 14.36    | 41             | 75.5                 | 208-230/460 | 2.3            | B                          | 19                   |
|       |       | 56C        | VM7034         | Ⓢ                         | 950        | K          | 14.20    | 43             | 78.5                 | 208-230/460 | 2.5            | C                          | 19                   |
|       |       | 145TC      | VM7034T        | Ⓢ                         | 1,026      | L1         | 14.36    | 43             | 78.5                 | 208-230/460 | 2.5            | B                          | 19                   |
|       | 1800  | 145TC      | VM7035T        | ①                         | 1,173      | L1         | 16.10    | 58             | 80                   | 208-230/460 | 2.6            | B                          |                      |
|       |       | 3600       | 145TC          | VM7071T                   | Ⓢ          | 1,122      | L1       | 15.23          | 47                   | 78.5        | 208-230/460    | 2.7                        | B                    |
| 1800  |       | 56C        | VM7037         | Ⓢ                         | 1,027      | K          | 15.17    | 51             | 82.5                 | 208-230/460 | 3.1            | C                          | 19                   |
|       | 145TC | VM7037T    | Ⓢ              | 1,110                     | L1         | 15.23      | 50       | 82.5           | 208-230/460          | 3.1         | B              | 19                         |                      |
| 3     | 3600  | 145TC      | VM7075T        | ①                         | 1,245      | L1         | 15.23    | 54             | 82.5                 | 208-230/460 | 3.8            | B                          |                      |
|       |       | 182TC      | VM7026T        | Ⓢ                         | 1,313      | L1         | 17.49    | 74             | 81.5                 | 208-230/460 | 3.9            | B                          | 19                   |
|       | 1800  | 182TC      | VM7042T        | Ⓢ                         | 1,423      | L1         | 17.49    | 81             | 82.5                 | 230/460     | 4.3            | B                          | 19                   |
| 5     | 3600  | 184TC      | VM7072T        | Ⓢ                         | 1,660      | L1         | 18.06    | 97             | 85.5                 | 208-230/460 | 6              | B                          | 19                   |
|       | 1800  | 184TC      | VM7044T        | Ⓢ                         | 1,733      | L1         | 18.80    | 111            | 86.5                 | 230/460     | 6.5            | B                          | 19                   |
| 7 1/2 | 3600  | 184TC      | VM7073T        | ①                         | 1,874      | L1         | 20.36    | 110            | 87.5                 | 230/460     | 8.8            | B                          | 19                   |
|       |       | 213TC      | VM7045T        | Ⓢ                         | 2,182      | L1         | 19.19    | 144            | 84                   | 230/460     | 9.3            | B                          | 19                   |
|       | 1800  | 213TC      | VM7047T        | Ⓢ                         | 2,006      | L1         | 19.19    | 156            | 89.5                 | 230/460     | 10.1           | B                          | 19                   |
| 10    | 1800  | 215TC      | VM7170T        | Ⓢ                         | 2,433      | L1         | 20.65    | 220            | 88.5                 | 230/460     | 13.8           | B                          | 19                   |

<sup>(a)</sup> See notes on inside back flap.

**CAUTION:** Explosion-proof motors have a tight fit between mating parts to ensure the integrity of the explosion-proof enclosure. This can lead to an accumulation of moisture inside the motors due to condensation. Care should be used when selecting an explosion-proof motor, especially when installed outdoors and on intermittent duty. Consider explosion-proof motors on pages 110-114 for outdoor applications. These explosion-proof motors are not suitable for use with adjustable speed drives, inverter duty explosion-proof motors must be used. See page 232.

General Information

Premium Efficient Super-E® Motors

Single Phase Motors

General Purpose Industrial Motors

Severe Duty Motors

Washdown Duty Motors

Explosion Proof Motors

Pump Motors

Light Industrial/Commercial Motors

HVAC Motors

**575 Volt,  
Three Phase,  
Explosion Proof**

**1/2 thru 40 Hp**

**NEMA 56 thru 324T**

**Applications:** Shakers, blowers, pumps, mixers, etc.



**Features:** All models have torques exceeding NEMA standards, copper windings, rotors that are corrosion treated and precision balanced. 1.00 Service Factor. UL and CSA approved for Class I, Group D, Class II, Group, F & G, T3C.

| Hp                                 | RPM  | NEMA Frame | Catalog Number | XP <sup>(a)</sup> Cls/Grp | List Price | Mult. Sym. | "C" Dim. | Aprx. Wt. (lb) | Full Load Efficiency | Voltage | Full Load Amps | EISA Status <sup>(a)</sup> | Notes <sup>(a)</sup> |
|------------------------------------|------|------------|----------------|---------------------------|------------|------------|----------|----------------|----------------------|---------|----------------|----------------------------|----------------------|
| <b>Foot Mounted, No Drip Cover</b> |      |            |                |                           |            |            |          |                |                      |         |                |                            |                      |
| 1/2                                | 1800 | 56         | M7006-5        | Ⓢ                         | 634        | K          | 14.30    | 37             | 74                   | 575     | 0.9            | C                          |                      |
| 3/4                                | 1800 | 56         | M7010-5        | Ⓢ                         | 730        | K          | 14.30    | 35             | 76                   | 575     | 1.2            | C                          |                      |
| 1                                  | 3600 | 56         | M7013-5        | Ⓢ                         | 766        | K          | 13.22    | 31             | 75.5                 | 575     | 1.2            | C                          |                      |
|                                    |      | 56         | M7014-5        | Ⓢ                         | 799        | K          | 14.30    | 38             | 75                   | 575     | 1.4            | C                          |                      |
|                                    | 1800 | 143T       | EM7014T-5      | Ⓢ                         | 1,280      | LS         | 15.23    | 49             | 85.5                 | 575     | 1.2            | A                          |                      |
|                                    |      | 143T       | M7014T-5       | Ⓢ                         | 833        | LS         | 14.36    | 43             | 82.5                 | 575     | 1.2            | D                          |                      |
| 1 1/2                              | 3600 | 143T       | EM7018T-5      | Ⓢ                         | 1,021      | L1         | 14.36    | 47             | 84                   | 575     | 1.6            | A                          |                      |
|                                    |      | 143T       | M7018T-5       | Ⓢ                         | 786        | L1         | 15.23    | 49             | 82.5                 | 575     | 1.5            | D                          |                      |
|                                    | 1800 | 145T       | EM7034T-5      | Ⓢ                         | 1,326      | LS         | 16.10    | 56             | 86.5                 | 575     | 1.6            | A                          |                      |
|                                    |      | 145T       | M7034T-5       | Ⓢ                         | 835        | LS         | 15.23    | 50             | 84                   | 575     | 1.7            | D                          |                      |
| 2                                  | 3600 | 145T       | EM7071T-5      | Ⓢ                         | 1,045      | L1         | 16.10    | 56             | 85.5                 | 575     | 2.2            | A                          |                      |
|                                    |      | 145T       | M7071T-5       | Ⓢ                         | 804        | L1         | 15.23    | 53             | 84                   | 575     | 2.1            | D                          |                      |
|                                    | 1800 | 145T       | EM7037T-5      | Ⓢ                         | 1,446      | LS         | 16.10    | 61             | 86.5                 | 575     | 2.2            | A                          |                      |
|                                    |      | 145T       | M7037T-5       | Ⓢ                         | 942        | LS         | 15.23    | 53             | 84                   | 575     | 2.2            | D                          |                      |
| 3                                  | 1800 | 182T       | EM7042T-5      | Ⓢ                         | 1,340      | L1         | 18.92    | 90             | 89.5                 | 575     | 3.4            | A                          |                      |
|                                    |      | 182T       | M7042T-5       | Ⓢ                         | 1,030      | LS         | 17.42    | 78             | 87.5                 | 575     | 3.3            | D                          |                      |
| 5                                  | 3600 | 184T       | EM7072T-5      | Ⓢ                         | 1,538      | L1         | 18.12    | 100            | 88.5                 | 575     | 4.8            | A                          |                      |
|                                    |      | 184T       | M7072T-5       | Ⓢ                         | 1,183      | L1         | 18.12    | 94             | 87.5                 | 575     | 5.5            | D                          |                      |
|                                    | 1800 | 184T       | EM7044T-5      | Ⓢ                         | 1,660      | L1         | 18.92    | 105            | 89.5                 | 575     | 5.2            | A                          |                      |
|                                    |      | 184T       | M7044T-5       | Ⓢ                         | 1,277      | LS         | 17.37    | 97             | 87.5                 | 575     | 5.2            | D                          |                      |
| 7 1/2                              | 1800 | 213T       | EM7047T-5      | Ⓢ                         | 2,204      | L1         | 19.57    | 178            | 91.7                 | 575     | 8.1            | A                          |                      |
|                                    |      | 213T       | M7047T-5       | Ⓢ                         | 1,574      | LS         | 19.57    | 170            | 89.5                 | 575     | 8.1            | D                          |                      |
| 10                                 | 1800 | 215T       | EM7170T-5      | Ⓢ                         | 2,767      | L1         | 19.90    | 251            | 91.7                 | 575     | 9.8            | A                          |                      |
|                                    |      | 215T       | M7170T-5       | Ⓢ                         | 2,131      | L1         | 19.90    | 217            | 89.5                 | 575     | 10.4           | D                          |                      |
| 15                                 | 1800 | 254T       | EM7054T-5      | Ⓢ                         | 3,791      | LS         | 25.50    | 370            | 92.4                 | 575     | 14.4           | A                          |                      |
|                                    |      | 254T       | M7054T-5       | Ⓢ                         | 2,461      | LS         | 25.50    | 351            | 91                   | 575     | 14.9           | D                          |                      |
| 20                                 | 1800 | 256T       | EM7056T-5      | Ⓢ                         | 4,913      | LS         | 25.50    | 393            | 93                   | 575     | 19.2           | A                          |                      |
|                                    |      | 256T       | M7056T-5       | Ⓢ                         | 3,191      | LS         | 25.50    | 361            | 91                   | 575     | 19.2           | D                          |                      |
| 25                                 | 1800 | 284T       | EM7058T-5      | Ⓢ                         | 5,960      | LS         | 28.61    | 542            | 93.6                 | 575     | 24.4           | A                          |                      |
|                                    |      | 284T       | M7058T-5       | Ⓢ                         | 3,948      | LS         | 28.61    | 528            | 92.4                 | 575     | 24.6           | D                          |                      |
| 30                                 | 1800 | 286T       | EM7060T-5      | Ⓢ                         | 7,266      | L1         | 28.61    | 567            | 93.6                 | 575     | 48.4           | A                          |                      |
|                                    |      | 286T       | M7060T-5       | Ⓢ                         | 4,735      | L1         | 28.61    | 552            | 92.4                 | 575     | 28.8           | D                          |                      |
| 40                                 | 1800 | 324T       | EM7062T-5      | Ⓢ                         | 9,738      | LS         | 32.00    | 767            | 94.1                 | 575     | 38.4           | A                          |                      |
|                                    |      | 324T       | M7062T-5       | Ⓢ                         | 6,447      | LS         | 32.00    | 761            | 93                   | 575     | 37.6           | D                          |                      |

<sup>(a)</sup> See notes on inside back flap.

■ Cast Iron Frame

**CAUTION:** Explosion-proof motors have a tight fit between mating parts to ensure the integrity of the explosion-proof enclosure. This can lead to an accumulation of moisture inside the motors due to condensation. Care should be used when selecting an explosion-proof motor, especially when installed outdoors and on intermittent duty. The Explosion-proof motors are not suitable for use with adjustable speed drives. Inverter Duty Explosion-proof motors must be used. See page 232.

General Information

Premium Efficient Super-E® Motors

Single Phase Motors

General Purpose Industrial Motors

Severe Duty Motors

Washdown Duty Motors

Explosion Proof Motors

Pump Motors

Light Industrial/Commercial Motors

HVAC Motors

575 Volt, Three Phase, Explosion Proof

| Hp                                     | RPM  | NEMA Frame | Catalog Number | XP (a) CIs/Grp | List Price | Mult. Sym. | "C" Dim. | Aprx. Wt. (lb) | Full Load Efficiency | Voltage | Full Load Amps | EISA Status (a) | Notes (a) |
|--|------|------------|----------------|----------------|------------|------------|----------|----------------|----------------------|---------|----------------|-----------------|-----------|
| <b>C-Face, Footless, No Drip Cover</b> |      |            |                |                |            |            |          |                |                      |         |                |                 |           |
| 1/2                                    | 1800 | 56C        | VM7006-5       | Ⓢ              | 825        | K          | 14.30    | 34             | 74                   | 575     | 0.9            | C               |           |
| 3/4                                    | 1800 | 56C        | VM7010-5       | Ⓢ              | 840        | K          | 14.30    | 35             | 76                   | 575     | 1.2            | C               |           |
| 1                                      | 1800 | 56C        | VM7014-5       | Ⓢ              | 882        | K          | 14.30    | 40             | 75                   | 575     | 1.4            | C               |           |
|  |      | 143TC      | VEM7014T-5     | Ⓢ              | 1,167      | L1         | 15.23    | 44             | 85.5                 | 575     | 1.1            | B               |           |
|  |      | 143TC      | VM7014T-5      | Ⓢ              | 952        | L1         | 14.36    | 44             | 82.5                 | 575     | 1.2            | B               |           |
| 1 1/2                                  | 1800 | 145TC      | VEM7034T-5     | Ⓢ              | 1,272      | L1         | 16.10    | 52             | 86.5                 | 575     | 1.6            | B               |           |
|  |      | 145TC      | VM7034T-5      | Ⓢ              | 1,026      | L1         | 15.23    | 50             | 84                   | 575     | 1.7            | B               |           |
| 2                                      | 1800 | 145TC      | VEM7037T-5     | Ⓢ              | 1,348      | L1         | 17.48    | 53             | 86.5                 | 575     | 2.2            | B               |           |
|  |      | 145TC      | VM7037T-5      | Ⓢ              | 1,110      | L1         | 15.23    | 51             | 84                   | 575     | 2.2            | B               |           |
| 3                                      | 1800 | 182TC      | VEM7042T-5     | Ⓢ              | 1,522      | L1         | 18.86    | 95             | 89.5                 | 575     | 3.2            | B               |           |
|  |      | 182TC      | VM7042T-5      | Ⓢ              | 1,423      | L1         | 18.86    | 92             | 87.5                 | 575     | 3.3            | B               |           |
| 5                                      | 1800 | 184TC      | VEM7044T-5     | Ⓢ              | 1,798      | L1         | 18.80    | 112            | 89.5                 | 575     | 5.2            | B               |           |
|  |      | 184TC      | VM7044T-5      | Ⓢ              | 1,733      | L1         | 18.80    | 109            | 87.5                 | 575     | 5.2            | B               |           |
| 7 1/2                                  | 1800 | 213TC      | VM7047T-5      | Ⓢ              | 2,006      | L1         | 19.19    | 171            | 89.5                 | 575     | 8.1            | B               |           |

(a) See notes on inside back flap.

■ Cast Iron Frame

**CAUTION:** Explosion-proof motors have a tight fit between mating parts to ensure the integrity of the explosion-proof enclosure. This can lead to an accumulation of moisture inside the motors due to condensation. Care should be used when selecting an explosion-proof motor, especially when installed outdoors and on intermittent duty. The Explosion-proof motors are not suitable for use with adjustable speed drives. Inverter Duty Explosion-proof motors must be used. See page 232.

General Information

Premium Efficient Super-E® Motors

Single Phase Motors

General Purpose Industrial Motors

Severe Duty Motors

Washdown Duty Motors

Explosion Proof Motors

Pump Motors

Light Industrial/Commercial Motors

HVAC Motors

**Severe Duty,  
Three Phase,  
1.15 Service Factor**

**3 thru 150 Hp**

**NEMA 182T thru 445T**

**Applications:** Harsh industrial environments requiring protection against corrosion, that contain hazardous gas and vapor, dust fibers, filings or other material that may have explosive properties.

**Features:** 1.15 Service factor, Severe Duty design includes rugged cast iron construction with corrosion resistant epoxy finish. Shaft slingers & inner caps installed on both ends of motor for bearing protection. Includes normally closed thermostats. UL & CSA approved for Division 1, Class 1, Group D, Class 2, Group E, F & G, T3C temperature code.



| Hp    | RPM  | NEMA Frame | Catalog Number   | XP <sup>(a)</sup> CIs/Grp | List Price | Mult. Sym. | "C" Dim. | Aprx. Wt. (lb) | Full Load Efficiency | Voltage | Full Load Amps | EISA Status <sup>(a)</sup> | Notes <sup>(a)</sup> |
|-------|------|------------|------------------|---------------------------|------------|------------|----------|----------------|----------------------|---------|----------------|----------------------------|----------------------|
| 3     | 1800 | 182T       | <b>EM7542T-I</b> | ③                         | 1,389      | SD         | 18.92    | 90             | 89.5                 | 230/460 | 4.2            | A                          | 1                    |
|       | 1200 | 213T       | <b>EM7536T-I</b> | ③                         | 1,996      | SD         | 20.32    | 152            | 89.5                 | 230/460 | 4.6            | A                          | 1                    |
| 5     | 3600 | 184T       | <b>EM7572T-I</b> | ③                         | 1,827      | SD         | 18.12    | 100            | 88.5                 | 230/460 | 5.9            | A                          | 1                    |
|       | 1800 | 184T       | <b>EM7544T-I</b> | ③                         | 1,721      | SD         | 18.92    | 105            | 89.5                 | 230/460 | 6.5            | A                          | 1                    |
|       | 1200 | 215T       | <b>EM7540T-I</b> | ③                         | 2,618      | SD         | 22.32    | 172            | 89.5                 | 230/460 | 7.2            | A                          | 1                    |
| 7 1/2 | 1800 | 213T       | <b>EM7547T-I</b> | ③                         | 2,122      | SD         | 19.57    | 178            | 91.7                 | 230/460 | 10.1           | A                          | 1                    |
|       | 1200 | 254T       | <b>EM7548T-I</b> | ③                         | 3,099      | SD         | 25.50    | 392            | 91                   | 230/460 | 10.7           | A                          | 1                    |
| 10    | 3600 | 215T       | <b>EM7574T-I</b> | ③                         | 2,583      | SD         | 22.32    | 190            | 90.2                 | 230/460 | 11.1           | A                          | 1                    |
|       | 1800 | 215T       | <b>EM7670T-I</b> | ③                         | 2,865      | SD         | 19.90    | 251            | 91.7                 | 230/460 | 12.2           | A                          | 1                    |
|       | 1200 | 256T       | <b>EM7565T-I</b> | ③                         | 3,726      | SD         | 25.50    | 370            | 91                   | 230/460 | 14.4           | A                          | 1                    |
| 15    | 1800 | 254T       | <b>EM7554T-I</b> | ③                         | 3,436      | SD         | 25.50    | 370            | 92.4                 | 230/460 | 18             | A                          | 1                    |
| 20    | 3600 | 256T       | <b>EM7559T-I</b> | ③                         | 3,746      | SD         | 25.50    | 395            | 91                   | 230/460 | 23             | A                          | 1                    |
|       | 1800 | 256T       | <b>EM7556T-I</b> | ③                         | 4,302      | SD         | 25.50    | 393            | 93                   | 230/460 | 24             | A                          | 1                    |
| 25    | 1800 | 284T       | <b>EM7558T-I</b> | ③                         | 5,400      | SD         | 28.61    | 542            | 93.6                 | 230/460 | 30.5           | A                          | 1                    |
| 30    | 1800 | 286T       | <b>EM7560T-I</b> | ③                         | 6,595      | SD         | 28.61    | 567            | 93.6                 | 230/460 | 36             | A                          | 1                    |
| 40    | 1800 | 324T       | <b>EM7562T-I</b> | ③                         | 8,825      | SD         | 32.00    | 767            | 94.1                 | 230/460 | 48             | A                          | 1                    |
| 50    | 1800 | 326T       | <b>EM7564T-I</b> | ③                         | 10,267     | SD         | 32.00    | 790            | 94.5                 | 230/460 | 58             | A                          | 1                    |
|       | 1200 | 365T       | <b>EM7585T-I</b> | ③                         | 11,127     | SD         | 33.44    | 950            | 94.1                 | 230/460 | 61.7           | A                          | 1                    |
| 60    | 1800 | 364T       | <b>EM7566T-I</b> | ③                         | 11,608     | SD         | 33.44    | 984            | 95                   | 230/460 | 95             | A                          | 1                    |
| 75    | 1800 | 365T       | <b>EM7568T-I</b> | ③                         | 12,083     | SD         | 33.44    | 973            | 95.4                 | 230/460 | 95.4           | A                          | 1                    |
|       | 1200 | 405T       | <b>EM7587T-I</b> | ③                         | 14,855     | SD         | 38.31    | 1335           | 94.5                 | 230/460 | 86.9           | A                          | 1                    |
| 100   | 1800 | 405T       | <b>EM7590T-I</b> | ③                         | 15,497     | SD         | 38.31    | 1404           | 95.4                 | 460     | 112            | A                          | 1                    |
|       | 1200 | 444T       | <b>EM7599T-I</b> | ③                         | 18,402     | SD         | 44.62    | 1860           | 95                   | 460     | 115            | A                          | 1                    |
| 125   | 1800 | 444T       | <b>EM7600T-I</b> | ③                         | 18,709     | SD         | 44.62    | 1908           | 95.4                 | 460     | 95.8           | A                          | 1                    |
| 150   | 1800 | 445T       | <b>EM7596T-I</b> | ③                         | 20,908     | SD         | 44.62    | 2048           | 95.8                 | 460     | 96.2           | A                          | 1                    |

<sup>(a)</sup> See notes on inside back flap.  
 ■ Cast Iron Frame

These motors expel condensation better than standard explosion proof designs. They are recommended for applications where motors may run intermittently, applications where explosion-proof motors are installed outdoors exposed to the environment, and may not be operated for extended periods of time. These explosion-proof motors are not suitable for use with adjustable speed drives. Inverter duty explosion-proof motors must be used. See page 232.

General Information

Premium Efficient Super-E® Motors

Single Phase Motors

General Purpose Industrial Motors

Severe Duty Motors

Washdown Duty Motors

Explosion Proof Motors

Pump Motors

Light Industrial/Commercial Motors

HVAC Motors

**Drill Rig Duty,  
Three Phase,  
1.15 Service Factor**

**1 thru 100 Hp**

**NEMA 56C thru 405T**



**Applications:** On and off shore drill rig service, bulk fuel terminals, and transfer stations. For use in high humidity hazardous-duty applications driving pumps, compressors, blowers, fans, and many other loads that require 1.15 service factor explosion-proof motors. Designed with features for use in the petroleum industry. Includes Class I, Group C & D approval for use in areas where hydrogen sulfide is present.

**Features:** Labyrinth-type recessed shaft slinger for increased bearing protection Explosion-proof breather/drain to prevent build up of condensation. 40°C ambient, Class F insulation. Corrosion resistant finish with two part epoxy coating. UL and CSA approved for Class I, Group C & D. 1.15 service factor. Suitable for 55°C @ 1.0 service factor.

| Hp                  | RPM  | NEMA Frame | Catalog Number | XP (a) CIs/Grp | List Price | Mult. Sym. | "C" Dim. | Aprx. Wt. (lb) | Full Load Efficiency | Voltage | Full Load Amps | EISA Status (a) | Notes (a) |
|---------------------|------|------------|----------------|----------------|------------|------------|----------|----------------|----------------------|---------|----------------|-----------------|-----------|
| <b>Foot Mounted</b> |      |            |                |                |            |            |          |                |                      |         |                |                 |           |
| 1                   | 3600 | 143T       | EM7013T-I      | Ⓢ              | 1,144      | SD         | 15.23    | 45             | 85.5                 | 230/460 | 1.4            | A               | 1, 19     |
|                     |      | 143T       | M7013T-I       | Ⓢ              | 880        | SD         | 14.36    | 41             | 82.5                 | 230/460 | 1.8            | D               | 1, 19     |
|                     | 1800 | 143T       | EM7014T-I      | Ⓢ              | 1,126      | SD         | 15.23    | 49             | 85.5                 | 230/460 | 1.5            | A               | 1, 19     |
|                     |      | 143T       | M7014T-I       | Ⓢ              | 841        | SD         | 14.12    | 52             | 82.5                 | 230/460 | 1.6            | D               | 1, 19     |
|                     | 1200 | 145T       | EM7032T-I      | Ⓢ              | 1,248      | SD         | 17.48    | 55             | 82.5                 | 230/460 | 1.7            | A               | 1, 19     |
|                     |      | 145T       | M7032T-I       | Ⓢ              | 960        | SD         | 15.09    | 50             | 80                   | 230/460 | 1.8            | D               | 1, 19     |
| 1 1/2               | 3600 | 143T       | EM7018T-I      | Ⓢ              | 1,135      | SD         | 14.36    | 47             | 84                   | 230/460 | 1.9            | A               | 1, 19     |
|                     |      | 143T       | M7018T-I       | Ⓢ              | 900        | SD         | 14.12    | 55             | 82.5                 | 230/460 | 2.1            | D               | 1, 19     |
|                     | 1800 | 145T       | EM7034T-I      | Ⓢ              | 1,166      | SD         | 16.10    | 56             | 86.5                 | 230/460 | 2              | A               | 1, 19     |
|                     |      | 145T       | M7034T-I       | Ⓢ              | 843        | SD         | 15.09    | 57             | 84                   | 230/460 | 2.4            | D               | 1, 19     |
|                     | 1200 | 182T       | EM7020T-I      | Ⓢ              | 1,718      | SD         | 17.42    | 96             | 87.5                 | 230/460 | 2.6            | A               | 1, 19     |
|                     |      | 182T       | M7020T-I       | Ⓢ              | 1,322      | SD         | 18.27    | 99             | 85.5                 | 230/460 | 2.8            | D               | 1, 19     |
| 2                   | 3600 | 145T       | EM7071T-I      | Ⓢ              | 1,241      | SD         | 16.10    | 56             | 85.5                 | 230/460 | 2.5            | A               | 1, 19     |
|                     |      | 145T       | M7071T-I       | Ⓢ              | 1,000      | SD         | 15.23    | 62             | 84                   | 230/460 | 2.6            | D               | 1, 19     |
|                     | 1800 | 145T       | EM7037T-I      | Ⓢ              | 1,271      | SD         | 16.10    | 61             | 86.5                 | 230/460 | 2.7            | A               | 1, 19     |
|                     |      | 145T       | M7037T-I       | Ⓢ              | 951        | SD         | 15.09    | 60             | 84                   | 230/460 | 3.1            | D               | 1, 19     |
|                     | 1200 | 184T       | EM7041T-I      | Ⓢ              | 1,770      | SD         | 18.92    | 109            | 88.5                 | 230/460 | 3.3            | A               | 1, 19     |
|                     |      | 184T       | M7041T-I       | Ⓢ              | 1,361      | SD         | 18.27    | 114            | 86.5                 | 230/460 | 3.3            | D               | 1, 19     |
| 3                   | 3600 | 182T       | EM7026T-I      | Ⓢ              | 1,422      | SD         | 16.05    | 70             | 86.5                 | 230/460 | 3.7            | A               | 1, 19     |
|                     |      | 182T       | M7026T-I       | Ⓢ              | 1,121      | SD         | 16.77    | 91             | 85.5                 | 230/460 | 3.5            | D               | 1, 19     |
|                     | 1800 | 182T       | EM7042T-I      | Ⓢ              | 1,341      | SD         | 18.92    | 90             | 89.5                 | 230/460 | 4.2            | A               | 1, 19     |
|                     |      | 182T       | EM7042T-I-5    | Ⓢ              | 1,341      | SD         | 18.92    | 90             | 89.5                 | 575     | 3.4            | A               | 1, 19     |
|                     |      | 182T       | M7042T-I       | Ⓢ              | 1,033      | SD         | 18.27    | 105            | 87.5                 | 230/460 | 4.1            | D               | 1, 19     |
|                     |      | 182T       | M7042T-I-5     | Ⓢ              | 1,033      | SD         | 18.27    | 99             | 87.5                 | 575     | 3.3            | D               | 1, 19     |
| 1200                | 213T | EM7036T-I  | Ⓢ              | 1,929          | SD         | 20.32      | 152      | 89.5           | 230/460              | 4.6     | A              | 1, 19           |           |
|                     | 213T | M7036T-I   | Ⓢ              | 1,484          | SD         | 19.57      | 155      | 87.5           | 230/460              | 4.6     | D              | 1, 19           |           |
| 5                   | 3600 | 184T       | EM7072T-I      | Ⓢ              | 1,766      | SD         | 18.12    | 100            | 88.5                 | 230/460 | 5.9            | A               | 1, 19     |
|                     |      | 184T       | M7072T-I       | Ⓢ              | 1,412      | SD         | 18.27    | 108            | 87.5                 | 230/460 | 5.6            | D               | 1, 19     |
|                     | 1800 | 184T       | EM7044T-I      | Ⓢ              | 1,663      | SD         | 18.92    | 105            | 89.5                 | 230/460 | 6.5            | A               | 1, 19     |
|                     |      | 184T       | EM7044T-I-5    | Ⓢ              | 1,663      | SD         | 18.92    | 105            | 89.5                 | 575     | 5.2            | A               | 1, 19     |
|                     |      | 184T       | M7044T-I       | Ⓢ              | 1,281      | SD         | 18.27    | 118            | 87.5                 | 230/460 | 6.7            | D               | 1, 19     |
|                     |      | 184T       | M7044T-I-5     | Ⓢ              | 1,281      | SD         | 18.27    | 114            | 87.5                 | 575     | 5.2            | D               | 1, 19     |
| 1200                | 215T | EM7040T-I  | Ⓢ              | 2,529          | SD         | 22.32      | 172      | 89.5           | 230/460              | 7.2     | A              | 1, 19           |           |
|                     | 215T | M7040T-I   | Ⓢ              | 1,945          | SD         | 20.32      | 165      | 87.5           | 230/460              | 7.4     | D              | 1, 19           |           |
| 7 1/2               | 3600 | 213T       | EM7045T-I      | Ⓢ              | 2,122      | SD         | 19.57    | 172            | 89.5                 | 230/460 | 8.9            | A               | 1, 19     |
|                     |      | 213T       | M7045T-I       | Ⓢ              | 1,632      | SD         | 19.57    | 159            | 88.5                 | 230/460 | 8.9            | D               | 1, 19     |
|                     | 1800 | 213T       | EM7047T-I      | Ⓢ              | 2,050      | SD         | 19.57    | 178            | 91.7                 | 230/460 | 10.1           | A               | 1, 19     |
|                     |      | 213T       | EM7047T-I-5    | Ⓢ              | 2,050      | SD         | 19.57    | 178            | 91.7                 | 575     | 8.1            | A               | 1, 19     |
|                     |      | 213T       | M7047T-I       | Ⓢ              | 1,579      | SD         | 20.32    | 177            | 89.5                 | 230/460 | 10.2           | D               | 1, 19     |
|                     |      | 213T       | M7047T-I-5     | Ⓢ              | 1,579      | SD         | 20.32    | 165            | 89.5                 | 575     | 8.2            | D               | 1, 19     |
| 1200                | 254T | EM7048T-I  | Ⓢ              | 2,994          | SD         | 25.50      | 392      | 91             | 230/460              | 10.7    | A              | 1, 19           |           |
|                     | 254T | M7048T-I   | Ⓢ              | 2,303          | SD         | 25.50      | 381      | 89.5           | 230/460              | 11.1    | D              | 1, 19           |           |

(a) See notes on inside back flap.

■ Cast Iron Frame

These motors expel condensation better than standard explosion proof designs. They are recommended for applications where motors may run intermittently, applications where explosion-proof motors are installed outdoors exposed to the environment, and may not be operated for extended periods of time. These explosion-proof motors are not suitable for use with adjustable speed drives. Inverter duty explosion-proof motors must be used. See page 232.

General Information

Premium Efficient Super-E® Motors

Single Phase Motors

General Purpose Industrial Motors

Severe Duty Motors

Washdown Duty Motors

Explosion Proof Motors

Pump Motors

Light Industrial/Commercial Motors

HVAC Motors

**Drill Rig Duty, Three Phase, 1.15 Service Factor**

| Hp   | RPM  | NEMA Frame | Catalog Number | XP <sup>(a)</sup> Cts/Grp | List Price | Mult. Sym. | "C" Dim. | Aprx. Wt. (lb) | Full Load Efficiency | Voltage | Full Load Amps | EISA Status <sup>(a)</sup> | Notes <sup>(a)</sup> |       |
|------|------|------------|----------------|---------------------------|------------|------------|----------|----------------|----------------------|---------|----------------|----------------------------|----------------------|-------|
| 10   | 3600 | 215T       | EM7174T-I      | ⑤                         | 2,496      | SD         | 19.31    | 188            | 90.2                 | 230/460 | 11.1           | A                          | 1, 19                |       |
|      |      | 215T       | M7174T-I       | ⑤                         | 1,920      | SD         | 20.03    | 228            | 89.5                 | 230/460 | 11.6           | D                          | 1, 19                |       |
|      | 1800 | 215T       | EM7170T-I      | ⑤                         | 2,767      | SD         | 19.90    | 251            | 91.7                 | 230/460 | 12.2           | A                          | 1, 19                |       |
|      |      | 215T       | EM7170T-I-5    | ⑤                         | 2,767      | SD         | 19.90    | 251            | 91.7                 | 575     | 9.8            | A                          | 1, 19                |       |
|      |      | 215T       | M7170T-I       | ⑤                         | 2,131      | SD         | 20.03    | 225            | 89.5                 | 230/460 | 12.7           | D                          | 1, 19                |       |
|      |      | 215T       | M7170T-I-5     | ⑤                         | 2,131      | SD         | 20.03    | 230            | 89.5                 | 575     | 11.4           | D                          | 1, 19                |       |
|      |      | 256T       | EM7065T-I      | ⑤                         | 3,600      | SD         | 25.50    | 370            | 91                   | 230/460 | 14.4           | A                          | 1, 19                |       |
|      | 256T | M7065T-I   | ⑤              | 2,769                     | SD         | 25.50      | 369      | 89.5           | 230/460              | 14.4    | D              | 1, 19                      |                      |       |
|      | 15   | 3600       | 254T           | EM7053T-I                 | ⑤          | 2,822      | SD       | 25.50          | 305                  | 91      | 230/460        | 17.2                       | A                    | 1, 19 |
|      |      |            | 254T           | M7053T-I                  | ⑤          | 2,171      | SD       | 25.50          | 344                  | 90.2    | 230/460        | 17                         | D                    | 1, 19 |
| 1800 |      | 254T       | EM7054T-I      | ⑤                         | 3,320      | SD         | 25.50    | 370            | 92.4                 | 230/460 | 18             | A                          | 1, 19                |       |
|      |      | 254T       | EM7054T-I-5    | ⑤                         | 3,320      | SD         | 25.50    | 370            | 92.4                 | 575     | 14.4           | A                          | 1, 19                |       |
|      |      | 254T       | M7054T-I       | ⑤                         | 2,469      | SD         | 25.50    | 387            | 91                   | 230/460 | 18.2           | D                          | 1, 19                |       |
|      |      | 254T       | M7054T-I-5     | ⑤                         | 2,469      | SD         | 25.50    | 381            | 91                   | 575     | 14.9           | D                          | 1, 19                |       |
|      |      | 284T       | EM7057T-I      | ⑤                         | 5,803      | SD         | 28.61    | 450            | 91.7                 | 230/460 | 21             | A                          | 1, 19                |       |
| 284T |      | M7057T-I   | ⑤              | 4,464                     | SD         | 28.61      | 430      | 90.2           | 230/460              | 21      | D              | 1, 19                      |                      |       |
| 20   |      | 3600       | 256T           | EM7059T-I                 | ⑤          | 3,619      | SD       | 25.50          | 395                  | 91      | 230/460        | 23                         | A                    | 1, 19 |
|      |      |            | 256T           | M7059T-I                  | ⑤          | 2,784      | SD       | 25.50          | 344                  | 90.2    | 230/460        | 23                         | D                    | 1, 19 |
|      | 1800 | 256T       | EM7056T-I      | ⑤                         | 4,156      | SD         | 25.50    | 393            | 93                   | 230/460 | 24             | A                          | 1, 19                |       |
|      |      | 256T       | EM7056T-I-5    | ⑤                         | 4,156      | SD         | 25.50    | 393            | 93                   | 575     | 19.2           | A                          | 1, 19                |       |
|      |      | 256T       | M7056T-I       | ⑤                         | 3,201      | SD         | 25.50    | 387            | 91                   | 230/460 | 25             | D                          | 1, 19                |       |
|      |      | 256T       | M7056T-I-5     | ⑤                         | 3,201      | SD         | 25.50    | 381            | 91                   | 575     | 19.2           | D                          | 1, 19                |       |
|      |      | 286T       | EM7079T-I      | ⑤                         | 5,958      | SD         | 28.61    | 540            | 91.7                 | 230/460 | 26             | A                          | 1, 19                |       |
|      | 286T | M7079T-I   | ⑤              | 4,583                     | SD         | 28.61      | 436      | 90.2           | 230/460              | 27      | D              | 1, 19                      |                      |       |
|      | 25   | 3600       | 284TS          | EM7063T-I                 | ⑤          | 4,817      | SD       | 27.24          | 530                  | 91.7    | 230/460        | 28                         | A                    | 1, 19 |
|      |      |            | 284TS          | M7063T-I                  | ⑤          | 3,705      | SD       | 27.23          | 445                  | 91      | 230/460        | 28.5                       | D                    | 1, 19 |
| 1800 |      | 284T       | EM7058T-I      | ⑤                         | 5,218      | SD         | 28.61    | 542            | 93.6                 | 230/460 | 30.5           | A                          | 1, 19                |       |
|      |      | 284T       | EM7058T-I-5    | ⑤                         | 5,218      | SD         | 28.61    | 542            | 93.6                 | 575     | 24.4           | A                          | 1, 19                |       |
|      |      | 284T       | M7058T-I       | ⑤                         | 3,960      | SD         | 28.61    | 549            | 92.4                 | 230/460 | 30.8           | D                          | 1, 19                |       |
|      |      | 284T       | M7058T-I-5     | ⑤                         | 3,960      | SD         | 28.61    | 415            | 92.4                 | 575     | 24.6           | D                          | 1, 19                |       |
|      |      | 324T       | EM7082T-I      | ⑤                         | 7,450      | SD         | 32.00    | 740            | 93                   | 230/460 | 32             | A                          | 1, 19                |       |
| 324T |      | M7082T-I   | ⑤              | 5,731                     | SD         | 32.00      | 685      | 91.7           | 230/460              | 31      | D              | 1, 19                      |                      |       |
| 30   |      | 3600       | 286TS          | EM7083T-I                 | ⑤          | 5,662      | SD       | 27.24          | 560                  | 91.7    | 230/460        | 33                         | A                    | 1, 19 |
|      |      |            | 286TS          | M7083T-I                  | ⑤          | 4,355      | SD       | 27.23          | 445                  | 91      | 230/460        | 34                         | D                    | 1, 19 |
|      | 1800 | 286T       | EM7060T-I      | ⑤                         | 6,363      | SD         | 28.61    | 567            | 93.6                 | 230/460 | 36             | A                          | 1, 19                |       |
|      |      | 286T       | EM7060T-I-5    | ⑤                         | 6,363      | SD         | 28.61    | 567            | 93.6                 | 575     | 48.4           | A                          | 1, 19                |       |
|      |      | 286T       | M7060T-I       | ⑤                         | 4,735      | SD         | 28.61    | 584            | 92.4                 | 230/460 | 36             | D                          | 1, 19                |       |
|      |      | 286T       | M7060T-I-5     | ⑤                         | 4,735      | SD         | 28.61    | 583            | 92.4                 | 575     | 28.8           | D                          | 1, 19                |       |
|      |      | 326T       | EM7080T-I      | ⑤                         | 8,219      | SD         | 32.00    | 750            | 93                   | 230/460 | 39             | A                          | 1, 19                |       |
|      | 326T | M7080T-I   | ⑤              | 6,322                     | SD         | 32.00      | 751      | 91.7           | 230/460              | 37      | D              | 1, 19                      |                      |       |
|      | 40   | 3600       | 324TS          | EM7067T-I                 | ⑤          | 7,552      | SD       | 30.50          | 740                  | 92.4    | 230/460        | 45                         | A                    | 1, 19 |
|      |      |            | 324TS          | M7067T-I                  | ⑤          | 5,809      | SD       | 30.50          | 649                  | 91.7    | 230/460        | 45                         | D                    | 1, 19 |
| 1800 |      | 324T       | EM7062T-I      | ⑤                         | 8,527      | SD         | 32.00    | 767            | 94.1                 | 230/460 | 48             | A                          | 1, 19                |       |
|      |      | 324T       | EM7062T-I-5    | ⑤                         | 8,527      | SD         | 32.00    | 767            | 94.1                 | 575     | 38.4           | A                          | 1, 19                |       |
|      |      | 324T       | M7062T-I       | ⑤                         | 6,468      | SD         | 32.00    | 765            | 93                   | 230/460 | 47             | D                          | 1, 19                |       |
|      |      | 324T       | M7062T-I-5     | ⑤                         | 6,468      | SD         | 32.00    | 764            | 93                   | 575     | 37.6           | D                          | 1, 19                |       |
|      |      | 364T       | EM7084T-I      | ⑤                         | 9,526      | SD         | 33.44    | 910            | 94.1                 | 230/460 | 49.4           | A                          | 1, 19                |       |
| 364T |      | M7084T-I   | ⑤              | 7,328                     | SD         | 33.25      | 889      | 93             | 230/460              | 49      | D              | 1, 19                      |                      |       |
| 50   |      | 3600       | 326TS          | EM7081T-I                 | ⑤          | 9,670      | SD       | 30.50          | 724                  | 93      | 230/460        | 56                         | A                    | 1, 19 |
|      |      |            | 326TS          | M7081T-I                  | ⑤          | 7,439      | SD       | 30.50          | 705                  | 92.4    | 230/460        | 56                         | D                    | 1, 19 |
|      | 1800 | 326T       | EM7064T-I      | ⑤                         | 9,919      | SD         | 32.00    | 790            | 94.5                 | 230/460 | 58             | A                          | 1, 19                |       |
|      |      | 326T       | EM7064T-I-5    | ⑤                         | 9,919      | SD         | 32.00    | 790            | 94.5                 | 575     | 46.4           | A                          | 1, 19                |       |
|      |      | 326T       | M7064T-I       | ⑤                         | 7,526      | SD         | 32.00    | 798            | 93                   | 230/460 | 60             | D                          | 1, 19                |       |
|      |      | 326T       | M7064T-I-5     | ⑤                         | 7,526      | SD         | 32.00    | 795            | 93                   | 575     | 47             | D                          | 1, 19                |       |
|      |      | 365T       | EM7085T-I      | ⑤                         | 10,751     | SD         | 33.44    | 950            | 94.1                 | 230/460 | 61.7           | A                          | 1, 19                |       |
|      | 365T | M7085T-I   | ⑤              | 8,270                     | SD         | 33.25      | 765      | 93             | 230/460              | 61      | D              | 1, 19                      |                      |       |

<sup>(a)</sup> See notes on inside back flap.

■ Cast Iron Frame

These motors expel condensation better than standard explosion proof designs. They are recommended for applications such as fuel transfer terminals and fuel truck loading facilities where motors may run intermittently, applications where explosion-proof motors are installed outdoors exposed to the environment, and may not be operated for extended periods of time. These explosion-proof motors are not suitable for use with adjustable speed drives. Inverter duty explosion-proof motors must be used. See page 232.

**Drill Rig Duty, Three Phase, 1.15 Service Factor**

| Hp                          | RPM  | NEMA Frame | Catalog Number | XP (a)    | List Price | Mult. Sym. | "C" Dim. | Aprx. Wt. (lb) | Full Load Efficiency | Voltage | Full Load Amps | EISA Status (a) | Notes (a) |       |
|-----------------------------|------|------------|----------------|-----------|------------|------------|----------|----------------|----------------------|---------|----------------|-----------------|-----------|-------|
| 60                          | 3600 | 364TS      | EM7310T-I      | Ⓢ         | 10,386     | SD         | 33.44    | 984            | 93.6                 | 230/460 | 65.1           | A               | 1, 19     |       |
|                             |      | 364TS      | M7310T-I       | Ⓢ         | 8,593      | SD         | 31.13    | 945            | 93                   | 230/460 | 66             | D               | 1, 19     |       |
|                             | 1800 | 364T       | EM7066T-I      | Ⓢ         | 11,215     | SD         | 33.44    | 965            | 95                   | 230/460 | 68             | A               | 1, 19     |       |
|                             |      | 364T       | EM7066T-I-5    | Ⓢ         | 11,215     | SD         | 33.44    | 965            | 95                   | 575     | 91.6           | A               | 1, 19     |       |
|                             |      | 364T       | M7066T-I       | Ⓢ         | 8,537      | SD         | 33.25    | 981            | 93.6                 | 230/460 | 69             | D               | 1, 19     |       |
|                             |      | 364T       | M7066T-I-5     | Ⓢ         | 8,537      | SD         | 33.25    | 979            | 93.6                 | 575     | 56             | D               | 1, 19     |       |
|                             |      | 404T       | EM7086T-I      | Ⓢ         | 12,562     | SD         | 38.31    | 1300           | 94.5                 | 230/460 | 69             | A               | 1, 19     |       |
|                             | 404T | M7086T-I   | Ⓢ              | 9,868     | SD         | 38.75      | 1325     | 93.6           | 230/460              | 70      | D              | 1, 19           |           |       |
|                             | 75   | 3600       | 364TS          | M7313T-I  | Ⓢ          | 9,958      | SD       | 31.13          | 985                  | 93      | 230/460        | 83              | D         | 1, 19 |
|                             |      |            | 365TS          | EM7313T-I | Ⓢ          | 11,687     | SD       | 33.44          | 964                  | 93.6    | 230/460        | 80.7            | A         | 1, 19 |
| 1800                        |      | 365T       | EM7068T-I      | Ⓢ         | 11,675     | SD         | 33.44    | 1065           | 95.4                 | 230/460 | 86             | A               | 1, 19     |       |
|                             |      | 365T       | EM7068T-I-5    | Ⓢ         | 11,675     | SD         | 33.44    | 1065           | 95.4                 | 575     | 68.9           | A               | 1, 19     |       |
|                             |      | 365T       | M7068T-I       | Ⓢ         | 10,500     | SD         | 33.25    | 1044           | 94.1                 | 230/460 | 85             | D               | 1, 19     |       |
|                             |      | 365T       | M7068T-I-5     | Ⓢ         | 10,500     | SD         | 33.25    | 1031           | 94.1                 | 575     | 69             | D               | 1, 19     |       |
|                             |      | 405T       | EM7087T-I      | Ⓢ         | 14,352     | SD         | 38.31    | 1335           | 94.5                 | 230/460 | 86.9           | A               | 1, 19     |       |
| 405T                        |      | M7087T-I   | Ⓢ              | 11,224    | SD         | 38.75      | 1338     | 93.6           | 230/460              | 88      | D              | 1, 19           |           |       |
| 1200                        |      | 405T       | EM7090T-I      | Ⓢ         | 14,973     | SD         | 38.31    | 1335           | 95.4                 | 230/460 | 112            | A               | 1, 19     |       |
|                             |      | 405T       | EM7090T-I-5    | Ⓢ         | 14,973     | SD         | 38.31    | 1335           | 95.4                 | 575     | 90             | A               | 1, 19     |       |
|                             | 405T | M7090T-I   | Ⓢ              | 12,693    | SD         | 38.75      | 1367     | 94.5           | 230/460              | 109     | D              | 1, 19           |           |       |
|                             | 405T | M7090T-I-5 | Ⓢ              | 12,693    | SD         | 38.75      | 1372     | 94.5           | 575                  | 87      | D              | 1, 19           |           |       |
| <b>C-Face, Foot Mounted</b> |      |            |                |           |            |            |          |                |                      |         |                |                 |           |       |
| 1/2                         | 1800 | 56C        | CM7006-I       | Ⓢ         | 827        | SD         | 13.14    | 53             | 75.5                 | 230/460 | 0.8            | C               | 1, 19     |       |
| 3/4                         | 1800 | 56C        | CM7010-I       | Ⓢ         | 843        | SD         | 14.31    | 49             | 78.5                 | 230/460 | 1.4            | C               | 1, 19     |       |
| 1                           | 1800 | 56C        | CM7014-I       | Ⓢ         | 899        | SD         | 14.31    | 51             | 82.5                 | 230/460 | 1.6            | C               | 1, 19     |       |
| 1 1/2                       | 1800 | 145TC      | CEM7034T-I     | Ⓢ         | 1,378      | SD         | 16.10    | 59             | 86.5                 | 230/460 | 0              | A               | 1, 19     |       |
|                             |      | 145TC      | CM7034T-I      | Ⓢ         | 1,056      | SD         | 15.23    | 58             | 84                   | 230/460 | 2.4            | D               | 1, 19     |       |
| 2                           | 1800 | 145TC      | CEM7037T-I     | Ⓢ         | 1,461      | SD         | 16.10    | 65             | 86.5                 | 230/460 | 2.7            | A               | 1, 19     |       |
|                             |      | 145TC      | CM7037T-I      | Ⓢ         | 1,140      | SD         | 15.23    | 60             | 84                   | 230/460 | 3.1            | D               | 1, 19     |       |
| 3                           | 1800 | 182TC      | CEM7042T-I     | Ⓢ         | 1,645      | SD         | 20.36    | 85             | 89.5                 | 230/460 | 4.2            | A               | 1, 19     |       |
|                             |      | 182TC      | CM7042T-I      | Ⓢ         | 1,336      | SD         | 19.59    | 111            | 87.5                 | 230/460 | 4.1            | D               | 1, 19     |       |
| 5                           | 1800 | 184TC      | CEM7044T-I     | Ⓢ         | 1,989      | SD         | 18.80    | 96             | 89.5                 | 230/460 | 6.5            | A               | 1, 19     |       |
|                             |      | 184TC      | CM7044T-I      | Ⓢ         | 1,607      | SD         | 19.59    | 122            | 87.5                 | 230/460 | 6.7            | D               | 1, 19     |       |
| 7 1/2                       | 1800 | 213TC      | CEM7047T-I     | Ⓢ         | 2,333      | SD         | 20.36    | 175            | 91.7                 | 230/460 | 9.4            | A               | 1, 19     |       |
|                             |      | 213TC      | CM7047T-I      | Ⓢ         | 1,862      | SD         | 21.07    | 177            | 89.5                 | 230/460 | 10.2           | D               | 1, 19     |       |
| 10                          | 1800 | 215TC      | CEM7170T-I     | Ⓢ         | 2,838      | SD         | 20.65    | 252            | 91.7                 | 230/460 | 12.2           | A               | 1, 19     |       |
|                             |      | 215TC      | CM7170T-I      | Ⓢ         | 2,202      | SD         | 20.78    | 232            | 89.5                 | 230/460 | 14.2           | D               | 1, 19     |       |
| 15                          | 1800 | 254TC      | CEM7054T-I     | Ⓢ         | 4,694      | SD         | 26.00    | 380            | 92.4                 | 230/460 | 18             | A               | 1, 19     |       |
|                             |      | 254TC      | CM7054T-I      | Ⓢ         | 3,843      | SD         | 26.00    | 333            | 91                   | 230/460 | 18.2           | D               | 1, 19     |       |
| 20                          | 1800 | 256TC      | CEM7056T-I     | Ⓢ         | 5,564      | SD         | 26.00    | 405            | 93                   | 230/460 | 24             | A               | 1, 19     |       |
|                             |      | 256TC      | CM7056T-I      | Ⓢ         | 4,464      | SD         | 26.00    | 356            | 91                   | 230/460 | 25             | D               | 1, 19     |       |
| 25                          | 1800 | 284TC      | CEM7058T-I     | Ⓢ         | 6,813      | SD         | 28.61    | 555            | 93.6                 | 230/460 | 30.5           | A               | 1, 19     |       |
|                             |      | 284TC      | CM7058T-I      | Ⓢ         | 5,555      | SD         | 28.61    | 554            | 92.4                 | 230/460 | 30.8           | D               | 1, 19     |       |
| 30                          | 1800 | 286TC      | CEM7060T-I     | Ⓢ         | 7,907      | SD         | 28.61    | 574            | 93.6                 | 230/460 | 36             | A               | 1, 19     |       |
|                             |      | 286TC      | CM7060T-I      | Ⓢ         | 6,279      | SD         | 28.61    | 584            | 92.4                 | 230/460 | 36             | D               | 1, 19     |       |
| 40                          | 1800 | 324TC      | CEM7062T-I     | Ⓢ         | 10,547     | SD         | 32.00    | 775            | 94.1                 | 230/460 | 48             | A               | 1, 19     |       |
|                             |      | 324TC      | CM7062T-I      | Ⓢ         | 8,488      | SD         | 32.00    | 808            | 93                   | 230/460 | 47             | D               | 1, 19     |       |
| 50                          | 1800 | 326TC      | CEM7064T-I     | Ⓢ         | 11,993     | SD         | 32.00    | 795            | 94.5                 | 230/460 | 57             | A               | 1, 19     |       |
|                             |      | 326TC      | CM7064T-I      | Ⓢ         | 9,600      | SD         | 32.00    | 779            | 93                   | 230/460 | 60             | D               | 1, 19     |       |

(a) See notes on inside back flap.

■ Cast Iron Frame

These motors expel condensation better than standard explosion proof designs. They are recommended for applications such as fuel transfer terminals and fuel truck loading facilities where motors may run intermittently, applications where explosion-proof motors are installed outdoors exposed to the environment, and may not be operated for extended periods of time. These explosion-proof motors are not suitable for use with adjustable speed drives. Inverter duty explosion-proof motors must be used. See page 232.

General Information

Premium Efficient Super-E® Motors

Single Phase Motors

General Purpose Industrial Motors

Severe Duty Motors

Washdown Duty Motors

Explosion Proof Motors

Pump Motors

Light Industrial/Commercial Motors

HVAC Motors

**Drill Rig Duty, Three Phase, 1.15 Service Factor**

| Hp                      | RPM  | NEMA Frame | Catalog Number   | XP <sup>(a)</sup> CIs/Grp | List Price | Mult. Sym. | "C" Dim. | Aprx. Wt. (lb) | Full Load Efficiency | Voltage | Full Load Amps | EISA Status <sup>(a)</sup> | Notes <sup>(a)</sup> |
|-------------------------|------|------------|------------------|---------------------------|------------|------------|----------|----------------|----------------------|---------|----------------|----------------------------|----------------------|
| <b>C-Face, Footless</b> |      |            |                  |                           |            |            |          |                |                      |         |                |                            |                      |
| 1/2                     | 1800 | 56C        | <b>VM7006-I</b>  | ⑤                         | 756        | SD         | 13.14    | 53             | 75.5                 | 230/460 | 0.8            | C                          | 1, 19                |
| 3/4                     | 1800 | 56C        | <b>VM7010-I</b>  | ⑤                         | 840        | SD         | 14.31    | 49             | 78.5                 | 230/460 | 1.4            | C                          | 1, 19                |
| 1                       | 1800 | 56C        | <b>VM7014-I</b>  | ⑤                         | 882        | SD         | 14.31    | 51             | 82.5                 | 230/460 | 1.6            | C                          | 1, 19                |
|                         |      | 143TC      | <b>VM7014T-I</b> | ⑤                         | 952        | SD         | 15.23    | 50             | 82.5                 | 230/460 | 1.6            | B                          | 1, 19                |
| 1 1/2                   | 1800 | 56C        | <b>VM7034-I</b>  | ⑤                         | 950        | SD         | 15.17    | 55             | 84                   | 230/460 | 2.4            | C                          | 1, 19                |
|                         |      | 145TC      | <b>VM7034T-I</b> | ⑤                         | 1,026      | SD         | 15.23    | 58             | 84                   | 230/460 | 2.4            | B                          | 1, 19                |
| 2                       | 1800 | 145TC      | <b>VM7037T-I</b> | ⑤                         | 1,110      | SD         | 15.23    | 60             | 84                   | 230/460 | 3.1            | B                          | 1, 19                |
| 3                       | 1800 | 182TC      | <b>VM7042T-I</b> | ⑤                         | 1,423      | SD         | 19.91    | 109            | 87.5                 | 230/460 | 4.1            | B                          | 1, 19                |
| 5                       | 1800 | 184TC      | <b>VM7044T-I</b> | ⑤                         | 1,733      | SD         | 19.91    | 122            | 87.5                 | 230/460 | 6.7            | B                          | 1, 19                |
| 7 1/2                   | 1800 | 213TC      | <b>VM7047T-I</b> | ⑤                         | 2,006      | SD         | 21.06    | 165            | 89.5                 | 230/460 | 10.2           | B                          | 1, 19                |
| 10                      | 1800 | 215TC      | <b>VM7170T-I</b> | ⑤                         | 2,433      | SD         | 20.77    | 230            | 89.5                 | 230/460 | 14.2           | B                          | 1, 19                |

<sup>(a)</sup> See notes on inside back flap.

■ Cast Iron Frame

These motors expel condensation better than standard explosion proof designs. They are recommended for applications such as fuel transfer terminals and fuel truck loading facilities where motors may run intermittently, applications where explosion-proof motors are installed outdoors exposed to the environment, and may not be operated for extended periods of time. These explosion-proof motors are not suitable for use with adjustable speed drives. Inverter duty explosion-proof motors must be used. See page 232.

**Drill Rig Duty, Single Phase, C-Face, 1.15 Service Factor, Foot Mounted**

**1/3 thru 1 Hp**

**NEMA 56C**

**Applications:** Pumps, blowers, valves and other applications in petro-chemical industry needing Severe Duty, Division I, Class I, Group C & D approval.

**Features:** Corrosion resistant finish, breather drain, labyrinth seal on output shaft. UL approved conduit box, 1.15 service factor, UL and CSA approved for Class I, Group C & D.



| Hp  | RPM  | NEMA Frame | Catalog Number  | XP <sup>(a)</sup> CIs/Grp | List Price | Mult. Sym. | "C" Dim. | Aprx. Wt. (lb) | Full Load Efficiency | Voltage     | Full Load Amps | EISA Status <sup>(a)</sup> | Notes <sup>(a)</sup> |
|-----|------|------------|-----------------|---------------------------|------------|------------|----------|----------------|----------------------|-------------|----------------|----------------------------|----------------------|
| 1/3 | 1800 | 56C        | <b>CL5001-I</b> | ⑤                         | 803        | K          | 14.31    | 46             | 55                   | 115/208-230 | 3.3            | C                          |                      |
| 1/2 | 1800 | 56C        | <b>CL5004-I</b> | ⑤                         | 804        | K          | 14.31    | 52             | 64                   | 115/208-230 | 4              | C                          |                      |
| 3/4 | 1800 | 56C        | <b>CL5007-I</b> | ⑤                         | 858        | K          | 15.17    | 61             | 68                   | 115/230     | 5.3            | C                          |                      |
| 1   | 1800 | 56C        | <b>CL5023-I</b> | ⑤                         | 925        | K          | 16.05    | 62             | 68                   | 115/230     | 6.5            | C                          |                      |

<sup>(a)</sup> See notes on inside back flap.

These motors expel condensation better than standard explosion proof designs. They are recommended for applications such as fuel transfer terminals and fuel truck loading facilities where motors may run intermittently, applications where explosion-proof motors are installed outdoors exposed to the environment, and may not be operated for extended periods of time. These explosion-proof motors are not suitable for use with adjustable speed drives. Inverter duty explosion-proof motors must be used. See page 232.

General Information

Premium Efficient Super-E® Motors

Single Phase Motors

General Purpose Industrial Motors

Severe Duty Motors

Washdown Duty Motors

Explosion Proof Motors

Pump Motors

Light Industrial/Commercial Motors

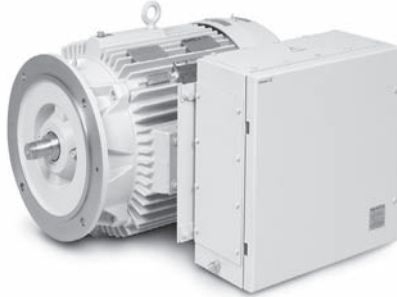
HVAC Motors

**ATEX Directive  
94/9/EC**

**1 thru 500 Hp  
.75 thru 373 kW**



**NEMA 180T thru 449T  
IEC 112M thru 280H**



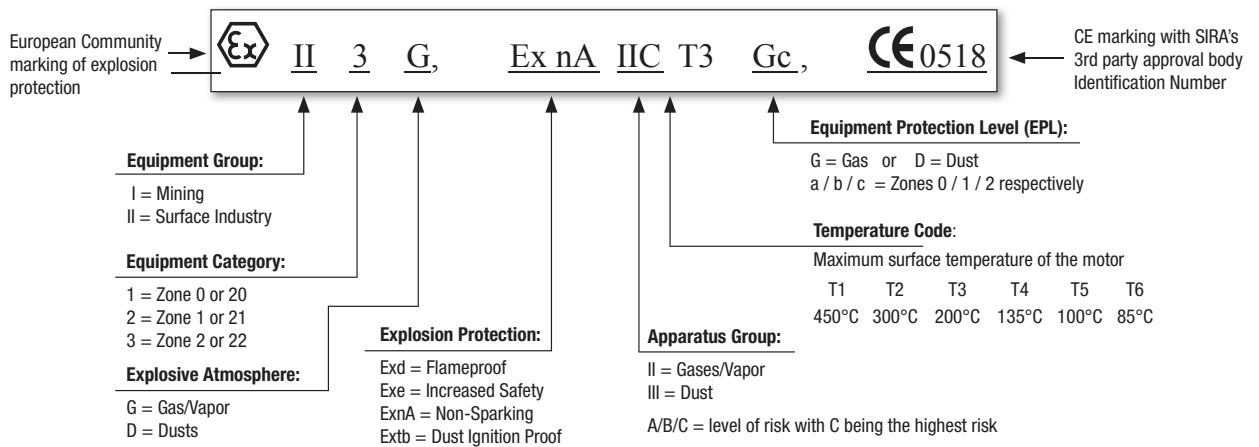
Dual Protection ATEX Motor with Increased Safety conduit box, 360T Frame, flange mounted.

**Applications:** Baldor offers a wide variety of Custom Explosion Proof motors for use outside the US market where other than UL certification is required. Baldor's ATEX motor certification capabilities meet the Atmospheric Explosive directive (ATEX 94/9/EC) required on all equipment used in hazardous locations within the European market. Baldor uses SIRA as our 3rd party approval body for ATEX certification. Baldor ATEX motors also carry the IECEx certification to satisfy the broader international market.

**Features:** Rugged Cast Iron frame, endplates, conduit box and fan cover, Super-E NEMA Premium® designs (IEC 60034-30 IE3), 1.15 Service Factor, Usable on Sine wave and Inverter power, CE compliant.

**ATEX APPROVED MOTORS**

It is important to have a good understanding of ATEX terminology to be able to determine which Baldor ATEX certified motor is right for your application. This terminology is different from those used by UL and should not be mixed with UL terms in specifications or quotes. Specific ATEX markings are required to certify that a motor may be used in specific potentially explosive environment. Typical ATEX markings include:



**BALDOR ATEX CAPABILITIES MATRIX - Group II (Surface Industry Applications)**

| Environment                                   | Explosion Protection  | Max. HP (kW)  | Frame NEMA (IEC)         | Max. Voltage | Apparatus Group   | Temp Code   | Ambient Temp. (°C)   |
|---|---|---------------|--------------------------|--------------|-------------------|-------------|----------------------|
| Explosive Gas Environments (G)                | Exd (Flameproof) Zone 1   | 500HP (373kW) | 180T – 449T (112M-280M)  | 1,000 volts  | IIA & IIB         | T3, T4 & T5 | -20 to +40 (+65 Max) |
|   | ExnA (Non-Sparking) Zone 2  | 450HP (335kW) | 180T – 4412T (112M-280H) | 2,300 volts  | IIA, IIB & IIC    | T2, T3 & T4 | -20 to +40 (-30 Min) |
| Explosive Dust Environments (D)               | Extd (Dust Ignition Proof) Zone 21  | 500HP (373kW) | 180T – 449T (112M-280M)  | 1,000 volts  | IIIA, IIIB & IIIC | T3, T4 & T5 | -20 to +40 (+65 Max) |
|   | Baldor motors marked "Extb" for Zone 21 may be additionally labeled "suitable for Zone 22 (EPL Dc)"   |               |                          |              |                   |             |                      |
| Dual Protection Gas & Dust Environments (G/D) | Baldor ATEX motors can be dual labeled for "Exd" (Flameproof) and "Extd" (Dust Ignition Proof), Zones 1, 21 to meet the most hazardous explosive atmosphere applications. |               |                          |              |                   |             |                      |
| Increased Safety                              | "Exd" motors can be supplied with an Increased Safety conduit box separately labeled "Exe"  |               |                          |              |                   |             |                      |

Baldor takes pride in tailoring our custom motors to fit our customer's specific requirements. For a full range of available options, pricing and availability contact your local Baldor Sales Representative.

General Information  
Premium Efficient Super-E® Motors  
Single Phase Motors  
General Purpose Industrial Motors  
Severe Duty Motors  
Washdown Duty Motors  
Explosion Proof Motors  
Pump Motors  
Light Industrial/Commercial Motors  
HVAC Motors