

SSE Stainless Steel Encapsulated 1/2 thru 15 HP 56C thru 256TC

Engineered to perform in harsh conditions

Increasing demands for food safety requires that equipment in food processing facilities be properly designed and protected. Baldor•Reliance Stainless steel motors provide superior protection against high pressure cleaning with features for reliable operation and low cost of ownership. The SSE motor is designed specifically to provide extended life in the challenging environments of the food and beverage industry.

Applications

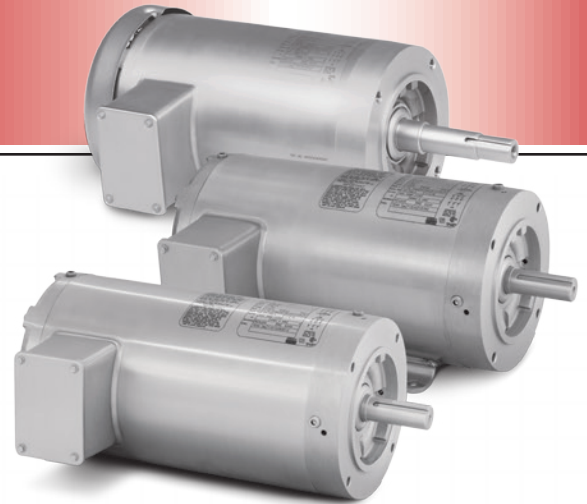
Food Processing, pharmaceutical, packaging, outdoor and highly corrosive environments which expose the motor to high pressure caustic washdown.

Available Ratings

- TENV 1/2 - 3 HP
- TEFC 1/2 - 15 HP
- C-face, foot mounted
- C-face, footless
- 230/460V and 575V

Electrical Features

- NEMA Premium® efficiency
- Class H insulation system
- 1.15 service factor
- NEMA Design B torques
- 3 year warranty
- Epoxy encapsulation of the winding and leads into conduit box
- Inverter Ready – 20:1 VT, 2:1 CT



Mechanical Features

- External surfaces are 300 series Stainless steel
- Nameplate data laser etched on the motor frame.
- Continuously welded conduit box to provide a leak-proof seal.
- Ingress protection – IP56 & IP69K for water
- Premium internal and external bearing protection



TENV SSE motor being tested for IP69K

BALDOR®

A MEMBER OF THE ABB GROUP

SSE Stainless Steel Encapsulated Motor

High Temperature Class H insulation – Provides longer insulation and motor life.

Windings engineered for durability – Epoxy encapsulation system prevents any moisture from reaching the windings and seals the lead entrance to the conduit box.

Neoprene rubber gasket on conduit box – Ensures a tight, waterproof seal.



Waterproof Connectors – Heat shrink sealed closed-end connector kit provides leak-proof connections.

Precision die cast aluminum rotor – Precision balanced and coated with an epoxy primer to resist corrosion.

Lipped conduit box lid prevents water from entering.

Fully welded foot and conduit box

Nameplate data laser etched on motor frame eliminates contamination trapped beneath traditional nameplates

Neoprene o-rings seal frame to endplate joint and prevent water entry

Easily removable condensation drains on each end

Premium external and internal bearing protection on each end of the motor.

Shaft made of 300 Stainless – Prevents rust and corrosion.

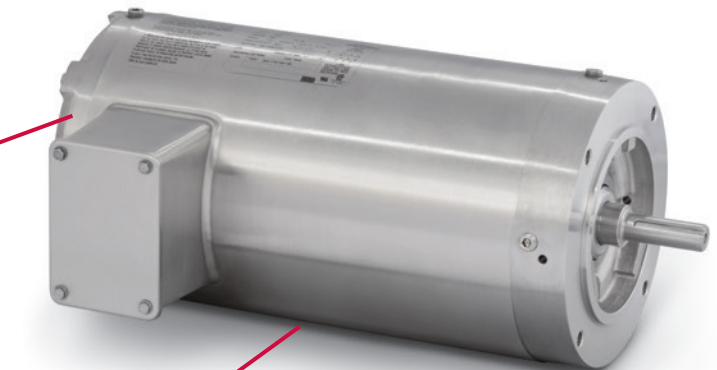
Four face drain holes – Plugs provided with motor for applications that need drains plugged.



TENV VS TEFC Motors

Where feasible, **TENV** motors, as well as footless motors, reduce the number of points for food to collect.

No Fan and Fan Cover – eliminates potential for water and contaminant ingress at the non-drive end of the motor.



Footless Motors – can be used in a variety of applications for trouble free sanitation where motor feet are not required.

**Three Phase, Totally Enclosed,
C-Face, Foot Mounted, Encapsulated**

IP56

**IP69K
for Water**



HP	RPM	NEMA Frame	Enclosure	Catalog Number	List Price	Multi. Sym.	"C" Dim	Aprx. Wt. (lb)	Full Load Eff.	Voltage	Full Load Amps
F1 Mounting											
1/2	3600	56C	TENV	CSSEWDM3537	1,412	WD	11.75	46	84	208-230/460	0.7
	1800	56C	TENV	CSSEWDM3538	1,433	WD	11.75	50	84	230/460	0.9
	1200	56C	TENV	CSSEWDM3539	1,721	WD	12.75	37	77	208-230/460	0.9
3/4	3600	56C	TENV	CSSEWDM3541	1,459	WD	11.75	53	86.5	208-230/460	1
	1800	56C	TENV	CSSEWDM3542	1,481	WD	12.75	58	84	208-230/460	1.3
	1200	56C	TENV	CSSEWDM3543	1,769	WD	13.63	63	82.5	208-230/460	1.3
1	3600	56C	TENV	CSSEWDM3545	1,532	WD	12.75	59	82.5	230/460	1.4
	1800	56C	TENV	CSSEWDM3546	1,547	WD	12.75	59	87.5	230/460	1.5
		143TC	TENV	CSSEWDM3546T	1,560	WD	12.80	59	87.5	230/460	1.5
1 1/2	3600	56C	TENV	CSSEWDM3550	1,552	WD	13.63	62	85.5	230/460	1.8
		143TC	TENV	CSSEWDM3550T	1,565	WD	13.68	63	85.5	230/460	1.8
	1800	56C	TEFC	CSSEWDM3554	1,559	WD	14.75	66	88.5	230/460	2.2
		145TC	TEFC	CSSEWDM3554T	1,574	WD	14.81	68	88.5	230/460	2.2
		145TC	TENV	CSSEWDM3554T	1,546	WD	15.05	50	86.5	230/460	2.2
	1200	182TC	TEFC	CSSEWDM3607T	2,027	WD	19.25	83	87.5	230/460	2.5
	2	3600	56C	TEFC	CSSEWDM3555	1,857	WD	14.75	68	86.5	230/460
56C			TENV	CSSEWDM3555	1,829	WD	15.00	64	88.5	230/460	2.4
145TC			TEFC	CSSEWDM3555T	1,870	WD	14.81	71	86.5	230/460	2.5
1800		145TC	TENV	CSSEWDM3555T	1,842	WD	15.05	64	88.5	230/460	2.4
		56C	TEFC	CSSEWDM3558	1,884	WD	16.13	72	88.5	230/460	2.7
		56C	TENV	CSSEWDM3558	1,856	WD	15.00	56	88.5	230/460	2.8
		145TC	TEFC	CSSEWDM3558T	1,897	WD	16.19	73	88.5	230/460	2.7
145TC	TENV	CSSEWDM3558T	1,869	WD	15.05	56	88.5	230/460	2.8		
1200	184TC	TEFC	CSSEWDM3614T	2,251	WD	19.25	125	88.5	230/460	3.5	
3	3600	145TC	TEFC	CSSEWDM3559T	2,267	WD	16.19	81	86.5	230/460	3.7
		182TC	TENV	CSSEWDM3610T	2,322	WD	17.43	96	89.5	230/460	3.5
	1800	182TC	TEFC	CSSEWDM3611T	2,283	WD	19.25	112	89.5	230/460	4.2
		182TC	TENV	CSSEWDM3611T	2,248	WD	17.43	96	89.5	230/460	4
1200	213TC	TEFC	CSSEWDM3704T	3,172	WD	21.62	179	89.5	230/460	4.4	
5	3600	184TC	TEFC	CSSEWDM3613T	2,474	WD	17.75	108	89.5	230/460	5.6
		1800	184TC	TEFC	CSSEWDM3615T	2,493	WD	19.25	124	89.5	230/460
	1200	215TC	TEFC	CSSEWDM3708T	3,513	WD	23.06	210	89.5	230/460	7.2
7 1/2	3600	213TC	TEFC	CSSEWDM3709T	3,104	WD	20.43	178	91	230/460	8.3
	1800	213TC	TEFC	CSSEWDM3710T	3,168	WD	21.62	189	91.7	230/460	9.5
	1200	254TC	TEFC	CSSEWDM22976T	5,314	WD	24.67	300	91	230/460	10.7
10	3600	215TC	TEFC	CSSEWDM3711T	3,520	WD	21.62	202	91.7	230/460	10.6
	1800	215TC	TEFC	CSSEWDM3714T	3,730	WD	23.06	187	92.4	230/460	12.5
	1200	256TC	TEFC	CSSEWDM23932T	6,106	WD	25.67	360	91	230/460	15.1
15	3600	215TC	TEFC	CSSEWDM3713T	5,279	WD	23.06	187	91.7	230/460	17
F2 Mounting											
1	1800	143TC	TENV	CSSEWDM3546T	1,560	WD	12.80	60	87.5	230/460	1.5
1 1/2	1800	145TC	TEFC	CSSEWDM3554T	1,574	WD	14.81	62	88.5	230/460	2.2
2	1800	145TC	TEFC	CSSEWDM3558T	1,897	WD	16.19	73	88.5	230/460	2.7
3	1800	182TC	TEFC	CSSEWDM3611T	2,283	WD	19.25	111	89.5	230/460	4.2
5	1800	184TC	TEFC	CSSEWDM3615T	2,493	WD	19.25	122	89.5	230/460	6.5
575 Volt											
1/2	3600	56C	TENV	CSSEWDM3537-5	1,412	WD	11.75	35	84	575	0.6
	1800	56C	TENV	CSSEWDM3538-5	1,433	WD	11.75	35	84	575	0.7
3/4	1800	56C	TENV	CSSEWDM3542-5	1,481	WD	12.75	40	84	575	1
1	1800	56C	TENV	CSSEWDM3546-5	1,547	WD	12.75	43	87.5	575	1.2
		143TC	TENV	CSSEWDM3546T-5	1,560	WD	12.80	43	87.5	575	1.2
1 1/2	1800	56C	TEFC	CSSEWDM3554-5	1,559	WD	14.75	62	86.5	575	1.7
		145TC	TEFC	CSSEWDM3554T-5	1,574	WD	14.81	64	86.5	575	1.7
2	1800	145TC	TEFC	CSSEWDM3558T-5	1,897	WD	16.19	72	88.5	575	2.2
3	3600	145TC	TEFC	CSSEWDM3559T-5	2,267	WD	16.19	81	86.5	575	2.9
	1800	182TC	TEFC	CSSEWDM3611T-5	2,283	WD	19.25	112	89.5	575	3.3
5	3600	184TC	TEFC	CSSEWDM3613T-5	2,474	WD	17.75	110	89.5	575	4.5
	1800	184TC	TEFC	CSSEWDM3615T-5	2,493	WD	19.25	125	89.5	575	5.1

**Three Phase, Totally Enclosed,
C-Face, Footless, Encapsulated**

IP56

**IP69K
for Water**



HP	RPM	NEMA Frame	Enclosure	Catalog Number	List Price	Multi. Sym.	"C" Dim	Aprx. Wt. (lb)	Full Load Eff.	Voltage	Full Load Amps
1/2	3600	56C	TENV	VSSEWDM3537	1,344	WD	11.75	49	84	208-230/460	0.7
	1800	56C	TEFC	VSSEWDM3538	1,395	WD	12.88	49	84	208-230/460	0.9
		56C	TENV	VSSEWDM3538	1,367	WD	11.75	49	84	208-230/460	0.9
3/4	3600	56C	TENV	VSSEWDM3541	1,393	WD	11.75	54	86.5	208-230/460	1
	1800	56C	TEFC	VSSEWDM3542	1,443	WD	13.88	54	84	230/460	1.3
		56C	TENV	VSSEWDM3542	1,415	WD	12.75	53	84	230/460	1.3
1	1200	56C	TENV	VSSEWDM3543	1,703	WD	13.63	61	82.5	208-230/460	1.3
	3600	56C	TENV	VSSEWDM3545	1,465	WD	12.75	57	82.5	230/460	1.4
		56C	TEFC	VSSEWDM3546	1,509	WD	13.88	59	87.5	230/460	1.5
		56C	TENV	VSSEWDM3546	1,480	WD	12.75	58	87.5	230/460	1.5
		143TC	TEFC	VSSEWDM3546T	1,522	WD	13.94	59	87.5	230/460	1.5
	1800	143TC	TENV	VSSEWDM3546T	1,494	WD	12.80	58	87.5	230/460	1.5
		56C	TEFC	VSSEWDM3556	1,763	WD	16.13	72	84	230/460	1.7
56C		TENV	VSSEWDM3550	1,485	WD	13.63	66	85.5	230/460	1.8	
1 1/2	3600	143TC	TENV	VSSEWDM3550T	1,499	WD	13.68	66	85.5	230/460	1.8
		56C	TEFC	VSSEWDM3554	1,493	WD	14.75	66	88.5	230/460	2.2
	1800	56C	TENV	VSSEWDM3554	1,465	WD	15.00	63	86.5	230/460	2.2
		145TC	TEFC	VSSEWDM3554T	1,537	WD	14.81	66	88.5	230/460	2.2
		145TC	TENV	VSSEWDM3554T	1,509	WD	15.05	63	86.5	230/460	2.2
2	3600	56C	TENV	VSSEWDM3555	1,764	WD	15.00	61	88.5	230/460	2.4
		145TC	TEFC	VSSEWDM3555T	1,831	WD	14.81	70	86.5	230/460	2.5
		145TC	TENV	VSSEWDM3555T	1,803	WD	15.05	61	88.5	230/460	2.4
	1800	56C	TEFC	VSSEWDM3558	1,818	WD	16.13	71	88.5	230/460	2.7
		56C	TENV	VSSEWDM3558	1,790	WD	15.00	63	88.5	230/460	2.8
		145TC	TEFC	VSSEWDM3558T	1,854	WD	16.19	71	88.5	230/460	2.7
3	3600	145TC	TENV	VSSEWDM3558T	1,826	WD	15.05	63	88.5	230/460	2.8
		145TC	TEFC	VSSEWDM3559T	2,199	WD	16.19	61	86.5	230/460	3.7
	1800	182TC	TENV	VSSEWDM3610T	2,262	WD	17.43	93	89.5	230/460	3.5
		182TC	TEFC	VSSEWDM3611T	2,217	WD	19.25	60	89.5	230/460	4.2
5	182TC	TENV	VSSEWDM3611T	2,182	WD	17.43	109	89.5	230/460	4	
	3600	184TC	TEFC	VSSEWDM3613T	2,390	WD	19.25	81	89.5	230/460	5.6
7 1/2	1800	184TC	TEFC	VSSEWDM3615T	2,409	WD	19.25	101	89.5	230/460	6.5
	3600	213TC	TEFC	VSSEWDM3709T	2,989	WD	20.43	129	91	230/460	8.3
10	1800	213TC	TEFC	VSSEWDM3710T	3,053	WD	21.62	132	91.7	230/460	9.5
	3600	215TC	TEFC	VSSEWDM3711T	3,405	WD	21.62	154	91.7	230/460	10.6
15	1800	215TC	TEFC	VSSEWDM3714T	3,615	WD	23.06	187	92.4	230/460	12.5
	3600	215TC	TEFC	VSSEWDM3713T	5,164	WD	23.06	187	91.7	230/460	17

**Close-Coupled Pump, Three Phase, Totally Enclosed,
C-Face, Foot Mounted, Encapsulated**

IP56

**IP69K
for Water**



HP	RPM	NEMA Frame	Enclosure	Catalog Number	List Price	Multi. Sym.	"C" Dim	Aprx. Wt. (lb)	Full Load Eff.	Voltage	Full Load Amps
1	1800	143JM	TENV	JMSSEWDM3546T	1,805	WD	14.94	62	87.5	230/460	1.5
1 1/2	3600	143JM	TENV	JMSSEWDM3550T	1,809	WD	15.82	68	85.5	230/460	1.8
	1800	145JM	TEFC	JMSSEWDM3554T	1,820	WD	16.96	69	88.5	230/460	2.2
2	3600	145JM	TEFC	JMSSEWDM3555T	2,138	WD	16.96	72	86.5	230/460	2.5
	1800	145JM	TEFC	JMSSEWDM3558T	2,168	WD	18.34	74	88.5	230/460	2.7
3	3600	145JM	TEFC	JMSSEWDM3559T	2,568	WD	18.34	83	86.5	230/460	3.7
	1800	182JM	TEFC	JMSSEWDM3611T	2,696	WD	19.73	108	89.5	230/460	4.2
5	3600	184JM	TEFC	JMSSEWDM3613T	2,904	WD	18.23	104	89.5	230/460	5.6
	1800	184JM	TEFC	JMSSEWDM3615T	2,924	WD	19.73	121	89.5	230/460	6.5
7 1/2	3600	213JM	TEFC	JMSSEWDM3709T	3,423	WD	21.56	184	91	230/460	8.3
	1800	213JM	TEFC	JMSSEWDM3710T	3,487	WD	22.75	135	91.7	230/460	9.5
10	3600	215JM	TEFC	JMSSEWDM3711T	3,838	WD	22.75	154	91.7	230/460	10.6
	1800	215JM	TEFC	JMSSEWDM3714T	4,049	WD	24.19	187	92.4	230/460	12.5

BALDOR

A MEMBER OF THE ABB GROUP

Baldor Electric Company

P.O. Box 2400 • Fort Smith, AR 72902-2400 U.S.A.

Phone (479) 646-4711 • Fax (479) 648-5792

www.baldor.com