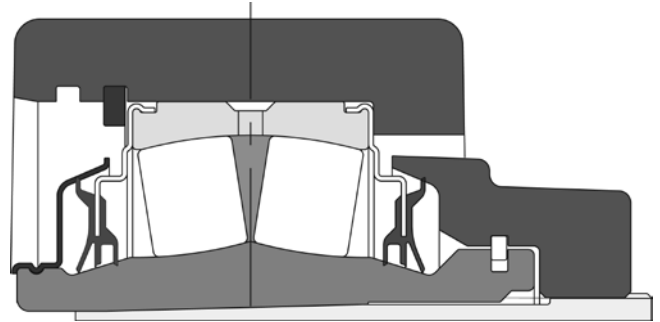


Featured Product **IMPERIAL Spherical Roller Bearing Solution**

- Patented IMPERIAL “Push/Pull” adapter mounting system allows bearing to be installed or removed within 15 minutes
- Clearances are preset and bearing is greased at the factory
- Expansion & non-expansion, field convertible
- Triple lip contact seals for wet or dirty applications
- Labyrinth non-contact seals for high speed & high temperature applications
- Available in SAF, SN, S-2000 and Type E dimensions

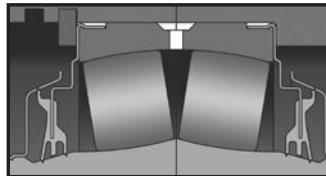


Patented Sealing Systems

An ineffective seal can allow contaminants to enter into a bearing, which can cause failure. However, with IMPERIAL bearing inserts, you get two exclusive seals for maximum sealing protection.

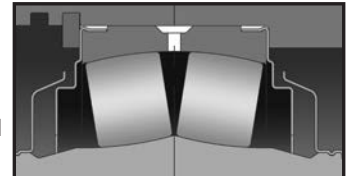
TRIDENT Seals

For dirty environments, low-to-medium speeds, and normal ambient conditions, these inserts feature our proven TRIDENT seal. Made of nitrile material, this triple-lip rubbing seal assures a low coefficient of friction, and its seal land maintains full seal contact when misaligned.



Labyrinth Seals

For higher speeds and temperatures, the IMPERIAL inserts offer labyrinth seals with corrosion-resistant flingers and a clearance steel seal carrier.



Full Shaft Contact Virtually Eliminates Fretting Corrosion

With DODGE IMPERIAL bearings, you can remove the bearing from the shaft and immediately mount a new bearing on the same shaft without first reworking the shaft. DODGE IMPERIAL bearings leave very few, if any, markings on the shaft; and, with 360° of locking pressure, there is virtually no fretting corrosion, less heat, and less vibration.



Setscrew Bearing after 500 hours



IMPERIAL bearing after 2500 hours



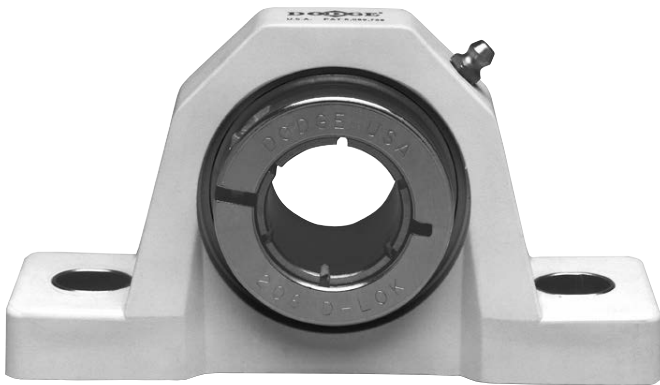
Setscrew Ball Bearings

- Two types: normal duty SC and medium duty SCM
- Single-lip contact seal with flingers (standard), low-torque labyrinth seal (optional), end covers available from stock
- Interchangeable mounting dimensions with most competitive products
- 65° setscrew angle for greater holding power and ease on installation in confined areas
- Anti-rotation device on SC and SCM bearings prevents insert rotation associated with heavy loads, vibration, unbalanced loads, and high-speed applications
- Expansion pillow blocks available for popular shaft sizes
- High-temperature option available to 400°F on SC and SCM
- Plus or minus 2° static misalignment
- Available in inch and metric bores



GRIP TIGHT Ball Bearings

- Two types: normal duty GT and medium duty GTM
- Single-lip contact seal with flingers (standard), low-torque labyrinth seal (optional), end covers available from stock
- Interchangeable mounting dimensions with most competitive setscrew, eccentric collar, and concentric clamp collar products
- Thin Wall Adapter mounting offers 360° full shaft contact and concentricity. No shaft marring or fretting corrosion like setscrew and eccentric collar products. Integral dismount feature easily removes the bearing from the shaft. Turned, ground, and polished shafting is not required.
- Anti-rotation device prevents insert rotation associated with heavy loads, vibration, unbalanced loads, and high-speed applications
- Expansion pillow blocks available for popular shaft sizes
- High-temperature option available to 400°F
- Plus or minus 2° static misalignment
- Available in inch and metric bores and all popular housings



Washdown Duty Ball Bearings

- Reinforced polymer and stainless steel housings
- Patented polymer housing includes anti-microbial agent which resists bacterial and fungus growth
- Two inserts: Corrosion resistant (SC set screw, D-LOK concentric, GRIP TIGHT adapter mount) and stainless steel (SC set screw)
- Three locking devices: 65° setscrew angle (SC), concentric clamp collar (D-LOK), and GRIP TIGHT® adapter mount
- Triple-lip contact seal with flingers (standard), metal detectable end covers available from stock
- Interchangeable mounting dimensions with most competitive products
- Anti-rotation device prevents insert rotation associated with heavy loads, vibration, unbalanced loads, and high-speed applications
- Plus or minus 2° static misalignment
- Available in inch and metric bores up to 210 series



Type E-XTRA® Tapered Roller Bearings

- Tapered rolling elements
- Completely assembled, factory adjusted, and properly lubricated – shaft ready
- E-TECT seal option for harshest environments
- Comparable mounting dimensions with ball bearings
- E-XTRA allows easy upgrade from ball bearings
- Use when thrust loads are a concern
- Available in inch and metric bores



S-2000 Spherical Roller Bearings

- High-capacity, double-row spherical rollers
- Setscrew shaft mount
- Permits static or dynamic misalignment of $\pm 1^\circ$
- Factory sealed, lubed, and adjusted
- Available with TRIDENT triple lip and labyrinth seal options
- Springlok collar mount with 65° setscrew spacing for optimum clamping force
- Available in Type E dimensions
- Front and back end covers available

IMPERIAL IP Spherical Roller Bearings

- Industry's only push/pull adapter mount system
- Available in 2-bolt and 4-bolt pillow blocks, flanges, and take-ups
- Patented IMPERIAL adapter mounting system
- Accepts commercial tolerance shafting
- Full concentric shaft attachment with adaptor sleeve mount
- Virtually eliminates fretting corrosion
- Capable of withstanding static or dynamic misalignment of $\pm 1^\circ$
- Shaft-ready out of the box
- Available with TRIDENT triple lip and labyrinth seal options
- Available in Type E dimensions
- Dimensionally equivalent to S-2000 series
- Front and back end covers available



S-2000 HD Spherical Roller Bearings

- Setscrew shaft mount
- Multiple steel housing designs for harshest applications
- Replaceable inserts
- Choice of triple lip or labyrinth seals
- Expansion/non-expansion convertible
- Quick and simple installation
- Easy insert replacement
- Front and back end covers available
- Steel Housings
- Type E dimensions

IMPERIAL HD Spherical Roller Bearings

- Patented IMPERIAL adapter mounting system
- Multiple steel housing designs for harshest applications
- Replaceable inserts
- Choice of triple lip or labyrinth seals
- Expansion/non-expansion convertible
- Easier to install/remove than conventional adapters
- Dimensionally equivalent to S-2000 HD series
- Front and back end covers available
- Steel Housings
- Type E dimensions



USAF Spherical Roller Bearings

- 22200, 22300, 23000, 23100, and 23200 Series
- Industry-standard dimensions interchangeable with SAF housings
- Five sealing options to match most operating conditions
- Cast-in dimples locate drill holes for lube fitting, vents, sensors, and mounting modifications
- Standard housings have two oversized drains adaptable for circulating oil systems
- Pry slots allow easy separation of the pillow block



ISAF Spherical Roller Bearings

- Dimensionally interchangeable with SAF style pillow blocks
- Patented IMPERIAL adapter mounting system
- Easy installation – no feeler gauges needed
- Available with TRIDENT triple lip and labyrinth seal options
- $\pm 1^\circ$ static or dynamic misalignment capability
- Shaft-ready out of the box, no assembly of components necessary
- Now also available with integral, hydraulically-assisted mounting and dismounting, in sizes 5-7/16" to 15"



SNX Plummer Blocks

- ISO-conformant plummer block interchangeable with metric SNL, SNV, SNA, and other SN products
- Cast iron
- Housed and sealed, general purpose, high-capacity, double-row, spherical roller bearings
- Adapter and direct mount
- Five different sealing options to match most operating conditions
- Grease or oil capable
- Also available in SDX and SDXD ductile housings



ISN Spherical Roller Bearings

- Dimensionally interchangeable with 500 series SN plummer blocks
- Industry's only push/pull adapter mount system
- Available in two-bolt pillow blocks
- Accepts commercial shaft tolerances
- Installation and removal in fewer than 15 minutes
- Fully concentric shaft attachment with adaptor sleeve mount
- Capable of withstanding static or dynamic misalignment of $\pm 1^\circ$
- Shaft-ready out of the box
- Available with TRIDENT triple lip or labyrinth seal options
- Sizes range from 30mm through 140mm

BALDOR
A MEMBER OF THE ABB GROUP

P.O. Box 2400, Fort Smith, AR 72902-2400 U.S.A., Ph: (1) 479.646.4711, Fax (1) 479.648.5792, International Fax (1) 479.648.5895

Baldor - Dodge

6040 Ponders Court, Greenville, SC 29615-4617 U.S.A., Ph: (1) 864.297.4800, Fax: (1) 864.281.2433

www.baldor.com