

Reno Regional Warehouse

Local Inventory ensures that you have the Dodge product you need, when you need it. The Reno Regional Warehouse is stocked with the entire line of Dodge products - which means the right product is at your door in under 48 hours.



Customer Service Phone #s & Call hours

	Phone #	Hours
West Coast Region	864-284-5150	6 – 5 PST
Rocky Mountain Region	864-284-5180	8 – 5 CST

After Hours Support: 864-297-4800
 Conveyor Components: 864-297-8287

Shipment Cut-Off Times

LTL	UPS Ground	UPS NDA	UPS Freight
2:00 PM pst	5:00 PM pst	5:00 PM pst	2:00 PM pst

LA to Salt Lake City,
to Portland in 1 day

Phoenix and Seattle is 1-2 days

Warehouse Address:

695 Vista Blvd. Suite 103,
Sparks, NV 89434

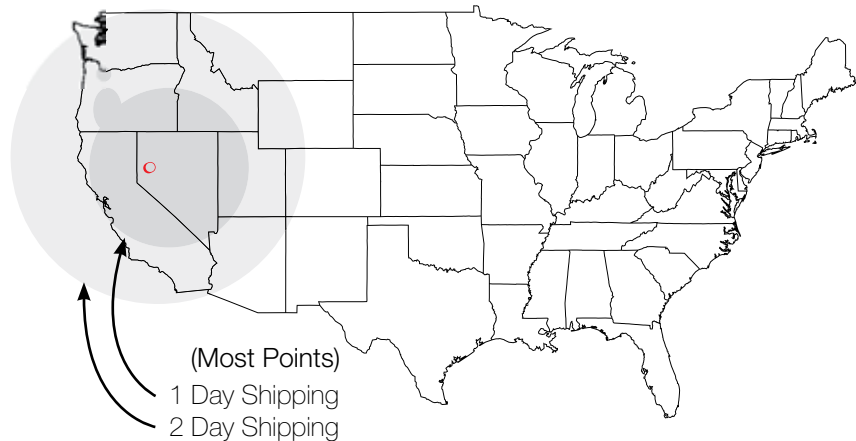
Inventory Overview:

General:

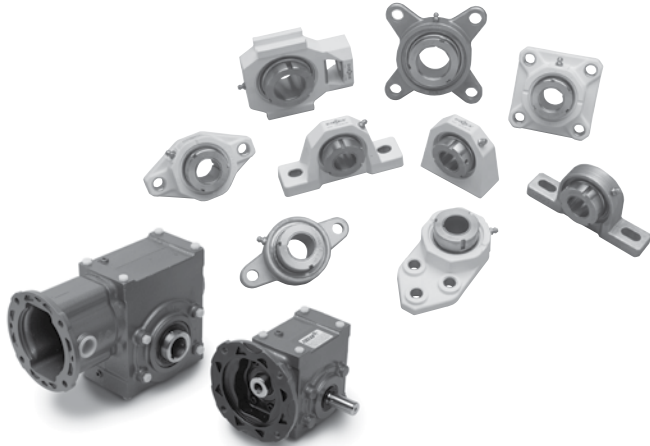
All Dodge Products

Special:

Quantis Build Center & Finished goods
 Quantis – Washdown Bearings



Washdown Products for Food and Beverage

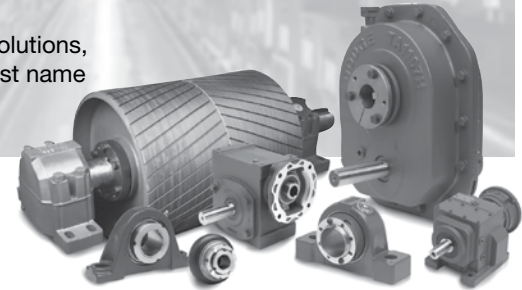


The First Name In Power Transmission... *Delivers Fast!*

Baldor•Dodge® power transmission products offer reliable service and low maintenance to help reduce your total cost of ownership. Our innovative bearings, gearing and power transmission products have solved the toughest applications for over 125 years.

Our technical sales team can help you with the most challenging applications.

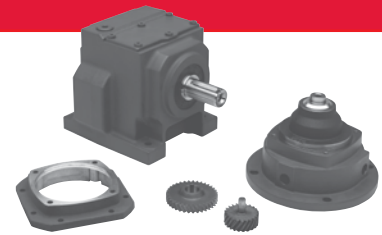
When it comes to PT solutions, Baldor•Dodge is the first name in power transmission.



Reno Quantis Build Center

ILH Reducer Specifications

- Sizes 38-88
- C-Face Clamp Collar, C-Face 3 Piece Coupled or Separate Input
- Footed or Flanged Housing
- Standard Solid Inch Output Shaft



In Line Helical Reducer (ILH) – Build Center Capabilities Guide

ILH SIZE	Housing Style	Rating Data @1750	56C 71	140TC 90	180TC 100	210TC 132	250TC 160	280TC 180
38	Footed	Max input hp	2.02hp	5.01hp	7.19hp	–	–	–
	Flanged	Ratio Range	4.77-191.75	4.77-58.30	4.77-21.67	–	–	–
48	Footed	Max input hp	2.02hp	5.01hp	10.37hp	–	–	–
	Flanged	Ratio Range	6.79-208.77	4.28-132.34	4.28-45.91	–	–	–
68	Footed	Max input hp	2.02hp	5.00hp	10.37hp	26.64hp	–	–
	Flanged	Ratio Range	14.74-281.01	5.06-248.68	3.49-80.46	3.49-30.60	–	–
88	Footed	Max input hp	2.02hp	5.00hp	10.35hp	30.17hp	45.45hp	–
	Flanged	Ratio Range	74.88-300.41	12.75-300.41	5.94-175.18	4.87-69.05	4.87-26.85	–

NOTE: Max Input Hp Rating based on lowest ratio.

RHB Specification

- Sizes 38-88
- Triple Reduction
- C-Face Clamp Collar (Standard offering), C-Face 3 Piece Coupled or Separate Input (optional)
- Footed or Flanged housing
- Outputs include Solid, Double Solid, Straight Hollow or Tapered Hollow
- Standard Nitrile Seals



Right Angle Helical Bevel Reducers (RHB) – Build Center Capabilities Guide

RHB SIZE	Housing/Shaft Style	Rating Data @1750	56C 71	140TC 90	180TC 100	210TC 132	250TC 160
38	Footed-Solid-A	Max input hp*	2.02hp	5.00hp	5.6hp	–	–
	Flanged-Tapered	Ratio Range	5.65-159.04	5.65-110.75	5.65-77.09	–	–
48	Footed-Solid-A	Max input hp*	2.02hp	5.01hp	9.90hp	–	–
	Flanged-Tapered	Ratio Range	7.22-169.53	7.22-130.78	7.22-94.12	–	–
68	Footed-Solid-A	Max input hp*	2.02	5.01	10.36hp	–	–
	Flanged-Tapered	Ratio Range	8.50-243.72	5.36-215.68	5.36-150.98	–	–
88	Footed-Solid-A	Max input hp*	2.02hp	5.01hp	10.36hp	26.94hp	–
	Flanged-Tapered	Ratio Range	25.53-302.68	8.03-302.68	5.54-215.25	5.54-156.63	–

NOTE: Max Input Hp Rating based on lowest ratio.



World Headquarters

P.O. Box 2400, Fort Smith, AR 72902-2400 U.S.A., Ph: (1) 479.646.4711, Fax (1) 479.648.5792, International Fax (1) 479.648.5895

Baldor - Dodge

6040 Ponders Court, Greenville, SC 29615-4617 U.S.A., Ph: (1) 864.297.4800, Fax: (1) 864.281.2433

www.baldor.com