

# ABB BALDOR-RELIANCE®

## SP4™ MOTORS

NEMA Premium 4 efficient motors

When it comes to electric motors, you trust in ABB. Leading the way in energy efficiency yet again, ABB Baldor-Reliance® SP4™ motors give you a shortcut in energy savings that makes a difference to your bottom line. These motors achieve NEMA Premium 4 efficiency across-the-line, independently of a drive. DOL or inverter duty, runs cooler, longer and quieter – now with a 48-month warranty.



# ABB BALDOR- RELIANCE® SP4™ MOTORS

**NEMA 4**  
PREMIUM

Revolutionizing the motor industry – again



#### Install base

There are more than 300 million industrial electric motor-driven systems in operation worldwide



#### DOL motors still run the world

Roughly 80% of the world's electric motors operate DOL (direct on line) without a drive



#### Lower energy costs

NEMA Premium 4 (comparable to IEC's IE4 efficiency) can offer up to 40% lower energy loss in comparison with a NEMA standard efficient (IE2) induction motor



#### Rising cost of energy

- Electricity prices (KWh) continue to rise in all sectors and regions, making it more expensive to operate businesses
- Higher electricity prices directly impact operational expenses and increase production costs



#### Solving the problem

- Take the best and proven AC induction motor design and make it better by reducing motor losses by an average of 20% while maintaining simplicity of AC induction motors
- Simple drop-in design



#### Cooler running operation

- Able to achieve cooler running operation for longer life
- Achieve longer bearing life
- Expanded product features that include severe duty, pumping and HVAC applications.
- Industry-leading 4-year warranty

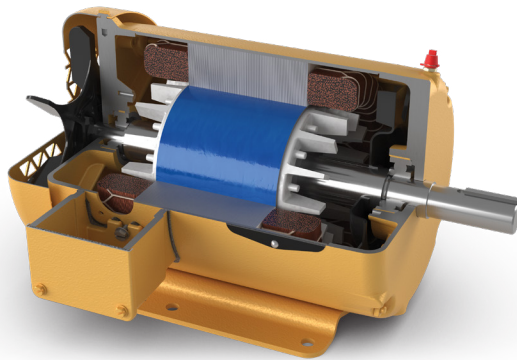


# THE MAGIC IS INSIDE THE MOTOR

## How to achieve higher efficiency

### The idea is simple.

Take the best and proven AC induction design and make it better by reducing motor losses by an average of 20% while maintaining the simplicity of today's installed base of AC induction motors.



**ABB Baldor-Reliance Super-E®**  
NEMA Premium Efficient (IE3)

AC induction motor

- Slip losses in rotor ( $I^2R$ )
- Heats bearings and motor
- Lower efficiency adds to heat generated

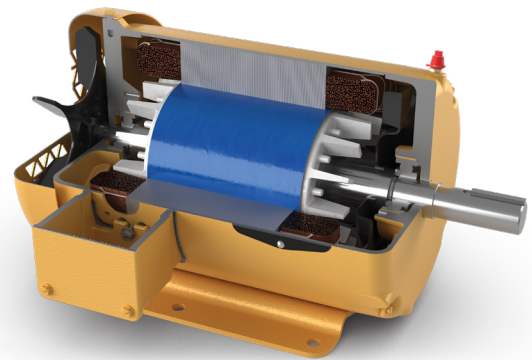
Higher rotor and stator losses



$I^2R$  rotor

Other

$I^2R$  stator



**ABB Baldor-Reliance SP4**  
NEMA Premium 4 Efficient (IE4)

AC induction motor

- Longer stack (both stator and rotor) – less loss
- Runs cooler – less loss in bearing and motor
- Higher efficiency

Lower rotor and stator losses



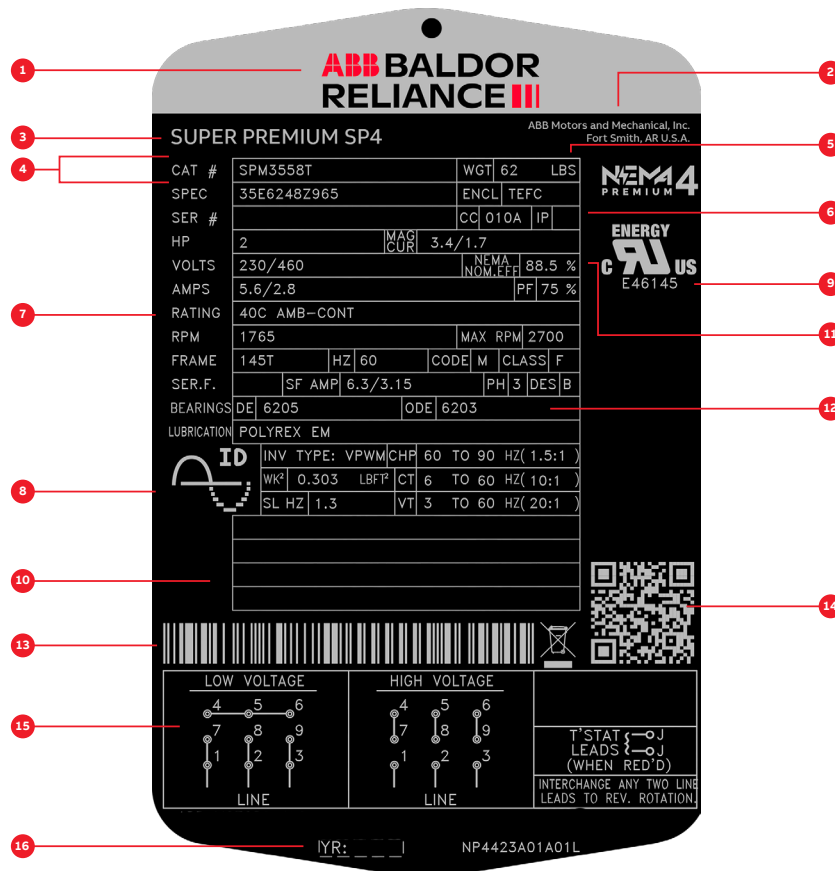
$I^2R$  rotor

Other

$I^2R$  stator

# ABB BALDOR-RELIANCE SP4 MOTOR NAMEPLATES

New and improved



1 - ABB Baldor-Reliance logo

2 - Manufacturing location

3 - NEMA Super Premium

4 - Catalog & spec number

5 - Product weight

6 - IP protection class

7 - Rating data - Voltage, frequency, output, speed, current, power factor, duty cycle

8 - Inverter duty data

9 - Agency mark for fulfilling regulations

10 - Blank lines for customer information

11 - Efficiency

12 - Bearing information

13 - Bar code for serial number information

14 - QR code to product landing page

15 - Connection diagram

16 - Manufacturing year

# GENERAL PURPOSE

Three phase, totally enclosed,  
230/460V

1/4 - 20 Hp



## Features

- 60 Hz designs
- 2,4,6 pole
- 1-20 Hp ratings
- Suitable for inverter use per NEMA MG1 Part 31.4.4.2 \*
- Designed for longevity with a 4 year warranty on SP4 motors
- Cooler operation for longer lifespan

## Applications

- Fans
- Pumps
- Blowers
- Conveyors
- Compressors
- Industrial machines
- Other general purpose applications

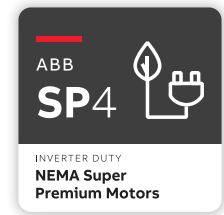
Hp	RPM	NEMA frame	Enclosure	Catalog number	List price	Disc. sym.	"C" dim.	Aprx. Wt. (lb)	Full load efficiency	Full load amps	Notes
1/4	1800	48	TEFC	<b>SPM3454</b>	558	GE4	10.72	24	74.0	0.40	1,2
		48	TENV	<b>SPNM3454</b>	585	GE4	9.63	24	74.0	0.40	1,2
	1200	48	TEFC	<b>SPM3455</b>	877	GE4	10.72	27	74.0	0.65	1,2
		48	TENV	<b>SPNM3455</b>	808	GE4	10.25	27	74.0	0.65	1,2
1/3	3600	56	TEFC	<b>SPM3531</b>	869	GE4	12.84	27	74.0	0.65	1,2
		48	TENV	<b>SPM3457</b>	567	GE4	9.63	24	74.0	0.50	1,2
	1800	48	TEFC	<b>SPM3458</b>	680	GE4	10.72	24	77.0	0.52	1,2
		56	TEFC	<b>SPM3534</b>	610	GE4	12.84	24	77.0	0.52	1,2
	1200	56	TENV	<b>SPNM3534</b>	655	GE4	11.76	24	77.0	0.52	1,2
		56	TEFC	<b>SPM3535</b>	977	GE4	12.84	27	75.5	0.70	1,2
	3600	48	TEFC	<b>SPM3460</b>	657	GE4	10.72	27	77.0	0.80	1,2
		56	TEFC	<b>SPM3537</b>	657	GE4	12.84	27	77.0	0.80	1,2
1/2	1800	48	TEFC	<b>SPM3461</b>	797	GE4	10.72	27	81.5	0.75	1,2
		56	TEFC	<b>SPM3538</b>	1,052	GE4	12.84	27	81.5	0.75	1,2
	1200	56	TENV	<b>SPNM3538</b>	760	GE4	11.76	27	81.5	0.75	1,2
		56	TEFC	<b>SPM3539</b>	1,052	GE4	13.72	42	78.5	1.00	1,2
3/4	3600	56	TENV	<b>SPNM3539</b>	1,155	GE4	12.64	42	78.5	1.00	1,2
		48	TEFC	<b>SPM3463</b>	724	GE4	11.34	30	80.0	1.00	1,2
	1800	56	TEFC	<b>SPM3541</b>	724	GE4	12.84	30	80.0	1.00	1,2
		48	TEFC	<b>SPM3464</b>	861	GE4	13.10	44	84.0	0.95	1,2
	1200	56	TEFC	<b>SPM3464</b>	747	GE4	13.72	45	84.0	0.95	1,2
		56	TENV	<b>SPNM3543</b>	816	GE4	12.63	42	84.0	0.95	1,2
143T	56	TEFC	<b>SPM3543</b>	1,074	GE4	12.91	41	82.5	1.40	1,2	
		143T	TEFC	<b>SPM3543T</b>	1,074	GE4	13.29	41	82.5	1.40	1,2

### Notes:

1) Class F insulated motor with 1.15 service factor or higher that operates within Class "B" temperature limits at rated horsepower.

2) Usable at 208 volts

\* 48 frame Inverter Duty only available on low voltage input

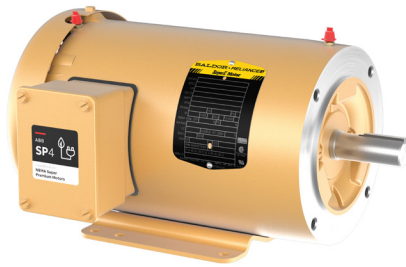


## Foot mounted continued

Hp	RPM	NEMA frame	Enclosure	Catalog number	List price	Disc. sym.	"C" dim.	Aprx. Wt. (lb)	Full load efficiency	Full load amps	Notes
1	3600	56	TEFC	SPM3545	1,151	GE4	12.91	35	82.5	1.30	1,2
		56	TEFC	SPM3546	1,176	GE4	12.91	37	85.5	1.60	1,2
	1800	56	TENV	SPNM3546	1,324	GE4	11.74	37	85.5	1.67	1,2
		143T	TEFC	SPM3546T	1,176	GE4	12.29	37	85.5	1.60	1,2
	1200	143T	TENV	SPNM3546T	1,324	GE4	12.12	37	85.5	1.67	1,2
		56	TEFC	SPM3556	1,518	GE4	13.78	47	84.0	1.66	1,2
1-1/2	3600	145T	TEFC	SPM3556T	1,518	GE4	14.19	47	84.0	1.66	1,2
		56	TEFC	SPM3550	1,303	GE4	12.91	38	85.5	2.05	1,2
	1800	143T	TEFC	SPM3550T	1,303	GE4	12.29	38	85.5	2.05	1,2
		56	TEFC	SPM3554	1,307	GE4	12.91	45	87.5	2.25	1,2
	1200	145T	TEFC	SPM3554T	1,307	GE4	13.29	44	87.5	2.25	1,2
		145T	TENV	SPNM3554T	1,472	GE4	13.00	48	87.5	2.30	1,2
2	3600	182T	TEFC	SPM3607T	1,776	GE4	18.04	90	88.5	2.50	1,2
		56	TEFC	SPM3555	1,427	GE4	13.78	50	86.5	2.40	1,2
	1800	145T	TEFC	SPM3555T	1,427	GE4	14.19	50	86.5	2.40	1,2
		145T	TEFC	SPM3558T	1,382	GE4	15.56	62	88.5	2.80	1,2
	1200	184T	TEFC	SPM3614T	1,862	GE4	18.48	100	89.5	3.30	1,2
		145T	TEFC	SPM3559T	1,563	GE4	16.55	81	88.5	3.40	1,2
3	3600	182T	TEFC	SPM3610T	1,583	GE4	16.55	81	88.5	3.40	1,2
		1800	182T	TEFC	SPM3611T	1,418	GE4	18.04	93	91.0	4.20
	1200	213T	TEFC	SPM3704T	2,421	GE4	19.02	127	90.2	4.50	1,2
		3600	184T	TEFC	SPM3613T	1,755	GE4	18.04	94	89.5	5.50
5	1800	184T	TEFC	SPM3615T	1,465	GE4	18.04	100	91.0	6.60	1,2
		1200	215T	TEFC	SPM3708T	2,736	GE4	20.52	149	90.2	7.40
	3600	213T	TEFC	SPM3709T	2,629	GE4	17.89	121	90.2	9.00	1,2
7-1/2	1800	213T	TEFC	SPM3710T	2,112	GE4	20.52	165	92.4	9.90	1,2
		3600	215T	TEFC	SPM3711T	2,665	GE4	20.52	187	91.7	10.30
10	1800	215T	TEFC	SPM3714T	2,385	GE4	20.52	187	92.4	12.60	1,2
		3600	215T	TEFC	SPM3713T	3,761	GE4	20.52	187	92.4	17.00
15	1800	254T	TEFC	SPM3910T	4,150	GE4	24.56	205	93.6	18.30	1,2
		20	1800	256T	TEFC	SPM3914T	4,950	GE4	27.57	275	94.1

## Notes:

- 1) Class F insulated motor with 1.15 service factor or higher that operates within Class "B" temperature limits at rated horsepower.
- 2) Usable at 208 volts

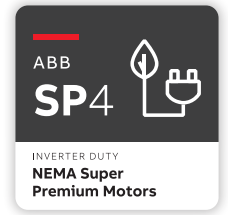
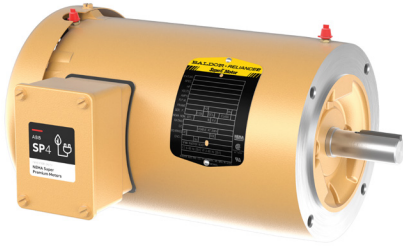


### C face, foot mounted

Hp	RPM	NEMA frame	Enclosure	Catalog number	List price	Disc. sym.	"C" dim.	Aprx. Wt. (lb)	Full load efficiency	Full load amps	Notes	
1/3	1800	56	TEFC	<b>CSPM3554</b>	651	GE4	12.84	24	77.0	0.52	1, 3, 8	
	3600	56	TEFC	<b>CSPM3537</b>	699	GE4	12.84	27	77.0	0.80	1, 3, 8	
1/2	1800	56	TEFC	<b>CSPM3538</b>	662	GE4	12.84	27	81.5	0.75	1, 3, 8	
		56	TENV	<b>CSPNM3538</b>	946	GE4	11.76	27	81.5	0.75	1, 3, 8	
	1200	56	TEFC	<b>CSPM3539</b>	1,095	GE4	13.72	42	78.5	1.00	1, 3, 8	
		56	TENV	<b>CSPNM3539</b>	1,172	GE4	12.64	42	78.5	1.00	1, 3, 8	
3/4	3600	56	TEFC	<b>CSPM3541</b>	765	GE4	12.84	30	80.0	1.00	1, 3, 8	
		56	TEFC	<b>CSPM3542</b>	788	GE4	13.72	45	84.0	0.95	1, 3, 8	
	1800	56	TENV	<b>CSPNM3542</b>	859	GE4	12.63	42	84.0	0.95	1, 2	
		56	TEFC	<b>CSPM3543</b>	1,117	GE4	12.91	41	82.5	1.40	1, 2	
1	3600	56	TEFC	<b>CSPM3545</b>	1,197	GE4	12.91	35	82.5	1.30	1, 2	
		56	TEFC	<b>CSPM3546</b>	1,358	GE4	12.91	37	85.5	1.60	1, 2	
	1800	56	TENV	<b>CSPNM3546</b>	1,370	GE4	11.74	37	85.5	1.67	1, 2	
		143T	TEFC	<b>CSPM3546T</b>	1,232	GE4	12.29	37	85.5	1.60	1, 2	
1 1/2	1200	56	TEFC	<b>CSPM3556</b>	1,564	GE4	13.78	47	84.0	1.66	1, 2	
		145T	TEFC	<b>CSPM3556T</b>	1,581	GE4	14.19	47	84.0	1.66	1, 2	
	3600	56	TEFC	<b>CSPM3550</b>	1,350	GE4	12.91	38	85.5	2.05	1, 2	
		143T	TEFC	<b>CSPM4550T</b>	1,366	GE4	12.29	38	85.5	2.05	1, 2	
2	1800	145T	TEFC	<b>CSPM3554T</b>	1,363	GE4	13.29	44	87.5	2.25	1, 2	
		184T	TEFC	<b>CSPM3607T</b>	1,894	GE4	18.04	90	88.5	2.50	1, 2	
	1200	56	TEFC	<b>CSPM3555</b>	1,473	GE4	13.78	50	86.5	2.40	1, 2	
		145T	TEFC	<b>CSPM3555T</b>	1,490	GE4	14.19	62	86.5	2.40	1, 2	
3	1800	145T	TEFC	<b>CSPM3558T</b>	1,438	GE4	15.56	62	88.5	2.80	1, 2	
		184T	TEFC	<b>CSPM3614T</b>	1,980	GE4	18.48	100	89.5	3.30	1, 2	
	1200	3600	182T	TEFC	<b>CSPM3610T</b>	1,702	GE4	16.55	81	88.5	3.40	1, 2
		1800	182T	TEFC	<b>CSPM3704T</b>	1,523	GE4	18.04	93	91.0	4.20	1, 2
5	1200	1800	215T	TEFC	<b>CSPM3708T</b>	2,650	GE4	19.02	127	90.2	4.50	1, 2
		184T	TEFC	<b>CSPM3613T</b>	1,874	GE4	16.55	94	89.5	5.50	1, 2	
	3600	1800	184T	TEFC	<b>CSPM3615T</b>	1,570	GE4	18.04	100	91.0	6.60	1, 2
		1200	215T	TEFC	<b>CSPM3708T</b>	2,964	GE4	19.02	149	90.2	7.40	1, 2
7 1/2	3600	213T	TEFC	<b>CSPM3709T</b>	2,874	GE4	17.89	121	90.2	9.00	1, 2	
	1800	213T	TEFC	<b>CSPM3710T</b>	2,316	GE4	20.52	165	92.4	9.90	1, 2	
10	3600	215T	TEFC	<b>CSPM3711T</b>	2,894	GE4	20.52	187	91.7	103.00	1, 2	
	1800	215T	TEFC	<b>CSPM3714T</b>	2,588	GE4	20.52	187	92.4	12.60	1, 2	
15	3600	215T	TEFC	<b>CSPM3713T</b>	3,990	GE4	20.52	187	92.4	17.00	1, 2	

#### Notes:

- 1) Class F insulated motor with 1.15 service factor or higher that operates within Class "B" temperature limits at rated horsepower.
- 2) Usable at 208 volts



### C face, footless

Hp	RPM	NEMA frame	Enclosure	Catalog number	List price	Disc. sym.	"C" dim.	Aprx. Wt. (lb)	Full load efficiency	Full load amps	Notes
1/4	1200	56	TEFC	<b>VSPM3531</b>	900	GE4	12.84	27	74.0	0.65	1,3
1/3	1800	56	TEFC	<b>VSPM3534</b>	636	GE4	12.84	24	77.0	0.52	1,3
	1200	56	TEFC	<b>VSPM3535</b>	1,011	GE4	12.84	27	75.5	0.70	1,3
1/2	3600	56	TEFC	<b>VSPM3537</b>	690	GE4	12.84	27	77.0	0.80	1,3
		56	TEFC	<b>VSPM3538</b>	649	GE4	12.84	27	81.5	0.75	1,3
	1800	56	TENV	<b>VSPNM3538</b>	794	GE4	11.76	27	81.5	0.75	1,3
	1200	56	TEFC	<b>VSPM3539</b>	1,085	GE4	13.72	42	78.5	1.00	1,3
2/3	3600	56	TEFC	<b>VSPM3541</b>	755	GE4	12.84	30	80.0	1.00	1,3
		56	TEFC	<b>VSPM3542</b>	773	GE4	13.72	45	84.0	0.95	1,3
	1800	56	TENV	<b>VSPNM3542</b>	816	GE4	12.63	42	84.0	0.95	1,3
	1200	56	TEFC	<b>VSPM3543</b>	1,110	GE4	12.91	41	82.5	1.40	1,2
1	3600	143T	TEFC	<b>VSPM3543T</b>	1,110	GE4	13.29	41	82.5	1.40	1,2
		56	TEFC	<b>VSPM3545</b>	1,197	GE4	12.91	35	82.5	1.30	1,2
		56	TEFC	<b>VSPM3546</b>	1,217	GE4	12.91	37	85.5	1.60	1,2
	1800	56	TENV	<b>VSPNM3546</b>	1,370	GE4	11.74	37	85.5	1.66	1,2
		143T	TEFC	<b>VSPM3546T</b>	1,232	GE4	12.29	37	85.5	1.60	1,2
		143T	TENV	<b>VSPNM3546T</b>	1,387	GE4	12.12	37	85.5	1.67	1,2
1-1/2	1200	56	TEFC	<b>VSPM3556</b>	1,564	GE4	13.78	47	84.0	1.66	1,2
		145T	TEFC	<b>VSPM3556T</b>	1,581	GE4	14.19	47	84.0	1.66	1,2
	3600	56	TEFC	<b>VSPM3550</b>	1,350	GE4	12.91	38	85.5	2.05	1,2
		143T	TEFC	<b>VSPM3550T</b>	1,366	GE4	12.29	38	85.5	2.05	1,2
2	1800	56	TEFC	<b>VSPM3554</b>	1,348	GE4	12.91	45	87.5	2.25	1,2
		145T	TEFC	<b>VSPM3554T</b>	1,363	GE4	13,29	44	87.5	2.25	1,2
	3600	56	TEFC	<b>VSPM3555</b>	1,473	GE4	13.78	50	86.5	2.40	1,2
		145T	TEFC	<b>VSPM3555T</b>	1,490	GE4	14.19	50	86.5	2.40	1,2
3	1800	145T	TEFC	<b>VSPM3558</b>	1,438	GE4	15.56	62	88.5	2.80	1,2
	1200	184T	TEFC	<b>VSPM3614T</b>	1,980	GE4	18.48	100	89.5	6.60	1,2
	3600	182T	TEFC	<b>VSPM3610T</b>	1,702	GE4	16.55	81	88.5	3.40	1,2
	1800	182T	TEFC	<b>VSPM3611T</b>	1,523	GE4	18.04	93	91.0	4.20	1,2
5	1200	213T	TEFC	<b>VSPM3704T</b>	2,650	GE4	19.02	127	90.2	4.50	1,2
	3600	182T	TEFC	<b>VSPM3613T</b>	1,874	GE4	18.04	94	89.5	5.50	1,2
	1800	184T	TEFC	<b>VSPM3615T</b>	1,570	GE4	18.04	100	91.0	6.60	1,2
	1200	215T	TEFC	<b>VSPM3708T</b>	2,964	GE4	20.52	149	90.2	7.40	1,2
7 1/2	3600	213T	TEFC	<b>VSPM3709T</b>	2,858	GE4	17.89	121	90.2	9.00	1,2
	1800	213T	TEFC	<b>VSPM3710T</b>	2,586	GE4	20.52	165	92.4	10.30	1,2
10	3600	215T	TEFC	<b>VSPM3711T</b>	2,894	GE4	20.52	187	91.7	10.30	1,2
	1800	215T	TEFC	<b>VSPM3714T</b>	2,891	GE4	20.52	187	92.4	12.60	1,2
15	3600	215T	TEFC	<b>VSPM3713T</b>	3,990	GE4	20.52	187	92.4	17.00	1,2

#### Notes:

- 1) Class F insulated motor with 1.15 service factor or higher that operates within Class "B" temperature limits at rated horsepower.
- 2) Usable at 208 volts
- 3) Motor not suitable for inverter use

# GENERAL PURPOSE

## Three phase, open, 230/460V

### 1/4 - 20 Hp



#### Features

- 60 Hz designs
- 2,4,6 pole
- 1-20 Hp ratings
- Suitable for inverter use per NEMA MG1 Part 31.4.4.2 \*
- Designed for longevity with a 4 year warranty on SP4 motors
- Cooler operation for longer lifespan

#### Applications

- Fans
- Pumps
- Blowers
- Conveyors
- Compressors
- Industrial machines
- Other general purpose applications

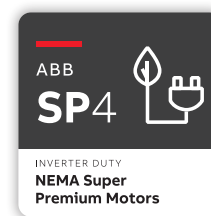
Hp	RPM	NEMA frame	Catalog number	List price	Disc. sym.	"C" dim.	Aprx. Wt. (lb)	Full load efficiency	Full load amps	Notes	
1/4	1800	48	<a href="#">SPM30003</a>	766	GO4	9.62	24	74.0	0.40	1,2	
	1200	48	<a href="#">SPM30004</a>	847	GO4	9.75	27	74.0	0.65	1,2	
		56	<a href="#">SPM31101</a>	847	GO4	11.75	27	74.0	0.65	1,2	
1/3	3600	48	<a href="#">SPM30006</a>	804	GO4	9.62	24	74.0	0.40	1,2	
		48	<a href="#">SPM30007</a>	810	GO4	9.13	24	77.0	0.52	1,2	
	1800	56	<a href="#">SPM31104</a>	810	GO4	11.75	24	77.0	0.52	1,2	
		48	<a href="#">SPM30008</a>	886	GO4	9.75	27	75.5	0.70	1,2	
	1/2	1200	56	<a href="#">SPM31105</a>	886	GO4	11.75	27	75.5	0.70	1,2
			48	<a href="#">SPM30009</a>	865	GO4	10.25	27	77.0	0.80	1,2
3600		56	<a href="#">SPM31107</a>	865	GO4	11.75	27	77.0	0.80	1,2	
		48	<a href="#">SPM30010</a>	892	GO4	10.25	27	81.5	0.75	1,2	
3/4	1800	56	<a href="#">SPM31108</a>	892	GO4	11.75	27	81.5	0.75	1,2	
		48	<a href="#">SPM30011</a>	974	GO4	11.51	42	78.5	1.00	1,2	
	1200	56	<a href="#">SPM31109</a>	974	GO4	12.63	42	78.5	1.00	1,2	
		48	<a href="#">SPM30012</a>	861	GO4	10.63	30	80.0	1.00	1,2	
	1	3600	56	<a href="#">SPM31111</a>	861	GO4	11.75	30	80.0	1.00	1,2
			56	<a href="#">SPM31112</a>	982	GO4	12.63	46	84.0	0.95	1,2
1800		56	<a href="#">SPM31153</a>	1,199	GO4	11.75	41	82.5	1.40	1,2	
		143T	<a href="#">SPM3153T</a>	1,052	GO4	12.13	41	82.5	1.40	1,2	
1	3600	56	<a href="#">SPM31115</a>	883	GO4	11.75	35	82.5	1.30	1,2	
		56	<a href="#">SPM31116</a>	1,033	GO4	11.75	37	85.5	1.63	1,2	
	1800	143T	<a href="#">SPM3116T</a>	1,133	GO4	11.12	37	85.5	1.20	1,2	
		56H	<a href="#">SPM31156</a>	1,511	GO4	12.63	47	84.0	1.66	1,2	
	1200	145T	<a href="#">SPM3156T</a>	1,305	GO4	13.00	47	84.0	1.66	1,2	

#### Notes:

1) Class F insulated motor with 1.15 service factor or higher that operates within Class "B" temperature limits at rated horsepower.

2) Usable at 208 volts

\* 48 frame Inverter Duty only available on low voltage input



## Foot mounted continued

Hp	RPM	NEMA frame	Catalog number	List price	Disc. sym.	"C" dim.	Aprx. Wt. (lb)	Full load efficiency	Full load amps	Notes
1-1/2	3600	56	SPM31120	912	GO4	11.75	38	85.5	2.05	1,2
		143T	SPM3120T	1,099	GO4	11.12	38	85.5	2.05	1,2
	1800	56	SPM31154	1,133	GO4	11.75	45	87.5	2.25	1,2
		145T	SPM3154T	1,185	GO4	12.13	45	87.5	2.25	1,2
	1200	56H	SPM31159	1,454	GO4	16.49	90	88.5	2.50	1,2
		182T	SPM3207T	1,527	GO4	17.99	90	88.5	2.50	1,2
2	3600	56	SPM31155	1,027	GO4	11.75	43	86.5	2.50	1,2
		143T	SPM3155T	1,288	GO4	11.62	43	86.5	2.50	1,2
	1800	56H	SPM31157	1,188	GO4	14.00	56	88.5	2.70	1,2
		145T	SPM3157T	1,269	GO4	14.38	56	88.5	2.70	1,2
3	3600	184T	SPM3215T	1,562	GO4	18.43	100	89.5	3.30	1,2
		56H	SPM31158	1,151	GO4	14	64	88.5	3.45	1,2
	1800	145T	SPM3158T	1,305	GO4	14.38	64	88.5	3.45	1,2
		182T	SPM3211T	1,368	GO4	17.99	92	91.0	4.00	1,2
5	1200	213T	SPM3305T	1,987	GO4	17.45	127	90.2	4.50	1,2
		3600	182T	SPM3212T	1,425	GO4	16.49	81	91.0	5.60
	1800	184T	SPM3218T	1,499	GO4	18.43	100	91.0	6.60	1,2
		215T	SPM3309T	2,604	GO4	17.45	141	90.2	7.30	1,2
7-1/2	3600	184T	SPM3219T	2,260	GO4	17.99	36	90.2	8.40	1,2
		1800	213T	SPM3311T	2,201	GO4	18.20	158	92.4	9.500
	1200	254T	SPM2506T	3,122	GO4	23.19	248	91.7	11.00	1,2
		3600	213T	SPM3312T	2,584	GO4	17.45	130	91.7	11.50
10	1800	215T	SPM3313T	2,664	GO4	18.20	158	92.4	12.10	1,2
		1200	256T	SPM2511T	4,061	GO4	24.21	288	92.4	14.50
	3600	215T	SPM3314T	3,670	GO4	18.95	187	92.4	17.00	1,2
		1800	254T	SPM2513T	3,771	GO4	24.21	290	93.6	18.30
20	3600	254T	SPM2514T	4,311	GO4	21.69	242	92.4	23.00	1,2
		1800	256T	SPM2515T	4,661	GO4	25.21	436	94.1	24.00

## Notes:

- 1) Class F insulated motor with 1.15 service factor or higher that operates within Class "B" temperature limits at rated horsepower.
- 2) Usable at 208 volts

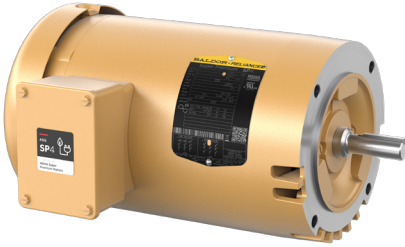


### C face, foot mount

Hp	RPM	NEMA Frame	Catalog Number	List Price	Disc. sym.	"C" dim.	Aprx. Wt. (lb)	Full load efficiency	Full load amps	Notes
1/3	1800	56	<b>CSPM31104</b>	856	GO4	11.75	24	77.0	0.5	3
1/2	3600	56	<b>CSPM31107</b>	911	GO4	11.75	27	77.0	0.8	3
	1800	56	<b>CSPM31108</b>	939	GO4	11.75	27	81.5	0.8	3
3/4	1800	56	<b>CSPM31112</b>	1,028	GO4	12.63	46	84.0	1.0	2
1	3600	56	<b>CSPM31115</b>	1,091	GO4	11.75	35	82.5	1.3	2
	1800	143T	<b>CSPM3116T</b>	1,327	GO4	11.12	37	85.5	1.2	2
	1200	145T	<b>CSPM3156T</b>	1,368	GO4	13.00	47	84.0	1.7	2
1 1/2	3600	143T	<b>CSPM3120T</b>	1,161	GO4	11.12	38	85.5	2.1	2
	1800	145T	<b>CSPM3154T</b>	1,384	GO4	12.13	45	87.5	2.3	2
	1200	182T	<b>CSPM3207T</b>	1,646	GO4	17.99	90	88.5	2.5	2
2	3600	56	<b>CSPM31155</b>	1,238	GO4	11.75	43	86.5	2.5	2
	1800	145T	<b>CSPM3157T</b>	1,478	GO4	14.38	56	88.5	2.7	2
	1200	184T	<b>CSPM3215T</b>	1,680	GO4	18.43	100	89.5	3.3	2
3	3600	145T	<b>CSPM3158T</b>	1,368	GO4	14.38	64	88.5	3.5	2
	1800	182T	<b>CSPM3211T</b>	1,644	GO4	17.99	92	91.0	4.0	2
	1200	213T	<b>CSPM3305T</b>	2,254	GO4	17.45	127	90.2	4.5	2
5	3600	182T	<b>CSPM3212T</b>	1,544	GO4	16.49	81	91.0	5.6	2
	1800	184T	<b>CSPM3218T</b>	1,790	GO4	18.43	100	91.0	6.6	2
	1200	215T	<b>CSPM3309T</b>	2,871	GO4	17.45	141	90.2	7.3	2
7 1/2	3600	184T	<b>CSPM3219T</b>	2,379	GO4	17.99	36	90.2	8.4	2
	1800	213T	<b>CSPM3311T</b>	2,723	GO4	18.20	158	92.4	9.5	2
	1200	254T	<b>CSPM2506T</b>	3,657	GO4	23.19	248	91.7	11.0	2
10	3600	213T	<b>CSPM3312T</b>	2,851	GO4	17.45	130	91.7	11.5	2
	1800	215T	<b>CSPM3313T</b>	3,240	GO4	18.20	158	92.4	12.1	2
	1200	256T	<b>CSPM2511T</b>	4,597	GO4	24.21	288	92.4	14.5	2
15	3600	215T	<b>CSPM3314T</b>	3,937	GO4	18.95	187	92.4	17.0	2
	1800	254T	<b>CSPM2513T</b>	4,744	GO4	24.21	290	93.6	18.3	2
20	3600	254T	<b>CSPM2514T</b>	4,846	GO4	21.69	242	92.4	23.0	2
	1800	256T	<b>CSPM2515T</b>	5,197	GO4	25.21	436	94.1	24.0	2

#### Notes:

- 1) Class F insulated motor with 1.15 service factor or higher that operates within Class "B" temperature limits at rated horsepower.
- 2) Usable at 208 volts
- 3) Motor not usable for inverter use



### C face, footless

Hp	RPM	NEMA Frame	Catalog Number	List Price	Disc. sym.	"C" dim.	Aprx. Wt. (lb)	Full load efficiency	Full load amps	Notes
1/3	1800	56	VSPM31104	856	GO4	11.75	24	77.0	0.5	3
	3600	56	VSPM31107	911	GO4	11.75	27	77.0	0.8	3
1/2	1800	56	VSPM31108	939	GO4	11.75	27	81.5	0.8	3
	1200	56	VSPM31109	1,020	GO4	12.63	42	78.5	1.0	3
3/4	3600	56	VSPM31111	908	GO4	11.75	30	80.0	1.0	3
	1800	56	VSPM31112	1,028	GO4	12.63	46	84.0	1.0	2
	1200	56	VSPM31153	1,245	GO4	11.75	41	82.5	1.4	2
1		143T	VSPM3153T	1,085	GO4	12.13	41	82.5	1.4	2
	3600	56	VSPM31115	929	GO4	11.75	35	82.5	1.3	2
	1800	56	VSPM31116	1,080	GO4	11.75	37	85.5	1.6	2
1 1/2		143T	VSPM3116T	1,327	GO4	11.12	37	85.5	1.2	2
	1200	145T	VSPM3156T	1,368	GO4	13.00	47	84.0	1.7	2
	3600	56	VSPM31120	958	GO4	11.75	38	85.5	2.1	2
2		143T	VSPM3120T	1,161	GO4	11.12	38	85.5	2.1	2
	1800	56	VSPM31154	1,179	GO4	11.75	45	87.5	2.3	2
		145T	VSPM3154T	1,384	GO4	12.13	45	87.5	2.3	2
3	3600	56	VSPM31155	1,238	GO4	11.75	43	86.5	2.5	2
		143T	VSPM3155T	1,351	GO4	11.62	43	86.5	2.5	2
	1800	56H	VSPM31157	1,234	GO4	14.00	56	88.5	2.7	2
5		145T	VSPM3157T	1,325	GO4	14.38	56	88.5	2.7	2
	1200	184T	VSPM3215T	1,680	GO4	18.43	100	89.5	3.3	2
	3600	56H	VSPM31158	1,197	GO4	14.00	64	88.5	3.5	2
7 1/2		145T	VSPM3158T	1,368	GO4	14.38	64	88.5	3.5	2
	1800	182T	VSPM3211T	1,644	GO4	17.99	92	91.0	4.0	2
	1200	213T	VSPM3305T	2,254	GO4	17.45	127	90.2	4.5	2
10	3600	182T	VSPM3212T	1,544	GO4	16.49	81	91.0	5.6	2
	1800	184T	VSPM3218T	1,790	GO4	18.43	100	91.0	6.6	2
	1200	215T	VSPM3309T	2,871	GO4	17.45	141	90.2	7.3	2
15	3600	184T	VSPM3219T	2,379	GO4	17.99	36	90.2	8.4	2
	1800	213T	VSPM3311T	2,723	GO4	18.20	158	92.4	9.5	2
20	3600	213T	VSPM3312T	2,851	GO4	17.45	130	91.7	11.5	2
	1800	215T	VSPM3313T	3,240	GO4	18.20	158	92.4	12.1	2
25	3600	215T	VSPM3314T	3,937	GO4	18.95	187	92.4	17.0	2
	1800	254T	VSPM2513T	4,744	GO4	24.21	290	93.6	18.3	2
30	3600	254T	VSPM2514T	4,846	GO4	21.69	242	92.4	23.0	2
	1800	256T	VSPM2515T	5,197	GO4	25.21	436	94.1	24.0	2

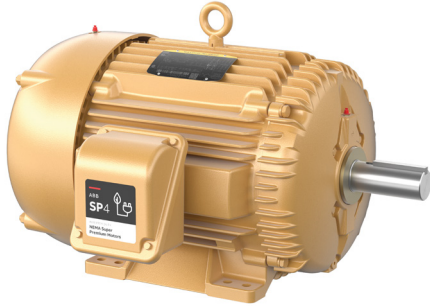
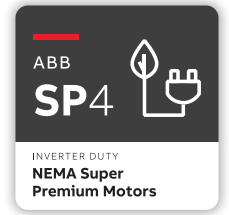
#### Notes:

- 1) Class F insulated motor with 1.15 service factor or higher that operates within Class "B" temperature limits at rated horsepower.
- 2) Usable at 208 volts
- 3) Motor not usable for inverter use

# SEVERE DUTY

## Three phase, totally enclosed

### 25 - 300 Hp



#### Features

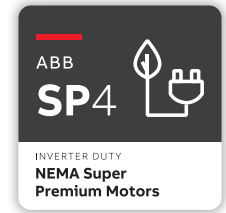
- Robust cast iron TEFC construction
- IP55 ingress protection
- Regreasable bearings all frames
- 304 stainless steel nameplates
- Suitable for inverter use per NEMA MG1 Part 31.4.4.2
- Class I, Div 2 Groups A, B, C & D
- Class II, Div 2 Groups F & G
- NEMA Design B torques at Design A inrush
- Designed for longevity with a 4 year warranty on SP4 motors

#### Applications

- Grain handling
- Chemical, oil & gas
- Pulp & paper, forest products
- Metals & foundries
- Cement, aggregate & above ground mining
- Food processing
- Power generation
- Water & wastewater treatment

Hp	RPM	NEMA frame	Catalog number	List price	Disc. sym.	"C" dim.	Aprx. Wt. (lb)	Full load efficiency	Voltage	Full load amps
25	3600	284TS	<b>SPM4107TS</b>	7,017	SD4	26.75	396	93.0	230/460	28
	1800	284T	<b>SPM4103T</b>	6,600	SD4	28.00	490	94.5	230/460	29
	1200	324T	<b>SPM4111T</b>	10,355	SD4	30.71	680	94.1	230/460	31
30	3600	286TS	<b>SPM4108TS</b>	8,554	SD4	26.63	445	93.0	230/460	33
	1800	286T	<b>SPM4104T</b>	7,836	SD4	27.93	475	94.5	230/460	35
	1200	326T	<b>SPM4117T</b>	13,348	SD4	30.71	675	94.1	230/460	39
40	3600	324TS	<b>SPM4109TS</b>	11,751	SD4	29.13	451	93.6	230/460	45
	1800	324T	<b>SPM4110T</b>	10,253	SD4	30.71	720	95.0	230/460	46
	1200	364T	<b>SPM4308T</b>	16,314	SD4	33.48	990	95.0	230/460	45
50	3600	326TS	<b>SPM4114TS</b>	12,315	SD4	29.21	587	94.1	230/460	56
	1800	326T	<b>SPM4115T</b>	12,034	SD4	30.71	720	95.4	230/460	60
		326TS	<b>SPM4115TS</b>	12,034	SD4	29.21	720	95.4	230/460	60
	1200	365T	<b>SPM4312T</b>	19,317	SD4	33.48	928	95.0	230/460	55.1
60	3600	364TS	<b>SPM4310TS</b>	17,372	SD4	31.35	929	94.5	230/460	65.4
	1800	364T	<b>SPM4314T</b>	17,179	SD4	33.49	965	95.4	230/460	70
		364TS	<b>SPM4314TS</b>	17,179	SD4	31.35	933	95.4	230/460	70
	1200	404T	<b>SPM4403T</b>	24,206	SD4	38.19	1,281	95.4	230/460	72.4
75	3600	365TS	<b>SPM4313TS</b>	19,900	SD4	31.35	1,005	95.0	230/460	80.7
	1800	365T	<b>SPM4316T</b>	19,766	SD4	33.48	958	95.8	230/460	88
		365TS	<b>SPM4316TS</b>	19,766	SD4	31.35	958	95.8	230/460	88
	1200	405T	<b>SPM4404T</b>	29,458	SD4	38.2	1,275	95.4	230/460	90.8

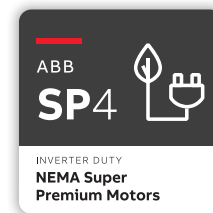
Cast iron frame



## Foot mounted continued

Hp	RPM	NEMA frame	Catalog number	List price	Disc. sym.	"C" dim.	Aprx. Wt. (lb)	Full load efficiency	Voltage	Full load amps
100	3600	405TS	SPM4402TS-4	25,111	SD4	35.19	1,272	96.2	460	113
		405T	SPM4400T-4	24,738	SD4	38.19	1,296	96.2	460	115
	1800	405TS	SPM4400TS-4	24,738	SD4	35.19	1,304	96.2	460	115
		444T	SPM4409T-4	32,401	SD4	44.96	1,625	95.0	460	118
125	3600	444TS	SPM4412TS-4	29,507	SD4	41.08	1,539	95.0	460	137
		444T	SPM4410T-4	29,246	SD4	44.96	1,950	96.2	460	142
	1800	444TS	SPM4410TS-4	29,246	SD4	41.08	1,950	96.2	460	142
		444T	SPM4410TR-4	31,349	SD4	44.97	1,950	96.2	460	142
	1200	445T	SPM4411T-4	36,604	SD4	60.35	3,407	95.8	460	150
		445TS	SPM4413TS-4	34,593	SD4	44.58	2,017	96.2	460	164
150	3600	447T	SPM4406T-4	34,060	SD4	48.46	2,184	96.2	460	170
		447T	SPM4406TR-4	36,365	SD4	44.97	2,184	96.5	460	170
	1800	447TS	SPM4406TS-4	34,060	SD4	44.58	2,184	96.2	460	170
		447T	SPM44156T-4	41,270	SD4	48.46	2,546	96.2	460	175
	1200	447TS	SPM4416TS-4	40,961	SD4	44.58	2,330	95.4	460	216
200	3600	447T	SPM4407T-4	41,215	SD4	53.47	2,545	96.5	460	224
		447T	SPM4407TR-4	43,316	SD4	53.47	2,621	96.5	460	224
	1800	447TS	SPM4407TS-4	41,215	SD4	49.72	2,573	96.5	460	224
		447T	SPM44206T-4	52,301	SD4	60.35	3,282	96.2	460	229
	1200	L449T	SPM44256T-4	75,415	SD4	60.34	3,683	96.2	460	293
250	3600	449TS	SPM44252TS-4	62,638	SD4	49.72	2,995	96.2	460	266
		L449T	SPM4408T-4	52,301	SD4	60.35	3,389	96.5	460	280
	1800	L449T	SPM4408TR-4	54,402	SD4	60.34	3,389	96.5	460	280
		L449TS	SPM4408TS-4	54,402	SD4	56.71	3,389	96.5	460	280
	1200	L449T	SPM44256T-4	75,415	SD4	60.34	3,683	96.2	460	293
300	3600	449TS	SPM44302TS-4	91,546	SD4	49.72	2,595	96.2	460	318
	1800	L449T	SPM44304T-4	72,086	SD4	60.35	3,598	96.8	460	342
		L449TS	SPM44304TS-4	72,086	SD4	56.71	3,598	96.8	460	342

Cast iron frame



### C face, foot mount

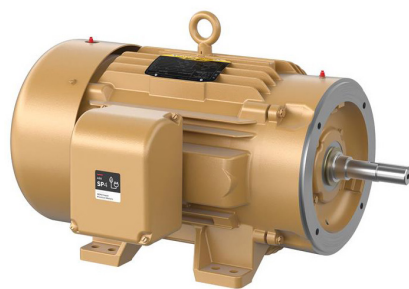
Hp	RPM	NEMA frame	Catalog number	List price	Disc. sym.	"C" dim.	Aprx. Wt. (lb)	Full load efficiency	Voltage	Amps
25	3600	284TS	<b>CSPM4107T</b>	8,340	SD4	26.75	396	93.0	230/460	28
	1800	284T	<b>CSPM4103T</b>	8,024	SD4	28.00	490	94.5	230/460	29
	1200	324T	<b>CSPM4111T</b>	11,780	SD4	30.71	680	94.1	230/460	31
30	3600	286TS	<b>CSPM4108T</b>	9,878	SD4	26.63	445	93.0	230/460	33
	1800	286T	<b>CSPM4104T</b>	9,261	SD4	27.93	475	94.5	230/460	35
	1200	326T	<b>CSPM4117T</b>	14,773	SD4	30.71	675	94.1	230/460	39
40	3600	324TS	<b>CSPM4109T</b>	13,279	SD4	29.13	451	93.6	230/460	45
	1800	324T	<b>CSPM4110T</b>	11,823	SD4	30.71	720	95.0	230/460	46
	1200	364T	<b>CSPM4308T</b>	17,977	SD4	33.48	990	95.0	230/460	45
50	3600	326TS	<b>CSPM4114T</b>	13,841	SD4	29.21	587	94.1	230/460	56
	1800	326T	<b>CSPM4115T</b>	13,605	SD4	30.71	720	95.4	230/460	60
	1200	365T	<b>CSPM4312T</b>	20,980	SD4	33.48	928	95.0	230/460	55.1
60	3600	364TS	<b>CSPM4310T</b>	19,035	SD4	31.35	929	94.5	230/460	65.4
	1800	364T	<b>CSPM4314T</b>	18,842	SD4	33.49	965	95.4	230/460	70
75	3600	365TS	<b>CSPM4313T</b>	21,563	SD4	31.35	1005	95.0	230/460	80.7
	1800	365T	<b>CSPM4316T</b>	21,429	SD4	33.48	958	95.8	230/460	88
100	3600	405TS	<b>CSPM4402T-4</b>	27,191	SD4	35.19	1272	96.2	460	113
	1800	405T	<b>CSPM4400T-4</b>	27,289	SD4	38.19	1296	96.2	460	115
125	1800	444T	<b>CSPM4410T-4</b>	32,778	SD4	44.96	1950	96.2	460	142
150	1800	447T	<b>CSPM4406T-4</b>	37,793	SD4	48.46	2184	96.2	460	170
200	1800	447T	<b>CSPM4407T-4</b>	45,463	SD4	53.47	2545	96.5	460	224

Cast iron frame

# SEVERE DUTY CLOSE-COUPLED PUMP

Three phase, totally enclosed

25 - 50 Hp



## Features

- Robust cast iron TEFC construction
- Oversize ball bearings for the pump industry
- Locked DE bearing to allow mounting in any configuration
- 304 stainless steel nameplates
- Class I, Division 2 Groups A, B, C & D
- Class II, Division 2 Groups F & G
- Designed for longevity with a 4 year warranty on SP4 motors
- Suitable for inverter use per NEMA MG1 Part 31.4.4.2

## Applications

- Cement
- Food and Beverage
- Industrial pumps
- Wastewater
- Agricultural
- General purpose pumps
- Aggregate

IP55

## C-face foot mounted

Hp	RPM	NEMA Frame	Catalog Number	List Price	Disc Sym.	"C" Dim.	Aprx. Wt. (lb)	Full Load Efficiency	Voltage	Full Load Amps
Mechanical seal, Type JM										
230/460 volt										
25	3600	284JM	SPJMM4107T	8,141	PD4	28.88	396	93.0	230/460	28.0
	1800	2843M	SPJMM4103T	8,433	PD4	28.88	490	94.5	230/460	29.0
30	3600	286JM	SPJMM4108T	10,299	PD4	28.88	445	93.0	230/460	33.0
	1800	286JM	SPJMM4104T	10,972	PD4	28.88	490	94.5	230/460	35.0
40	3600	324JM	SPJMM4109T	12,170	PD4	30.88	451	93.6	230/460	45.0
	1800	324JM	SPJMM4110T	12,735	PD4	30.96	720	95.0	230/460	48.0
50	3600	326JM	SPJMM4114T	14,167	PD4	30.96	587	94.1	230/460	56.0
	1800	326JM	SPJMM4115T	14,364	PD4	30.96	720	95.4	230/460	58.0

## Packed pump, Type JP

230/460 volt										
25	3600	284JP	SPJPM4107T	8,141	PD4	31.75	396	93.0	230/460	28.0
	1800	284JP	SPJPM4103T	8,433	PD4	31.75	450	94.5	230/460	29.0
30	3600	286JP	SPJPM4108T	10,299	PD4	31.75	445	93.0	230/460	33.0
	1800	286JP	SPJPM4104T	10,972	PD4	31.75	490	94.5	230/460	35.0
40	3600	324JP	SPJPM4109T	12,170	PD4	33.75	451	93.6	230/460	45.0
	1800	324JP	SPJPM4110T	12,735	PD4	33.83	720	95.0	230/460	48.0
50	3600	326JP	SPJPM4114T	14,167	PD4	33.83	587	94.1	230/460	56.0
	1800	326JP	SPJPM4115T	14,364	PD4	33.83	720	95.4	230/460	58.0

Cast iron frame

Red catalog number indicates **NEW** product

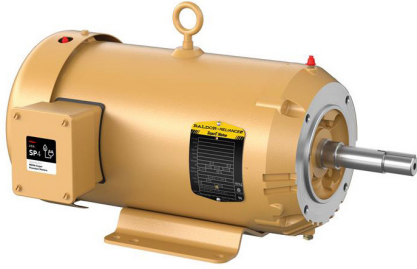
# CLOSE-COUPLED PUMP

Three phase, enclosed,  
with shaft grounding ring

1 - 10 Hp



IP54



## Features

- Internal shaft grounding ring for bearing current mitigation
- Class H insulation for increased protection with inverter use
- 60 Hz designs
- JM pump shaft
- Suitable for inverter use per NEMA MG1 Part 31.4.4.2
- Designed for longevity with a 4 year warranty on SP4 motors

## Applications:

- Motor flange and shaft designed to support pump unit for direct mounting with Type JM pumps

## Foot mounted, Mechanical seal, Type JM, with shaft grounding ring

Hp	RPM	NEMA Frame	Catalog Number	List Price	Disc Sym.	"C" Dim.	Aprx. Wt. (lb)	Full Load Efficiency	Voltage	Full Load Amps
1	1800	143JM	<b>SPJMM3546T-G</b>	1,655	PC4	15.41	37	85.5	230/460	1.7
	3600	143JM	<b>SPJMM3550T-G</b>	1,646	PC4	15.41	38	85.5	230/460	2.1
1 1/2	1800	145JM	<b>SPJMM3554T-G</b>	1,913	PC4	15.41	45	87.5	230/460	2.3
	3600	145JM	<b>SPJMM3555T-G</b>	1,868	PC4	16.28	50	86.5	230/460	2.4
2	1800	145JM	<b>SPJMM3558T-G</b>	1,998	PC4	17.66	62	88.5	230/460	2.8
	3600	182JM	<b>SPJMM3610T-G</b>	2,076	PC4	18.06	81	88.5	230/460	3.4
3	1800	182JM	<b>SPJMM3611T-G</b>	2,248	PC4	19.55	93	91.0	230/460	4.2
	3600	184JM	<b>SPJMM3613T-G</b>	2,393	PC4	19.55	94	89.5	230/460	5.5
5	1800	184JM	<b>SPJMM3615T-G</b>	2,253	PC4	19.99	101	91.0	230/460	6.6
	3600	213JM	<b>SPJMM3709T-G</b>	3,114	PC4	19.76	121	90.2	230/460	9.0
7.5	1800	213JM	<b>SPJMM3710T-G</b>	3,328	PC4	22.38	165	92.4	230/460	9.9
	3600	215JM	<b>SPJMM3711T-G</b>	3,505	PC4	22.38	187	91.7	230/460	10.3
10	1800	215JM	<b>SPJMM3714T-G</b>	3,828	PC4	22.38	187	92.4	230/460	13.0

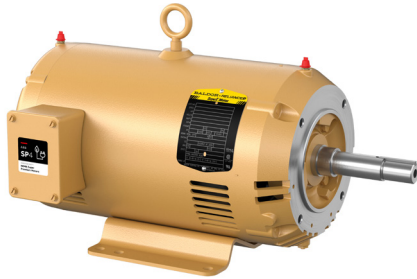
# CLOSE-COUPLED PUMP

Three phase, open, with shaft  
grounding ring

1 - 20 Hp



IP23



## Features

- Internal shaft grounding ring for bearing current mitigation
- Class H insulation for increased protection with inverter use
- 60 Hz designs
- JM pump shaft
- Suitable for inverter use per NEMA MG1 Part 31.4.4.2
- Designed for longevity with a 4 year warranty on SP4 motors

## Applications:

- Motor flange and shaft designed to support pump unit for direct mounting with Type JM pumps

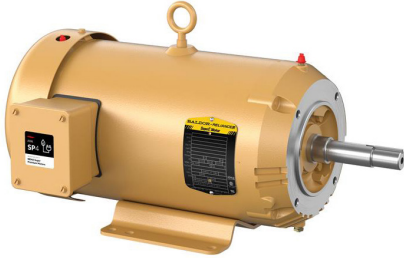
## Foot mounted, Mechanical seal, Type JM, with shaft grounding ring

Hp	RPM	NEMA Frame	Catalog Number	List Price	Disc Sym.	"C" Dim.	Aprx. Wt. (lb)	Full Load Efficiency	Voltage	Full Load Amps
1	1800	143JM	<b>SPJMM3116T-G</b>	1,567	PC4	13.75	37	85.5	230/460	1.6
1 1/2	1800	145JM	<b>SPJMM3154T-G</b>	1,671	PC4	14.25	45	87.5	230/460	2.3
2	1800	145JM	<b>SPJMM3157T-G</b>	1,801	PC4	16.50	56	88.5	230/460	2.7
3	3600	145JM	<b>SPJMM3158T-G</b>	2,003	PC4	16.50	64	88.5	230/460	3.5
	1800	182JM	<b>SPJMM3211T-G</b>	2,035	PC4	18.00	92	91.0	230/460	4.0
5	3600	182JM	<b>SPJMM3212T-G</b>	2,406	PC4	16.50	81	91.0	230/460	5.6
	1800	184JM	<b>SPJMM3218T-G</b>	2,253	PC4	18.44	101	91.0	230/460	6.6
7 1/2	3600	184JM	<b>SPJMM3219T-G</b>	2,775	PC4	18.00	96	90.2	230/460	8.4
	1800	213JM	<b>SPJMM3311T-G</b>	3,286	PC4	20.07	158	92.4	230/460	10.0
10	3600	213JM	<b>SPJMM3312T-G</b>	3,561	PC4	19.32	130	91.7	230/460	11.5
	1800	215JM	<b>SPJMM3313T-G</b>	3,516	PC4	20.07	158	92.4	230/460	12.1
15	1800	254JM	<b>SPJMM2513T-G</b>	5,033	PC4	24.69	289	93.6	230/460	18.3
	3600	215JM	<b>SPJMM3314T-G</b>	4,449	PC4	20.82	187	92.4	230/460	17.0
20	3600	254JM	<b>SPJMM2514T-G</b>	5,465	PC4	23.19	242	92.4	230/460	23.0
	1800	256JM	<b>SPJMM2515T-G</b>	5,851	PC4	26.69	404	94.1	230/460	24.0

# CLOSE-COUPLED PUMP

## Three phase, totally enclosed

### 1 - 15 Hp


**IP54**

**Features**

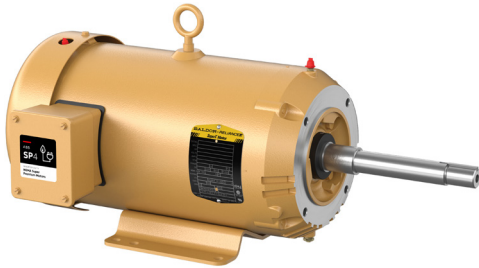
- 60 Hz designs
- JM and JP pump shaft
- Suitable for inverter use per NEMA MG1 Part 31.4.4.2
- Designed for longevity with a 4 year warranty on SP4 motors

**Applications:**

- Motor flange and shaft designed to support pump unit for direct mounting with Type JM and JP pumps

**Foot mounted, Mechanical seal, Type JM**

Hp	RPM	NEMA Frame	Catalog Number	List Price	Disc Sym.	"C" Dim.	Aprx. Wt. (lb)	Full Load Efficiency	Voltage	Full Load Amps
1	1800	143JM	<b>SPJMM3546T</b>	1,362	PC4	15.41	37	85.5	230/460	1.6
	3600	143JM	<b>SPJMM3550T</b>	1,354	PC4	15.41	38	85.5	230/460	2.1
1 1/2	1800	145JM	<b>SPJMM3554T</b>	1,451	PC4	15.41	45	87.5	230/460	2.3
	3600	145JM	<b>SPJMM3555T</b>	1,558	PC4	16.28	50	86.5	230/460	2.4
2	1800	145JM	<b>SPJMM3558T</b>	1,755	PC4	17.66	62	88.5	230/460	2.8
	3600	182JM	<b>SPJMM3610T</b>	1,992	PC4	18.06	81	88.5	230/460	3.4
3	1800	182JM	<b>SPJMM3611T</b>	1,887	PC4	19.55	93	91.0	230/460	4.2
	3600	184JM	<b>SPJMM3613T</b>	2,032	PC4	19.55	94	89.5	230/460	5.5
5	1800	184JM	<b>SPJMM3615T</b>	1,724	PC4	19.99	101	91.0	230/460	6.6
	3600	213JM	<b>SPJMM3709T</b>	2,427	PC4	19.76	121	90.2	230/460	9.0
7 1/2	1800	213JM	<b>SPJMM3710T</b>	2,733	PC4	22.38	165	92.4	230/460	9.9
	3600	215JM	<b>SPJMM3711T</b>	2,995	PC4	22.38	187	91.7	230/460	10.3
10	1800	215JM	<b>SPJMM3714T</b>	3,083	PC4	22.38	187	92.4	230/460	13.0
	3600	215JM	<b>SPJMM3713T</b>	4,197	PC4	22.38	187	92.4	230/460	17.0



#### Foot mounted, Mechanical seal, Type JP

Hp	RPM	NEMA Frame	Catalog Number	List Price	Disc Sym.	"C" Dim.	Aprx. Wt. (lb)	Full Load Efficiency	Voltage	Full Load Amps
1 1/2	1800	145JP	<b>SPJPM3554T</b>	1,743	PC4	18.47	45	87.5	230/460	2.3
	3600	145JP	<b>SPJPM3555T</b>	1,698	PC4	19.35	50	86.5	230/460	2.4
2	1800	145JP	<b>SPJPM3558T</b>	1,827	PC4	20.72	62	88.5	230/460	2.8
	3600	182JP	<b>SPJPM3610T</b>	2,043	PC4	21.11	81	88.5	230/460	3.4
3	1800	182JP	<b>SPJPM3611T</b>	2,057	PC4	22.61	93	91.0	230/460	4.2
	3600	184JP	<b>SPJPM3613T</b>	2,215	PC4	22.61	94	89.5	230/460	5.5
5	1800	184JP	<b>SPJPM3615T</b>	2,109	PC4	23.05	101	91.0	230/460	6.6
	3600	213JP	<b>SPJPM3709T</b>	3,229	PC4	23.64	121	90.2	230/460	9.0
7.5	1800	213JP	<b>SPJPM3710T</b>	2,979	PC4	26.26	165	92.4	230/460	9.9
	3600	215JP	<b>SPJPM3711T</b>	3,265	PC4	26.26	187	91.7	230/460	10.3
10	1800	215JP	<b>SPJPM3714T</b>	3,360	PC4	26.26	187	92.4	230/460	13.0
	3600	215JP	<b>SPJPM3713T</b>	4,360	PC4	26.26	187	92.4	230/460	17.0



#### Footless Mechanical seal, Type JM

Hp	RPM	NEMA Frame	Catalog Number	List Price	Disc Sym.	"C" Dim.	Aprx. Wt. (lb)	Full Load Efficiency	Voltage	Full Load Amps
1	1800	143JM	<b>VSPJMM3546T</b>	1,240	PC4	14.41	37	85.5	230/460	1.6
1 1/2	1800	145JM	<b>VSPJMM3554T</b>	1,308	PC4	15.41	45	87.5	230/460	2.3
2	1800	145JM	<b>VSPJMM3558T</b>	1,567	PC4	17.66	62	88.5	230/460	2.8
3	1800	182JM	<b>VSPJMM3611T</b>	1,788	PC4	19.55	93	91.0	230/460	4.2
5	1800	184JM	<b>VSPJMM3615T</b>	2,109	PC4	19.99	101	91.0	230/460	6.6
7 1/2	3600	213JM	<b>VSPJMM3709T</b>	3,229	PC4	19.76	121	90.2	230/460	9.0
	1800	213JM	<b>VSPJMM3710T</b>	3,019	PC4	22.38	165	92.4	230/460	9.9
10	1800	215JM	<b>VSPJMM3714T</b>	3,497	PC4	22.38	187	92.4	230/460	13.0

# CLOSE-COUPLED PUMP

Three phase, open

1 - 20 Hp



IP23



## Features

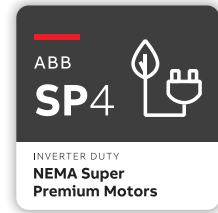
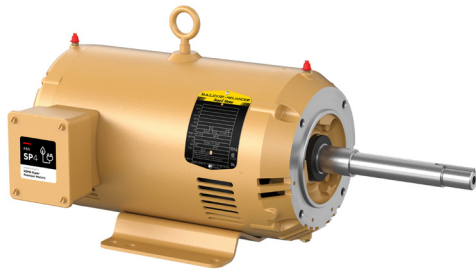
- 60 Hz designs
- JM and JP pump shaft
- Suitable for inverter use per NEMA MG1 Part 31.4.4.2
- Designed for longevity with a 4 year warranty on SP4 motors

## Applications:

- Motor flange and shaft designed to support pump unit for direct mounting with Type JM and JP pumps

## Foot mounted, Mechanical seal, Type JM

Hp	RPM	NEMA Frame	Catalog Number	List Price	Disc Sym.	"C" Dim.	Aprx. Wt. (lb)	Full Load Efficiency	Voltage	Full Load Amps
1	1800	143JM	<b>SPJMM3116T</b>	1,304	PC4	13.75	37	85.5	230/460	1.6
	3600	143JM	<b>SPJMM3120T</b>	1,369	PC4	13.75	38	85.5	230/460	2.1
1 1/2	1800	145JM	<b>SPJMM3154T</b>	1,411	PC4	14.25	45	87.5	230/460	2.3
	3600	143JM	<b>SPJMM3155T</b>	1,560	PC4	13.75	43	86.5	230/460	2.5
2	1800	145JM	<b>SPJMM3157T</b>	1,502	PC4	16.50	56	88.5	230/460	2.7
	3600	145JM	<b>SPJMM3158T</b>	1,705	PC4	16.50	64	88.5	230/460	3.5
3	1800	182JM	<b>SPJMM3211T</b>	1,708	PC4	18.00	92	91.0	230/460	4.0
	3600	182JM	<b>SPJMM3212T</b>	1,885	PC4	16.50	81	91.0	230/460	5.6
5	1800	184JM	<b>SPJMM3218T</b>	1,879	PC4	18.44	101	91.0	230/460	6.6
	1200	215JM	<b>SPJMM3309T</b>	3,204	PC4	19.32	141	90.2	230/460	7.3
7.5	3600	184JM	<b>SPJMM3219T</b>	2,702	PC4	18.00	96	90.2	208-230/460	8.4
	1800	213JM	<b>SPJMM3311T</b>	2,789	PC4	20.07	158	92.4	230/460	10.0
10	1200	254JM	<b>SPJMM2506T</b>	4,403	PC4	24.69	248	91.7	230/460	11.0
	3600	213JM	<b>SPJMM3312T</b>	3,184	PC4	19.32	130	91.7	208-230/460	11.5
15	1200	254JM	<b>SPJMM2511T</b>	5,343	PC4	25.69	288	92.4	230/460	14.5
	1800	215JM	<b>SPJMM3313T</b>	3,048	PC4	20.07	158	92.4	230/460	12.1
20	3600	215JM	<b>SPJMM3314T</b>	4,270	PC4	20.82	187	92.4	230/460	17.0
	1800	254JM	<b>SPJMM2513T</b>	4,631	PC4	24.69	289	93.6	230/460	18.3
20	3600	254JM	<b>SPJMM2514T</b>	5,013	PC4	23.19	242	92.4	230/460	23.0
	1800	256JM	<b>SPJMM2515T</b>	5,399	PC4	26.69	404	94.1	230/460	24.0



#### Foot mounted, Mechanical seal, Type JP

Hp	RPM	NEMA Frame	Catalog Number	List Price	Disc Sym.	"C" Dim.	Aprx. Wt. (lb)	Full Load Efficiency	Voltage	Full Load Amps
1	1800	143JP	<b>SPJPM3116T</b>	1,547	PC4	16.81	37	85.5	230/460	1.6
1 1/2	1800	145JP	<b>SPJPM3154T</b>	1,604	PC4	17.32	45	87.5	230/460	2.3
2	1800	145JP	<b>SPJPM3157T</b>	1,699	PC4	19.57	56	88.5	230/460	2.7
3	3600	145JP	<b>SPJPM3158T</b>	1,705	PC4	19.57	64	88.5	230/460	3.5
	1800	182JP	<b>SPJPM3211T</b>	1,999	PC4	21.06	92	91.0	230/460	4.0
5	3600	182JP	<b>SPJPM3212T</b>	1,885	PC4	19.56	81	91.0	230/460	5.6
	1800	184JP	<b>SPJPM3218T</b>	2,146	PC4	21.50	101	91.0	230/460	6.6
7 1/2	3600	184JP	<b>SPJPM3219T</b>	2,720	PC4	21.06	96	90.2	230/460	8.4
	1800	213JP	<b>SPJPM3311T</b>	3,078	PC4	23.94	158	92.4	230/460	10.0
10	3600	213JP	<b>SPJPM3312T</b>	3,184	PC4	23.19	130	91.7	230/460	11.5
	1800	215JP	<b>SPJPM3313T</b>	3,132	PC4	23.94	158	92.4	230/460	12.1
15	3600	215JP	<b>SPJPM3314T</b>	4,270	PC4	24.69	187	92.4	230/460	17.0
	1800	254JP	<b>SPJPM2513T</b>	4,507	PC4	27.56	289	93.6	230/460	18.3
20	3600	254JP	<b>SPJPM2514T</b>	5,013	PC4	26.06	242	92.4	230/460	23.0
	1800	256JP	<b>SPJPM2515T</b>	5,399	PC4	29.56	404	94.1	230/460	24.0



#### Footless, Mechanical seal, Type JM

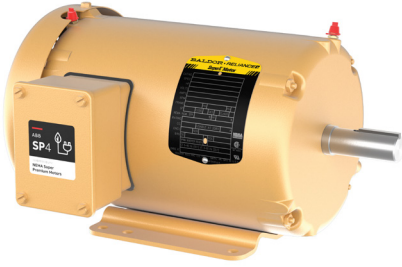
Hp	RPM	NEMA Frame	Catalog Number	List Price	Disc Sym.	"C" Dim.	Aprx. Wt. (lb)	Full Load Efficiency	Voltage	Full Load Amps
1	1800	143JM	<b>VSPJMM3116T</b>	1,304	PC4	14.51	37	85.5	230/460	1.6
1 1/2	1800	145JM	<b>VSPJMM3154T</b>	1,373	PC4	15.51	45	87.5	230/460	2.3
2	1800	145JM	<b>VSPJMM3157T</b>	1,502	PC4	17.66	56	88.5	230/460	2.7
3	3600	145JM	<b>VSPJMM3158T</b>	1,705	PC4	17.66	64	88.5	230/460	3.5
	1800	182JM	<b>VSPJMM3211T</b>	1,662	PC4	19.55	92	91.0	230/460	4.0
5	3600	182JM	<b>VSPJMM3212T</b>	1,185	PC4	18.05	81	91.0	230/460	5.6
	1800	184JM	<b>VSPJMM3218T</b>	1,879	PC4	19.98	101	91.0	230/460	6.6
7 1/2	3600	184JM	<b>VSPJMM3219T</b>	2,720	PC4	19.55	96	90.2	230/460	8.4
	1800	213JM	<b>VSPJMM3311T</b>	2,789	PC4	21.59	158	92.4	230/460	10.0
10	3600	213JM	<b>VSPJMM3312T</b>	3,184	PC4	20.84	130	91.7	230/460	11.5
	1800	215JM	<b>VSPJMM3313T</b>	3,048	PC4	21.59	158	92.4	230/460	12.1
15	3600	215JM	<b>VSPJMM3314T</b>	4,270	PC4	22.34	187	92.4	230/460	17.0

# HVAC

## Three phase, totally enclosed, with internal shaft grounding ring 1 - 10 Hp



IP54



### Features

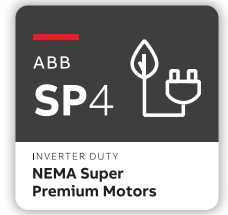
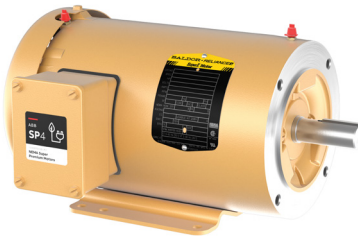
- Internal grounding ring for bearing current mitigation
- Class H insulation for increased protection on inverter use
- 60 Hz designs
- Suitable for inverter use per NEMA MG1 Part 31.4.4.2
- Suitable for 208 volt
- Designed for longevity with a 4 year warranty on SP4 motors

### Applications

- Fans
- Pumps
- Blowers
- Unit handling
- HVACR systems
- Variable speed applications
- Other general purpose applications

### Foot mounted, with internal shaft grounding ring

Hp	RPM	NEMA Frame	Catalog Number	List Price	Disc Sym.	"C" Dim.	Aprx. Wt. (lb)	Full Load Efficiency	Voltage	Full Load Amps
1	3600	56H	<b>SPM3545-G</b>	1,428	HV4	12.91	35	82.5	230/460	1.3
	1800	143T	<b>SPM3546T-G</b>	1,565	HV4	12.29	37	85.5	230/460	1.6
	1200	145T	<b>SPM3556T-G</b>	1,815	HV4	14.19	47	84.0	230/460	1.7
1 1/2	3600	143T	<b>SPM3550T-G</b>	1,601	HV4	12.29	38	85.5	230/460	2.1
	1800	145T	<b>SPM3554T-G</b>	1,615	HV4	13.29	45	87.5	230/460	2.3
	1200	182T	<b>SPM3607T-G</b>	2,128	HV4	18.04	90	88.5	230/460	2.5
2	3600	143T	<b>SPM3555T-G</b>	1,724	HV4	14.19	50	86.5	230/460	2.4
	1800	145T	<b>SPM3558T-G</b>	1,663	HV4	15.56	62	88.5	230/460	2.8
	1200	184T	<b>SPM3614T-G</b>	2,214	HV4	18.48	101	89.5	230/460	3.3
3	3600	182T	<b>SPM3610T-G</b>	1,936	HV4	16.55	81	88.5	230/460	3.4
	1800	182T	<b>SPM3611T-G</b>	1,861	HV4	18.04	93	91.0	230/460	4.2
	1200	213T	<b>SPM3704T-G</b>	2,817	HV4	19.02	127	90.2	230/460	4.5
5	3600	184T	<b>SPM3613T-G</b>	2,109	HV4	18.04	94	89.5	230/460	5.5
	1800	184T	<b>SPM3615T-G</b>	2,003	HV4	18.48	101	91.0	230/460	6.6
	1200	215T	<b>SPM3708T-G</b>	3,131	HV4	20.52	149	90.2	230/460	7.4
7 1/2	3600	213T	<b>SPM3709T-G</b>	3,025	HV4	17.89	121	90.2	230/460	9
	1800	213T	<b>SPM3710T-G</b>	2,776	HV4	20.52	165	92.4	230/460	9.9
10	3600	215T	<b>SPM3711T-G</b>	3,061	HV4	20.52	187	91.7	230/460	10.3
	1800	215T	<b>SPM3714T-G</b>	3,083	HV4	20.52	187	92.4	230/460	13


**C-face foot mounted, with internal shaft grounding ring**

Hp	RPM	NEMA Frame	Catalog Number	List Price	Disc Sym.	"C" Dim.	Aprx. Wt. (lb)	Full Load Efficiency	Voltage	Full Load Amps
1	3600	56HC	<b>CSPM3545-G</b>	1,611	HV4	12.91	35	82.5	230/460	1.3
	1800	143TC	<b>CSPM3546T-G</b>	1,840	HV4	12.29	37	85.5	230/460	1.6
	1200	145TC	<b>CSPM3556T-G</b>	2,064	HV4	14.19	47	84.0	230/460	1.7
1 1/2	3600	143TC	<b>CSPM3550T-G</b>	1,820	HV4	13.29	38	85.5	230/460	2.1
	1800	145TC	<b>CSPM3554T-G</b>	1,999	HV4	13.29	45	87.5	230/460	2.3
	1200	182TC	<b>CSPM3607T-G</b>	2,438	HV4	18.04	90	88.5	230/460	2.5
2	3600	145TC	<b>CSPM3555T-G</b>	1,962	HV4	14.19	50	86.5	230/460	2.4
	1800	145TC	<b>CSPM3558T-G</b>	2,093	HV4	14.16	62	88.5	230/460	2.8
	1200	184TC	<b>CSPM3614T-G</b>	2,535	HV4	18.48	101	89.5	230/460	3.3
3	3600	182TC	<b>CSPM3610T-G</b>	2,579	HV4	16.55	81	88.5	230/460	3.4
	1800	182TC	<b>CSPM3611T-G</b>	2,228	HV4	18.04	93	91.0	230/460	4.2
	1200	213TC	<b>CSPM3704T-G</b>	3,305	HV4	19.75	127	90.2	230/460	4.5
5	3600	184TC	<b>CSPM3613T-G</b>	2,415	HV4	18.04	94	89.5	230/460	5.5
	1800	184TC	<b>CSPM3615T-G</b>	2,294	HV4	18.48	101	91.0	230/460	6.6
	1200	215TC	<b>CSPM3708T-G</b>	3,662	HV4	21.25	149	90.2	230/460	7.4
7 1/2	3600	213TC	<b>CSPM3709T-G</b>	3,541	HV4	18.63	121	90.2	230/460	9.0
	1800	213TC	<b>CSPM3710T-G</b>	3,257	HV4	21.25	165	92.4	230/460	9.9
10	3600	215TC	<b>CSPM3711T-G</b>	3,582	HV4	21.25	187	91.7	230/460	10.3
	1800	215TC	<b>CSPM3714T-G</b>	3,607	HV4	21.25	187	92.4	230/460	13.0

# HVAC

## Three phase, open, with internal shaft grounding ring

### 1 - 20 Hp



#### Features

- Internal shaft grounding ring for bearing current mitigation
- Class H insulation for increased protection on inverter use
- 60 Hz designs
- Suitable for inverter use per NEMA MG1 part 31.4.4.2
- Cooler operation for longer lifespan
- Suitable for 208 volt
- Designed for longevity with a 4 year warranty on SP4 motors

#### Applications

- Fans
- Pumps
- Blowers
- Unit handling
- HVACR systems
- Variable speed applications
- Other general purpose applications

IP22

#### Foot mounted, with internal shaft grounding ring

Hp	RPM	NEMA Frame	Catalog Number	List Price	Disc. Sym.	"C" Dim.	Aprx. Wt. (lb)	Full Load Efficiency	Voltage	Full Load Amps
1	3600	56H	<b>SPM31115-G</b>	1,262	HV4	11.75	35	82.5	230/460	1.3
	1800	143T	<b>SPM3116T-G</b>	1,573	HV4	11.12	37	85.5	230/460	1.6
	1200	145T	<b>SPM3156T-G</b>	1,602	HV4	13.00	47	84.0	230/460	1.7
1 1/2	3600	143T	<b>SPM3120T-G</b>	1,396	HV4	11.12	38	85.5	230/460	2.1
	1800	145T	<b>SPM3154T-G</b>	1,631	HV4	12.13	45	87.5	230/460	2.3
2	3600	143T	<b>SPM3155T-G</b>	1,587	HV4	11.62	43	86.5	230/460	2.5
	1800	145T	<b>SPM3157T-G</b>	1,726	HV4	14.38	56	88.5	230/460	2.7
	1200	184T	<b>SPM3215T-G</b>	1,915	HV4	18.43	101	89.5	230/460	3.3
3	3600	145T	<b>SPM3158T-G</b>	1,602	HV4	14.38	64	88.5	230/460	3.5
	1800	182T	<b>SPM3211T-G</b>	1,893	HV4	17.99	92	91.0	230/460	4.0
	1200	213T	<b>SPM3305T-G</b>	2,383	HV4	17.45	127	90.2	230/460	4.5
5	3600	182T	<b>SPM3212T-G</b>	1,778	HV4	16.49	81	91.0	230/460	5.6
	1800	184T	<b>SPM3218T-G</b>	2,040	HV4	18.43	101	91.0	230/460	6.6
	1200	215T	<b>SPM3309T-G</b>	3,000	HV4	17.45	141	90.2	230/460	7.3
7 1/2	3600	184T	<b>SPM3219T-G</b>	2,613	HV4	17.99	96	90.2	230/460	8.4
	1800	213T	<b>SPM3311T-G</b>	2,875	HV4	18.20	158	92.4	230/460	10.0
	1200	254T	<b>SPM2506T-G</b>	3,647	HV4	23.19	248	91.7	230/460	11.0
10	3600	213T	<b>SPM3312T-G</b>	2,981	HV4	17.45	130	91.7	230/460	11.5
	1800	215T	<b>SPM3313T-G</b>	3,397	HV4	18.20	158	92.4	230/460	12.1
	1200	256T	<b>SPM2511T-G</b>	4,587	HV4	24.21	288	92.4	230/460	14.5
15	3600	215T	<b>SPM3314T-G</b>	4,066	HV4	18.95	187	92.4	230/460	17.0
	1800	254T	<b>SPM2513T-G</b>	4,774	HV4	23.20	289	93.6	230/460	18.3
20	3600	254T	<b>SPM2514T-G</b>	4,837	HV4	21.69	242	92.4	230/460	23.0
	1800	256T	<b>SPM2515T-G</b>	5,187	HV4	25.21	404	94.1	230/460	24.0



**C-face foot mounted, with internal shaft grounding seal**

Hp	RPM	NEMA Frame	Catalog Number	List Price	Disc. Sym.	"C" Dim.	Aprx. Wt. (lb)	Full Load Efficiency	Voltage	Full Load Amps
1	3600	56C	<b>CSPM31115-G</b>	1,421	HV4	11.07	35	82.5	230/460	1.3
	1800	143TC	<b>CSPM3116T-G</b>	1,726	HV4	11.62	37	85.5	230/460	1.6
	1200	145TC	<b>CSPM3156T-G</b>	1,759	HV4	13.00	47	84.0	230/460	1.7
1 1/2	3600	143TC	<b>CSPM3120T-G</b>	1,525	HV4	11.62	38	85.5	230/460	2.1
	1800	145TC	<b>CSPM3154T-G</b>	1,791	HV4	12.13	45	87.5	230/460	2.3
	1200	182TC	<b>CSPM3207T-G</b>	2,037	HV4	16.50	90	88.5	230/460	2.5
2	3600	56C	<b>CSPM31155-G</b>	1,662	HV4	12.07	43	86.5	230/460	2.5
	1800	145TC	<b>CSPM3157T-G</b>	1,901	HV4	14.38	56	88.5	230/460	2.7
	1200	184TC	<b>CSPM3215T-G</b>	2,076	HV4	16.93	101	89.5	230/460	3.3
3	3600	145TC	<b>CSPM3158T-G</b>	1,759	HV4	14.38	64	88.5	230/460	3.5
	1800	182TC	<b>CSPM3211T-G</b>	2,051	HV4	16.50	92	91.0	230/460	4.0
	1200	213TC	<b>CSPM3305T-G</b>	2,580	HV4	18.19	127	90.2	230/460	4.5
5	3600	182TC	<b>CSPM3212T-G</b>	1,919	HV4	14.99	81	91.0	230/460	5.6
	1800	184TC	<b>CSPM3218T-G</b>	2,218	HV4	16.93	101	91.0	230/460	6.6
	1200	215TC	<b>CSPM3309T-G</b>	3,283	HV4	18.19	141	90.2	230/460	7.3
7 1/2	3600	184TC	<b>CSPM3219T-G</b>	2,869	HV4	16.50	96	90.2	230/460	8.4
	1800	213TC	<b>CSPM3311T-G</b>	3,142	HV4	18.94	158	92.4	230/460	10.0
	1200	254TC	<b>CSPM2506T-G</b>	3,948	HV4	23.19	248	91.7	230/460	11.0
10	3600	213TC	<b>CSPM3312T-G</b>	3,261	HV4	18.19	130	91.7	230/460	11.5
	1800	215TC	<b>CSPM3313T-G</b>	3,735	HV4	18.94	158	92.4	230/460	12.1
	1200	256TC	<b>CSPM2511T-G</b>	5,018	HV4	24.21	288	92.4	230/460	14.5
15	3600	215TC	<b>CSPM3314T-G</b>	4,496	HV4	19.69	187	92.4	230/460	17.0
	1800	254TC	<b>CSPM2513T-G</b>	5,230	HV4	24.21	289	93.6	230/460	18.3
20	3600	254TC	<b>CSPM2514T-G</b>	5,303	HV4	21.69	242	92.4	230/460	23.0
	1800	256TC	<b>CSPM2515T-G</b>	5,701	HV4	25.21	404	94.1	230/460	24.0

# ENERGY SAVINGS

How does this translate to power consumption reduction and energy savings?

Here are results on actual customer test result in the US market; however, depending on energy costs, these savings could be significantly greater.

Motor: 10 Hp/1800 RPM

NEMA Premium®	Upgrade: SP4 NEMA Premium 4
Average unit consumption per day (based on seven-day average) 200.1 kWh	Average unit consumption per day (based on seven-day average) 193.8 kWh
Estimated annual energy cost (based on 0.12 \$ per kWh) \$8,764	Estimated annual energy cost (based on 0.12 \$ per kWh) \$8,488
Tons/Year CO <sub>2</sub> 31 Tons	Tons/Year CO <sub>2</sub> 30 Tons
<b>Energy cost savings per motor</b>	<b>\$276/motor</b>



Energy reduction:  
**3% of 1 Ton**



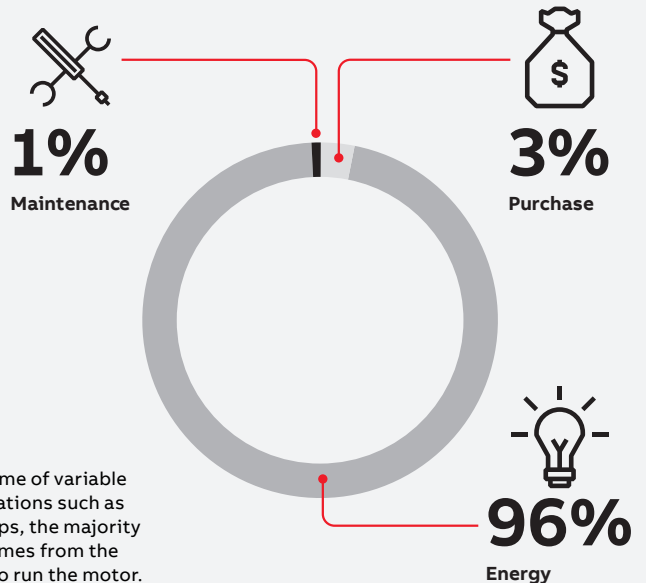
Annual Savings  
**\$276 per unit**



Estimated return on investments  
**18 to 24 months**

## Better lifetime efficiency for the whole system

Upgrading to NEMA Super Premium not only future-proofs your installation, it improves the performance of your overall system. Replacing older motor systems with more efficient ones does carry an initial financial cost, the long-term savings over the lifetime of the application far outweigh the cost of purchase. In fact, the initial investment can often be paid back in as little as one to three years.



Over the lifetime of variable torque applications such as fans and pumps, the majority of the cost comes from the energy used to run the motor.



Use the ABB energy savings calculator

# SUSTAINABILITY

ABB has set ourselves the ambitious target of helping our customers reduce their annual CO<sub>2</sub> emissions in excess of 100 megatonnes by 2030. This is equivalent to the annual emissions of 30 million combustion cars. An example of how this can be accomplished is the ability of ABB drives powering electric motors that can reduce electricity consumption by up to 25%.

## Smart sensor for energy consumption

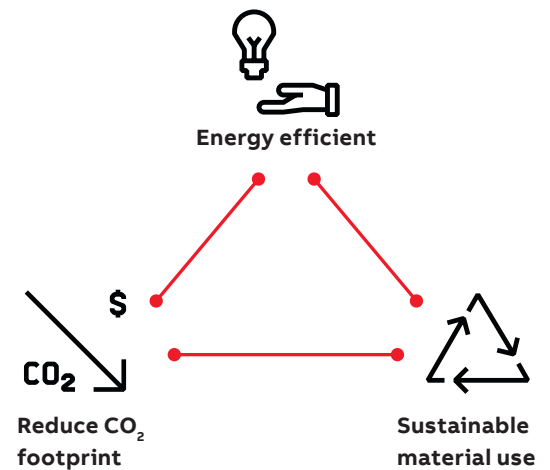
The ABB Ability™ calculates several parameters of datapoints including speed, motor power and torque. With this information, we can accurately calculate energy usage and help our customers optimize their operations.



White paper:  
Improving end-to-end  
system efficiency



Learn more about:  
Energy Efficiency  
Movement



## Time to make a difference

Join the Energy Efficiency Movement



Electric motors consume  
over 45% of the world's  
electricity.



By 2040 the number of  
motors will double.



Adoption of high-efficiency motor  
systems would cut global electricity  
consumption by up to 10%.



Changing just one  
motor can make a  
difference.

# ABB, YOUR GLOBAL VALUE PARTNER

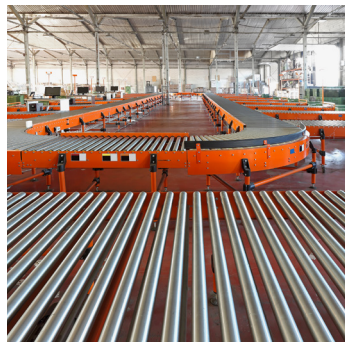
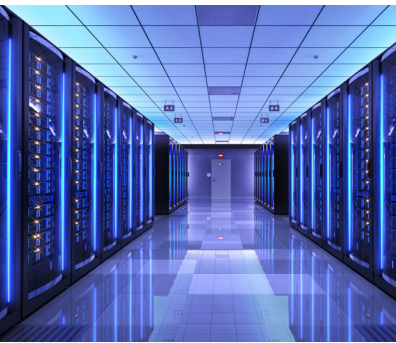
Partnering with ABB gives you access to some of the world's most innovative technology and thinking

## Global reach

ABB operates in over 100 countries with its own manufacturing, logistics and sales operations together with a wide network of local channel partners that can quickly respond to your needs. They bring our products and services straight to your front door. ABB channel partners have in-depth knowledge of local markets and are conversant with the defined ABB products and processes.

## Energy efficiency

ABB has what it takes to help every industry and application reach new levels of efficiency and energy savings even under the most demanding conditions. Combining the best available materials with superior technology, our motors are designed to operate reliably no matter how challenging the process or application, and to have low life cycle costs.







---

**ABB Motors and Mechanical Inc.**

5711 R.S. Boreham, Jr. Street  
Fort Smith, AR 72901  
Ph: 1.479.646.4711

**[new.abb.com/motors-generators](http://new.abb.com/motors-generators)**