

BALDOR[®]

GENERATORS



TWO AND FOUR WHEEL DOLLY KIT INSTALLATION INSTRUCTIONS

TWO AND FOUR WHEEL DOLLY KIT INSTALLATION INSTRUCTIONS

PRIOR TO BEGINNING INSTALLATION, READ THESE INSTRUCTIONS COMPLETELY!

See reference drawing 9210.00280 and 9210.00282 and illustrations to aid in assembly.

TOOLS REQUIRED FOR INSTALLATION:

- | | |
|---|---|
| A. Wrenches - 7/16", 1/2", 9/16"
B. Slip Joint Pliers
C. Drill and 9/16" Drill Bit | D. Sockets (Deep- well, with ratchet) - 7/16", 1/2", 9/16"
E. Blocks or other sturdy material to support Generator |
|---|---|

PROCEDURE:

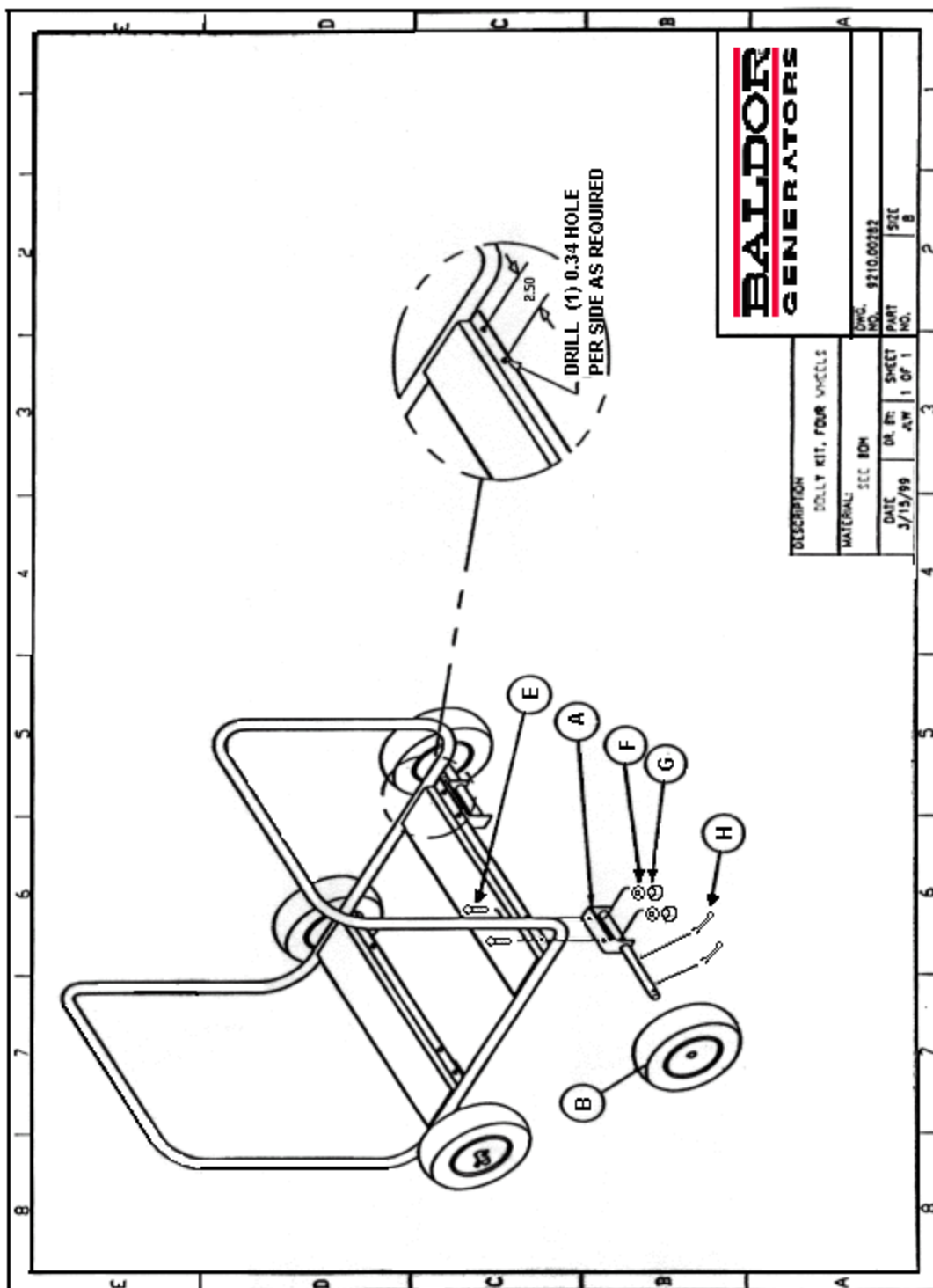
- Remove parts from shipping box and compare to parts list below. REPORT ANY SHORTAGES IMMEDIATELY.

YOUR DOLLY KIT SHOULD CONTAIN THE FOLLOWING:

PGD2 / TY2000A01 - 2 WHEEL PNEUMATIC DOLLY KIT / 4500-9000W				
	REF #	PART #	QTY	DESCRIPTION
HANDLE	B.	HB6049A00	2	BRACKET, DOLLY KIT HANDLE
	C.	HB6050A00	4	SPACER, DOLLY KIT, COLLAPSE
	D.	HB6050A01	2	HANDLE, DOLLY KIT, COLLAPSE
	V.		4	NUT NYLOK 5/16-18UNC
	Z.	HW3514A06	4	CLAMP, GUILLotine, DOLLY KIT, 1"
	AA.		8	NUT 1/4-2 OZ
	M.		4	BOLT 5/16-18 X 3 LG HEX HD CS
	S.		8	WASHER, FLAT 1/4"
DOLLY KIT REST	A.	TY2001A00	2	REST, DOLLY KIT, W/PNEUMATIC WL
	O.		4	BOLT 5/16-18 X 1" LG HEX HD CS
	Q.		2	NUT NYLOCK 3/8 - 16 UNC
	S.		8	WASHER, FLAT 1/4"
	T.		2	WASHER, FLAT, 3/8"
	U.		2	BOLT 3/8 - 16UNC X 1 1/4 LG HEX HD
	Y.	RM1088A00SP	2	ISOLATOR, #613, DOLLY KIT MOUNT
BOTH REST AND AXLE	P.		8	5/16 SPLIT LOCK WASHER
	R.		8	NUT 5/16 - 18 UNC
WHEEL AXLE	E.	HB6050A02	2	AXLE, WHEEL, DOLLY KIT, COLLAPSE
	M.		2	BOLT 5/16-18 X 3 LG HEX HD CS - for wheel Axle (E)
	N.		4	BOLT 5/16-18 X 3/4 LG HEX HD CS - for wheel Axle (E)
	W.	HW3002G24	4	COTTER PIN ZN, 1/8 X 1 1/2 STD for wheel Axle (E)
	X.	TY3000A00	2	WHEEL, PNEUMATIC
N/A		PK3338	1	CARTON, LINER

7. Remove support from under generator end and allow generator to rest on supports.
8. Support engine end of generator 8" from working surface with sturdy supports.
 - A. For four wheel dolly kit installation, support complete generator unit 8" from working surface with sturdy supports.
9. If generator frame does not have axle support holes 2.5" apart, they should be drilled at this time with an 11/32" size bit (see view B-B for reference). After drilling is finished, remove sharp edges from hole before proceeding. Drill hole on both the left and right hand side of frame.
10. Secure axle supports (E) to frame using a 1/2" box wrench and 1/2" socket, use hardware items (N,P,R). Repeat for both sides of frame.
11. Insert one cotter pin (W) into hole closest to frame, bend end of pin slightly to retain.
12. Slide tire/wheel (X) onto axle. There is no need to lubricate axle because the wheel is ball-bearing type.
13. Insert a second cotter pin (W) into hole at outer edge of axle, bend end of pin slightly to retain. Repeat for both sides.
 - A. Repeat steps 10 - 13 for each side on four- wheel dolly kit.
14. Remove support added in step 8 and allow generator to rest on tires.
15. Assemble handle support to frame with Guillotine Clamps(Z) and nuts (AA) and tighten with a 7/16" deep- well socket.

NOTE: Position handle support so top clamp is just below frame side-rail except on models OHV50 & 60 where bottom U bolt (Guillotine Clamp) is just on top of frame side-rail.
16. Position one of the long bolts (M) through the handle bracket top hole using a washer (S) at both the head and nut end. Secure with a locking nut (V). **DO NOT OVER TIGHTEN.**
17. Position the second long bolt through the bottom hole with flat washers (S) on each end and with the spacers (C) and handle (D) centered in the middle of the bracket. DO NOT over tighten as the handle should be free to drop down when not in use. Use a locking nut (V) to secure.
18. Repeat steps 15-18 for each side.



BALDOR
GENERATORS

DESCRIPTION		DOLLY KIT, FOUR WHEELS	
MATERIAL		SEC 80W	
DATE	DR. BY	SHEET	NO.
3/15/99	AW	1 OF 1	
DWG. NO.		9210.00182	
PART NO.		B	
SIZE		B	

PGD4

FOUR WHEEL DOLLY KIT